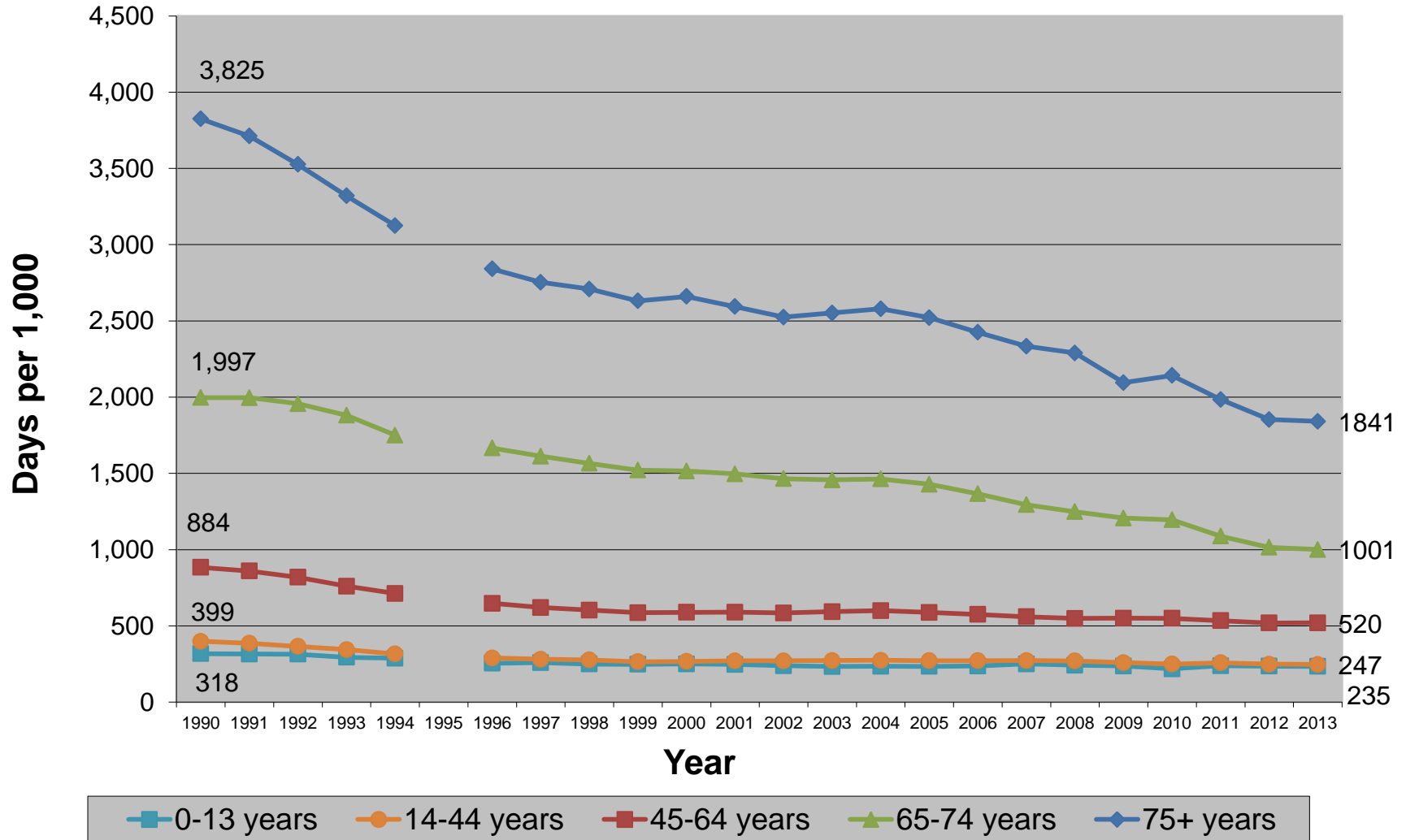
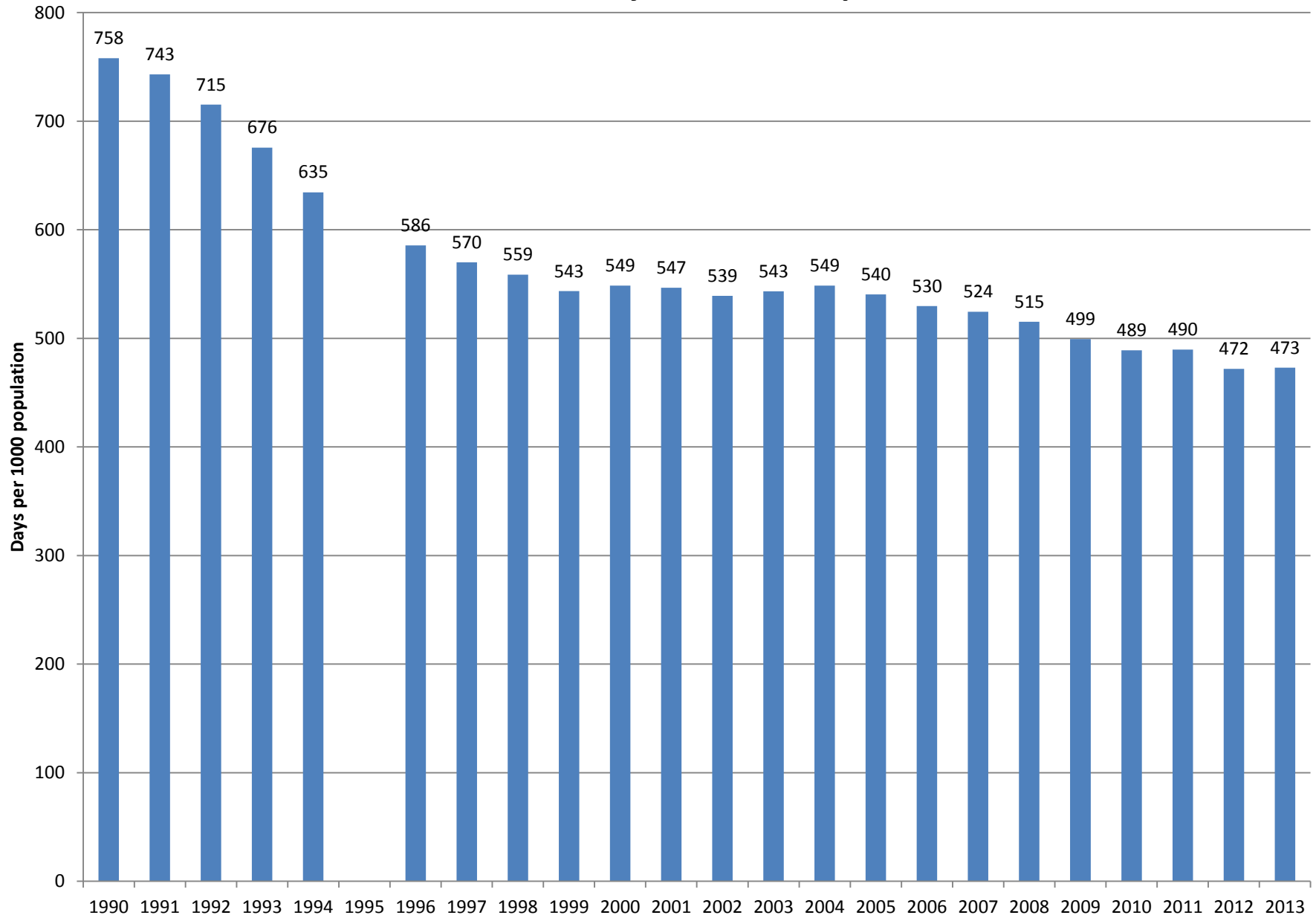


NC Acute Care Hospital Days per 1,000 Population October 1, 1989 to September 30, 2013



Source: Data from Truven Health Analytics and NC Medical Database Commission. Population data from NC Office of State Planning. Psych, Rehab, LTC and SA facility discharges deleted. Normal newborns (DRG 795) also deleted. NC residents only.

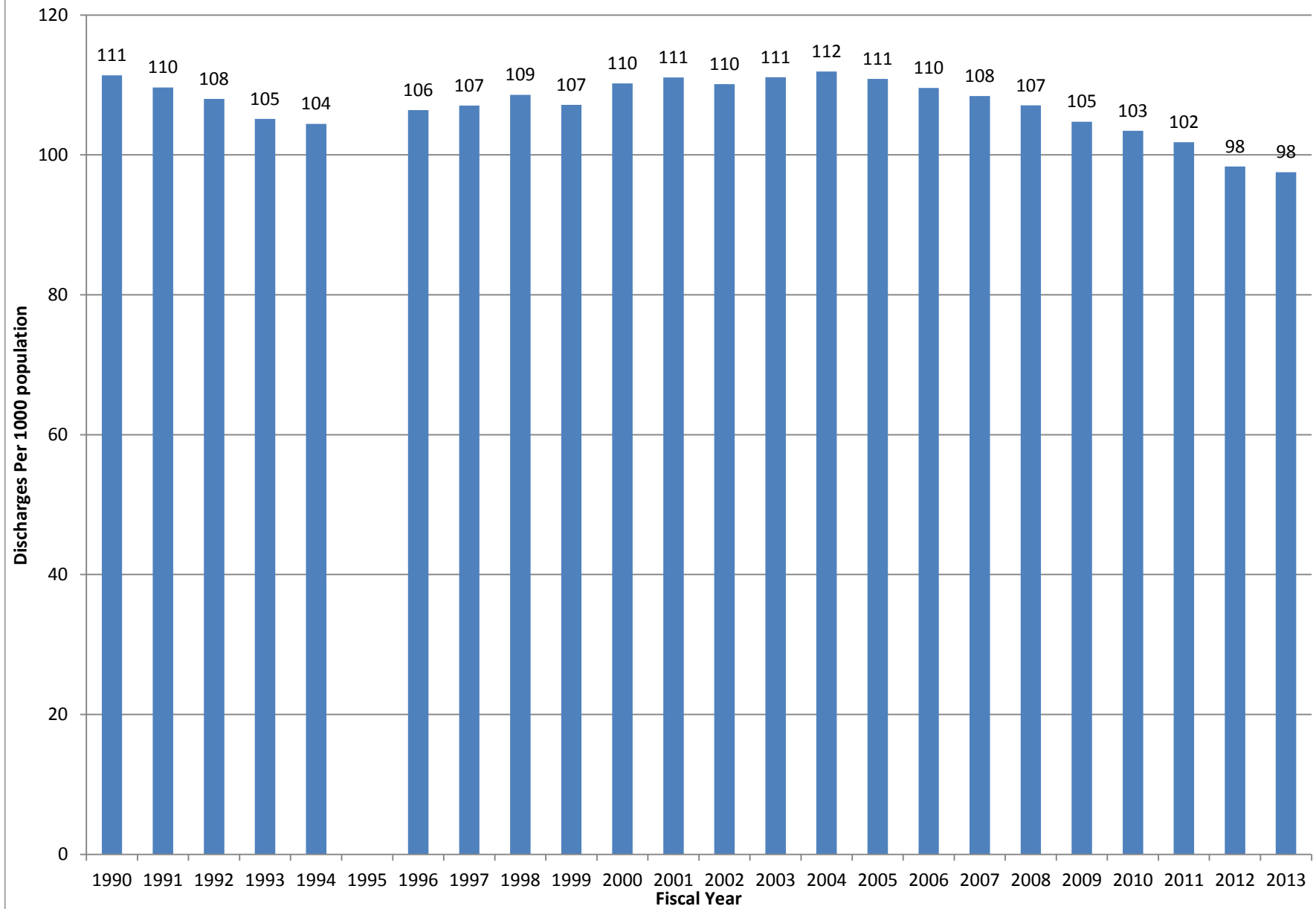
North Carolina Acute Care Days Per 1000 Population, 1990-2013



NC Residents - Acute Hospitals - No Normal Newborns

Source: Data from Truven Health Analytics and Medical Database Commission. Produced by Cecil G. Sheps Center at UNC Chapel Hill

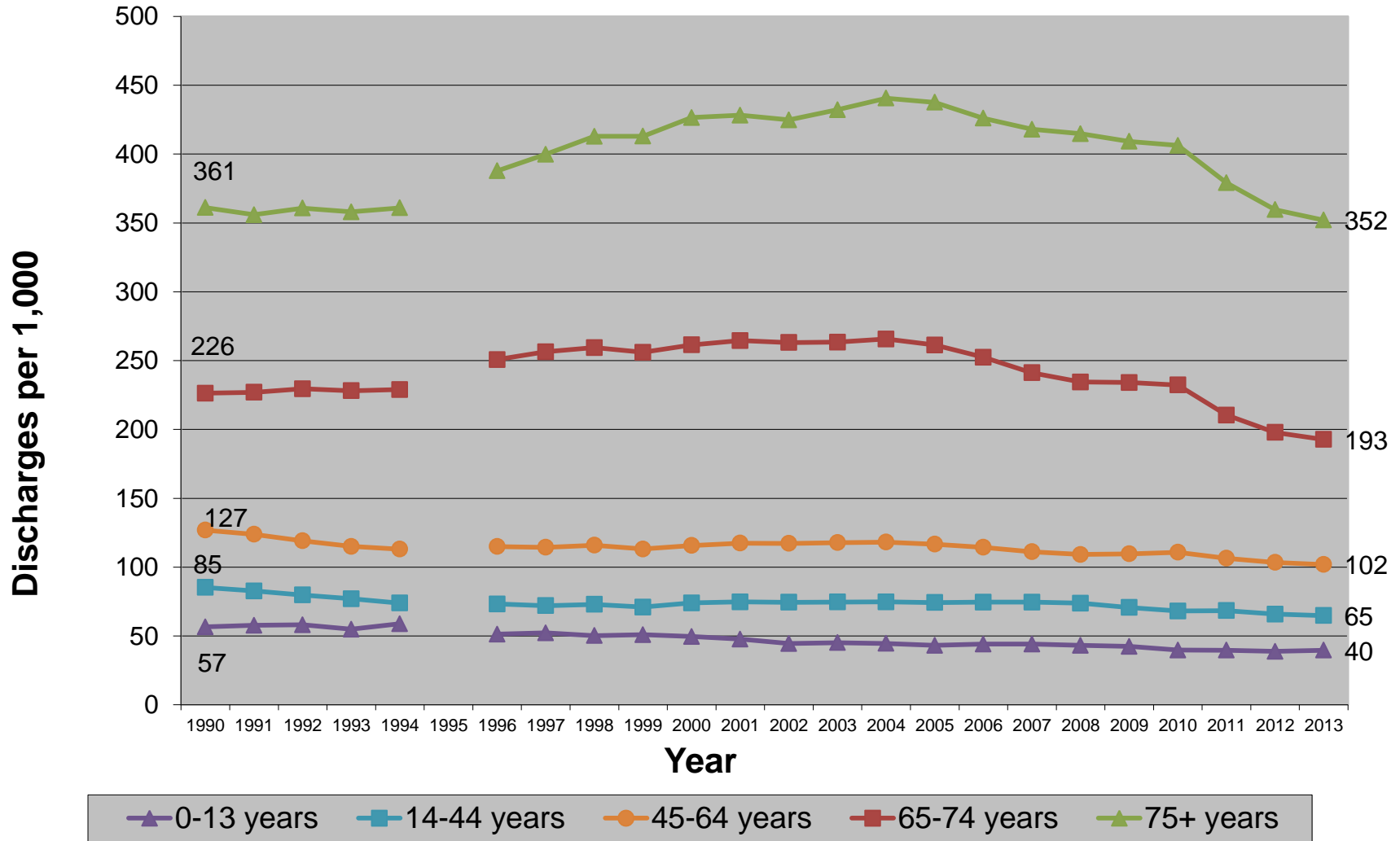
North Carolina Acute Care Discharges Per 1000 population, 1990-2013



NC Residents - Acute Hospitals - No Normal Newborns

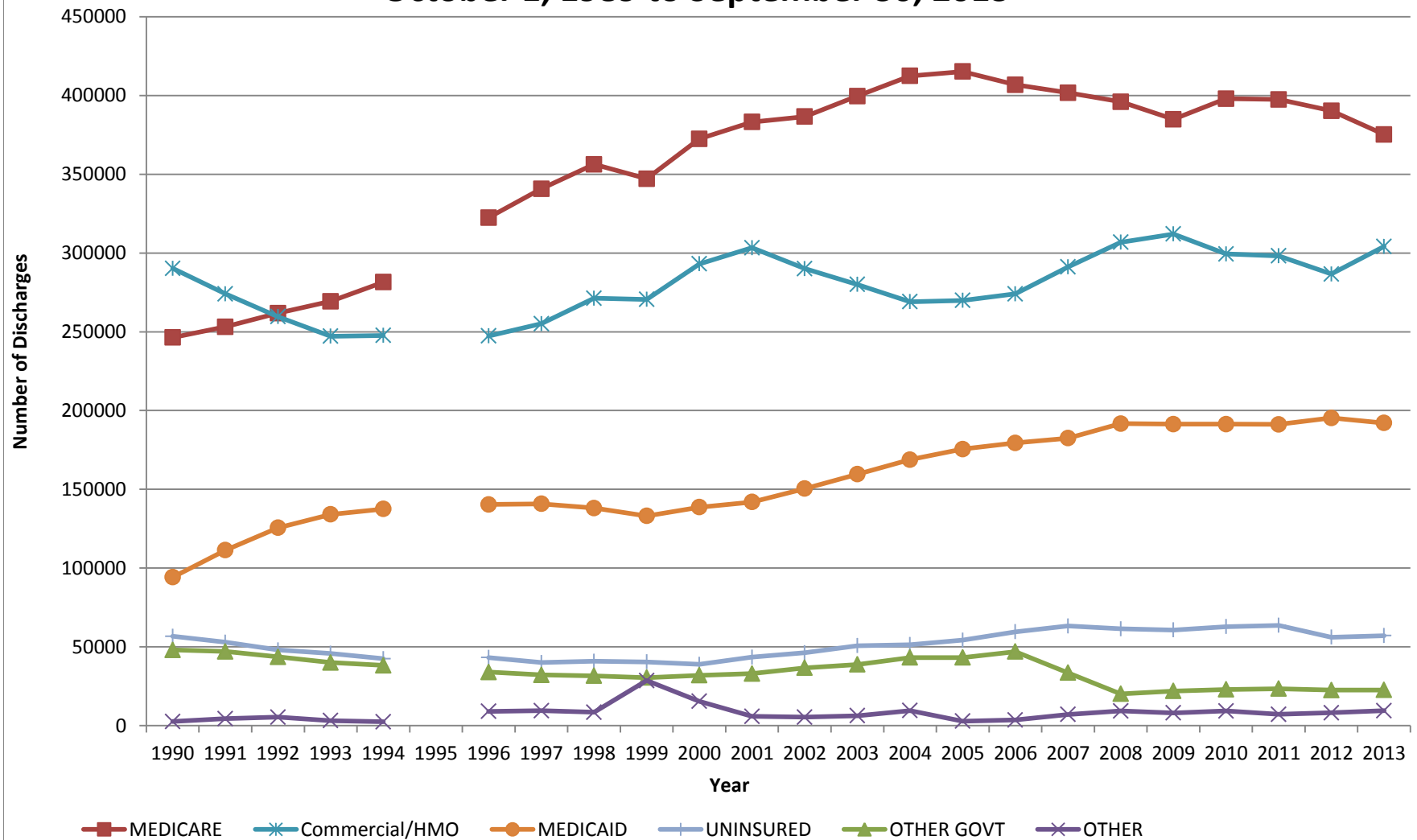
Source: Data from Truven Health Analytics and Medical Database Commission.

NC Acute Care Hospital Discharges per 1,000 Population October 1, 1989 to September 30, 2013



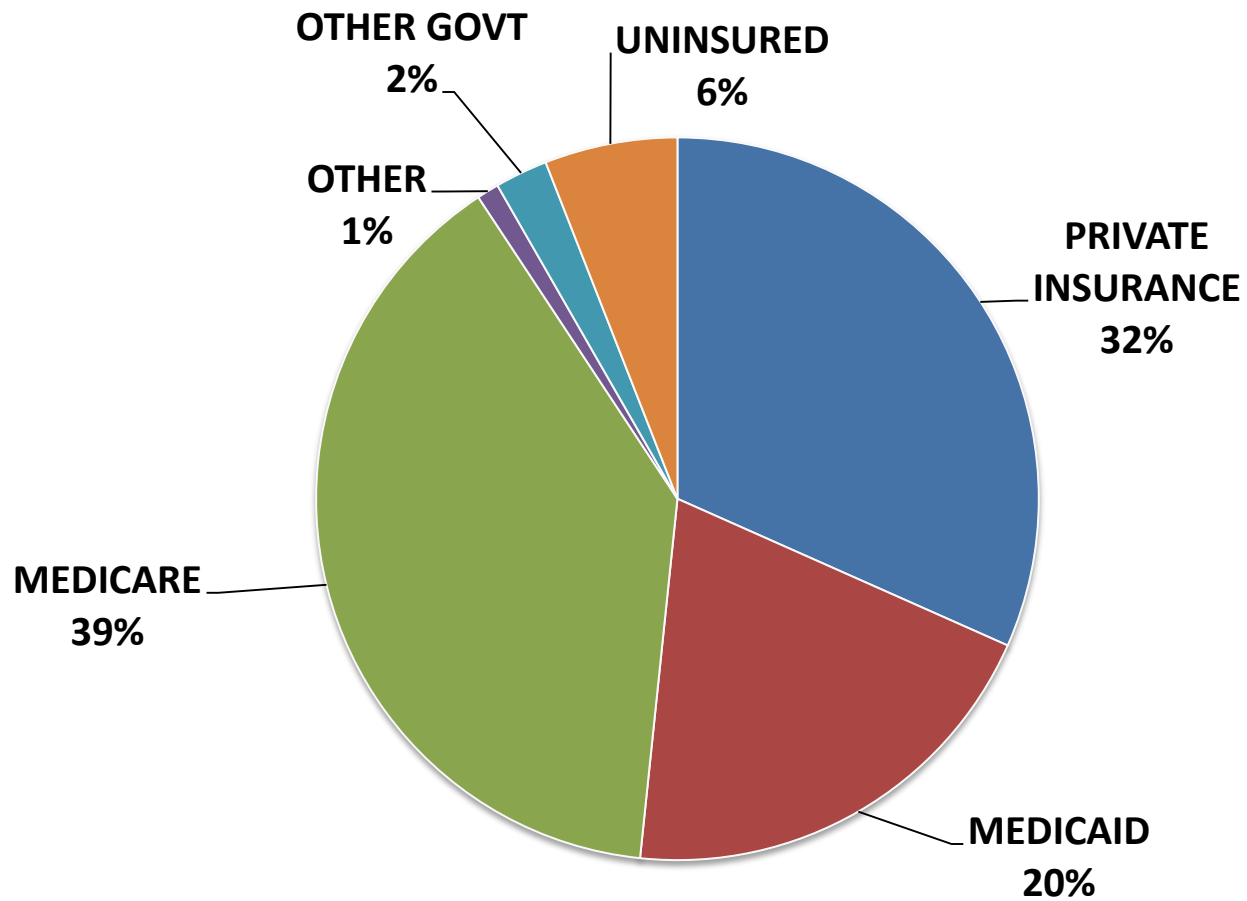
Source: Data from Truven Health Analytics and NC Medical Database Commission. Population data from NC Office of State Planning. Psych, Rehab, LTC and SA facility discharges deleted. Normal newborns (DRG 795) also deleted. NC residents only.

NC Data Payer Distribution October 1, 1989 to September 30, 2013



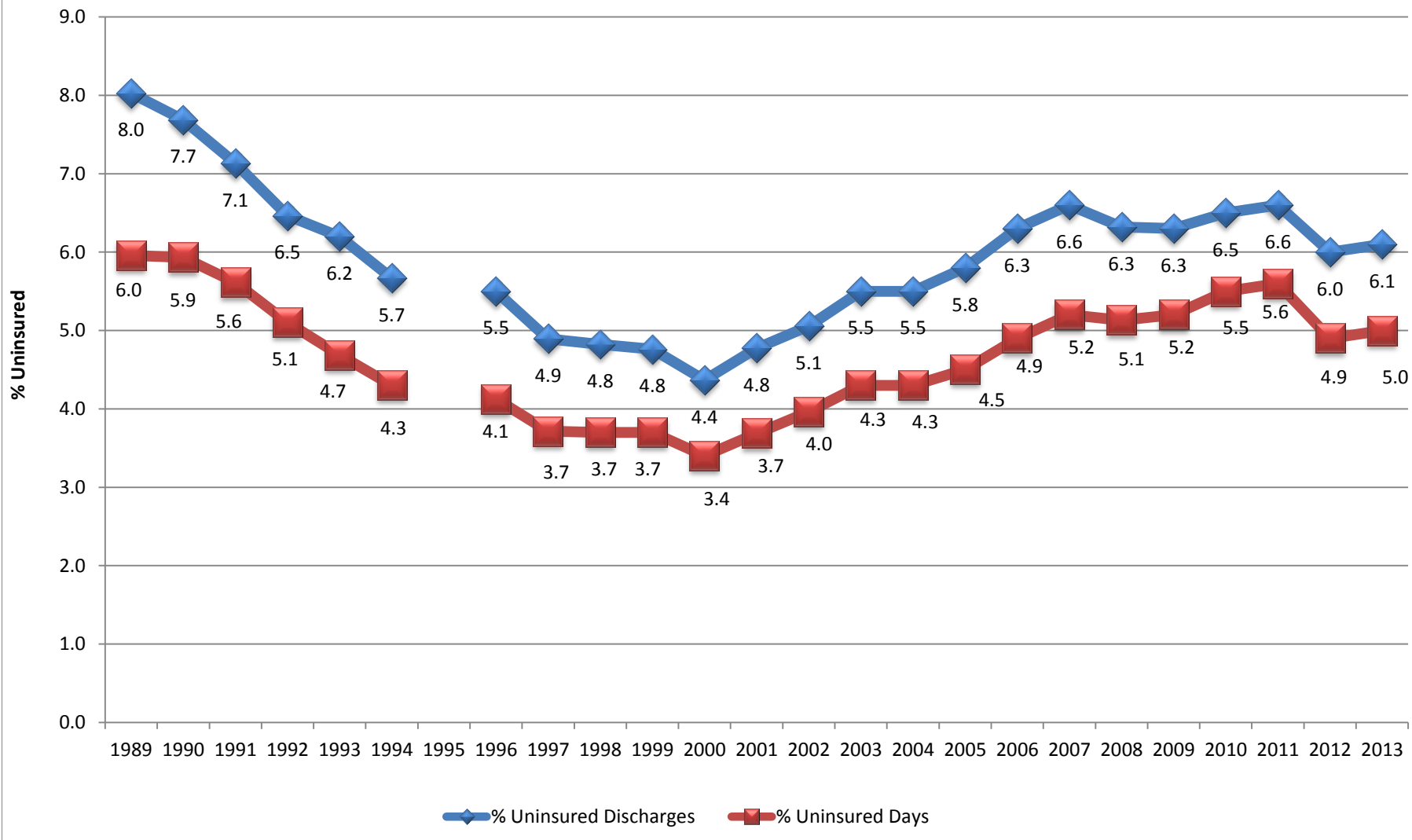
Source: NC Hospital Inpatient Discharge Data from Truven Health Analytics and NC Medical Database Commission. No Newborns, NC Residents only, missing data excluded. Produced by Cecil G. Sheps Center for Health Services Research at UNC, Chapel Hill

NC Acute Care Discharge by Payer October 1, 2012 to September 30, 2013



Source: Truven Health Analytics, NC Hospital Discharge Data, Fiscal Year 2013. No Newborns, NC Residents only, Missing data excluded.
Produced By: Cecil G. Sheps Center for Health Services Research, UNC at Chapel Hill.

NC Uninsured Discharges and Days as Percent of Total October 1, 1988 to September 30, 2013



Source: North Carolina Hospital Inpatient Discharge Data from Truven Health Analytics and the NC Medical Database Commission. All Acute Care Discharges, excluding Normal Newborns. Produced by Cecil G. Sheps Center at UNC Chapel Hill