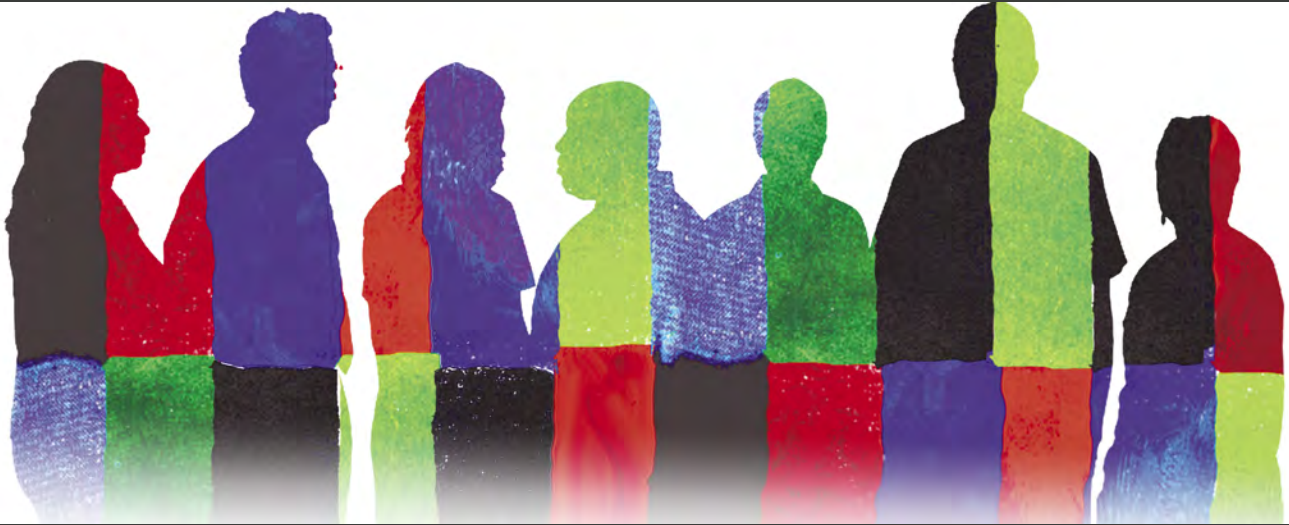


Research Ethics Grand Rounds

March 20, 2014



Project Grace: Navigating Ethical Issues in Community Based Youth HIV Prevention Research

Giselle Corbie-Smith, MD, MSc
Kenan Distinguished Professor,
Department of Social Medicine and
Medicine
Director, TraCS CARES
Director, Center for Health Equity
Research

Rev. Mark R. Royster, Sr., MDiv, DMin
Member of the Non-Biomedical Internal
Review Board
Member of UNC Hospital Ethics
Committee

Doris Stith
Executive Director,
Community Enrichment
Organization Inc.

Mysha Wynn, MEd
Executive Director,
Project Momentum Inc.

Connie Blumenthal, MPH
Program Manager
Center for Health Equity
Research and Sheps Center
for Health Services Research

Tiarney Ritchwood, PhD
Post-Doctoral Fellow
Center for Health Equity
Research

Noon–1:30 p.m.
219 Brinkhous-Bullitt
TraCS Conference Rm



UNC
CENTER FOR
BIOETHICS



UNC
THE NORTH CAROLINA
TRANSLATIONAL & CLINICAL
SCIENCES INSTITUTE



UNC
OFFICE OF HUMAN
RESEARCH ETHICS