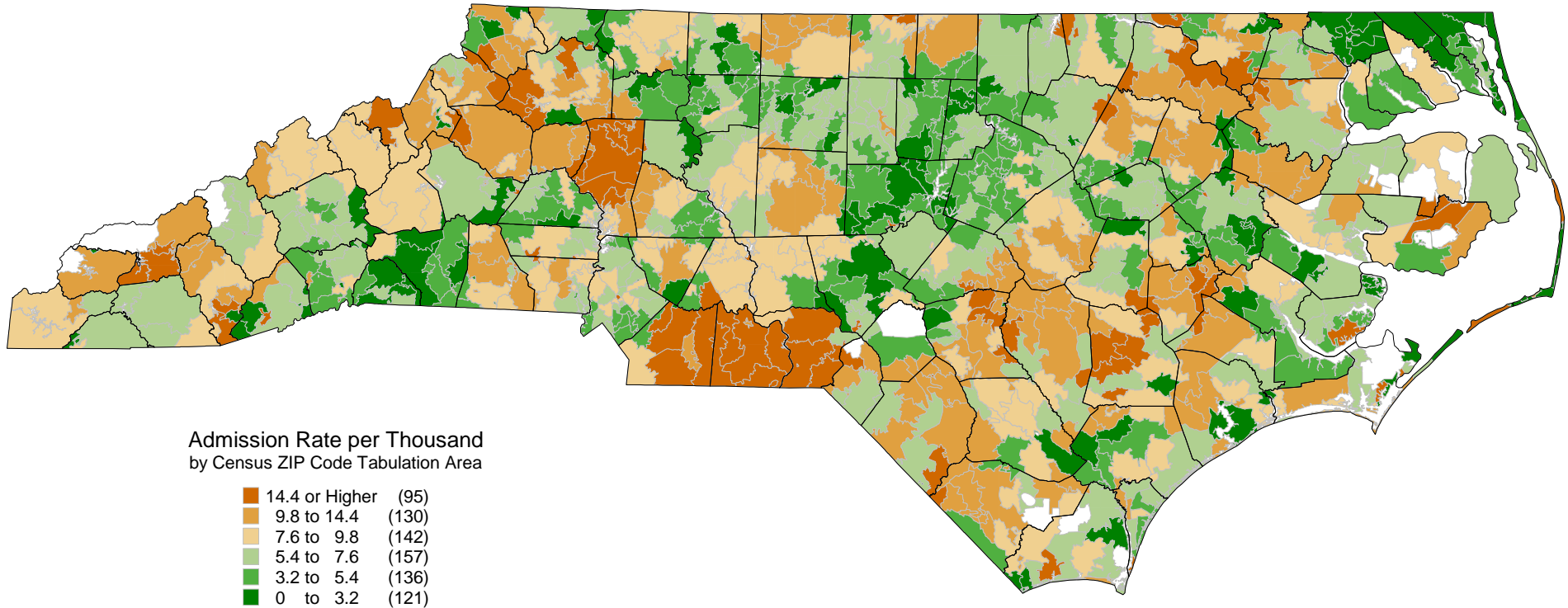


Ambulatory Care Sensitive Condition Hospital Admissions (2004)

by ZIP Code Tabulation Areas for Persons Under 18 Years



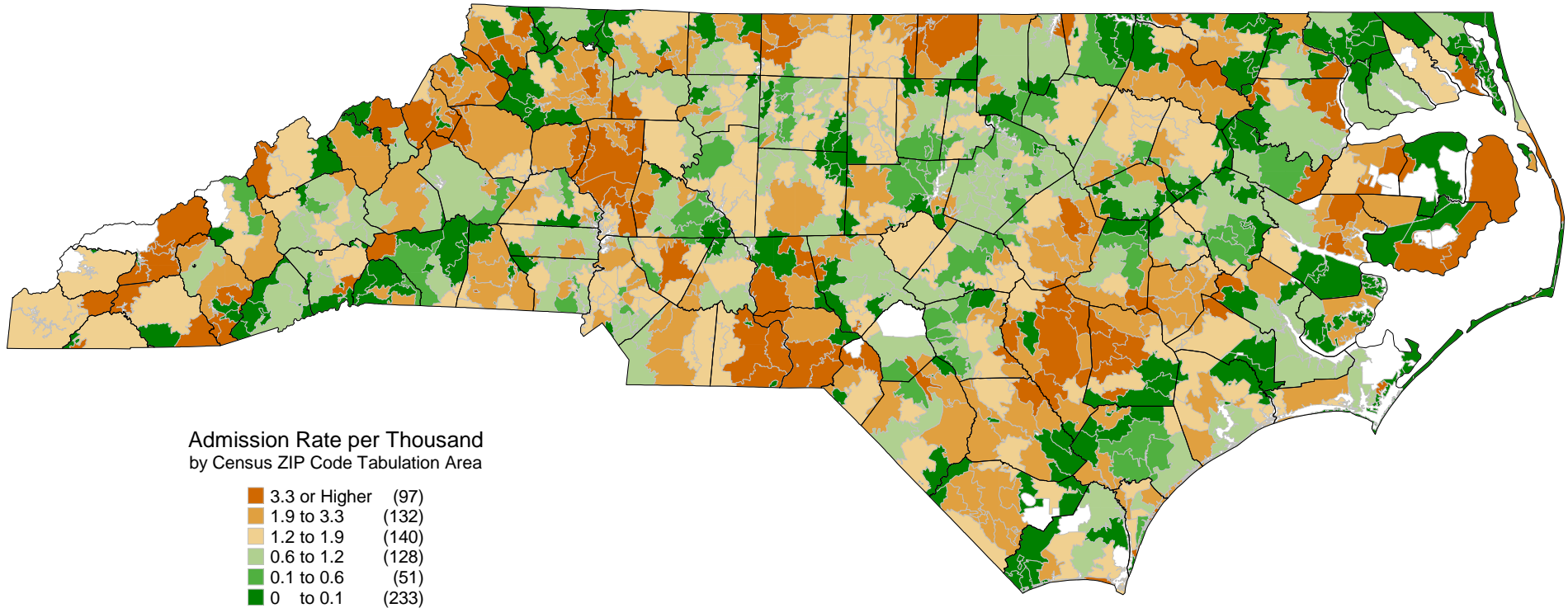
Note: Only admissions to North Carolina Hospitals are included.

Sources: HCIA Inpatient Discharge Database, October 1, 2003 to September 30, 2004; US Census Bureau, 2000.

Produced by: North Carolina Rural Health Research and Policy Analysis Center, Cecil G. Sheps Center for Health Services Research, University of North Carolina at Chapel Hill.

Ambulatory Care Sensitive Condition Hospital Admissions (2004) for Pneumonia

by ZIP Code Tabulation Areas for Persons Under 18 Years



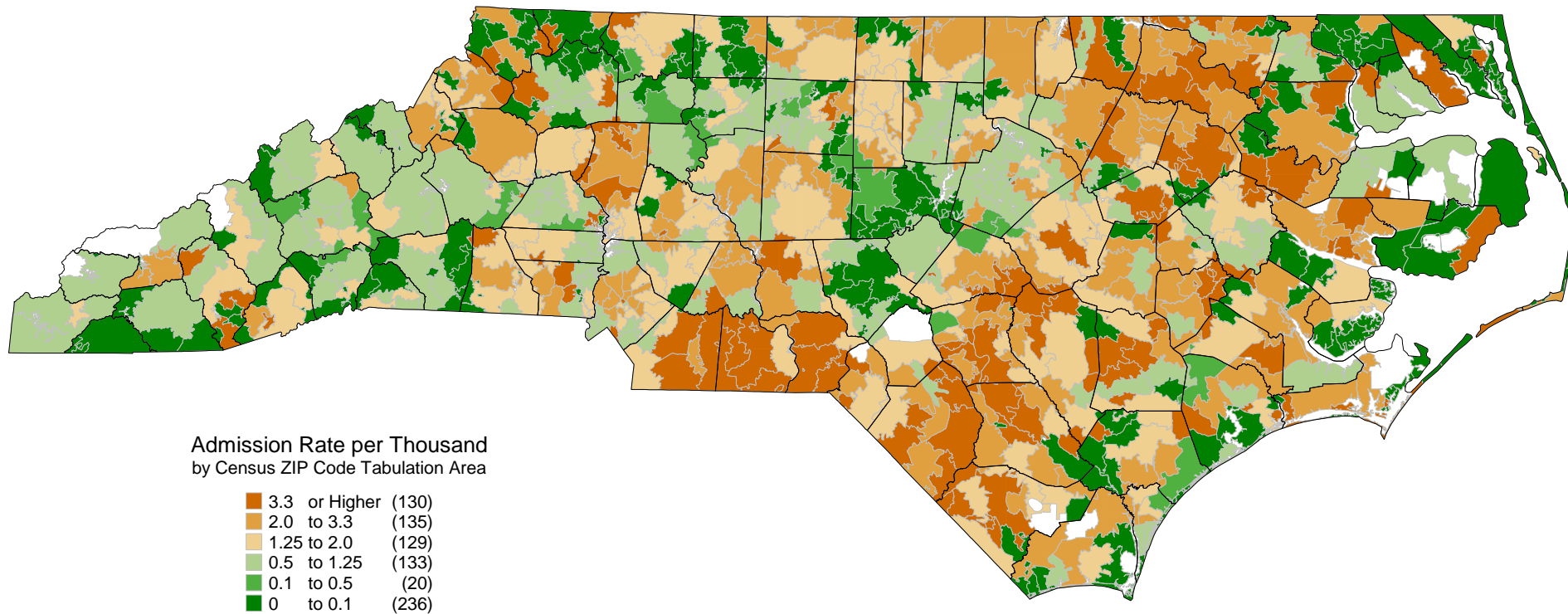
Note: Only admissions to North Carolina Hospitals are included.

Sources: HCIA Inpatient Discharge Database, October 1, 2003 to September 30, 2004; US Census Bureau, 2000.

Produced by: North Carolina Rural Health Research and Policy Analysis Center, Cecil G. Sheps Center for Health Services Research, University of North Carolina at Chapel Hill.

Ambulatory Care Sensitive Condition Hospital Admissions (2004) for Asthma

by ZIP Code Tabulation Areas for Persons Under 18 Years



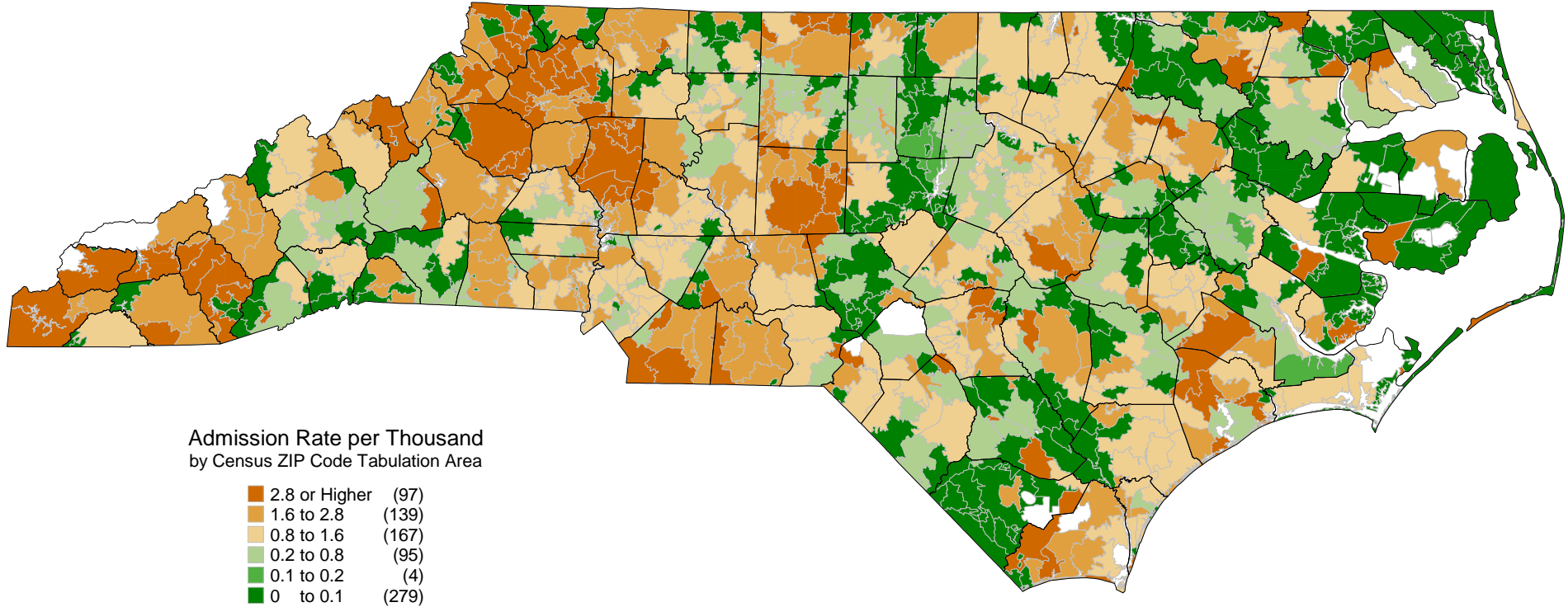
Note: Only admissions to North Carolina Hospitals are included.

Sources: HCIA Inpatient Discharge Database, October 1, 2003 to September 30, 2004; US Census Bureau, 2000.

Produced by: North Carolina Rural Health Research and Policy Analysis Center, Cecil G. Sheps Center for Health Services Research, University of North Carolina at Chapel Hill.

Ambulatory Care Sensitive Condition Hospital Admissions (2004) for Dehydration

by ZIP Code Tabulation Areas for Persons Under 18 Years



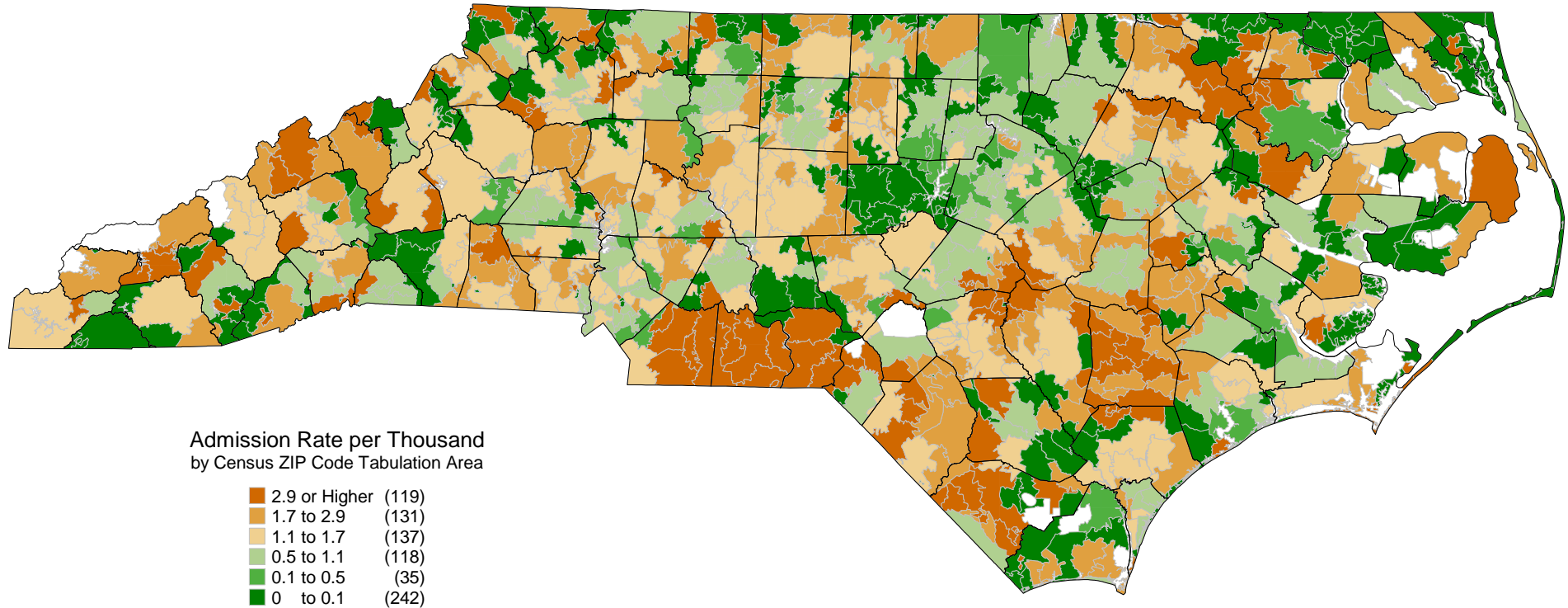
Note: Only admissions to North Carolina Hospitals are included.

Sources: HCIA Inpatient Discharge Database, October 1, 2003 to September 30, 2004; US Census Bureau, 2000.

Produced by: North Carolina Rural Health Research and Policy Analysis Center, Cecil G. Sheps Center for Health Services Research, University of North Carolina at Chapel Hill.

Ambulatory Care Sensitive Condition Hospital Admissions (2004) for Kidney Infection, Severe ENT Infection, or Gastroenteritis

by ZIP Code Tabulation Areas for Persons Under 18 Years



Note: Only admissions to North Carolina Hospitals are included.

Sources: HCIA Inpatient Discharge Database, October 1, 2003 to September 30, 2004; US Census Bureau, 2000.

Produced by: North Carolina Rural Health Research and Policy Analysis Center, Cecil G. Sheps Center for Health Services Research, University of North Carolina at Chapel Hill.