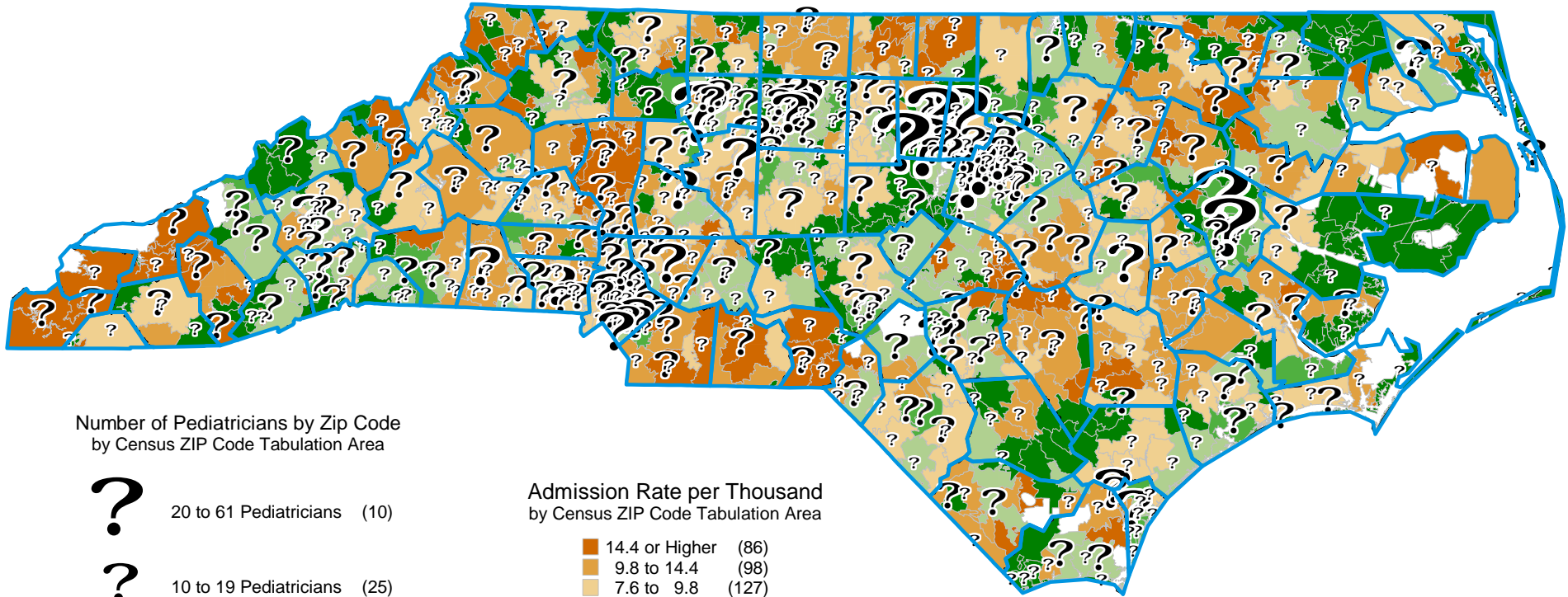


Pediatricians and Ambulatory Care Sensitive Condition Hospital Admissions (2005)

by ZIP Code Tabulation Areas for Persons Under 18 Years



Number of Pediatricians by Zip Code
by Census ZIP Code Tabulation Area

?	20 to 61 Pediatricians	(10)
?	10 to 19 Pediatricians	(25)
?	2 to 9 Pediatricians	(186)
?	1 Pediatrician	(377)

Admission Rate per Thousand
by Census ZIP Code Tabulation Area

	14.4 or Higher	(86)
	9.8 to 14.4	(98)
	7.6 to 9.8	(127)
	5.4 to 7.6	(182)
	3.2 to 5.4	(143)
	0 to 3.2	(146)

Note: Only admissions to North Carolina Hospitals are included. There were 1,427 active, in-state, non-federal, non-resident-in-training pediatricians licensed as of 10/31/05; zip codes are missing for 199 pediatricians.

Sources: HCIA Inpatient Discharge Database, October 1, 2004 to September 30, 2005; US Census Bureau, 2000; NC Health Professions Data System, with data derived from the NC Medical Board, 2005.

Produced by: North Carolina Rural Health Research and Policy Analysis Center, Cecil G. Sheps Center for Health Services Research, University of North Carolina at Chapel Hill.