

# **Interprofessional Education/Interprofessional Practice...and all that:**

## **What are the questions?**

Warren P. Newton, MD, MPH

January 28, 2015

North Carolina  
AHEC

*creating a better state of health*

# Introductions

# My Experience

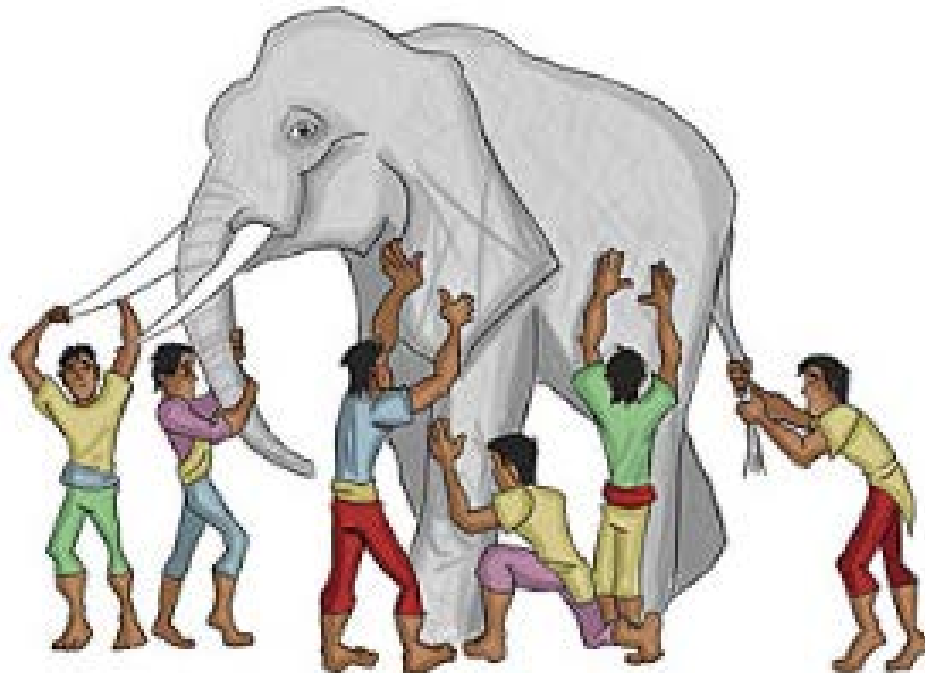
- QI—IPIP/Practice Support, I<sup>3</sup> Chronic Care and improvement teams...
- AHEC—nursing clinical site development, CIPE pilots, community health workers, patient engagement
- UNC SOM/ABFM—professionalism curriculum
- National
  - IOM Global Forum—exemplar curricula
  - LCME IPE/IPP curricula requirement
  - ABMS—measuring impact of MDs/systems

# Objectives

- What's the right name?
- How should we educate?
- How should we assess impact of teams on clinical outcomes?

# Caveats

- Not an expert
- We each have our own perspective



# The Case for IPE/PP

- Neurobiology
- The reality of US health care
- Not the first time we've discovered it

# What is in a name?

- Interprofessional Education
  - “occurs when two or more professions (students, residents and health workers) learn **with**, **about**, and **from** each other to enable effective collaboration and improve health outcomes.”

# What is in a name?

- Interprofessional Practice
  - “occurs when multiple health workers from different professional backgrounds provide comprehensive health services by working with patients, their families, carers (caregivers), and communities to deliver the highest quality of care across settings.”



# What is in a name?

- Team based care
  - An approach to health care whereby a group of people work together to accomplish a common goal, solve a problem or achieve a specified result.

# Complications

- Community health workers, patient and family engagement
- When in the career?
- Psychological origins of the IPE movement:

Intensive care units

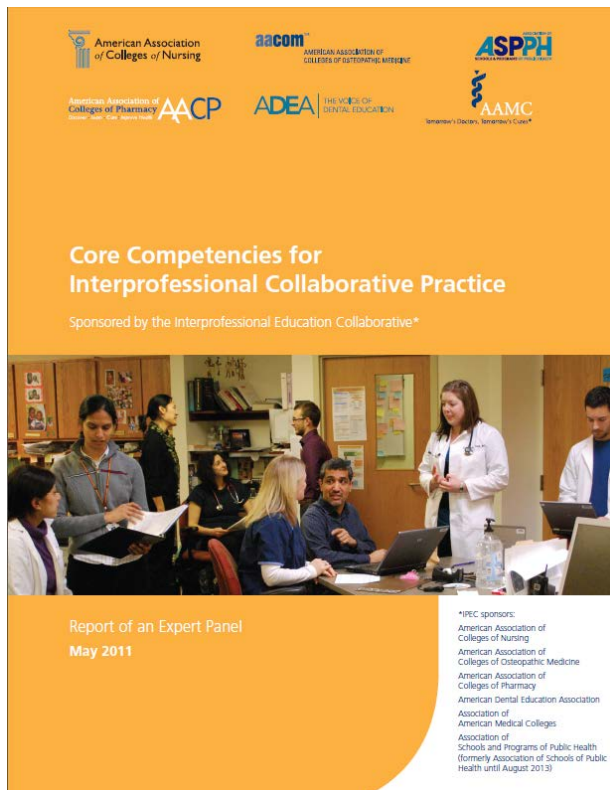
vs.

Outpatient primary care

# What's in a name?

# How should we educate for team based care?

# IPEC Competencies



- Values/Ethics for Interprofessional Practice
- Roles/Responsibilities
- Interprofessional Communication
- Teams & Teamwork

# Pedagogic Strategies

- Professionalism/interprofessionalism
  - Didactic sessions, journaling, reflection
- Simulations—Team Stepps and beyond...
- OSCEs, both as “on ramp” and as evaluation strategy

# Curricula

- Meet the team course work
- Common Curriculum, with case based discussion
  - Professionalism, Ethics
  - QI
- Free clinics, like SHAC
- ? Clinical setting--? Signposting vs true team based care

# Institutional Strategy

- Macy Foundation Centers
- Institutional leadership
  - Architecture
  - Vice-Chancellor/Provost investment
  - Joint Hires



# Accreditation/Certification as a Strategy

- LCME (and others)
- ABMS vs JCAHO
  - MD vs. system influences
  - AB Peds
- Accreditors as Innovators?

# Complications

- Patients, Community health workers
- Which professions, when in their training?
- How do we get to active learning?
- What do the learners think?
- How do institutions sustain the work?
- Are competencies the right framework?

What should the priority be  
for education in team  
based care?

# Assessing the Contributions of Team Based Care to Clinical Outcomes

# What are the questions?

- Population
  - Demographics
  - Diseases
  - Comorbidity
- Outcomes
  - Morbidity/mortality
  - Functional Status
  - Quality of life
  - Cost
  - Etc...



Confounding/Effect  
Modifying Variables;  
Structure/ Process  
Organizational Factors  
+ Team Attributes

# Key Questions

- Measuring team-ness
  - Where, when, for what purpose?
- Other social/organizational variables
  - Leadership
  - Hierarchy
  - Communication
- Other confounding variables

# Team Specifications

- Which disease or symptom complex?
- Who is on the team? When in the course of the disease? Where in the continuum of care?
- Are patients and family on the team?
- How does the team function?  
Meetings? Virtually?

# Examples

- Surgical 'focused factories'
- Direct pay primary care
- Oncology care
- "Working at the top of the license"
  - MD/APP collaboration in oncology/primary care
  - Scribes
  - Nursing Teams/Assistants in hospital; Medical Assistants, and others...



# Complications

- Is teamwork a trait or a phase?
- Does specification reduce generalizability?
- How much teamwork is cost effective: HRSA use case vs new cancer patient?
- What is the interplay between culture and systems of care...and team based care?

What are research priorities for assessing the impact of team based care on clinical outcomes?

# Comments?