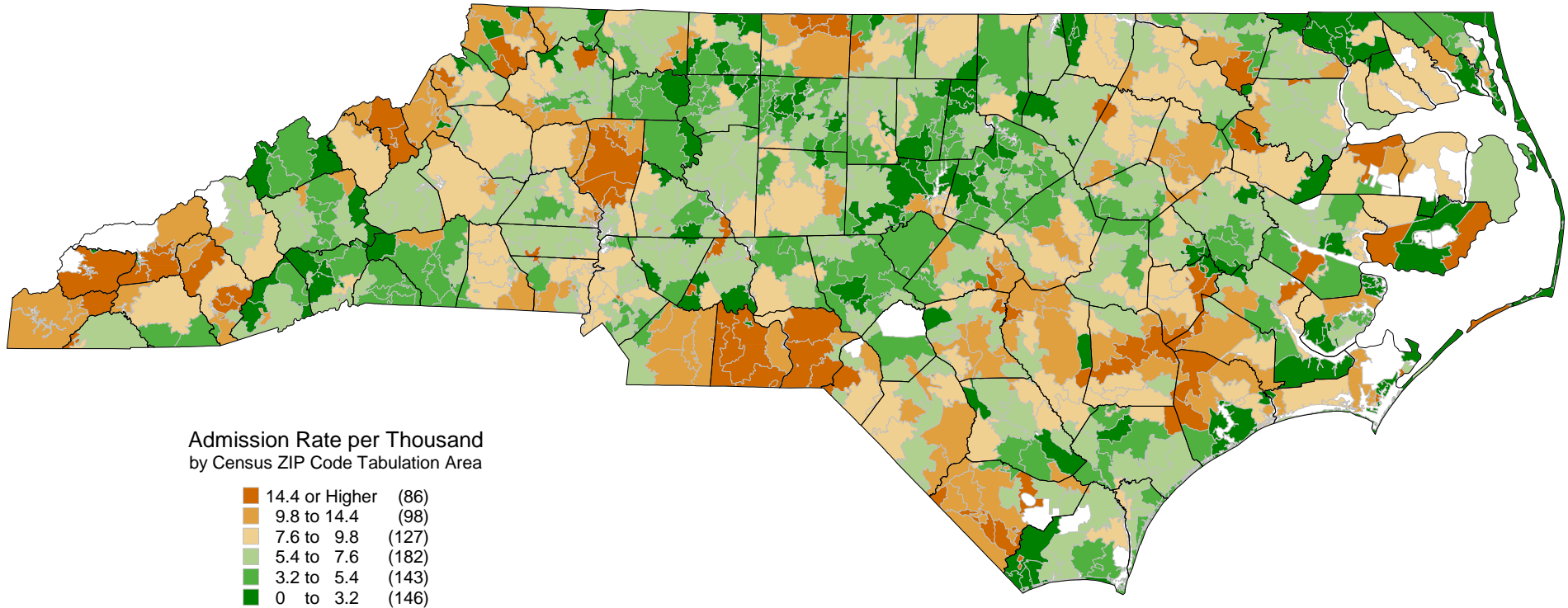


Ambulatory Care Sensitive Condition Hospital Admissions (2005)

by ZIP Code Tabulation Areas for Persons Under 18 Years



Note: Only admissions to North Carolina Hospitals are included.

Sources: HCIA Inpatient Discharge Database, October 1, 2004 to September 30, 2005; US Census Bureau, 2000.

Produced by: North Carolina Rural Health Research and Policy Analysis Center, Cecil G. Sheps Center for Health Services Research, University of North Carolina at Chapel Hill.