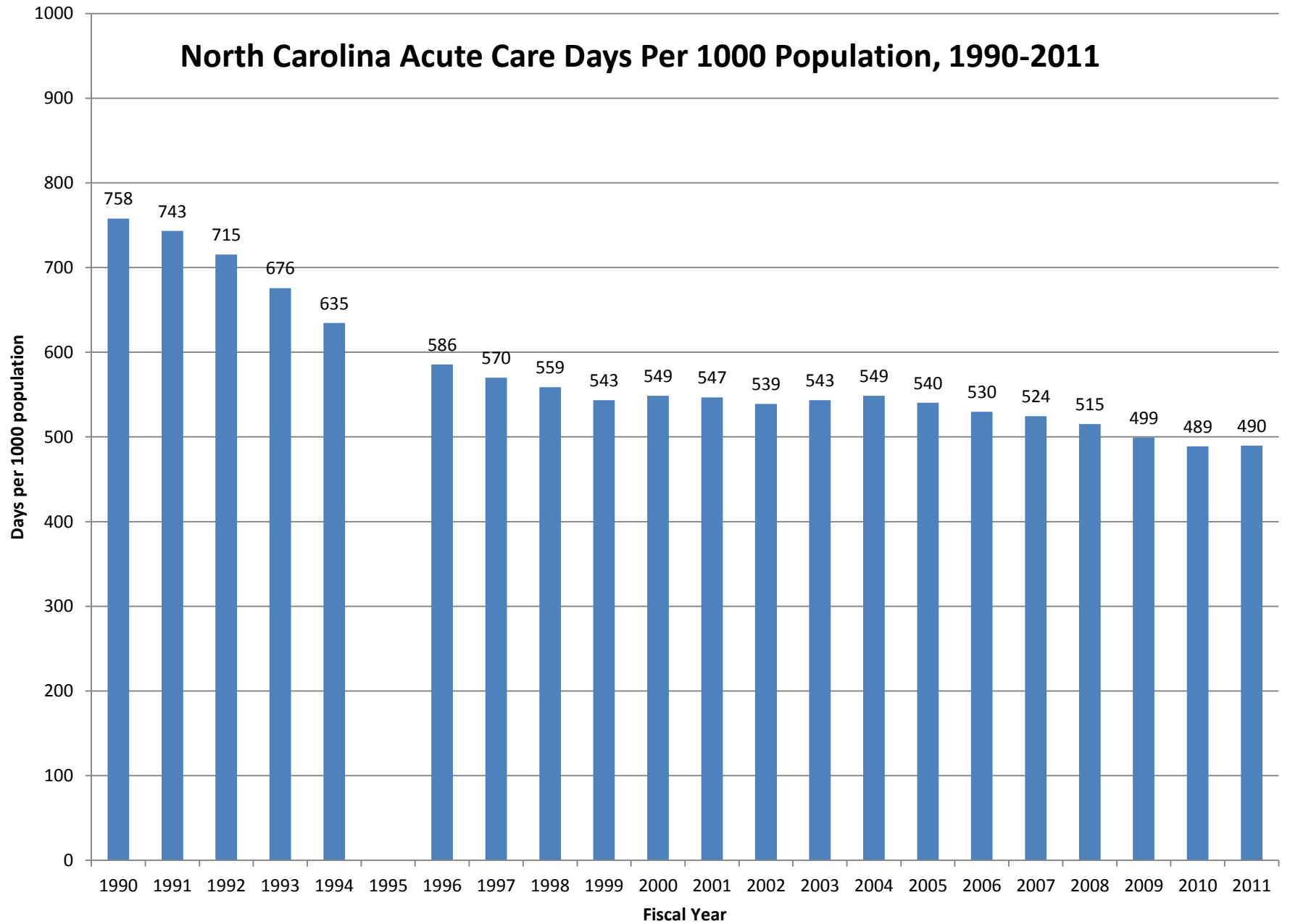


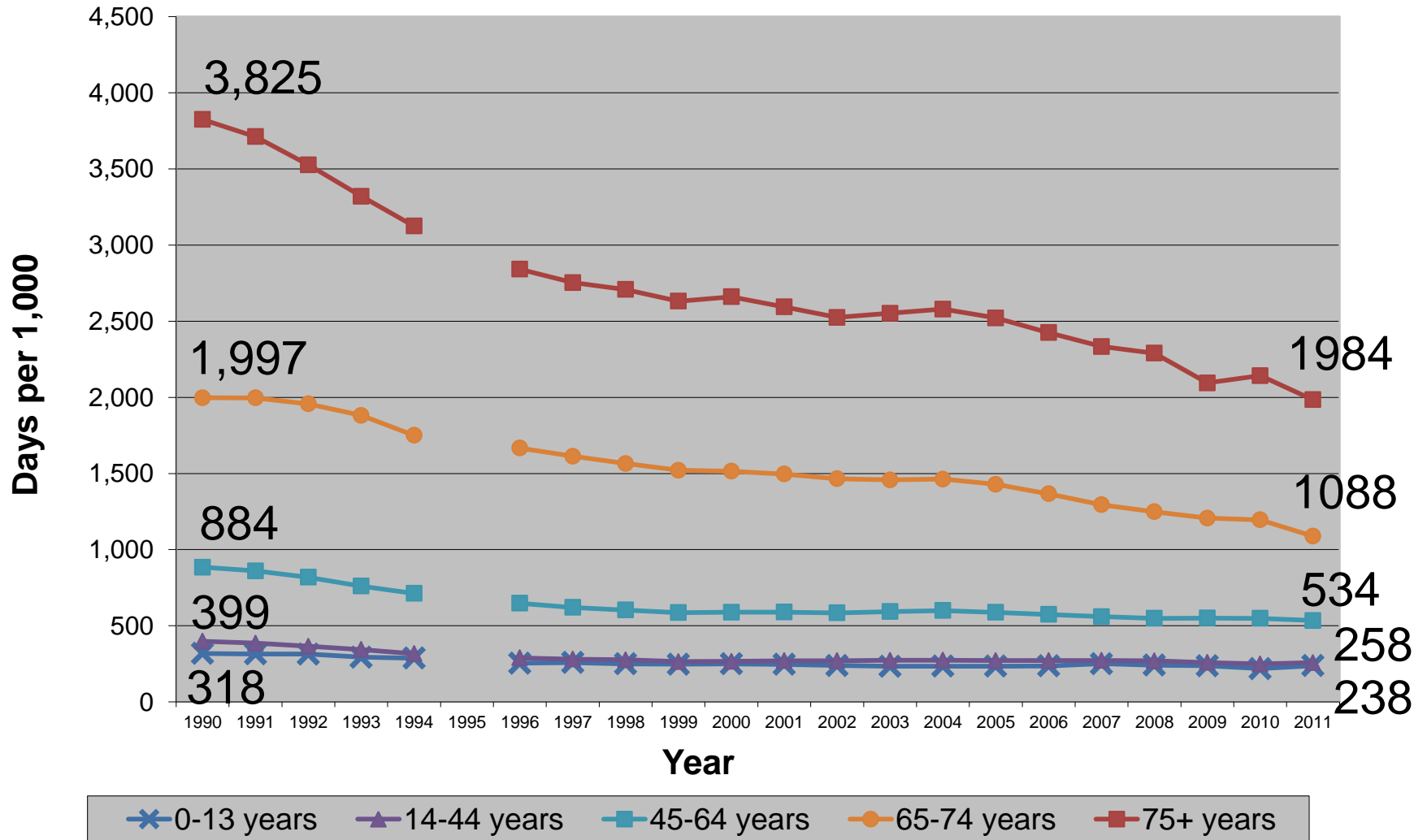
North Carolina Acute Care Days Per 1000 Population, 1990-2011



NC Residents - Acute Hospitals - No Normal Newborns

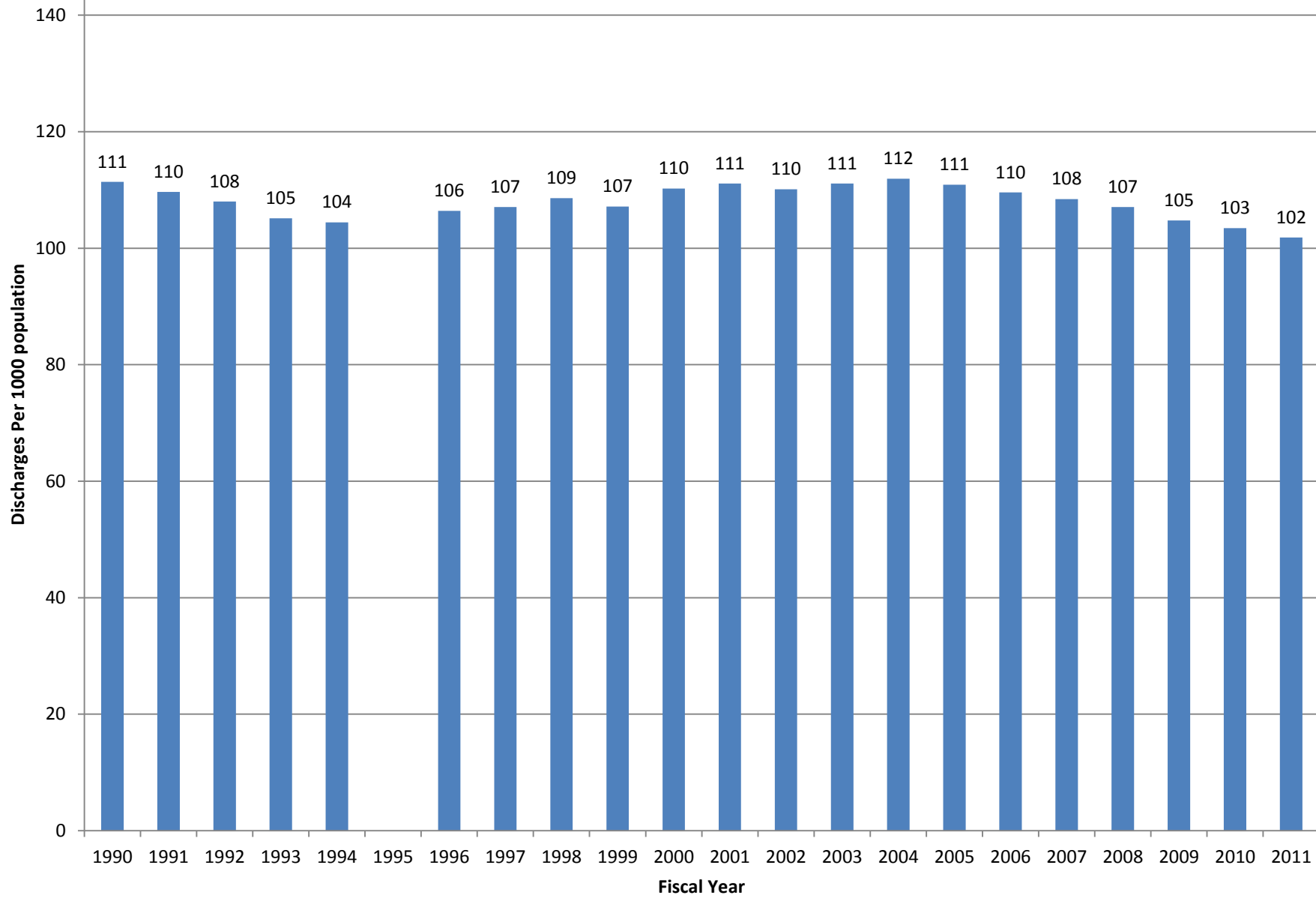
Source: Data from Truven Health Analytics and Medical Database Commission. Produced by Cecil G. Sheps Center at UNC Chapel Hill

NC Acute Care Hospital Days per 1,000 Population October 1, 1989 to September 30, 2011



Source: Data from Truven Health Analytics and NC Medical Database Commission. Population data from NC Office of State Planning. Psych, Rehab, LTC and SA facility discharges deleted. Normal newborns (DRG 795) also deleted. NC residents only.

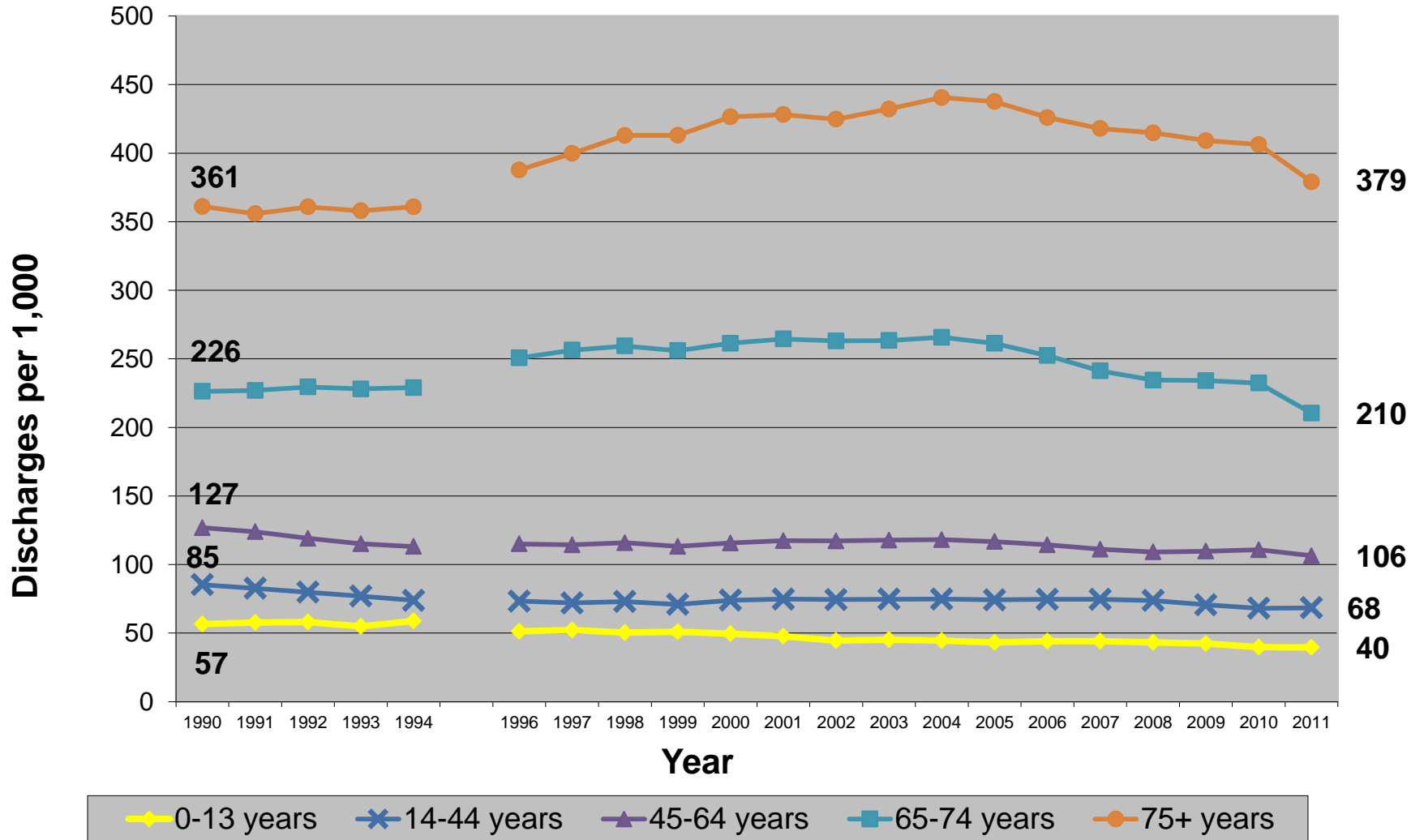
North Carolina Acute Care Discharges Per 1000 population, 1990-2011



NC Residents - Acute Hospitals - No Normal Newborns

Source: Truven Health Analytics and Medical Database Commission. Produced by Cecil G. Sheps Center at UNC

NC Acute Care Hospital Discharges per 1,000 Population October 1, 1989 to September 30, 2011



Source: Data from Truven Health Analytics and NC Medical Database Commission. Population data from NC Office of State Planning. Psych, Rehab, LTC and SA facility discharges deleted. Normal newborns (DRG 795) also deleted. NC residents only.