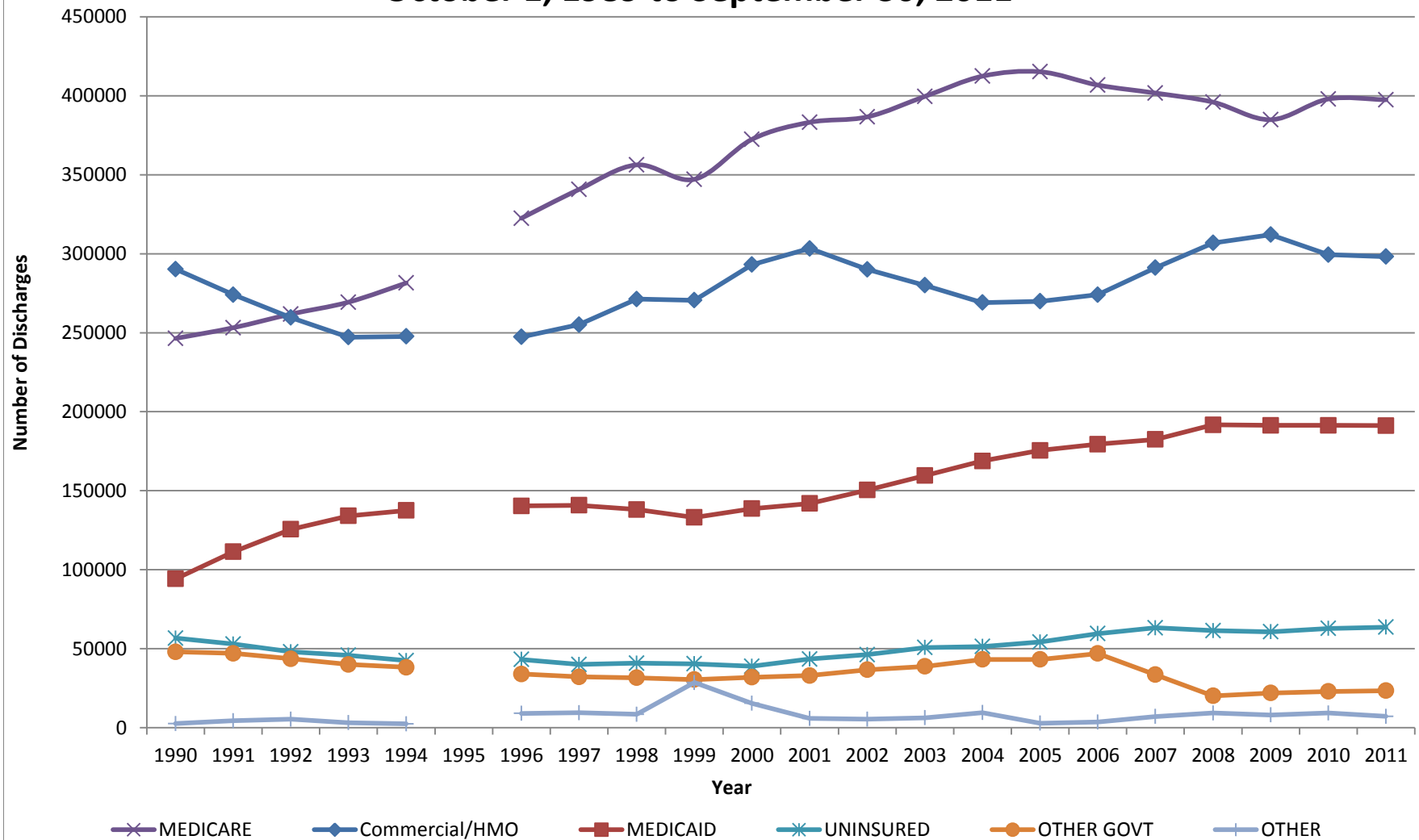
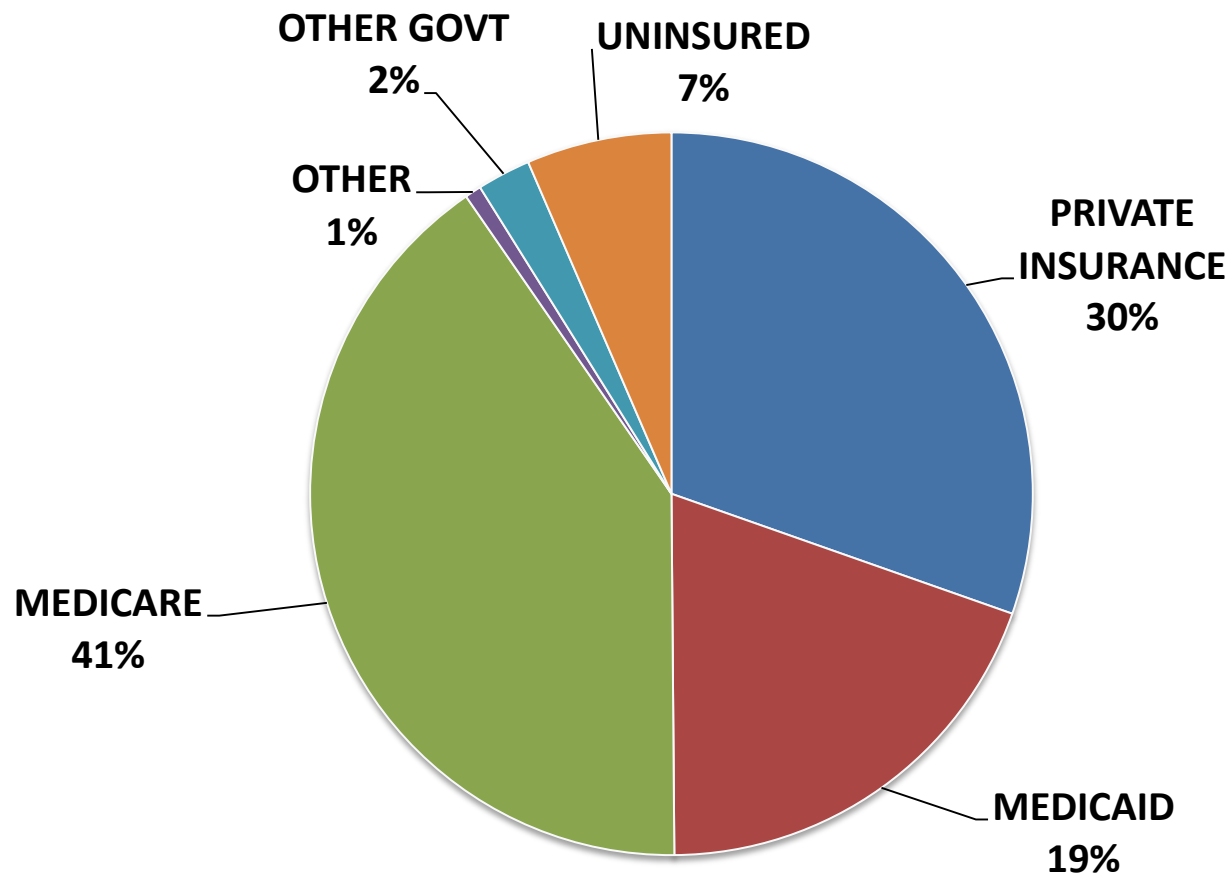


NC Data Payer Distribution October 1, 1989 to September 30, 2011



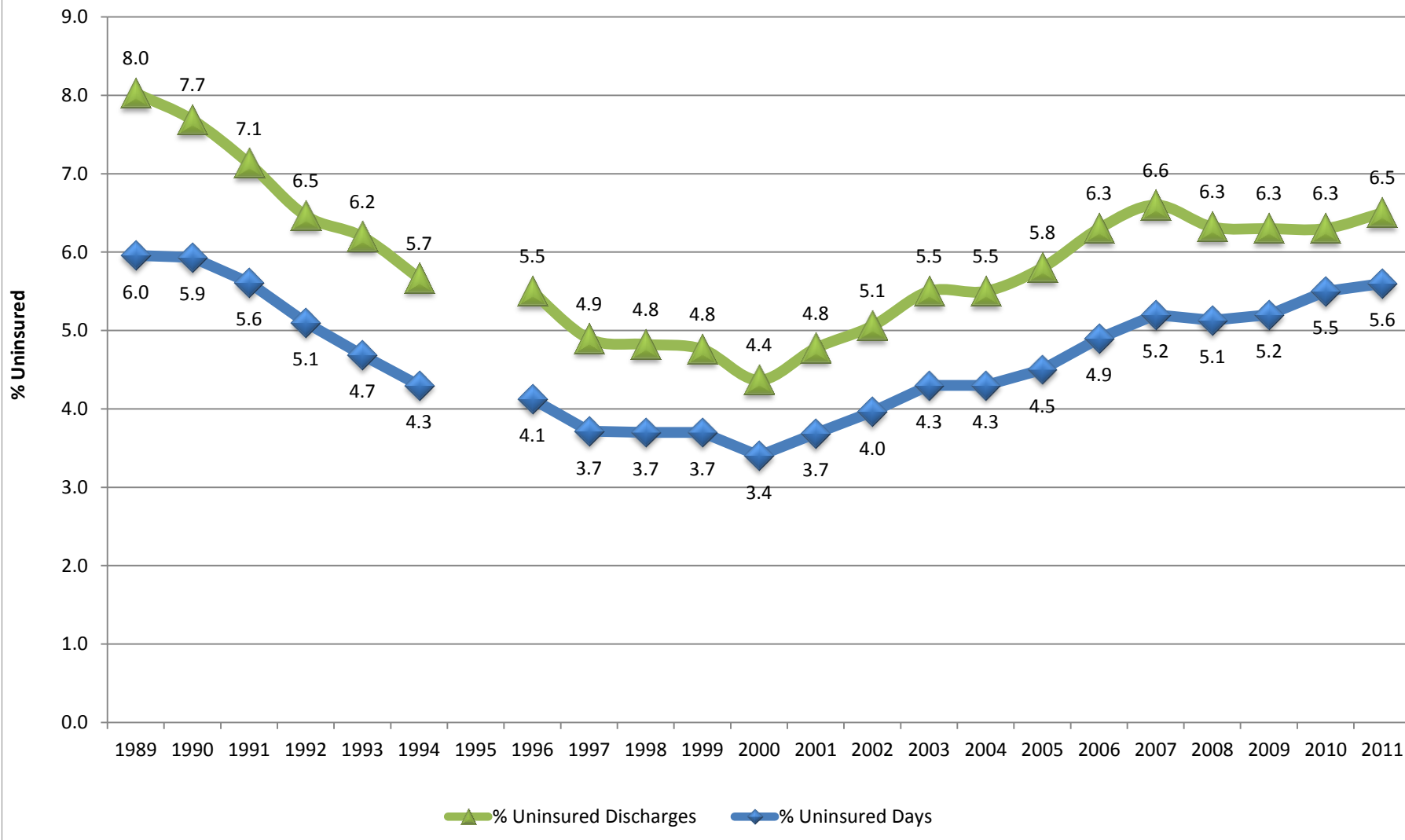
Source: NC Hospital Inpatient Discharge Data from Truven Health Analytics and NC Medical Database Commission. No Newborns, NC Residents only, missing data excluded. Produced by Cecil G. Sheps Center for Health Services Research at UNC, Chapel Hill

NC Acute Care Discharge by Payer October 1, 2010 to September 30, 2011



Source: Truven Health Analytics, NC Hospital Discharge Data, Fiscal Year 2011. No Newborns, NC Residents only, Missing data excluded.
Produced By: Cecil G. Sheps Center for Health Services Research, UNC at Chapel Hill.

NC Uninsured Discharges and Days as Percent of Total October 1, 1988 to September 30, 2011



Source: North Carolina Hospital Inpatient Discharge Data from Truven Health Analytics and the NC Medical Database Commission. All Acute Care Discharges, excluding Normal Newborns. Produced by Cecil G. Sheps Center at UNC Chapel Hill



NC Payer Mix- Acute Care, ED, Ambulatory Surgery

October 1, 2010 to Sept 30, 2011

All discharges and visits

