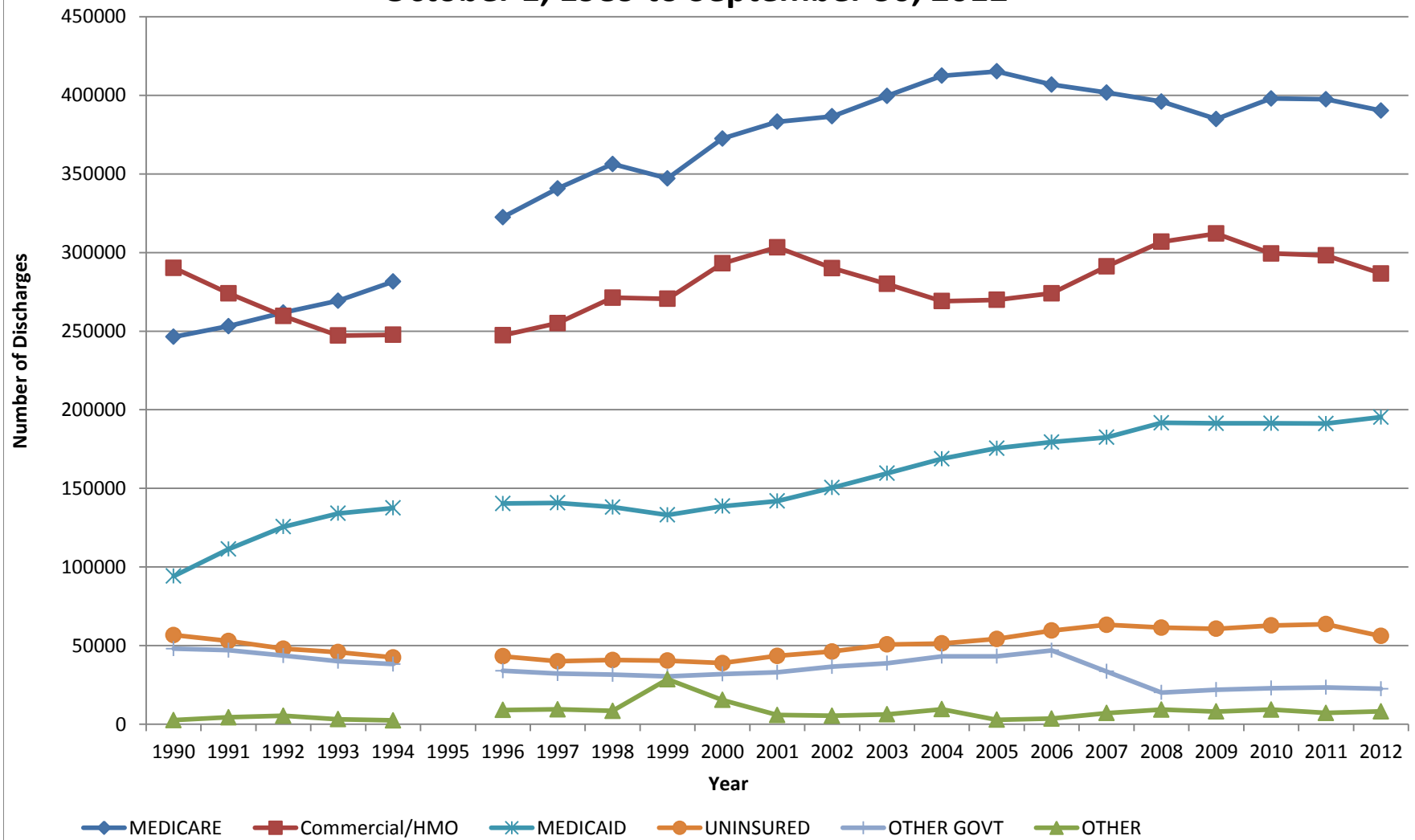
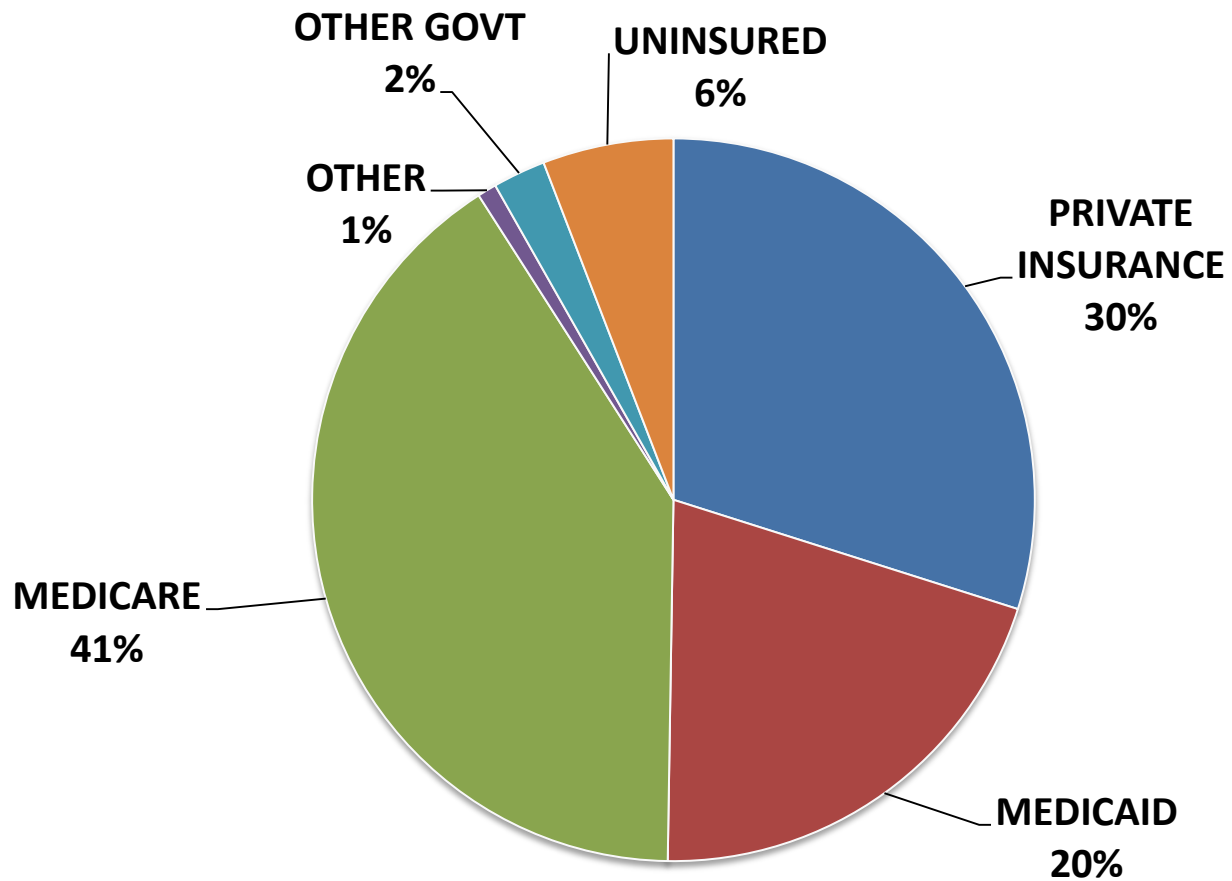


## NC Data Payer Distribution October 1, 1989 to September 30, 2012



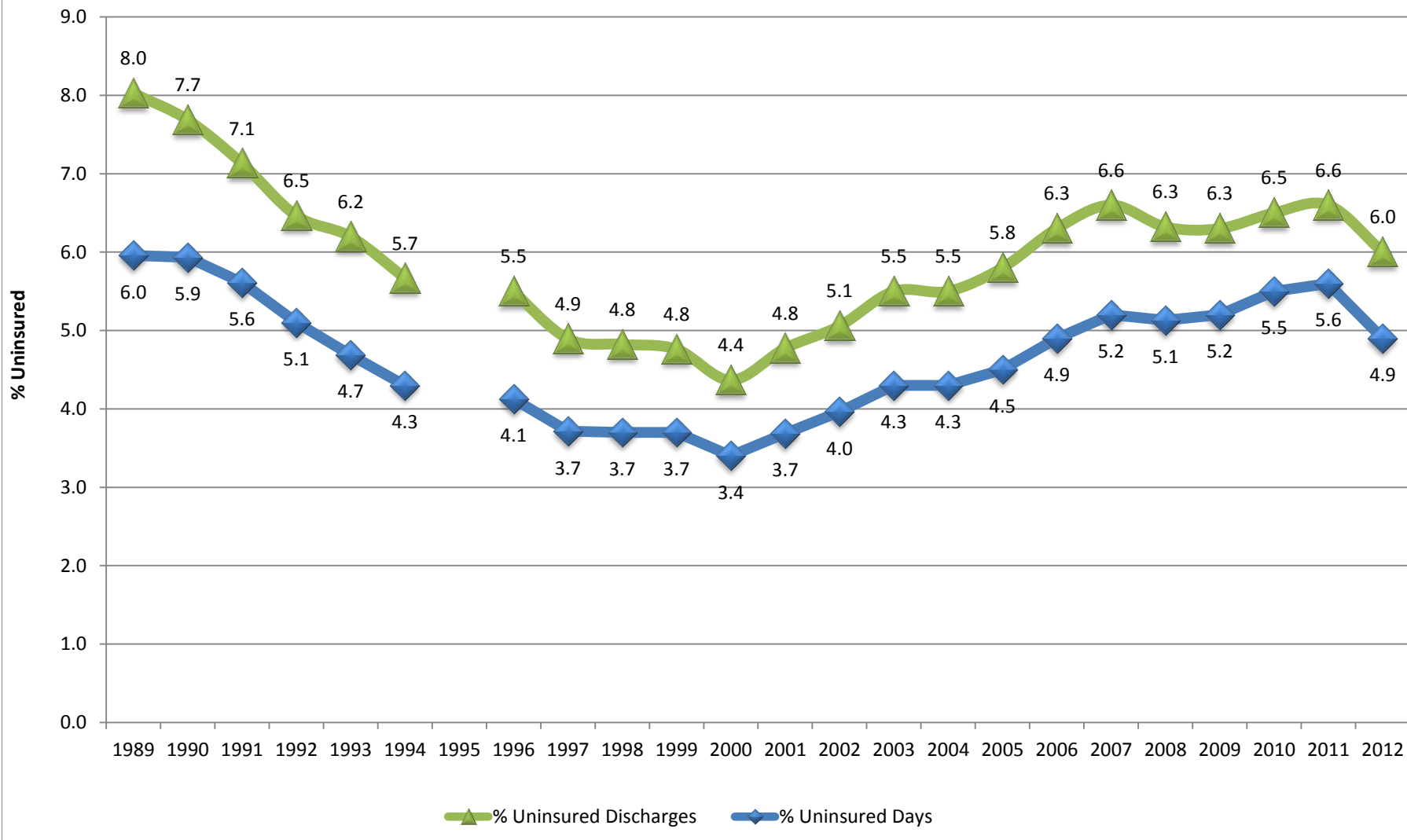
Source: NC Hospital Inpatient Discharge Data from Truven Health Analytics and NC Medical Database Commission. No Newborns, NC Residents only, missing data excluded. Produced by Cecil G. Sheps Center for Health Services Research at UNC, Chapel Hill

### NC Acute Care Discharge by Payer October 1, 2011 to September 30, 2012



Source: Truven Health Analytics, NC Hospital Discharge Data, Fiscal Year 2012. No Newborns, NC Residents only, Missing data excluded.  
Produced By: Cecil G. Sheps Center for Health Services Research, UNC at Chapel Hill.

## NC Uninsured Discharges and Days as Percent of Total October 1, 1988 to September 30, 2012



Source: North Carolina Hospital Inpatient Discharge Data from Truven Health Analytics and the NC Medical Database Commission. All Acute Care Discharges, excluding Normal Newborns. Produced by Cecil G. Sheps Center at UNC Chapel Hill