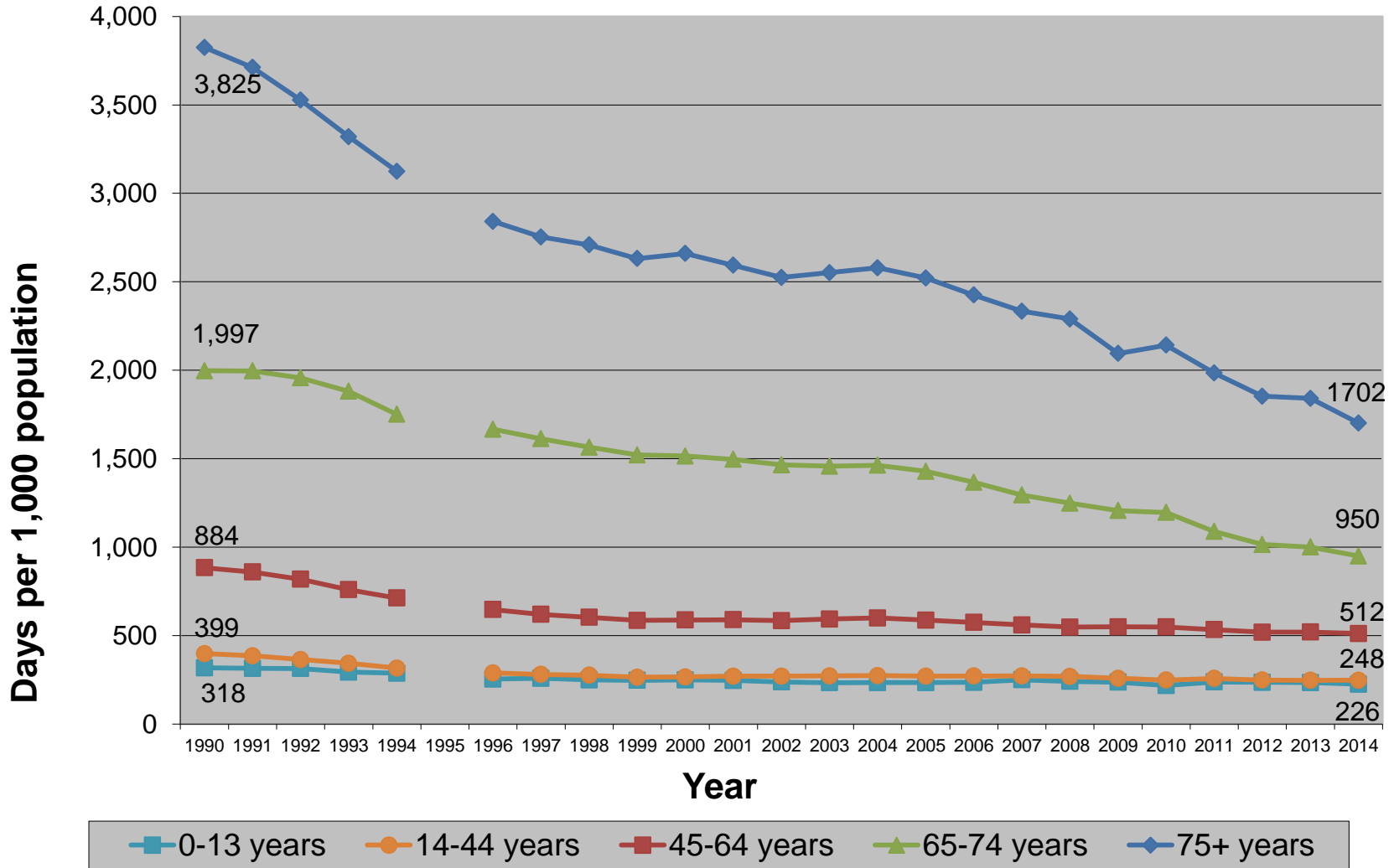
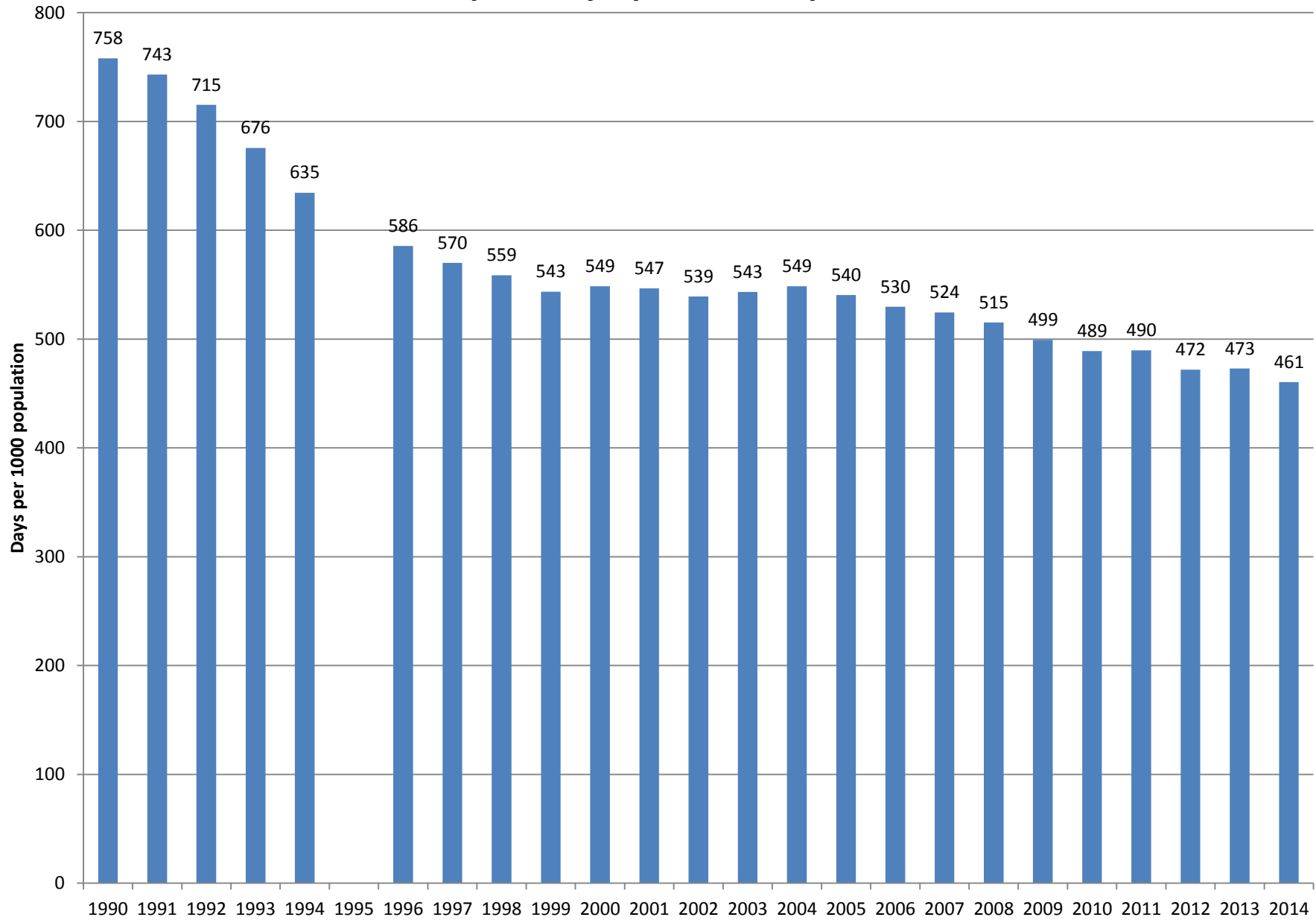


NC Acute Care Hospital Days per 1,000 Population October 1, 1989 to September 30, 2014



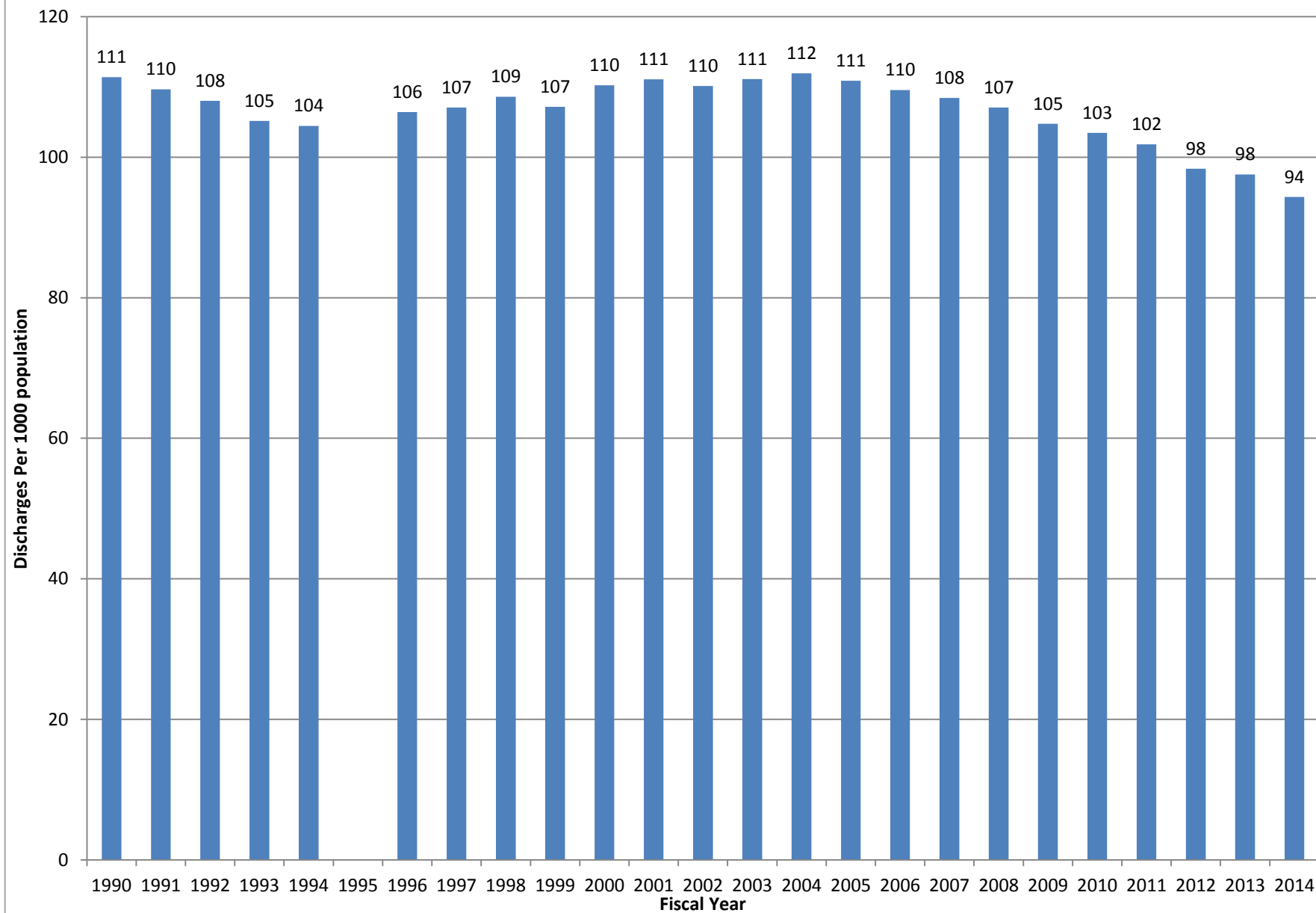
Source: Truven Health Analytics (96-14) and NC Medical Database Commission (90-94), 1995 not reported. Population data from NC Office of State Planning. NC residents only-Acute Hospitals-No Normal Newborns. Produced by Cecil G. Sheps Center at UNC.

NC Acute Care Hospital Days, per 1000 Population, 1990-2014



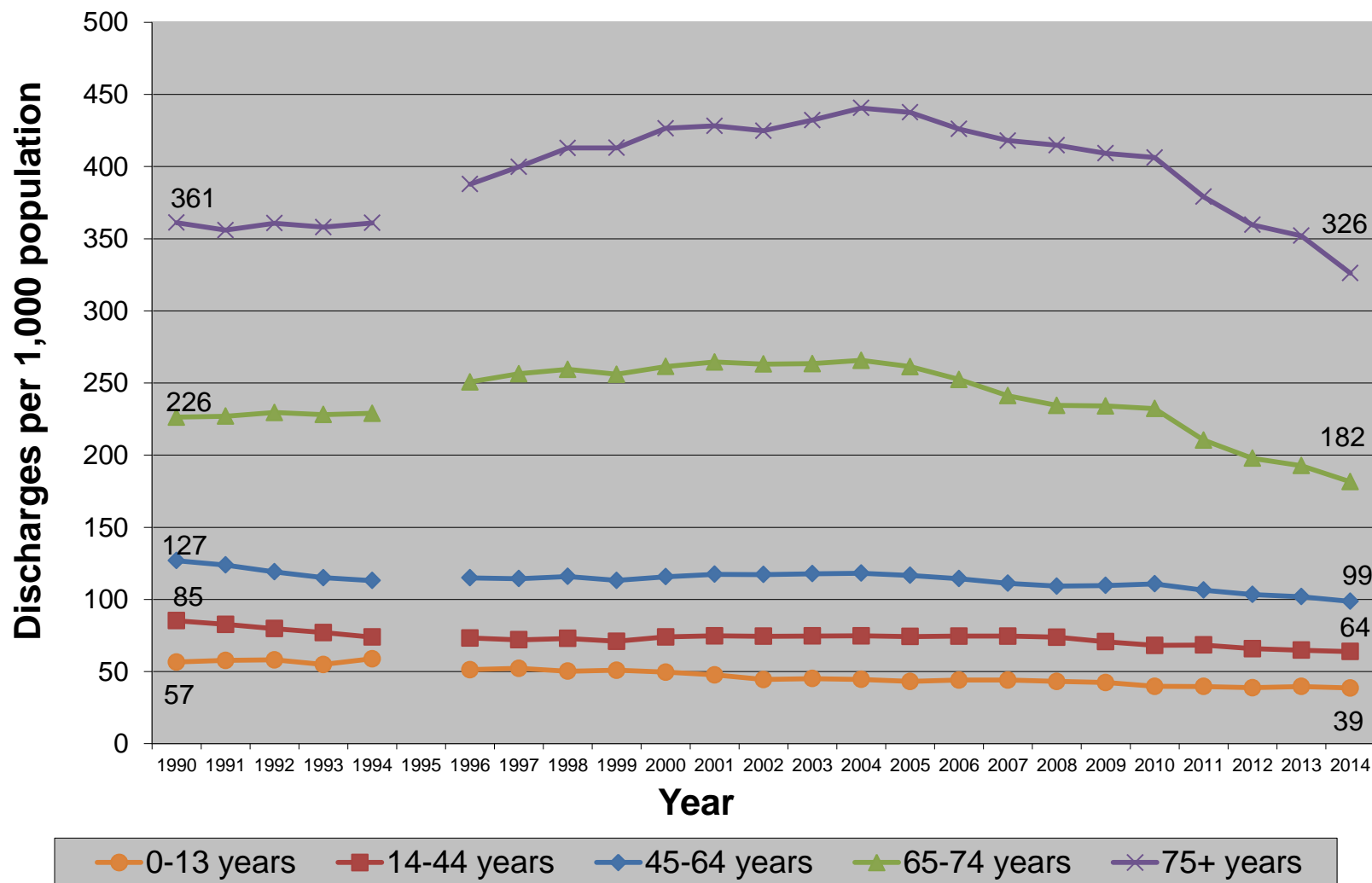
Source: Truven Health Analytics (96-14) and NC Medical Database Commission (90-94), 1995 not reported. Population data from NC Office of State Planning. NC residents only-Acute Hospitals-No Normal Newborns. Produced by Cecil G. Sheps Center at UNC.

NC Acute Care Hospital Discharges, per 1000 population, 1990-2014



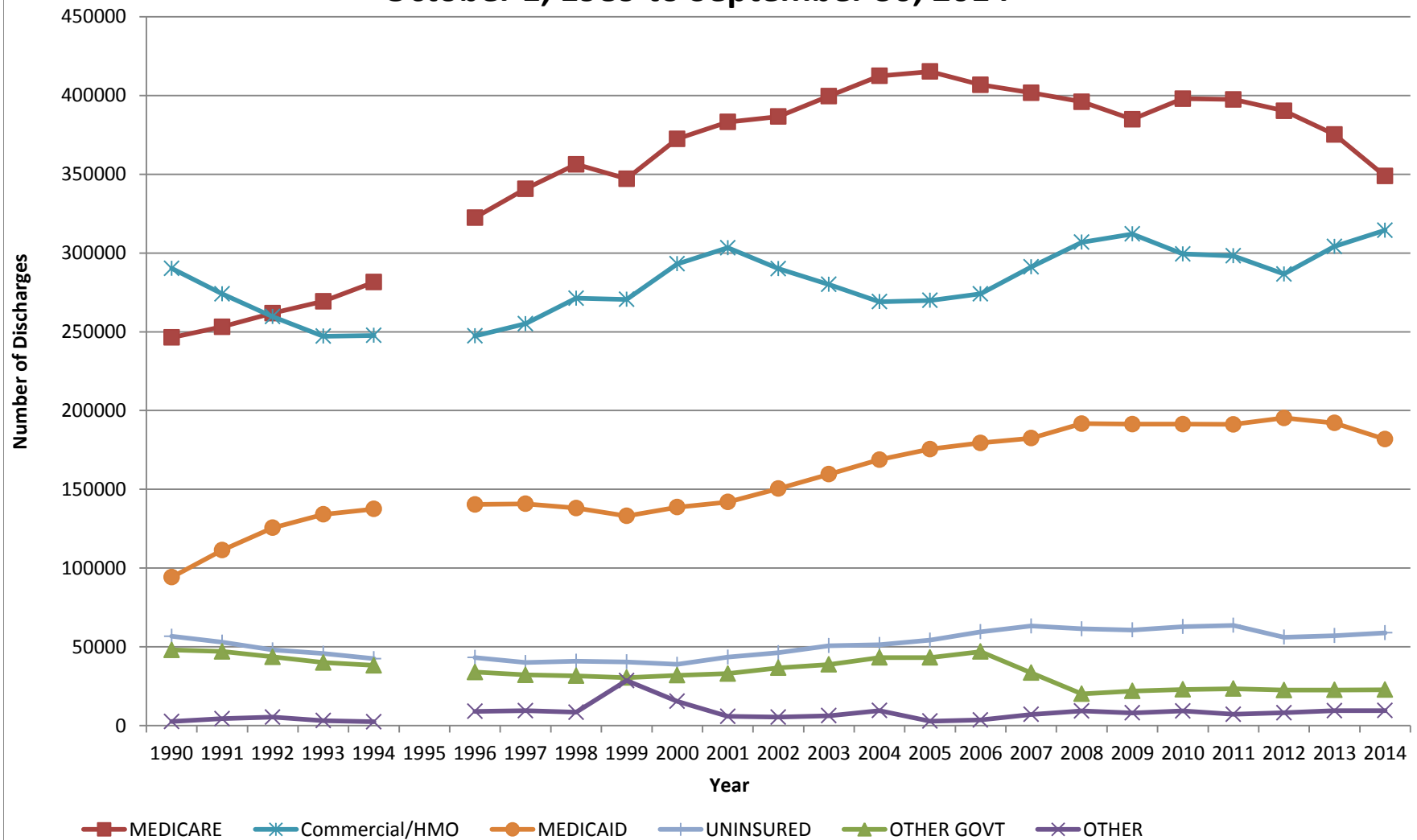
Source: Truven Health Analytics (96-14) and NC Medical Database Commission (90-94), 1995 not reported. Population data from NC Office of State Planning. NC residents only-Acute Hospitals-No Normal Newborns. Produced by Cecil G. Sheps Center at UNC.

NC Acute Care Hospital Discharges per 1,000 Population October 1, 1989 to September 30, 2014



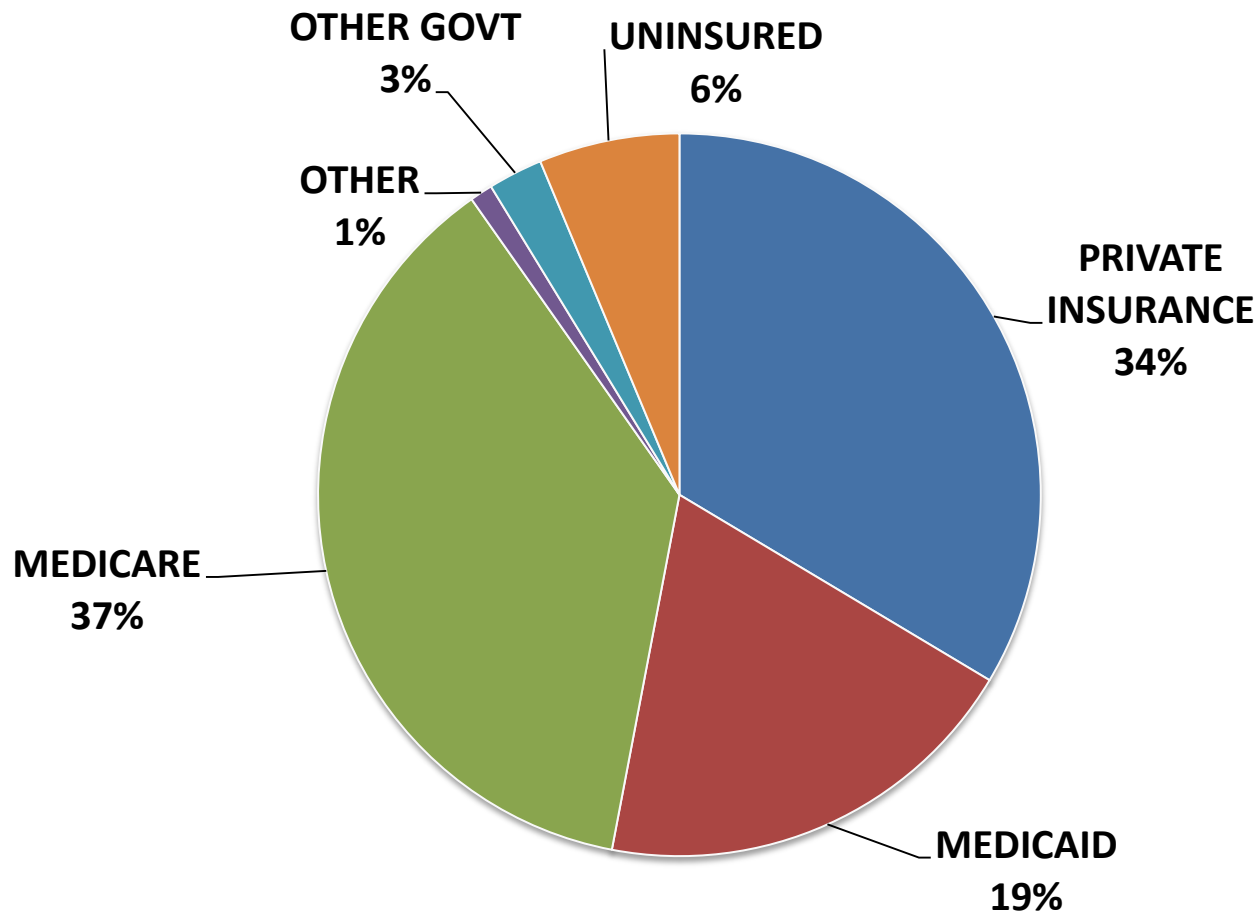
Source: Truven Health Analytics (96-14) and NC Medical Database Commission (90-94), 1995 not reported. Population data from NC Office of State Planning. NC residents only-Acute Hospitals-No Normal Newborns. Produced by Cecil G. Sheps Center at UNC.

NC Data Payer Distribution October 1, 1989 to September 30, 2014



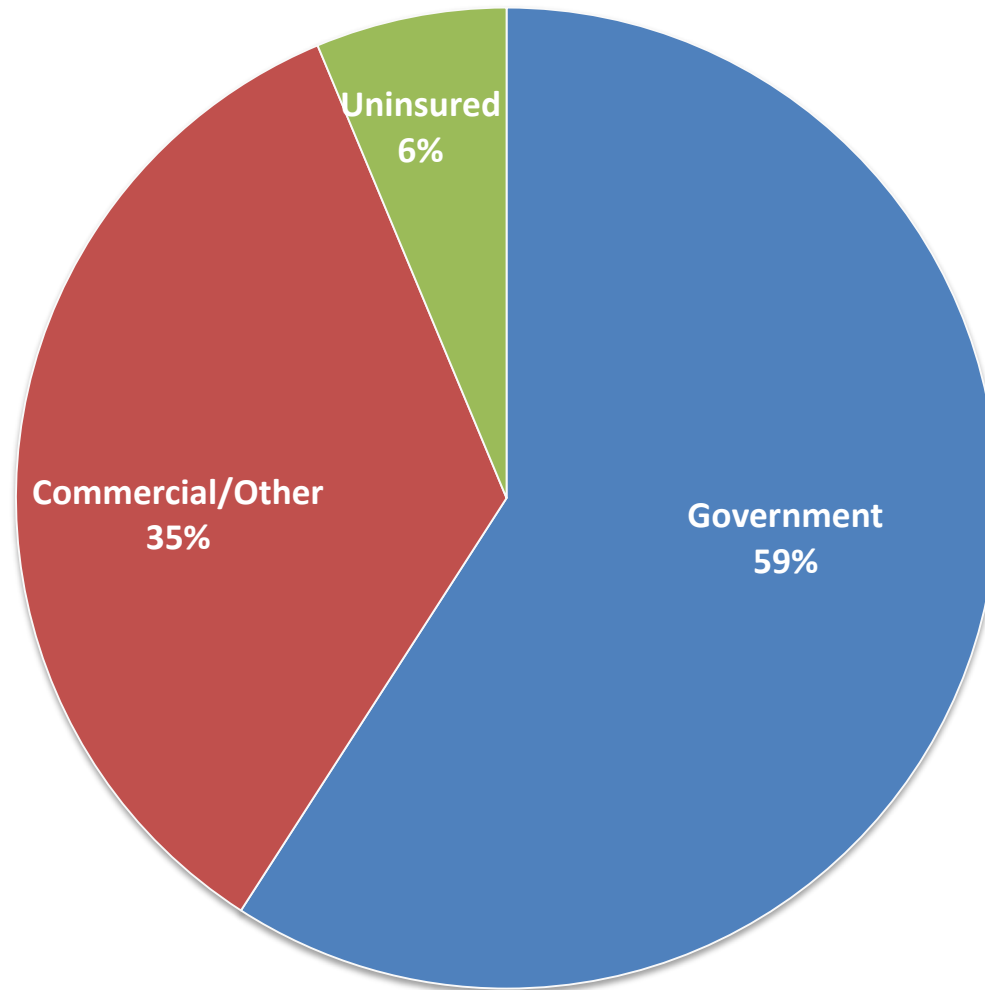
Source: Data from Truven Health Analytics and NC Medical Database Commission, 1995 not reported. No Newborns, NC Residents only, missing data excluded. Produced by Cecil G. Sheps Center for Health Services Research at UNC, Chapel Hill

NC Acute Care Discharge by Payer October 1, 2013 to September 30, 2014



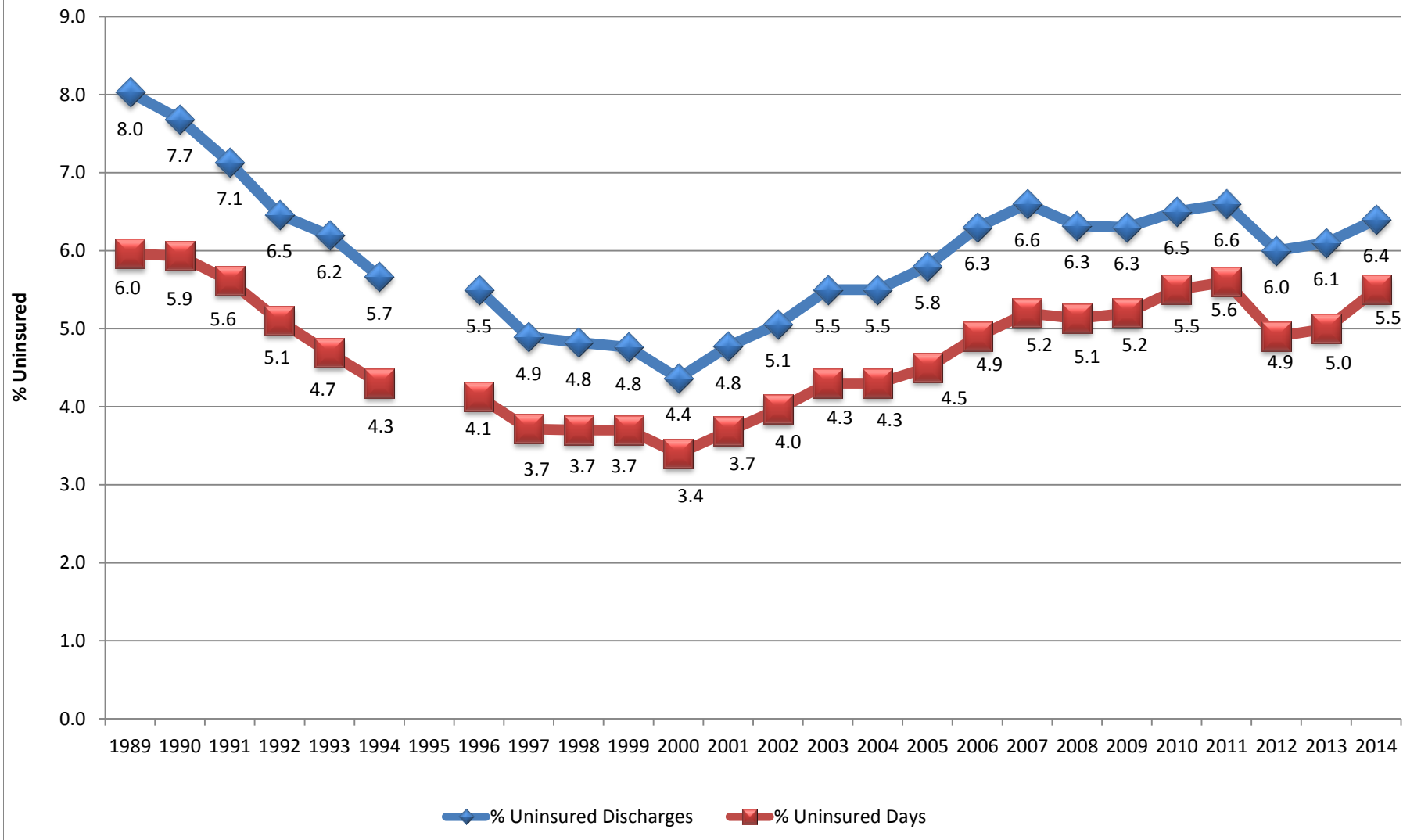
Source: Truven Health Analytics, NC Hospital Discharge Data, Fiscal Year 2014. No Newborns, NC Residents only, Missing data excluded.
Produced By: Cecil G. Sheps Center for Health Services Research, UNC at Chapel Hill.

**NC Acute Care Discharge by Payer, Fiscal Year 2014
October 1, 2013 to September 30, 2014**



Source: Truven Health Analytics, North Carolina Hospital Discharge Data, Fiscal Year 2014. No Newborns, NC Residents only, Missing data excluded.
Produced By: Cecil G. Sheps Center for Health Services Research, UNC at Chapel Hill.

NC Uninsured Discharges and Days as Percent of Total October 1, 1988 to September 30, 2014



Source: Data from Truven Health Analytics and the NC Medical Database Commission, 1995 not reported. All Acute Care Discharges, excluding Normal Newborns. Produced by Cecil G. Sheps Center at UNC Chapel Hill