



UNC

**THE CECIL G. SHEPS CENTER
FOR HEALTH SERVICES RESEARCH**

ANNUAL REPORT

July 1, 2013 - June 30, 2014

**The Cecil G. Sheps Center for Health Services Research
University of North Carolina at Chapel Hill**

725 Martin Luther King Jr. Blvd.
Chapel Hill, NC 27599-7590
<http://www.shepscenter.unc.edu>

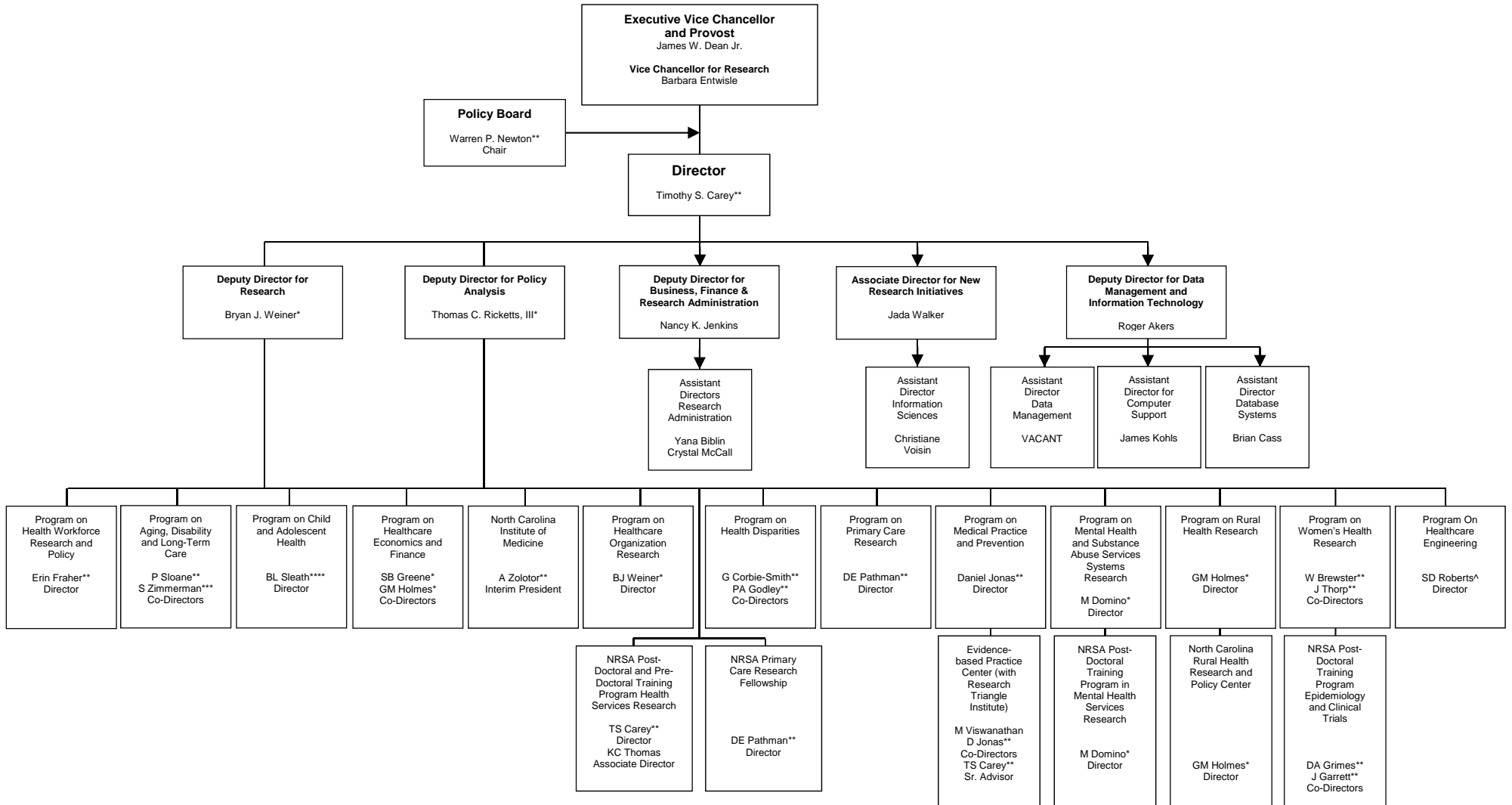
APPENDICES

- Appendix A: Organizational Chart
- Appendix B: Policy Board Members
- Appendix C: Contract and Grant Proposal Success
- Appendix D: Seminars
- Appendix E: Publications

APPENDIX A

Organizational Chart
Cecil G. Sheps Center for Health Services Research
University of North Carolina at Chapel Hill

**Organizational Chart of the Cecil G. Sheps Center for Health Services Research
The University of North Carolina at Chapel Hill**



* Gillings School of Global public Health Faculty Appointment, UNC-CH
 ** School of Medicine Faculty Appointment, UNC-CH
 *** School of Social Work Faculty Appointment, UNC-CH
 **** School of Pharmacy Faculty Appointment, UNC-CH
 ^ Department of Industrial and Systems Engineering, NC State

APPENDIX B

POLICY BOARD MEMBERS

The Cecil G. Sheps Center for Health Services Research

2013-2014

The Cecil G. Sheps Center for Health Services Research is an organizational unit of the University's Division of Health Affairs and, as such, the Center's Director is responsible to the Vice Chancellor for Health Affairs. Oversight responsibility for the Center is vested in a Policy Board whose members include senior faculty and administrators from the five health science schools, as well as representatives of the health services community at large.

Thomas Bacon, PhD
Adjunct Professor
Dept of Social Medicine
School of Medicine

Tim Carey, MD, MPH
Professor of Medicine
Department of Medicine
Director, Sheps Center for Health Services Research

Jo Ann Earp, ScD
Professor
Department of Health Behavior and Health Education
School of Public Health

Ronald J. Falk, MD
Professor and Division Chief
Division of Nephrology and Hypertension
School of Medicine

Sandra B. Greene, PhD
Professor and Chair
Department of Health Policy and Management
Gillings School of Global Public Health

Michael R. Kosorok, PhD, MM
Professor and Chair
Department of Biostatistics
School of Public Health

Jessica Y. Lee, DDS., MPH, PhD
Associate Professor
School of Dentistry

Barbara Mark, RN, PhD
Professor
School of Nursing

Warren P. Newton, MD, MPH (Chair)
Professor and Chair
Department of Family Medicine
School of Medicine

Andrew F. Olshan, PhD
Professor and Chair
Department of Epidemiology
School of Public Health

Herbert B. Peterson, MD
Professor and Chair
Department of Maternal and Child Health
School of Public Health

David Rubinow, MD
Professor and Chair
Psychiatry
School of Medicine

Marschall S. Runge, MD, PhD
Professor and Chair
Department of Medicine
School of Medicine

Betsy Sleath, PhD
Professor and Chair
Division of Pharmaceutical Policy
School of Pharmacy

Alan D. Stiles, MD
Professor
Department of Pediatrics
School of Medicine

Hugh H. Tilson, MD, DrPH
Adjunct Professor
Public Health Leadership Program

Sheps Center:
Roger Akers, Deputy Director, Data Mgt and Info
Nancy Jenkins, Deputy Director, Bus and Finance
Tom Ricketts, Deputy Director, Policy Analysis
Jada Walker, Associate Director, Operations
Bryan Weiner, Deputy Director, Research

APPENDIX C

CONTRACT AND GRANT PROPOSAL SUCCESS

Tables 1.1 - 1.3 summarize the status of proposals submitted and new proposals, supplements/addenda, and resubmissions approved for funding for the 2013-14 fiscal year.

This fiscal year (2013-14), the majority of the proposals were initial submissions of new proposals (68), while 22 were requests for continuation funding for projects already funded, 4 was a request for supplemental funds, and 6 were resubmission of a proposal.

Table 1.1
SUMMARY OF PROPOSAL SUBMISSION AND SUCCESS
July 1, 2013 - June 30, 2014
 (Results as of October 31, 2014)

Status	Initial Submissions	Supplements Addenda	Continuation Applications	Resubmissions	TOTAL
Total Proposals Submitted	68	4	22	6	100
Funding Notification Received:	56	4	21	4	85
Funded	31	3	21	1	56
Not Funded	25	1	0	3	29
No Decision	6	0	1	1	8
Proposals Withdrawn	6	0	0	1	7

* Verbal notification of funding received, pending official notification.

Table 1.2
SUMMARY OF FUNDING FOR NEW PROPOSALS, SUPPLEMENTS/ADDENDA,
AND RESUBMISSIONS APPROVED FOR FUNDING
Submitted July 1, 2013 - June 30, 2014 or Submitted in Previous Years
 (Results as of October 31, 2014)

Status	Number	Percent Funded
<i>Submitted for Funding:</i>		
Submitted This Year	100	
Submitted Previous Years	48	
Total	148	
<i>Funded (including verbal notification) of proposals with funding decision:</i>		
Submitted This Year	56	56 %
Submitted Previous Years	33	69 %
Total	89	60 %

Figure 1.1

**SOURCES AND AMOUNTS OF SUPPORT BY FUNDING SOURCE AND YEAR
(Excluding Indirect Dollars Not Coming To the Sheps Center
and NC•IOM Dollars Not Coming Through the Sheps Center)
2000-2014**

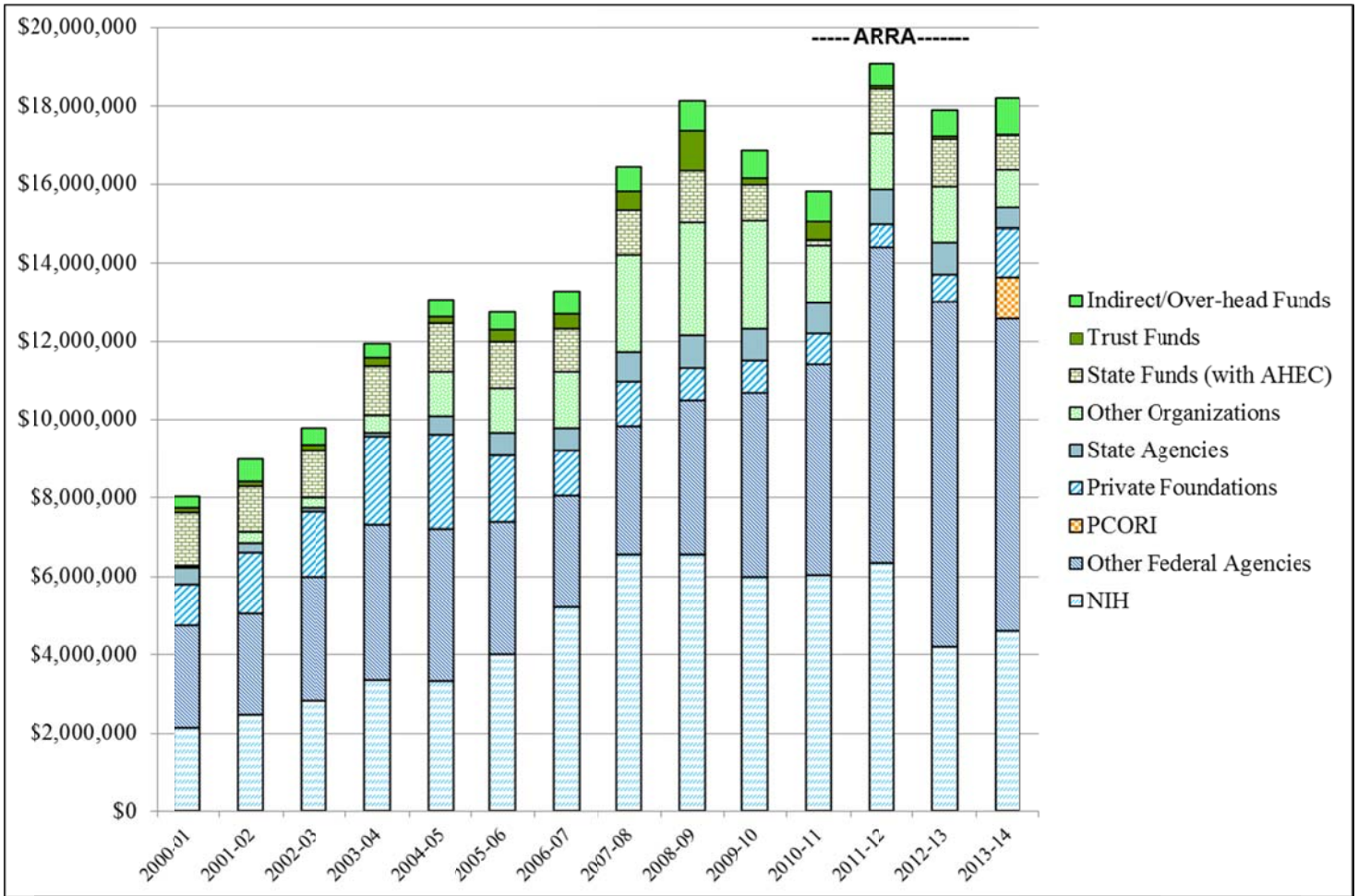


Table 1.3

**UPDATE ON NEW FUNDING
FY 13-14
July 1, 2013 – June 30, 2014
Funding status reported for submissions
(Results as of October 31, 2014)**

(number of proposals)	Year One Award	Total Award
Funded (66)	\$16,034,980	\$18,606,412
Still Outstanding (8)	\$1,359,795	\$ 4,041,181

APPENDIX D

SEMINARS/WORKSHOPS

All seminars/workshops are open to the public and were planned and sponsored or co-sponsored through the Sheps Center during this past fiscal year. Unless otherwise noted, all seminars took place at the Sheps Center. In addition, the Center frequently hosts state and national meetings on research and policy issues. The following is a description of the seminars:

AGENCY FOR HEALTHCARE RESEARCH AND QUALITY (AHRQ)/ NATIONAL RESEARCH SERVICE AWARD (NRSA) SEMINARS

Fall 2013 (Talking with Stakeholders about Research)

Sampling stakeholders: How to find them and get the right mix

Katrina Donahue, M.D. (UNC-CH)

Laura Young, M.D. (UNC-CH)

How to talk with providers about implementation research

Sam Cykert, M.D. (UNC-CH)

How to talk with policymakers about research findings

Erin Fraher, M.D. (UNC-CH)

Introduction to the ICD-10: how much should we be afraid?

Sara Freeman (RTI)

Engaging stakeholders in common spinal disorders research

Michele Crites Battie, Ph.D. (UNC-CH)

Community engagement in medical decision-making

Carol Golin, M.D. (UNC-CH)

How to talk with stakeholders to inform Medicaid's formulary decisions

Dan Jonas, M.D. (UNC-CH)

Spring 2014 (Career Development)

The money river and budgeting

Tim Carey, M.D., M.P.H. (UNC-CH)

Career development awards

Morris Weinberger, Ph.D. (UNC-CH)

Pilot funding

Tim Carey, M.D., M.P.H. (UNC-CH)

Careers in CER and PCOR

Rachael Fleurence, Ph.D. (PCORI)

Budgeting

Tim Carey, M.D., M.P.H. (UNC-CH)

Working in healthcare systems

Darren DeWalt, M.D., M.P.H. (UNC-CH)

UNC-CH/DUKE PROGRAM IN MENTAL HEALTH SERVICES & SYSTEMS RESEARCH SEMINAR SERIES

The location of these seminars alternates between the Cecil G. Sheps Center for Health Services Research, University of North Carolina at Chapel Hill and the Department of Psychiatry and Behavioral Sciences, Duke University.

Fall 2013

Health Policy and Politics in North Carolina

Adam Searing, J.D., M.P.H. (Health Access Coalition for the North Carolina Justice Center)

Enhanced Services for Frequent Flyers in Mental Health Diversion
Sarah Desmarais, Ph.D. (North Carolina State University)

Psychiatric Disorders and Health Outcomes in People Living with HIV: From Chapel Hill to Cameroon
Brian Pence, Ph.D. (UNC-CH)

The Science of Recovery
Lisa Dixon, M.D., M.P.H. (Columbia University, New York State Psychiatric Institute)

Do Preferences of Drinker-Drivers Differ?
Frank Sloan, Ph.D. (Duke University)

WakeBrook: A Behavioral Health Partnership Between UNC Health Care And Wake County
Brian Sheitman, M.D. (UNC WakeBrook Project)

Spring 2014

Translating Research on Vulnerability and Protective Factors to Inform Mental Health Services for Children
Heather Pane, Ph.D. (Duke University)

Mental Health Services Research: Report on Three Projects
Michele Easter, Ph.D. (Duke University)

The Use of Medical Homes by Patients with Complex Mental Health and Medical Comorbidities
Marisa Elena Domino, Ph.D. (UNC-CH)

Improving Health and Healthcare in People with Serious Mental Illnesses
Benjamin G. Druss, M.D., M.P.H. (Emory University)

How Portrayals of Mental Illness and Addiction Treatment as Effective Influence Stigma and Public Policy Support: Results from A Randomized Experiment
Colleen L. Barry, Ph.D., M.P.P. (Johns Hopkins)

Public Health Perspectives on Gun Violence and Mental Illness: Balancing Risk, Rights, Rhetoric, and Research in Federal and State Policy Solutions
Jeffrey Swanson, Ph.D. (Duke University)

North Carolina's path to Mental Health 'Reform'
Marvin Swartz, M.D. (Duke University)

Scaling up Evidence-based Practices for Children and Families in State Systems
Kimberly Hoagwood, Ph.D. (New York University)

A Behavioral Economic Approach to the Treatment Gap in Mental Health Services
Daniel Eisenberg, Ph.D. (University of Michigan)

The Effects of Expedited Medicaid Enrollment on the Risk of Mortality for Released Inmates with SMI: Evidence from a Quasi-Experiment in Washington State
Jennifer Jolley, Ph.D. (Cecil G. Sheps Center for Health Services Research)

DANUBE UNIVERSITY AT KREMS-RTI INTERNATIONAL-UNC AT CHAPEL HILL METHODS (DUK-RTI-UNC) SEMINAR SERIES FOR SYSTEMATIC REVIEWS AND META-ANALYSES

Fall 2013

Stopping randomized trials early for benefit
Anna Glechner (Duke University)

Barriers and facilitators in the implementation of interventions to prevent publication bias
Barbara Nußbaumer (Duke University)

Using Intermediate and Health Outcomes in Establishing the Effectiveness of Clinical Preventive Services
Daniel E. Jonas (UNC-CH)

Spring 2014

Framing and Analyzing Complex Multicomponent Interventions for Systematic Reviews

Meera Viswanathan (RTI)

Abstract R

Byron Wallace (Brown University)

EQUATOR Network

Iveta Simerá (Equator Network)

New EPC Guidance for Strength of Evidence

Nancy Berkman (RTI)

Advantages and Disadvantages of Subgroup Analyses in Systematic Reviews

Peter Mählknecht (Duke University)

TRIANGLE HEALTH ECONOMICS WORKSHOP SERIES

Attendance is open to all interested persons. Regular attendees included faculty and doctoral students from UNC academic departments (Health Policy and Management, Economics, Public Policy, and Pharmaceutical Policy and Evaluative Sciences), Sheps Center fellows, faculty and students from Duke University departments (Economics, Public Policy, the Business School, and the Center for Health Policy and Law), Research Triangle Institute researchers, and, on occasion, faculty from North Carolina State University, East Carolina University, the University of North Carolina at Greensboro.

Fall 2013

Discussion of The Oregon Experiment: Effects of Medicaid on Clinical Outcomes

Katherine Baicker (Harvard School of Public Health)

Review of Rational Addiction Models

Brett Matsumoto (UNC-CH)

Peer Effects: discussion of 'Estimating the Effects of Friendship Networks on Health Behaviors of Adolescents'

Forrest Spence (UNC-CH)

Insurer Competition and Negotiated Hospital Prices

Robin Lee (New York University)

Why Medical Innovation is Valuable: Health, Human Capital and the Labor Market

Nick Papageorge (Johns Hopkins)

Demand for Health: An Empirical Model of Health Production in China

Riha Vaidya (UNC-CH)

Health Insurance for "Humans": Information Frictions, Plan Choice, and Consumer Welfare

Jonathan Kolstad (Wharton)

The Effects of Maternal Employment and Non-Parental Child Care on Early Childhood Development

Didem Pekkurnaz (UNC-CH)

Spring 2014

The Impact of Education on Family Formation: Quasi-Experimental Evidence from the UK (with Damon Clark and Michael Geruso)

Heather Royer (Applied Microeconomics, UCSB)

The Costs and Benefits of Expanding Medicaid: Evidence from the Oregon Health Insurance Experiment

Katherine Baicker (Harvard School of Public Health)

How do patents affect follow-on innovation? Evidence from the assignment of patent applications to examiners

Heidi Williams (MIT)

In addition, the Center frequently hosts state and national meetings on research and policy issues.

APPENDIX E

PUBLICATIONS

This past year affiliated research staff working on Center-related projects published 246 articles, book chapters, or other reports. This included 204 articles in peer-reviewed journals, 42 other publications, including annual reports, briefs, data books, evidence reports, fact sheets, reviews, and working papers.

Peer-reviewed journals:

- Aguilar-Gaxiola S, Ahmed S, Franco Z, Kissack A, Gabriel D, Hurd T, Ziegahn L, Bates NJ, Calhoun K, Carter-Edwards L, Corbie-Smith G, Eder MM, Ferrans C, Hacker K, Rumala BB, Strelnick AH, Wallerstein N. Towards a unified taxonomy of health indicators: academic health centers and communities working together to improve population health. *Acad Med*. 2014 Apr;89(4):564-72. doi: 10.1097/ACM.000000000000198.
- Albritton T, Hodge-Sallah S, Akers A, Blumenthal C, O'Brien S, Council B, Muhammad M, Corbie-Smith G. A Process Evaluation of an HIV/STI Intervention for Rural African American Youth. *Qual Health Res*. 2014 Jun 17;24(7):969-982 PMID: 25364312 [PubMed]
- Allicock M, Carr C, Orr M, Kahwati LC, Weiner BJ, Kinsinger L. Training veterans to provide peer support in MOVE!: a weight management program. *Prev Chronic Dis*. 2013 Nov 7;10:E185.
- Ammerman AS, Keyserling TC. Designing and Implementing a Comparative Effectiveness Study of Two Strategies for Delivering High Quality CHD Prevention: Methods and Participant Characteristics for the Heart to Health Study. *Contemporary Clinical Trials*. 36:394-405, 2013. doi: 10.1016/j.cct.2013.07.013.
- Bailey SC, Belter L, Pandit AU, Carpenter DM, Wolf MS. (2014) The availability, functionality, and quality of mobile applications supporting medication self-management. *Journal of the American Medical Informatics Association*, 21(2): 542-546.
- Beadles, CA, Hassmiller Lich, K, Viera, AJ, Greene, SB, Brookhart, MA, Weinberger, M. A non-experimental study of oral anticoagulation therapy initiation before and after national patient safety goals. *British Medical Journal*. Vol. 4;2. Feb 12 2014.
- Beadles, CA, Hassmiller Lich, K, Viera, AJ, Greene, SB, Brookhart, MA, Weinberger, M. Patient-Centered Medical Homes and Oral Anticoagulation Therapy Initiation. *Medical Care Research Review*. Vol. 71:2, pp.174-91. April 2014. Epub 2013 Nov 19.
- Beaubrun AC, Kilpatrick RD, Freburger JK, Bradbury BD, Brookhart MA. Temporal trends in fracture rates and postdischarge outcomes among hemodialysis patients. *J Am Soc Nephrol* 2013; 24(9):1461-9.
- Beeber AS, Cohen LW, Zimmerman S, Gwyther LP, Washington T, Cagle JC, & Reed D. (2013). Differences in assisted living staff perceptions, experiences, and attitudes. *Journal of Gerontological Nursing* 40(1), 41-49.
- Beeber AS, Zimmerman S, Reed D, Mitchell CM, Sloane PD, Harris-Wallace B, Perez R, Schumacher JG. Licensed nurse staffing and health service availability in residential care and assisted living. *J Am Geriatr Soc*. 2014 May;62(5):805-11. doi: 10.1111/jgs.12786. Epub 2014 Apr 18. PubMed PMID: 24749761; PubMed Central PMCID: PMC4024069.
- Beil H, RG Rozier, J Preisser, SC Stearns, and JY Lee. "Effects of Early Dental Office Visits on Dental Caries Experience." Posted online October 2013, *American Journal of Public Health*
<http://ajph.aphapublications.org/doi/pdf/10.2105/AJPH.2013.301325>.
- Bengtson, LGS, A Kucharska-Newton, LM Wruck, LR Loehr, AR Folsom, LY Chen, WD Rosamond, S Duval, PL Lutsey, SC Stearns, C Sueta, HC Yeh, E Fox, A Alonso. "Comparable Ascertainment of Newly-Diagnosed Atrial Fibrillation Using Active Cohort Follow-Up versus Surveillance of Centers for Medicare and Medicaid Services in the Atherosclerosis Risk in Communities Study" *PLOS One* (www.plosone.org), 9(4):e94321, April 2014.
- Biese K, M LaMantia, F Shofer, B McCall, E Roberts, SC Stearns, S Principe, JS Kizer, CB Cairns, and J Busby-Whitehead. "A Randomized Trial Exploring the Effect of Telephone Call Follow-up on Care Plan Compliance Among Older Adults Discharged Home from the Emergency Department." *Academic Emergency Medicine*. 21(2):188-195, February 2014.

- Birken SA, Deal AM, Mayer DK, Weiner BJ. Determinants of survivorship care plan use in United States cancer programs. *J Cancer Educ* 2014 Apr 6 [epub ahead of print]
- Birken SA, Deal AM, Mayer DK, Weiner BJ. Following through: the consistency of survivorship care plan use in United States cancer programs. *J Cancer Educ*. 2014 Feb 28 [epub ahead of print].
- Birken SA, Lee SY, Weiner BJ, Chin MH, Chiu M, Schaefer CT. From strategy to action: how top managers' support increases middle managers' commitment to innovation implementation in health care organizations. *Health Care Manage Rev*. 2014 Feb 21. [epub ahead of print].
- Black KZ, Hardy CY, De Marco M, Ammerman AS, Corbie-Smith G, Council B, Ellis D, Eng E, Harris B, Jackson M, Jean-Baptiste J, Kearney W, Legerton M, Parker D, Wynn M, Lightfoot A. Beyond incentives for involvement to compensation for consultants: increasing equity in CBPR approaches. *Prog Community Health Partnersh*. 2013 Fall;7(3):263-70. doi: 10.1353/cpr.2013.0040.
- Blakeney N, Michaels M, Green M, Richmond A, Long D, Robinson WS, Spicer C, Elliott-Bynum S, Corbie-Smith G. Collaborative Development of Clinical Trials Education Programs for African-American Community-Based Organizations. *J Cancer Educ*. 2014 Jun 8. PMID: 24906502 [PubMed - as supplied by publisher]
- Bogasky S, SC Stearns, S Sheingold. "Medicare's Hospice Benefit: Analysis of Utilization and Resource Use" *Medicare and Medicaid Research & Review*, 4(2):E1-E14, 2014. doi: <http://dx.doi.org/10.5600/mmrr.004.02.b03>
- Bowers B, Cohen LW, Elliot A, Grabowski DC, Fishman NW, Sharkey SS, Zimmerman S, Horn SD, & Kemper P. (2013). Creating and supporting a mixed methods health services research team. *Health Services Research Journal*, 48(6), 2157-2180.
- Brenner AT, Howard K, Lewis C, Sheridan S, Crutchfield T, Hawley S, Reuland D, Kistler C, Pignone M. Comparing 3 Values Clarification methods for Colorectal Cancer Screening Decision-Making: A Randomized Trial in the US and Australia. *Journal of General Internal Medicine*. 2014 Mar; 29(3):507-13. doi: 10.1007/s11606-013-2701-0. PMID: 24272830
- Bunger A, Chuang E, Collins-Camargo C, Pérez Jolles M, McBeath B, Wells R. (2014). Collaboration, Competition and Co-opetition: Inter-organizational Dynamics Between Private Child Welfare Agencies and Child Serving Sectors. *Children and Youth Service Review*, 38(0), 113-122.
- Cagle JG, Zimmerman S, Cohen L, Porter L, Hanson LC, Reed DE. (2014). EMPOWER: an intervention to address barriers to pain management in hospice. *J Pain Symptom Manage*, [Epub ahead of print].
- Carey TS & Freburger J. (2014). Physical therapy for low back pain: What is it, and when do we offer it to patients? *Annals of Family Medicine*, 12(2), 99-101.
- Carey TS, Crotty KA, Morrissey JP, Jonas DE, Thaker S, Ellis AR,...Viswanathan M. (2013). Future research needs for evaluating the integration of mental health and substance abuse treatment with primary care. *Journal of Psychiatric Practice*, 19(5), 345-359.
- Carpenter DM, Ayala GX, Williams D, Yeatts K, Davis S, Sleath BL. (2013) The relationship between patient-provider communication and quality of life for children with asthma and their caregivers. *Journal of Asthma*, 50(7): 791-8.
- Carpenter DM, Elstad EA, Blalock S, & DeVellis RF. (2014) Conflicting medication information: Prevalence, sources and relationship to medication adherence. *Journal of Health Communication*, 19(1): 67-81.
- Carpenter DM, Stover A, Slota C, Ayala GX, Yeatts K, Tudor G, Davis S, Williams D, Sleath BL. (2014) An evaluation of physicians' engagement of children with asthma in treatment-related discussions. *Journal of Child Health Care*, 18(3): 261-274.
- Cené CW, Haymore LB, Ellis D, Whitaker S, Henderson S, Lin FC, Corbie-Smith G. Implementation of the power to prevent diabetes prevention educational curriculum into rural African American communities: a feasibility study. *Diabetes Educ*. 2013 Nov-Dec;39(6):776-85. doi: 10.1177/0145721713507114. Epub 2013 Oct 15.

- Cené CW, Haymore LB, Lin FC, Laux J, Jones CD, Wu JR, Dewalt D, Pignone M, Corbie-Smith G. Family member accompaniment to routine medical visits is associated with better self-care in heart failure patients. *Chronic Illn*. 2014 Apr 16. [Epub ahead of print]
- Chung AE, Perrin EM, Skinner AC. "Accuracy of Child and Adolescent Weight Perceptions and Their Relationships to Dieting and Exercise Behaviors: NHANES." *Acad Pediatr*. 2013 Jul Aug;13(4):371-8. doi: 10.1016/j.acap.2013.04.011. Accepted 4/20/2013.
- Cohen LW, Zimmerman S, Reed A, Sloane PD, Beeber AS, Washington T, Cagle JG, & Gwyther LP. (2014). Dementia in relation to family caregiver involvement and burden in long-term care. *Journal of Applied Gerontology*, 33(5), 522-540.
- Concannon TW, Guise J, Dolor RJ, Meissner P, Tunis S, Krishnan JA, . . . Carey TS. (2014). A national strategy to develop pragmatic clinical trials infrastructure. *Clinical and Translational Science*, 7(2), 164-171.
- Cuddeback GS, Shattell MM, Bartlett R, Yoselle J, & Brown D. (2013). Consumers' perceptions of transitions from assertive community treatment to less intensive services. *Journal of Psychosocial Nursing and Mental Health Services*, 51(8), 39-45.
- Cuddeback GS, Wright D, & Bisig NG. (2013). Characteristics of participants in jail diversion and prison reentry programs: Implications for forensic ACT. *Psychiatric Services*, 64(10), 1043-1046.
- Cykert S. (2014). A New Paradigm: Approaching Racism as a Method of Disease Prevention. *Chest* 145 (3):442-443.
- Daaleman TP, Reed D, Cohen LW, & Zimmerman S. (2014). Development and preliminary testing of the quality of spiritual care scale. *Journal of Pain and Symptom Management*, 47(4), 793-800.
- Dalton AF, Bunton AJ, Cykert S, Corbie-Smith G, Dilworth-Anderson P, McGuire FR, Monroe MH, Walker P, Edwards LJ. (2014). Patient characteristics associated with favorable perceptions of patient-provider communication in early-stage lung cancer treatment. *J Health Commun*;19(5):532-44.
- Data-Driven Improvement in Care and Patient Outcomes. *N C Med J*. May/June 2014;75(3):153-224.
- DeFrank JT, Barclay C, Sheridan S, et al. The psychological harms of screening: the evidence we have versus the evidence we need. *J Gen Intern Med* 2014(e-published). PMID: 25150033.
- Desai RJ, Williams CE, Greene SB, Pierson S, Hansen RA. Anticoagulant medication errors in nursing homes: characteristics, causes, outcomes, and association with patient harm. *Journal of Healthcare Risk Management* 33(1):pp.33-43. 2013
- DeWalt DA, Thissen D, Stucky BD, Langer MM, Morgan DeWitt E, Irwin DE, Lai JS, Yeatts KB, Gross HE, Taylor O, & Varni JW. (2013). PROMIS Pediatric Peer Relationships Scale: Development of a peer relationships item bank as part of social health measurement. *Health Psychology*, 32(10), 1093.
- Dill JS, Morgan JC, Weiner BJ. Frontline health care workers and perceived career mobility: do high-performance work practices make a difference? *Health Care Manag Rev*. 2013 Aug 28 [epub ahead of print]
- Domino ME, & Beadles CA. (2014). State investments in psychiatric innovation: Investigating unmeasured state factors. *Health Services and Outcomes Research Methodology*, 14(1-2), 34-53.
- Donahue KE, J Halladay, A Wise, KL Reiter, SY Lee, K Ward, CM Mitchell, B Qaqish. (2013). Facilitators of Primary Care Transformation: A look under the hood at leadership and engagement. *Annals of Family Medicine*. 11(Suppl 1): S27-S33.
- Donahue KE, Vu MB, Halladay JR, Miller C, Garcia BA, Cummings DM, Cene CW, Hinderliter A, Little E, Rachide M, DeWalt D. Patient and practice perspectives on strategies for controlling blood pressure, North Carolina, 2010-2012. *Prev Chronic Dis*. 2014 Apr 24;11:E69; quiz E69. doi: 10.5888/pcd11.130157.
- Education of Health Professionals. *N C Med J*. January/February 2014; 75(1):1-88.

- Edwards M, Quinlivan EB, Bess K, Gaynes BN, Heine A, Zinski A, Modi R, Pence BW. (2014). Implementation of PHQ-9 depression screening for HIV-infected patients in a real-world setting. *Journal of the Association of Nurses in AIDS Care*, 25(3), 243-252.
- Einterz SF, Gilliam R, Lin FC, McBride JM, Hanson LC. (2014). Development and testing of a decision aid on goals of care for advanced dementia. *JAMDA*, 15(4), 251-255.
- Elliot A, Cohen LW, Reed D, Nolet K, & Zimmerman S. (2014). A “recipe” for culture change? Findings from the THRIVE survey of culture change adopters. *The Gerontologist*, 54(Supplement 1), 17-24.
- Elstad EA, Sheridan SL, Lee JG, et al. Have screening harms become newsworthy? News coverage of prostate and colorectal cancer screening since the 2008 USPSTF recommendation changes. *J Behav Med* 2014(e-published). PMID: 24859436.
- Ersek M, Sefcik JS, Lin FC, Lee TJ, Gilliam R, Hanson LC. (2014). Provider staffing effect on a decision aid intervention. *Clin Nurs Res*, 23(1), 36-53.
- Feltner C, Jones CD, Cené CW, Zheng ZJ, Sueta CA, Coker-Schwimmer E, Arvanitis M, Lohr KN, Middleton JC, Jonas DE. Transitional Care Interventions to Prevent Readmissions for People with Heart Failure: a Systematic Review and Meta-analysis. *Ann Intern Med*. 2014 Jun 3;160 (11):774-84. doi: 10.7326/M14-0083.
- Forneris CA, Gartlehner G, Jonas DE, Lohr K. Preventing and Treating PTSD and Related Conditions in Adults: A Research Agenda. RTI Press, publication RB-0005-1309. Sept 2013. DOI:10.3768/rtipress.2013.rb.0005.1309.
- Fraher EP, Ricketts TC, Lefebvre A, Newton W. 2013. The Role of Academic Health Centers and Their Partners in Reconfiguring and Retooling the Existing Workforce to Practice in a Transformed Health System. *Academic Medicine* 88(12), December 2013. Published on-line ahead of print October 16, 2013.
- Fraser JG, Lloyd SW, Murphy RA, Crowson M, Zolotar AJ, Coker-Schwimmer E, & Viswanathan M. (2013). Child exposure to trauma: comparative effectiveness of interventions addressing maltreatment. Rockville, MD: Agency for Healthcare Research and Quality: Prepared by the RTI-UNC EPC under Contract No. 290-2007-10056-I.
- Gartlehner G, Forneris C, Brownley KA, Gaynes BN, Sonis J, Coker-Schwimmer E,...Lohr KN. (2013). Interventions to Prevent Post-traumatic Stress Disorder: A Systematic Review. *Am J Prev Med*, 44(6).
- Gaynes BN, Christian R, Saavedra LM, Wines R, Jonas DE, Viswanathan M, Ellis AR, Woodell C, Carey TS. (2014). Attention-deficit/hyperactivity disorder: Identifying high priority future research needs. *Journal of Psychiatric Practice*, 20(2), 104-117.
- Gaynes BN, Lloyd SW, Lux L, Gartlehner G, Hansen RA, Brode S, Jonas DE, Swinson Evans T, Viswanathan M, Lohr KN. Repetitive Transcranial Magnetic Stimulation for Treatment-Resistant Depression: A Systematic Review and Meta-Analysis. *J Clin Psychiatry* 2014; 75(5): 477-489. doi: 10.4088/JCP.13r08815.
- Geissler, K, GM Holmes, C Becker, SC Stearns, H Thirumurthy. "Exploring the association of homicides in northern Mexico and healthcare access for US residents." *Journal of Immigrant and Minority Health*, Published online 11 June 2014. DOI 10.1007/s10903-014-0053-4.
- Glasser M, Pathman DE. Co-Editors' Notes 27:1. *Education for Health* (online), April 2014; 27(1).
- Glasser M, Pathman DE. Co-Editors' Notes 26:3. *Education for Health* (online), December 2013; 26(3).
- Gozalo P, Prakash S, Qato DM, Sloane PD, Mor V. Effect of the Bathing Without a Battle Training Intervention on Bathing-Associated Physical and Verbal Outcomes in Nursing Home Residents with Dementia: A Randomized Crossover Diffusion Study. *Journal of the American Geriatrics Society*. 62:797-804, 2014. doi: 10.1111/jgs.12777.
- Gurschick L, Mayer DK, Hanson LC. (2014). Palliative Sedation: An analysis of international guidelines and position statements. *Am J Hospice Pall Med*, [Epub ahead of print].
- Hall LM, Gates M, Peterson J, Jones C, Pink G. Waiting and watching: Nurse migration trends before a change to the National Council Licensure Examination as entry to practice for Canada's nurses. *Nursing Outlook*. 2014;62(1):53-58.

- Halladay JR, DeWalt DA, Wise A, Qaqish B, Reiter K, Lee SY, Lefebvre A, Ward K, Mitchell CM, Donahue KE. More extensive implementation of the chronic care model is associated with better lipid control in diabetes. *J Am Board Fam Med.* 2014 Jan-Feb;27(1):34-41. doi: 10.3122/jabfm.2014.01.130070. PubMed PMID: 24390884; PubMed Central PMCID: PMC4096824.
- Halladay JR, Donahue KE, Hinderliter AL, Cummings DM, Cene CW, Miller CL, Garcia BA, Tillman J, DeWalt D; Heart Healthy Lenoir Research Team. The Heart Healthy Lenoir project—an intervention to reduce disparities in hypertension control: study protocol. *BMC Health Serv Res.* 2013 Oct 25;13:441. doi: 10.1186/1472-6963-13-441.
- Halpern MT, Viswanathan M, Evans TS, Birken SA, Basch E, & Mayer DK. (2014). Models of Cancer Survivorship Care: Overview and Summary of Current Evidence. *J Oncol Pract.* doi: 10.1200/jop.2014.001403
- Hanson LC, Bull J, Wessell K, Massie L, Bennett RE, Kutner J, Aziz N, Abernethy A. (2014). Strategies to support recruitment of patients with life-limiting illness for research: the Palliative Care Research Cooperative group. *J Pain Symptom Manage*, [Epub ahead of print].
- Hanson LC, Ersek M, Lin FC, & Carey TS. (2013). Outcomes of feeding problems in advanced dementia in a nursing home population. *Journal of the American Geriatrics Society*, 61(10), 1692-1697.
- Hanson LC, Green MA, Hayes M, Diehl SJ, Warnock S, Corbie-Smith G, Lin FC, Earp JA. (2013). Circles of Care: implementation and process evaluation of support teams for African-Americans with cancer. *Health Educ & Behavior*, 41(3), 291-298.
- Hanson LC, Winzelberg G. (2013). Research priorities in geriatric palliative care: goals, values and preferences. *J Pall Med*, 16(10), 1175-79.
- Harris, R. Screening Is Only Part of the Answer to Breast Cancer. *Ann Intern Med* 2014;160 (12):861-863.
- Harris R, Sheridan S. The times they (may) be a-changin': too much screening is a health problem. *Am J Prev Med* 2013;45(2):248-249. PMID: 23867035.
- Harris RP, Sheridan SL, Lewis CL, et al. The harms of screening: A proposed taxonomy and application to lung cancer screening. *JAMA Intern Med* 2014;174(2):281-285. PMID: 24322781
- Heerman W, Perrin E, Yin HS, Sanders L, Eden S, Shintani A, Coyne-Beasley T, Bronaugh AB, Barkin S, Rothman R. "Health Literacy and Injury Prevention Behaviors Among Caregivers of Infants," *American Journal of Preventive Medicine*, 2014 May; 46 (5): 449-56.
- Henderson GE, Edwards TP, Cadigan RJ, Davis AM, Zimmer C, Conlon C, Weiner BJ. Stewardship practices in US biobanks. *Sci Transl Med* 2013 Dec 11;5(215):215cm7. PMCID: PMC4185188
- Holmes GM. County-level estimates of the number of individuals in North Carolina who would be eligible for coverage under the Affordable Care Act's expanded insurance options. *North Carolina medical journal.* 2013;74(4):343-347.
- Holmes GM Regional variation in quality of health care across North Carolina's 100 counties. *N C Med J.* 2013 Jul-Aug;74(4):343-7.
- Holmes GM, Morrison M, Pathman DE, Fraher E. The contribution of 'plasticity' to modeling how a community's need for health care services can be met by different configurations of physicians. *Academic Medicine.* 2013 (December); 88(12):1-6. [Epub ahead of print].
- Howard K, Brenner A, Lewis S, Sheridan S, Crutchfield C, Hawley S, Nielsen ME, Pignone MP. A comparison of US and Australian men's values and preferences for PSA screening. *BMC Health Services Research BMC Health Serv Res.* 2013 Oct 5;13(1):388.
- Hunold KM, Esserman DA, Isaacs CG, Dickey RM, Pereira GF, Fillingim RB, Sloane PD, McLean SA, Platts-Mills TF. Side Effects from Oral Opioids in Older Adults during the First Week of Treatment for Acute Musculoskeletal Pain. *Academic Emergency Medicine.* 20(9):872-9, 2013. doi: 10.1111/acem.12212. Epub 2013 Aug 27. PubMed PMID: 24033733.
- Isler MR, Sutton K, Cadigan RJ, Corbie-Smith G. Community perceptions of genomic research: implications for addressing health disparities. *N C Med J.* 2013 Nov-Dec;74(6):470-6.

- Jackson LC, Hanson LC, Hayes M, Green MA, Peacock S, Corbie-Smith G. (2014). They lift my spirit up: stakeholders' perspectives of support teams for African-Americans facing serious illness. *Health Educ & Behavior*. [Epub ahead of print].
- Jacobs SJ, Weiner BJ, Bunger AC. Context matters: measuring implementation climate among individuals and groups. *Implement Sci*. 2014 Apr 17;9:46. PMID: 24742308
- Jonas DE, Amick HR, Feltner C, Bobashev G, Thomas K, Wines R, Kim MM, Shanahan E, Gass CE, Rowe CJ, Garbutt JC. Pharmacotherapy for Adults With Alcohol-Use Disorders in Outpatient Settings. *JAMA*, 2014;311(18): 1889-1900.
- Jonas DE, Evans JP, McLeod H, Brode S, Lange LA, Young ML, Shilliday BB, Bardsley MM, Swinton-Jenkins NJ, Week KE. Impact of Genotype-Guided Dosing on Anticoagulation Visits for Adults Starting Warfarin: A Randomized Controlled Trial. *Pharmacogenomics*. 2013 Oct;14(13): 1593-1603. DOI 10.2217/pgs.13.145.
- Jonas DE, Feltner C, Amick HR, Sheridan S, Zheng ZJ, Watford DJ,...Harris R. (2014). Screening for asymptomatic carotid artery stenosis: a systematic review and meta-analysis for the U.S. Preventive Services Task Force. *Ann Intern Med*, 161(5), 336-346. doi: 10.7326/M14-0530
- Jonas DE, Feltner C, & Garbutt JC. (2014). Medications for alcohol use disorders--reply. *JAMA*, 312(13), 1351. doi: 10.1001/jama.2014.10170
- Jonas DE, Garbutt JC, Amick HR, Brown JM, Brownley KA, Council CL,...Harris RP. (2012). Behavioral counseling after screening for alcohol misuse in primary care: a systematic review and meta-analysis for the U.S. Preventive Services Task Force. *Ann Intern Med*, 157(9), 645-654. doi: 1361859
- Jonas DE, Wilt TJ, Taylor BC, Wilkins TM, & Matchar DB. (2012). Chapter 11: challenges in and principles for conducting systematic reviews of genetic tests used as predictive indicators. *J Gen Intern Med*, 27 Suppl 1, S83-93. doi: 10.1007/s11606-011-1898-z
- Jonas DE, Wines RC. Pharmacogenomic Testing and the Prospect of Individualized Treatment. *N C Med J*. 2013;74(6):485-493. 0029-2559/2013/74605.
- Jones CD, Holmes GM, DeWalt DA, Erman B, Wu J, Cene CW, Baker DW, Schillinger D, Ruo B, Bibbins-Domingo K, et al. Self-reported recall and daily diary-recorded measures of weight monitoring adherence: Associations with heart failure-related hospitalization. *BMC Cardiovascular Disorders*. MC C;14.
- Jones CD, Holmes GM, Lewis SE, Thompson KW, Cykert S, DeWalt DA. Satisfaction with electronic health records is associated with job satisfaction among primary care physicians. *Informatics in Primary Care*. 2013;21(1):18-20.
- Kavalieratos D, Kamal AH, Abernethy AP, Biddle AK, Carey TS, Dev S,...Weinberger M. (2014). Comparing unmet needs between community-based palliative care patients with heart failure and patients with cancer. *Journal of Palliative Medicine*, 17(4), 475-481.
- Kavalieratos D, Mitchell EM, Carey TS, Dev S, Biddle AK, Reeve BB,...Weinberger M. (2014). "Not the 'grim reaper service'": An assessment of provider knowledge, attitudes, and perceptions regarding palliative care referral barriers in heart failure. *Journal of the American Heart Association*, 3(1).
- Khirsagar AV, Freburger JK, Ellis AR, Wang L, Winklemayer WC, Brookhart MA. Intravenous iron supplementation practices and short-term risk of cardiovascular events in hemodialysis patients. *PLoS one* 2013;8(11):e78930. Doi:10.1371/journal.pone.0078930
- Kistler, CE. Colorectal-cancer incidence and mortality after screening. *N Engl J Med*. 2013 Dec 12;369(24):2354. doi: 10.1056/NEJMc1313116#SA1. PMID: 24328472
- Ko LK, Reuland D, Jolles M, Clay R, & Pignone M. (2013). Cultural and Linguistic Adaptation of a Multimedia Colorectal Cancer Screening Decision Aid for Spanish-Speaking Latinos. *Journal of health communication*, (ahead-of-print), 1-18.
- Kranz, A, RG Rozier, JS Preisser, SC Stearns, M Weinberger, JY Lee. "Comparing Medical and Dental Providers of Oral Health Services on Early Dental Caries Experience." *American Journal of Public Health*, 104(7):e92-e99, July 2014.

- Kranz AM, RG Rozier, JS Preisser, SC Stearns, M Weinberger, JY Lee. "Examining continuity of care for Medicaid-enrolled children receiving oral health services in medical offices." *Maternal and Child Health Journal*, Published online May 7, 2014. DOI 10.1007/s10995-014-1510-3.
- Ku, LJ, SC Stearns, CH Van Houtven, SYD Lee, P Dilworth-Anderson, TR Konrad. "The Impact of Caring for Grandchildren on the Health of Grandparents in Taiwan." *Journal of Gerontology: Social Sciences*. DOI: 10.1093/geronb/gbt090. 68(6):1009-1021, 2013
- Latessa R, Colvin G, Beaty N, Steiner BD, Pathman DE. Satisfaction, motivation, and future of community preceptors: what are the current trends. *Academic Medicine*. 2013; 88(8):1164-70.
- Lathren CR, Sloane PD, Hoyle JD, Zimmerman S, Kaufer DI. Improving dementia diagnosis and management in primary care: a cohort study of the impact of a training and support program on physician competency, practice patterns, and community linkages. *BMC Geriatrics*. Dec 10;13(1):134, 2013. doi: 10.1186/1471-2318-13-134. PubMed PMID: 24325194; PubMed Central PMCID: PMC3878895.
- Lewis CL, Esserman D, DeLeon C, Pignone MP, Pathman DE, Golin C. Physician decision making for colorectal cancer screening in the elderly. *Journal of General Internal Medicine*. 2013 Sep;28(9):1202-7.
- McBeath B, Collins-Camargo C, Chuang E, Wells R, Bunger AC, & Jolles MP. (2014). New directions for research on the organizational and institutional context of child welfare agencies: Introduction to the symposium on "The Organizational and Managerial Context of Private Child Welfare Agencies". *Children and Youth Services Review*, 38(0), 83-92.
- McBeath B, Pérez Jolles M, Chuang E, Bunger A. (2014). Organizational Responsiveness to Children and Families: Findings from a National Survey of Nonprofit Child Welfare Agencies. *Children and Youth Service Review*, 38(0), 123-132.
- McCaffery KJ, Holmes Rovner M, Smith SK, Rovner D, Nutbeam D, Clayman M, Kelly-Blake K, Wolf MS, Sheridan SL. Addressing Health Literacy in Patient Decision Aids. *BMC Health Informatics and Decision Making* 2013, 13(Suppl 2):S10 doi:10.1186/1472-6947-13-S2-S10
- McGuire, F, Cykert, S, et al. (2014). Physicians' Attitudes about Recommending Surgery for Early Stage Lung Cancer and Possible Reasons for Racial Disparities. *Journal of HPRP*, 7(3), 50-80.
- Medical Imaging. *N C Med J*. March/April 2014;75(2):89-152.
- Menard JC, Hinds PS, Jacobs SS, Cranston K, Wang J, DeWalt DA, & Gross HE. (2014). Feasibility and Acceptability of the Patient-Reported Outcomes Measurement Information System Measures in Children and Adolescents in Active Cancer Treatment and Survivorship. *Cancer nursing*, 37(1), 66-74.
- Meyer AM, Reeder-Hayes K, Liu H, Wheeler SB, Penn D, Weiner B, Carpenter WR. Differential receipt of sentinel lymph node biopsy within practice-based research networks. *Med Care*. 2013 Sep;51(9):812-813. PMCID: PMC4080805.
- Mielenz TJ, Kubiak-Rizzone K, Alvarez AJ, Hlavacek P, Freburger JK, Giuliani C, Mercer V, Callahan LF. Association of self-efficacy and outcome expectations with physical activity in adults with arthritis. *Arthritis*; 2013:621396. Doi: 10.1155/2013/621396
- Moore K, Lewis C, Zimmerman S, Ward K., Reed D, Kistler CE, A Pilot Study to Examine Colorectal Cancer Screening in Two Assisted Living Communities. *Journal of the American Geriatrics Society*. 2014 Feb 12;62(2):386-388. doi: 10.1111/jgs.12665.
- Morrissey JP, Desmarais SL, & Domino ME. (2014). Outpatient commitment and its alternatives: Questions yet to be answered. *Psychiatric Services*, 65(6), 812-815.
- Neuwahl S, Ricketts TC, Holmes GM. 2014. The impact of general surgeon supply on the risk of appendiceal rupture in North Carolina. *Annals of Surgery*, 259(5):910-915.
- Nickel NC, Taylor EC, Labbok MH, Weiner BJ, Williamson NE. Applying organization theory to understand barriers and facilitators to the implementation of baby-friendly: a multisite qualitative study. *Midwifery*. 2013 Aug;29(8):956-64.
- Nikolova SK and SC Stearns. The Impact of CHIP Premium Increases on Insurance Outcomes among CHIP-Eligible Children. *BMC Health Services Research*. 14(1):1-13. DOI: 10.1186/1472-6963-14-101. March 2014.

- Odulana A, Kim MM, Green M, Taylor Y, Howard DL, Godley P, Corbie-Smith G. Participating in research: attitudes within the African American church. *J Relig Health*. 2014 Apr;53(2):373-81. doi: 10.1007/s10943-012-9637-2.
- Odulana AA., Kim MM., Isler MR, Green MA., Taylor, Y. J., Howard, D. L.,...Corbie-Smith, G. (2014). Examining characteristics of congregation members willing to attend health promotion in african american churches. *Health Promotion Practice*, 15(1), 125-133.
- Ogilvie GS, Smith LW, van Niekerk DJ, Khurshed F, Krajden M, Saraiya M, Goel V, Rimer BK, Greene SB, Hobbs S, Coldman AJ, Franco EL. Women's intentions to receive cervical cancer screening with primary human papillomavirus testing. *International Journal of Cancer*. Vol 15;133, No. 12 pp.2934-43. December 2013.
- Oreskovic NM, Goodman E, Robinson AI, Perrin EM, Perrin JM. "Adolescent report of lifestyle counseling," *Childhood Obesity*. 2014 Apr; 10(2):107-13.
- Parish SL, Thomas KC, Williams CS, Crossman M Autism and Families' Financial Burden: The Association with Health Insurance Coverage, *American Journal on Intellectual and Developmental Disabilities* (in press, accepted Feb 2014), 1-18.
- Pathman DE, Goldberg L, Konrad TR, Craft Morgan J. States' Loan Repayment and Direct Financial Incentive Programs. *Research Letter. JAMA*. 2014;310(18):1982-1984.
- Perrin EM, Holle A, Zerwas S, Skinner A, Reba-Harrelson L, Hamer R, Stoltenberg C, Torgerson L, Reichborn-Kjennerud T, Bulik C. "Weight-for-length trajectories in the first year of life in children of mothers with eating disorders in a large Norwegian cohort." *International Journal of Eating Disorders*, April 30, 2014, online ahead of print.
- Perrin E, Rothman R, Sanders L, Skinner A, Eden S, Shintani A, Throop E, Yin HS, "Racial and ethnic differences associated with feeding- and activity-related behaviors in infants." *Pediatrics*. 2014 Apr; 133(4):e857-67.
- Petit dit Dariel O, Waelli M, Ricketts TC. 2014. France's transition to academic nursing: the theory-practice gap. *Journal of Nursing Education and Practice*. Vol. 4 No. 10: 89-100 10.5430/jnep.v4n10p88.
- Patrick JL, Reeve BB, Kucharska-Newton AM, Foraker RE, Platz EA, Stearns SC, Han X, Windham BG, Irwin DE. (2014). Functional status declines among cancer survivors: Trajectory and contributing factors. *J Geriatr Oncol*. NIHMSID: 603472, 5:359-367
- Pilkonis PA, Yu L, Colditz J, Dodds N, Johnston KL, Maihofer C, & Stover A. (2013). Item Banks for Alcohol Use from the Patient-Reported Outcomes Measurement Information System (PROMIS®): Use, Consequences, and Expectancies. *Drug and Alcohol Dependence*, 130, 167-177. PMID: PMC3596476
- Pruchno R, Bishop CE, Saliba D, & Zimmerman S. (2014). Transforming Nursing Home Culture: Evidence for Practice and Policy. *The Gerontologist* 54 (Supplemental Issue I).
- Pruthi RS, Neuwahl S, Nielsen M, Fraher E. Recent Trends in the Urology Workforce. *Urology*. 2013; 82(5):987-994.
- Qaseem A, Humphrey LL, Harris R, Starkey M, Denberg TD. Screening pelvic examination in adult women: a clinical practice guideline from the American College of Physicians. *Ann Intern Med* 2014;161(1):67-72.
- Reeder-Hayes KE, J Freburger, J Feaganes, SP Hinton, LM Henderson, M Massing, AP Schenck, SC Stearns, WR Carpenter, C Chen, AH Khandani. "Comparative Effectiveness of Follow-up Imaging Approaches in Pancreatic Cancer." *Journal of Comparative Effectiveness Research*, 3(5):491-502, 2014.
- Reeve BB, & Stover AM. (2013). Introduction to Item Response Theory (IRT) and its Applications for Questionnaire Design and Evaluation in Behavioral Medicine. *Annals of Behavioral Medicine*, 45, s2.
- Reichenpfader U, Gartlehner G, Morgan LC, Greenblatt A, Nussbaumer B, Hansen RA, Van Noord M, Lux L, Gaynes, B. N. (2014). Sexual dysfunction associated with second-generation antidepressants in patients with major depressive disorder: Results from a systematic review with network meta-analysis. *Drug Safety*, 37(1), 19-31.

- Reiter KL, Halladay JR, Mitchell CM, Ward K, Lee SY, Steiner B, Donahue KE. Costs and benefits of transforming primary care practices: a qualitative study of North Carolina's Improving Performance in Practice. *J Healthc Manag.* 2014 Mar-Apr;59(2):95-108. PubMed PMID: 24783367.
- Reiter KL and PH Song. (2013). Hospital Capital Budgeting in an Era of Transformation. *Journal of Health Care Finance.* 39(3): 14-22.
- Respiratory Diseases in North Carolina. *N C Med J.* September/October 2013; 74(5):361-456.
- Reuland D, Pignone M; Improving the Quality of Decision-Making Processes for Prostate Cancer Screening: Progress and Challenges. *JAMA Intern Med.* 2013 Jul 29.
- Ricketts TC. 2013. How the Affordable Care Act will affect access to health care in North Carolina. *NCMJ: the North Carolina Medical Journal.* Vol 74, No. 4.
- Ricketts TC. 2013. The migration of physicians and the local supply of practitioners. *Academic Medicine,* 88(12): December 2013. Published on-line ahead of print October 16, 2013.
- Ricketts TC, Fraher EP. 2013. Reconfiguring health workforce policy so that education, training, and actual delivery are closely connected. *Health Affairs.* 32 (11): November 2013.
- Ringwalt C, Gugelman H, Garrettson M, Dasgupta N, Chung AE, Proescholdbell SK, Skinner AC. "Differential Prescribing of Opioid Analgesics by Physician Specialty for Medicaid Patients with Chronic Non-cancer Pain Diagnoses." *Pain Res Manag.* 2014 May 7. Pii: 15986.
- Roberts AW, Skinner AC. Assessing the present state and potential of Medicaid controlled substance lock-in programs. *J Manag Care Pharm.* 2014 May;20(5):439-446c.
- Roman Isler M, Eng E, Maman M, Adimora A, Weiner B. Public health and church-based constructions of HIV prevention: Black Baptist perspective. *Health Ed Res* 2014 Mar 17 [epub ahead of print].
- Runfola CD, Zucker NL, Von Holle A, Mazzeo S, Hodges E, Perrin EM, Bentley ME, Ulman TF, Hoffman ER, Forsberg S, Algars M, Zerwas S, Pisetsky EM, Taico C, Kuhns R, Hamer RM, Bulik CM. "NURTURE: Development and pilot testing of a novel parenting intervention for mothers with histories of an eating disorder." *International Journal of Eating Disorders.* 2014, Jan; 47(1):1-12.
- Salloum R, Kohler R, Jensen G, Sheridan S, Carpenter R, Biddle A. US Preventive Services Task Force Recommendations Among Female Beneficiaries. *Journal of Women's Health,* epub ahead of print, Nov 6, 2013.
- Sanders LM, Perrin EM, Yin HS, Bronaugh A, Rothman RL, and the Greenlight Study Team. "The GreenLight intervention study: randomized controlled trial of a low literacy, early childhood obesity prevention intervention." *Pediatrics,* 2014, Jun; 133(6):e1724-37
- Sautter JM, Tulskey JA, Johnson KS, Olsen MK, Burton-Chase AM, Lindquist JH, Zimmerman S, & Steinhauer KE. (2014). Caregiver experience during advanced chronic illness and last year of life. *Journal of the American Geriatrics Society,* 62(6), 1082-1090.
- Schenck AP, Rokoske FS, Durham D, Cagle JG, Hanson LC. (2014). Quality measures for hospice and palliative care: piloting the PEACE measures. *J Pall Med,* [Epub ahead of print].
- Shaw RJ, Kaufman MA, Bosworth HB, Weiner BJ, Zullig LL, Lee S-YD, Kravetz JD, Rakley SM, Roumie CL, Bowen ME, Del Monte PS, Oddone EZ, Jackson GL. Organizational factors associated with readiness to implement and translate a primary care based behavioral program to improve blood pressure. *Implement Sci.* 2013 Sep 8;8(1):106 PMID: PMC3847033.
- Shea CM, Jacobs SR, Esserman DA, Bruce K, Weiner BJ. Organizational readiness for implementing change: a psychometric assessment of a new measure. *Implement Sci.* 2014 Jan 10;9(1):7. PMID: PMC3904699.
- Shea CM, Malone R, Weinberger M, Reiter KL, Thornhill J, Lord J, Ngyuen NG, Weiner BJ. Assessing organizational capacity for achieving meaningful use of electronic health records. *Health Care Manage Rev.* 2014 Apr-Jun;39(2):124-33.

- Shea CM, Teal R, Haynes-Maslow LM, McIntyre MR, Weiner BJ, Wheeler SB, Jacobs SR, Mayer DK, Young MD, Shea TC. Assessing the feasibility of a virtual tumor board program: a case study. *J Healthc Manag.* 2014 May/Jun;59(3):177-193.
- Sheridan SL, Draeger LB, Pignone MP, Rimer B, Bangdiwala SI, Cai J, Gizlice Z, Keyserling TC, Simpson RS. The Effect of a Decision Aid Intervention on Decision Making About Coronary Heart Disease Risk Reduction: A Randomized Trial. *BMC Health Informatics and Decision Making* 2014; 14(1): 14.
- Sheridan SL, Draeger LB, Pignone MP, Sloane PD, Samuel-Hodge C, Finkelstein EA, Gizlice Z, Vu M, Gitterman DP, Bangdiwala SI, Donahue KE, Evenson K, Ammerman AS, Keyserling TC. Designing and Implementing a Comparative Effectiveness Study of Two Strategies for Delivering High Quality CHD Prevention: Methods and Participant Characteristics for the Heart to Health Study. *Contemporary Clinical Trials* 2013;36(2):394-405.
- Skinner AC, Hasty S, Turner R, Drebelis M, Lohr J. Is bigger really better? Obesity among high school football players, player position, and team success. (2013). *Clinical Pediatrics*, 52(10): 922-8. [PMID: 23819998]
- Sloane PD, Cohen LW, Haac Bryce E, Zimmerman S. Health care experiences of U.S. Retirees living in Mexico and Panama: a qualitative study. *BMC Health Services Research.* 2013, 13:411. DOI: 10.1186/10.1186/1472-6963-13-411. URL: <http://www.biomedcentral.com/1472-6963/13/411>.
- Sloane PD, Figueiro M, Garg S, Cohen LW, Reed DR, Williams CS, Preisser J, Zimmerman S. Effect of home-based light treatment on persons with dementia and their caregivers. *Lighting Research and Technology.* DOI: 10.1177/1477153513517255. 2014.
- Sloane PD, Kistler C, Mitchell CM, Beeber AS, Bertrand RM, Edwards AS, Olsho LEW, Hadden LS, Bateman JR, Zimmerman S. The Role of Body Temperature in Diagnosing Bacterial Infection in Nursing Home Residents. *J Am Geriatr Soc.* 2014;62(1):135-140.
- Sloane PD, Oudenhoven M, Broyles M, McNabney M. Challenges to Cost-Effective Primary Care Management of Complex Elderly Patients: Perspectives of PACE Medical Directors. *Journal of the American Geriatrics Society.* 62:564-565, 2014
- Sloane PD, Zimmerman S, Chen Xi, Barrick AL, Poole P, Reed D, Mitchell M, Cohen LW. Effect of a person-centered mouth care intervention on care processes and outcomes in three nursing homes. *Journal of the American Geriatrics Society.* 61:1158-1163, 2013.
- Smith SK, Samsa GP, Ganz PA, & Zimmerman S. (2014). Is there a relationship between posttraumatic stress and growth after a lymphoma diagnosis? *Psychooncology*, 23(3), 315-321.
- Song MK, Hanson LC, Gilet CA, Jo M, Reed TG, Hladik GA. (2014). Management of ethical issues related to care of seriously ill dialysis patients in free-standing facilities. *J Pain Symptom Manage*, 48(3), 343-52.
- Song PH, JS McCullough and KL Reiter. (2013). The Role of Non-Operating Income in Community Benefit Provision by Not-for-Profit Hospitals. *Journal of Health Care Finance.* 39(3): 59-70.
- Song PH, Reiter KL, Weiner BJ, Minasian L, McAlearney AS. The Business Case for Provider Participation in Clinical Trials Research: An Application to the National Cancer Institute's Community Clinical Oncology Program. *Health Care Manage Rev.* 2013 Oct/Dec;38(4):284-294. PMID: PMC3594627
- Stalls CM, Triplette MA, Viera AJ, Pathman DE, Cohen MG, Rossi JS. The association between body mass index and coronary artery disease severity: a comparison of Black and White patients. *American Heart Journal.* 2014;167(4):514-520.
- Stearns SC, S Sheingold, RB Zuckerman. "Explaining Variation in Hospice Visit Intensity for Routine Home Care." *Medical Care*, 52:56-62, January 2014.
- Stitzenberg K, Chang Y, Louie R, Groves JS, Durham D, Fraher E. Improving our understanding of the surgical oncology workforce. *Annals of Surgery*, 2014 Mar;259(3):556-62.
- Stover AM, Mayer DK, Muss H, Wheeler SB, Lyons J, & Reeve BB. (2014). Quality of life changes during the pre- to post-diagnosis period and treatment-related recovery time in older women with breast cancer. *Cancer*, 120, 1881-1889.

- Stover AM., Reeve BB, Muss H, Mayer DK, Wheeler S, & Lyons J. (2013). Are Health-Related Quality of Life Decrements after Breast Cancer Diagnosis Time-Limited for Women Ages 65 and Older?: A Matched Comparative Study of Medicare Beneficiaries. *Quality of Life Research*, 22 (Supplement 1), 80-81.
- Stover AM, Reeve BB, Piper B, Alfano C, Wilder Smith A, Mitchell S, Bernstein L, Baumgartner KB, McTiernan A, & Ballard-Barbash R. (2013). Deriving Clinically Meaningful Cut-scores for Fatigue in a Cohort of Breast Cancer Survivors: a Health, Eating, Activity, and Lifestyle (HEAL) Study. *Quality of Life Research*, 22, 2279-2292. PMID: 23420495, NIHMSID: 495491
- The Impact of Genetics on Medicine. *N C Med J*. November/December 2013; 74(6):457-552.
- Thomas KC, Hall JP, The Medicaid Medically Improved Group: Losing disability status and growing earnings, *Medicare & Medicaid Research Review*, 2014 4(1), E1–E14.
- Thomas KC, Parish SL, Williams CS, Healthcare expenditures for autism during times of school transition: Some vulnerable families fall behind, *Maternal and Child Health Journal* (epub ahead of print) 2014 Feb 20, E1–E9, PubMed PMID: 24553795
- Tran AN, Ornelas IJ, Kim M, Perez G, Green M, Lyn MJ, Corbie-Smith G. Results from a pilot promotora program to reduce depression and stress among immigrant latinas. *Health Promot Pract*. 2014 May;15(3):365-72. doi: 10.1177/1524839913511635.
- Tran AN, Ornelas IJ, Perez G, Green MA, Lyn M, Corbie-Smith G. Evaluation of Amigas Latinas Motivando el Alma (ALMA): a pilot promotora intervention focused on stress and coping among immigrant Latinas. *J Immigr Minor Health*. 2014 Apr;16(2):280-9. doi: 10.1007/s10903-012-9735-y. PMID: 23117693
- Ushering in a New Era in Health Care. *N C Med J*. July/August 2013;74(4):265-360.
- Varni JW, Magnus B, Stucky BD, Liu Y, Quinn H, Thissen D, Gross HE, Huang IC, & DeWalt DA. (2014). Psychometric properties of the PROMIS® pediatric scales: precision, stability, and comparison of different scoring and administration options. *Quality of Life Research*, 23(4), 1233-1243.
- Varni JW, Thissen D, Stucky BD, Liu Y, Magnus B, Quinn H, Irwin DE, DeWitt EM, Lai JS, Antmann D, Gross HE, & DeWalt DA. (2014). PROMIS® Parent Proxy Report Scales for children ages 5–7 years: an item response theory analysis of differential item functioning across age groups. *Quality of Life Research*, 23(1), 349-361.
- Viswanathan M, Carey TS, Belinson SE, Berliner E, Chang SM, Graham E,...White CM. (2014). A proposed approach may help systematic reviews retain needed expertise while minimizing bias from nonfinancial conflicts of interest. *Journal of Clinical Epidemiology*.
- Viswanathan M, Golin CE, Jones CD, Ashok M, Blalock SJ, Wines RC,...Lohr KN. (2012). Interventions to improve adherence to self-administered medications for chronic diseases in the United States: a systematic review. *Ann Intern Med*, 157(11), 785-795. doi: 10.7326/0003-4819-157-11-201212040-00538
- Washington T, Zimmerman S, Cagle J, Reed D, Cohen L, Beeber A, & Gwyther L. (2014). Fidelity decision-making in social and behavioral research: alternative measures of dose and other considerations. *Social Work Research*, 38(3), 154-162.
- Watson LC, Amick HR, Gaynes BN, Brownley KA, Thaker S, Viswanathan M, & Jonas DE. (2013). Practice-Based Interventions Addressing Concomitant Depression and Chronic Medical Conditions in the Primary Care Setting: A Systematic Review and Meta-analysis. *Journal of Primary Care and Community Health*, 4(4), 294-306.
- Welch WP, AE Cuellar, SC Stearns, AB Bindman. "Proportion of Physicians in Large Group Practices Continued to Grow in 2009-11." *Health Affairs* 32(9):1659-1666, September 2013. DOI: 10.1377/hlthaff.2012.1256
- Welch, WP, SC Stearns, AE Cuellar, AB Bindman. "Use of Hospitalists by Medicare Beneficiaries: A National Picture." *Medicare and Medicaid Research & Review*, 4(2), E1–E8, 2014.
- Wells R, Pérez Jolles M, Chuang E. (2014). Trends in Public Child Welfare Agency Management 1999 – 2009. *Children and Youth Service Review*, 38(0), 93-100.

- Whitaker, RG, KL Reiter, M Weinberger, and SC Stearns. (2013). Colorectal Cancer Surgery Outcomes for Vulnerable Patients in Safety-Net versus Non-Safety-Net Hospitals. *Journal of Health Care for the Poor and Underserved*. 24(2): 718-729.
- White AJ, Reeve B, Chen R, Stover AM, & Irwin DE. (2014). Coexistence of urinary incontinence and depressive symptoms with Health-Related Quality of Life in older Americans with and without cancer. *Journal of Cancer Survivorship*, 8, 497-507.
- White AJ, Reeve BB, Chen R, Stover AM, & Irwin D. (2013). Urinary incontinence and health-related quality of life among older Americans with and without cancer. *BMC Cancer* 13: 377. doi:10.1186/1471-2407-13-377
- White BL, Walsh J, Rayasam S, Pathman DE, Adimora AA, Golin CE. What makes me screen for HIV? Perceived barriers and facilitators to conducting recommended routine HIV testing among primary care physicians in the Southeastern United States. *Journal of the International Association of Providers of AIDS Care*. 2014 (March 18) Epub ahead of print.
- Wiley-Exley E, Domino ME, Ricketts TC, Cuddeback G, Burns BJ, Morrissey J. 2013 The impact of assertive community treatment on utilization of primary care and other inpatient health services: the North Carolina experience. *Journal of the American Psychiatric Nurses Association* July 19(4):195-204.
- Wu JR, DeWalt DA, Baker DW, Schillinger D, Ruo B, Bibbins-Domingo K, Macabasco-O'Connell A, Holmes GM, Broucksou KA, Erman B, Hawk V, Cene CW, Jones CD, Pignone M. A single-item self-report medication adherence question predicts hospitalisation and death in patients with heart failure. *J Clin Nurs*. 2014 Sep;23(17-18):2554-64. doi: 10.1111/jocn.12471. Epub 2013 Dec 20.
- Wu J, Holmes GM, DeWalt DA, Macabasco-O'Connell A, Bibbins-Domingo K, Ruo B, Baker DW, Schillinger D, Weinberger M, Broucksou K, Erman B, Jones CD, Cene CW, Pignone M. Low literacy is associated with increased risk of hospitalization and death among individuals with heart failure. *Journal of General Internal Medicine*. 2014;28(9):1174-1180.
- Yin HS, Sanders LM, Rothman RL, Shustak R, Eden SK, Shintani A, Cerra ME, Cruzatte EF, Perrin EM. "Parent health literacy and 'obesogenic' feeding and physical activity-related infant care behaviors," *Journal of Pediatrics*. 2014 Mar; 164(3):577-83.
- Zhong VW, Pfaff ER., Beavers DP, Thomas J, Jaacks LM, Bowlby DA, . . . Mayer-Davis EJ. (2014). Use of administrative and electronic health record data for development of automated algorithms for childhood diabetes case ascertainment and type classification: The SEARCH for diabetes in youth study. *Pediatric Diabetes*. doi: 10.1111/pedi.12152
- Zimmerman S, Anderson WL, Brode S, Jonas D, Lux L, Beeber AS, Watson LC, Viswanathan M, Lohr KN, Sloane PD. Systematic review: Effective characteristics of nursing homes and other residential long-term care settings for people with dementia. *Journal of the American Geriatrics Society*. 61:1399-1409, 2013.
- Zimmerman S, Cohen LW, Reed D, Gwyther LP, Washington T, Cagle JG, Beeber AS, Sloane PD. Comparing Families and Staff in Nursing Homes and Assisted Living: Implications for Social Work Practice. *J Gerontol Soc Work*. 56(6):535-53, 2013. doi: 10.1080/01634372.2013.811145. Epub 2013 Jul 22. PubMed PMID: 23869592;PubMed Central PMCID: PMC3772131.
- Zimmerman S, Cohen LW, Reed D, Gwyther LP, Washington T, Cagle JG, Sloane PD, & Preisser JS. (2013). Families matter in long-term care: results of a group randomized trial. *Seniors Housing & Care Journal*, 21(1), 3-20.
- Zimmerman S, Love K, Cohen LW, Pinkowitz J, & Nyrop KS. (2014). Person-centeredness in home and community-based services and supports: domains, attributes, and assisted living indicators. *Clinical Gerontologist*, 37, 429-445.
- Zimmerman S, Sloane PD, Bertrand R, Osho LE, Beeber A, Kistler C, Hadden L, Edwards A, Weber DJ, Mitchell CM. Successfully Reducing Antibiotic Prescribing in Nursing Homes. 2014 May; 62(5): 907-12. PMID: 24697789.
- Zimmerman S, Sloane PD, Cohen LW, Barrick AL. Changing the culture of mouth care: Mouth care without a battle. *The Gerontologist*, 54(S1), S25-S34, 2014. doi:10.1093/geront/gnt145.
- Zimmerman S, Sloane PD, & Reed D. (2014). Dementia prevalence and care in assisted living. *Health Affairs*, 33(4), 658-666.

Zullig LL, Vanderburg SB, Muiruri C, Abernethy A, Weiner BJ, Bartlett J, Oneko O, Lisasi E, Oresto M, Zafar SY. Sustainability of Cancer Registration in the Kilimanjaro Region of Tanzania - A Qualitative Assessment. *World Health Popul* 2014;15(1):21-30. PMID: PMC4114571.

Chapters, books, reports, etc:

2013 Child Health Report Card. North Carolina Institute of Medicine. Retrieved from http://riversdeveloper.com/wp-content/uploads/2013/12/2013_CHRC-121913hi.pdf

2013 Update to the Primary Care and Specialty Supply Task Force. North Carolina Institute of Medicine. Retrieved from <http://www.nciom.org/wp-content/uploads/2013/09/Provider-Supply-2013-Update.pdf>

Advances in the Prevention and Control of HAIs: Strategies to Reduce Potentially Inappropriate Antibiotic Prescribing in Assisted Living and Nursing Homes. June 2014. Agency for Healthcare Research and Quality, Rockville, MD. <http://www.ahrq.gov/professionals/quality-patient-safety/patient-safety-resources/resources/advances-in-hai/hai-article8.html>

Change in Profitability and Financial Distress of Critical Access Hospitals from Loss of Cost-Based Reimbursement. (December, 2013). Holmes GM and Pink G. FB112

Crews C, Reiter KL, Randolph, Holmes GM, Pink GH. Provision of Uncompensated Care by Rural Hospitals: A Preliminary Look at Medicare Cost Report Worksheet S-10. Aug 2013.

Discharge to Swing Bed or Skilled Nursing Facility: Who Goes Where? (February, 2014). Freeman V, Randolph R, Holmes GM. FB114

Feltner C, Jones CD, Cené CW, Zheng ZJ, Sueta CA, Coker-Schwimmer E, Arvanitis M, Lohr KN, Middleton JC, Jonas DE. Transitional Care Interventions To Prevent Readmissions for People With Heart Failure [Internet]. Rockville (MD): Agency for Healthcare Research and Quality (US); 2014 May.

Gapenski LC & Pink GH. *Cases in Healthcare Finance* 5th Edition, AUPHA/HAP, ISBN 13: 978-1-56793-611-7, 250 pages, 2014.

Garblehner G, Forneris C, Brownley KA, Gaynes BN, Sonis J, Coker-Schwimmer E,...Lohr KN. (2013). Interventions for the Prevention of Posttraumatic Stress Disorder (PTSD) in Adults After Exposure to Psychological Trauma. In A. f. H. R. a. Quality (Ed.). Rockville, MD: RTI International-University of North Carolina at Chapel Hill Evidence-based Practice Center under AHRQ Contract No. 290-2007-10056-I.

Geographic Variation in the Profitability of Critical Access Hospitals. (September, 2013). Pink G, Freeman V, Randolph R, Holmes GM. FB110

Ham R, Sloane PD, Warshaw G, Flaherty E, Potter J (eds). *Primary Care Geriatrics*, 6th Edition. Philadelphia: Elsevier, 2014.

Hanson LC, Schenck AP, Burstin H. *Measuring Quality of Care for Older Adults with Serious Illness*. Health Affairs invited blog post, January 22, 2014. <http://healthaffairs.org/blog/2014/01/22/measuring-quality-of-care-for-older-adults-with-serious-illness/>

Hanson LC, Schenck AP, Burstin H. "Quality and Outcome Measures," *Meeting the Needs of Older Adults with Serious Illness: Challenges and Opportunities in the Age of Health Care Reform*, Amy Kelley, Diane Meier, eds. Springer Publications, i2013.

Holmes GM, DeSimone JS, Rupp NG. Does School Choice Increase School Quality?: Evidence from North Carolina Charter Schools. *Advances in Microeconomics*, vol 14, Pages 131-155.

Implications for Beneficiary Travel Time if Financially-Vulnerable Critical Access Hospitals Close. (December, 2013). Freeman V, Randolph R, Pink G, Holmes GM. FB111

Jonas DE, Amick HR, Feltner C, Bobashev G, Thomas K, Wines R, Kim MM, Shanahan E, Gass CE, Rowe CJ, Garbutt JC. Pharmacotherapy for Adults With Alcohol-Use Disorders in Outpatient Settings. *Comparative Effectiveness Review* No. 134. (Prepared by the RTI International – University of North Carolina Evidence-based Practice Center under

- Contract No. 290-2012-00008-I.) AHRQ Publication No. 14-EHC029-EF. Rockville, MD: Agency for Healthcare Research and Quality; May 2014. www.effetehealthcare.ahrq.gov/reports/final.cfm.
- Jonas DE, Feltner C, Amick HR, Sheridan S, Zheng ZJ, Watford DJ,...Harris R. (2014). Screening for Asymptomatic Carotid Artery Stenosis: A Systematic Review and Meta-Analysis for the U.S. Preventive Services Task Force. (2014/07/25 ed.). Rockville, MD: Agency for Healthcare Research and Quality.
- Jonas DE, Garbutt JC, Brown JM, Amick HR, Brownley KA, Council CL,...Harris RP. (2012). Screening, Behavioral Counseling, and Referral in Primary Care to Reduce Alcohol Misuse. Comparative Effectiveness Review No. 75. Rockville, MD: Agency for Healthcare Research and Quality. Prepared by the RTI International–University of North Carolina Evidence-based Practice Center under Contract No. 290-2007-10056-I.) AHRQ Publication No. 12-EHC106-EF.
- Jonas DE, Wilkins TM, Bangdiwala S, Bann CM, Morgan LC, Thaler KJ,...Gartlehner G. (2013). Findings of Bayesian Mixed Treatment Comparison Meta-Analyses: Comparison and Exploration Using Real-World Trial Data and Simulation. doi: NBK126109 [bookaccession]
- McCormack L, Sheridan S, Lewis M, Boudewyns V, Melvin CL, Kistler C, Lux LJ, Cullen K, Lohr KN. Communication and dissemination strategies to facilitate the use of health-related evidence. *Evid Rep Technol Assess (Full Rep)*. 2013 Nov;(213):1-520. PMID: 24423078
- Medical Orders for Scope of Treatment: Implementation in North Carolina. (2013). North Carolina Institute of Medicine. Retrieved from http://www.nciom.org/wp-content/uploads/2013/11/Formatted_MOST_study_report_v_5_RefWorks-11_4_2013-2-Copy.pdf
- Meleth S, Reeder-Hayes K, Ashok M, Clark R, Funkhouser W, Wines C, Hill C, Shanahan E, Burson K, Coker-Schwimmer M, Garge N, McClure E, Jonas D. Technology Assessment of Molecular Pathology Testing for the Estimation of Prognosis for Common Cancers. Technology Assessment Project ID CANG0212. Rockville, MD: Agency for Healthcare Research and Quality, May 29, 2014.
- Munn J & Zimmerman S. (2014). Ethical issues associated with hospice in nursing homes and assisted living communities. In T. W. Kirk & B. Jennings (Eds). *Hospice Ethics: Policy and Practice in Palliative Care*. New York: Oxford University Press.
- Pathman DE & Glasser M. Co-Editors' Notes 26:2. *Education for Health* (online), October 2013; 26(2). Available from: http://www.educationforhealth.net/temp/EducHealth26269-5100137_141001.pdf
- Pathman DE, Glasser M, Bansal P, Baxi G. Tribute: Reviewers of *Education for Health*. *Education for Health* (online), December 2013; 26(3).
- Pathman DE & Konrad TR. NHSC Site Retention Needs Assessment Survey. Final Report prepared for DHHS/HRSA/BCRS/NHSC under subcontract to the National Rural Health Association. March 25, 2014.
- Profitability of Rural Hospitals. (August, 2013). Pink G, Freeman V, Randolph R, Holmes GM. FB109
- Promoting Healthy Weight for Young Children: A Blueprint for Preventing Early Childhood Obesity in North Carolina. (2013). North Carolina Institute of Medicine. Retrieved from http://www.nciom.org/wp-content/uploads/2013/09/ChildObesityRpt_090513.pdf
- Ricketts TC. 2013. Demand and Supply of Public Health Doctorates in North Carolina. Report to the University of North Carolina General Administration. September 10, 2013.
- Rojas Smith L, Ashok M, Morss Dy S, Wines R, & Teixeira-Poit S. (2014). Contextual Frameworks for Research on the Implementation of Complex System Interventions. Rockville, MD: Agency for Healthcare Research and Quality.
- Rural Hospital Mergers and Acquisitions: Who Is Being Acquired and What Happens Afterward? (August 2014) Noles, M., Reiter, K.L., H. Pink, G.H., Holmes, G.M. FB117
- Rural/Urban Differences in Inpatient Related Costs and Use Among Medicare Beneficiaries. (December, 2013). Toth M, Holmes GM, Freeman V, Pink G. FB113

- Safety Net Clinics Serving the Elderly in Rural Areas: Rural Health Clinic Patients Compared to Federally Qualified Health Center Patients. (May, 2014). Radford A, Freeman V, Kirk D, Howard A, Holmes GM. FB115
- Shaping Policy for a Healthier State for 30 Years: 30th Anniversary Report. (2013). North Carolina Institute of Medicine. Retrieved from http://www.nciom.org/wp-content/uploads/2013/09/NCIOM_30yrs_final.pdf
- Sloane PD, Warshaw GA, Potter JF, Flaherty E, Ham RJ. Principles of primary care of older adults. Primary Care Geriatrics, Fifth Edition. Chicago: Mosby-Yearbook; 2014.
- Viswanathan M, Ansari MT, Berkman N, Chang S, Hartling L, McPheeters M,...Treadwell JR. (2012). Assessing the Risk of Bias of Individual Studies in Systematic Reviews of Health Care Interventions Agency for Healthcare Research and Quality Methods Guide for Comparative Effectiveness Reviews (AHRQ Publication No. 12-EHC047-EF). Rockville, MD: Agency for Healthcare Research and Quality. Retrieved from Available at: www.effectivehealthcare.ahrq.gov/.
- Viswanathan M, Golin CE, Jones CD, Ashok M, Blalock S, Wines RC,...Lohr KN. (2012). Medication Adherence Interventions: Comparative Effectiveness. Evidence Report No. 208. *Closing the Quality Gap: Revisiting the State of the Science*. Rockville, MD: Agency for Healthcare Research and Quality: Prepared by RTI International–University of North Carolina Evidence-based Practice Center under Contract No. 290-2007-10056-I.
- Viswanathan M, Halpern M, Swinson Evans T, Birken D, Mayer D, & Basch E. (2014). Models of Cancer Survivorship Care. Rockville, MD: Agency for Healthcare Research and Quality.
- Watson LC, Amick HR, Gaynes BN, Brownley KA, Thaker S, Viswanathan M, & Jonas DE. (2012). Practice-Based Interventions Addressing Concomitant Depression and Chronic Medical Conditions in the Primary Care Setting. Comparative Effectiveness Review No. 75. Rockville, MD: Agency for Healthcare Research and Quality. Prepared by the RTI International–University of North Carolina Evidence-based Practice Center under Contract No. 290-2007-10056-I.) AHRQ Publication No. 12-EHC106-EF.
- Winzelberg G & Hanson LC. “Palliative Care in the Nursing Home,” Up To Date, September 2013. <http://www.uptodate.com/contents/palliative-care-nursing-home>
- Zimmerman S. (2013). Participatory research. In .M.D. Gellman & J.R. Turner (Eds). *Encyclopedia of Behavioral Medicine*. New York: Springer.
- Zimmerman S, Mitchell CM, Beeber AS, Kistler C, Reed D, Chisholm L, Bertrand R, & Sloane PD. (2014). Strategies to reduce potentially inappropriate antibiotic prescribing in assisted living and nursing homes. *Advances in the Prevention and Control of Healthcare-Associated Infections*. Rockville (MD): Agency for Healthcare Research and Quality (US). Available from: <http://www.ahrq.gov/professionals/quality-patient-safety/patient-safety-resources/resources/advances-in-hai/hai-article8.html>