

# The Nursing Workforce in North Carolina: Challenges and Opportunities

Erin Fraher, PhD MPP, Katie Gaul, MA & Erica Richman, PhD MSW  
 Program on Health Workforce Research & Policy  
 Cecil G. Sheps Center for Health Services Research, UNC-CH

Using Our Voice to Build Better Systems  
 Management & Labor Convening on Building a Skilled Workforce for Quality Healthcare  
 Washington, DC  
 July 9, 2015

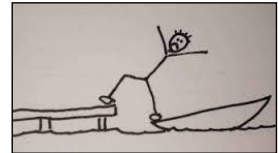
This work is supported in part with funding from the North Carolina AHEC Program, the Robert Wood Johnson Foundation and HRSA.



## Presentation Overview: In words and a picture

We will use North Carolina to frame challenges and opportunities regarding:

- Current nursing workforce
- “Education mobility” nurses — those who entered workforce with ADN and have gone on to BSN or higher
- Future nursing workforce in a transformed system



## Before we launch into the data, a brief introduction....The North Carolina Health Professions Data System (HPDS)

**Mission:** to provide timely, objective data and analysis to inform health workforce policy in North Carolina and the United States

- Cecil G. Sheps Center for Health Services Research at UNC-CH
- In collaboration with NC AHEC & professional licensing boards
- Independent of government and health care professionals; bringing rigor and objectivity
- 35 years of continuous licensure data on 19 health professions from 12 boards
- Data are provided voluntarily by the boards—there is no legislation that requires this, there is no appropriation



## Now let's dive into the data

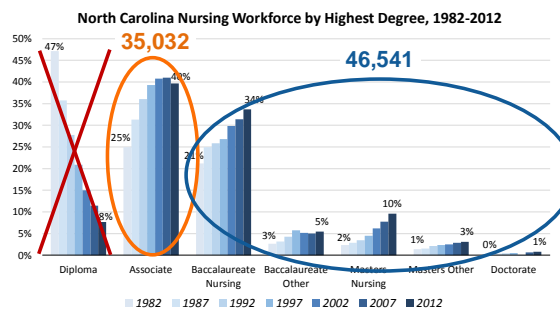


How do ADNs differ from BSN+ in NC?

Image from: <http://flashspace.pbworks.com/w/page/48788069/54121%20Norman%20Rockwell%20story>



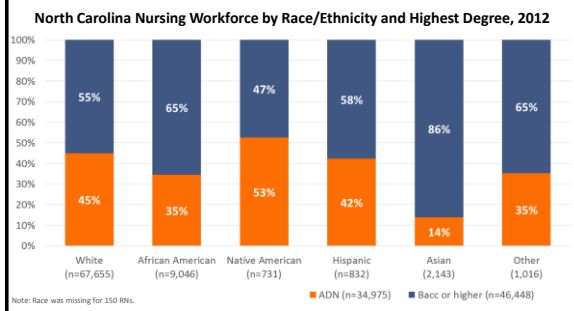
## Highest Degree of North Carolina Nursing Workforce: 1982-2012



Note: Data include RNs who were actively practicing in North Carolina as of October 31, 2012. Source: North Carolina Health Professions Data System, with data provided from the NC Board of Nursing. 2012. Produced by: Program on Health Workforce Research and Policy, Cecil G. Sheps Center for Health Services Research, UNC-CH.



## Asians, African Americans more likely to have baccalaureate or higher

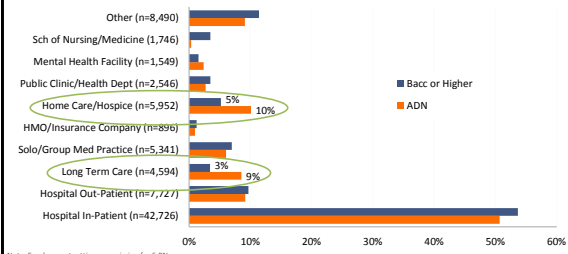


Note: Data include RNs who were actively practicing in North Carolina as of October 31, 2012. Source: North Carolina Health Professions Data System, with data provided from the NC Board of Nursing. 2012. Produced by: Program on Health Workforce Research and Policy, Cecil G. Sheps Center for Health Services Research, UNC-CH.



### Most nurses work in hospitals but ADN nurses more likely to work in home care/hospice and long-term care

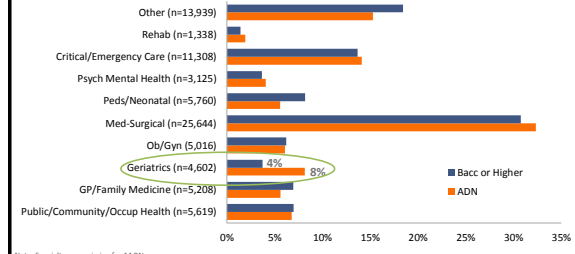
North Carolina Nursing Workforce by Employment Setting and Highest Degree, 2012



Note: Employment setting was missing for 6 RNs. Data include RNs who were actively practicing in North Carolina as of October 31, 2012. Source: North Carolina Health Professions Data System, with data provided from the NC Board of Nursing, 2012. Produced by Program on Health Workforce Research and Policy, Cecil G. Steg Center for Health Services Research, UNC-CH.

### Similar distributions by clinical practice area but ADN nurses more likely to work in geriatrics

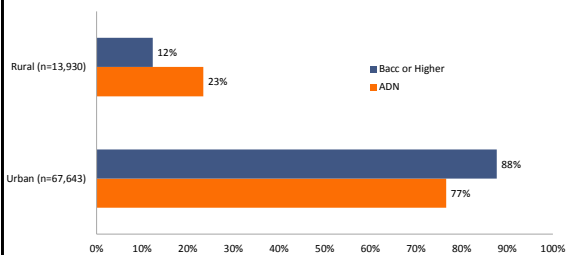
North Carolina Nursing Workforce by Clinical Practice Area and Highest Degree, 2012



Note: Specialty was missing for 14 RNs. Data include RNs who were actively practicing in North Carolina as of October 31, 2012. Source: North Carolina Health Professions Data System, with data provided from the NC Board of Nursing, 2012. Produced by Program on Health Workforce Research and Policy, Cecil G. Steg Center for Health Services Research, UNC-CH.

### ADN nurses nearly twice as likely to work in rural counties

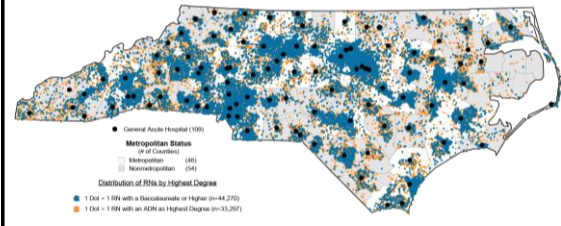
North Carolina Nursing Workforce by Rural Status and Highest Degree, 2012



Note: Data include RNs who were actively practicing in North Carolina as of October 31, 2012. Source: North Carolina Health Professions Data System, with data provided from the NC Board of Nursing, 2012. Produced by Program on Health Workforce Research and Policy, Cecil G. Steg Center for Health Services Research, UNC-CH.

### ADNs are better distributed across state while baccalaureate+ nurses cluster around hospitals

Distribution of ADNs and Baccalaureate or Higher RNs Actively Practicing in North Carolina in 2012

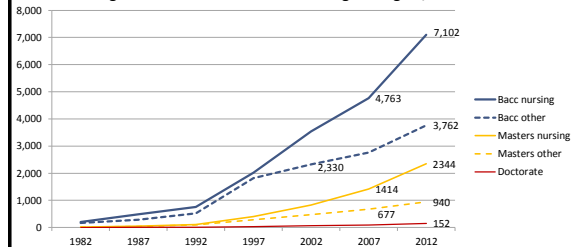


Note: Data are overlaid on county-level ZIP code areas. Data include RNs who were actively practicing in North Carolina who have an ADN as their highest degree or who have a BSN or higher as their highest degree. Data include 37 ADNs with no designated ZIP codes for mapping purposes. Source: North Carolina Health Professions Data System, with data derived from the North Carolina Board of Nursing, 2012. Hospital locations derived from NC (SHHS) as of January 1, 2013 at [http://www.ncshhs.gov/information/infopdfandnc114/member\\_hospital\\_list\\_of\\_hospitals.html](http://www.ncshhs.gov/information/infopdfandnc114/member_hospital_list_of_hospitals.html). Produced by Program on Health Workforce Research and Policy, Cecil G. Steg Center for Health Services Research, University of North Carolina at Chapel Hill.

### Do nurses who entered the workforce with an ADN and have a baccalaureate or higher degree in nursing behave more like ADNs or baccalaureate+ nurses?

### Number of nurses with ADN as entry degree and baccalaureate+ as highest degree has increased dramatically

Number of North Carolina Nurses Entering with ADN as Entry Degree Who Have Baccalaureate or Higher Degree, 1982-2012



Note: Missing data ranged from 0.0% in 1982 to 11.5% in 2007. Data include RNs who were actively practicing in North Carolina as of October 31, 2012. Source: North Carolina Health Professions Data System, with data provided from the NC Board of Nursing, 2012. Produced by Program on Health Workforce Research and Policy, Cecil G. Steg Center for Health Services Research, UNC-CH.

## What might our workforce look like if all ADN nurses went on to higher nursing education?

In 2012, 14,300 nurses had ADN for entry degree and baccalaureate or higher as highest degree:

- 9,516 nurses entered with ADN and have baccalaureate or higher **in nursing** as highest degree—the “education mobility” nurses
- 4,784 nurses entered with ADN and have baccalaureate or higher **outside nursing**—the “career mobility” nurses

Our analysis compares:

**34,058**  
ADN

**9,516**  
ADN to BSN+

**31,189**  
BSN+ at Entry

Potential Mobility: RNs who entered with ADN and still have ADN as highest degree

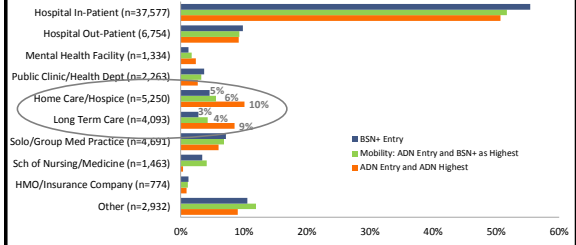
Mobility: Nurses who went on to pursue additional nursing education

Already BSN+: Nurses who entered with a BSN (or higher)



## Mobility nurses less likely to practice in home care/hospice and long-term care than ADN nurses without additional education

North Carolina Nursing Workforce by Employment Setting and Degree, 2012



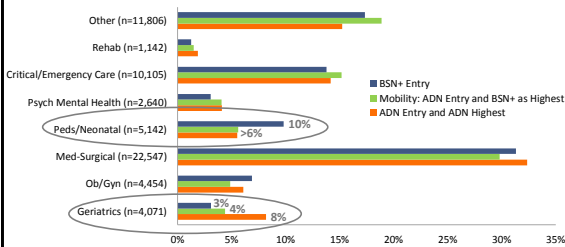
Note: Employment setting was missing for 3,420 RNs.

Note: Data include RNs who were actively practicing in North Carolina as of October 31, 2012. Source: North Carolina Health Professions Data System, with data derived from the NC Board of Nursing, 2012. Prepared by: Program on Health Workforce Research and Policy, Cecil G. Steg Center for Health Services Research, UNC-CH.



## Mobility nurses less likely to practice in geriatrics than ADN nurses without additional education. Nurses with BSN+ at entry more likely to practice in pediatrics

North Carolina Nursing Workforce by Practice Area and Degree, 2012



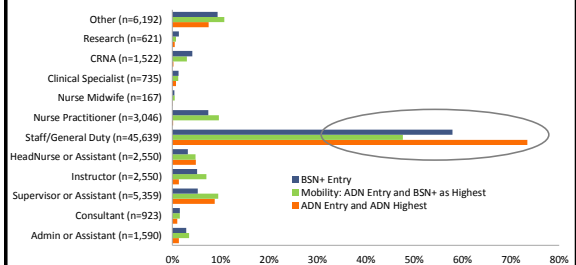
Note: Specialty was missing for 3,428 RNs.

Note: Data include RNs who were actively practicing in North Carolina as of October 31, 2012. Source: North Carolina Health Professions Data System, with data derived from the NC Board of Nursing, 2012. Prepared by: Program on Health Workforce Research and Policy, Cecil G. Steg Center for Health Services Research, UNC-CH.



## Mobility nurses less likely to practice as staff/general duty nurses

NC Nursing Workforce by Position Type and Degree, 2012



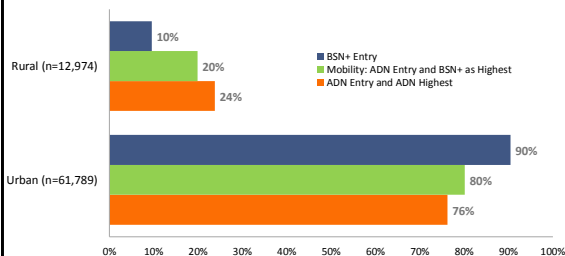
Note: Position type was missing for 3,417 RNs.

Note: Data include RNs who were actively practicing in North Carolina as of October 31, 2012. Source: North Carolina Health Professions Data System, with data derived from the NC Board of Nursing, 2012. Prepared by: Program on Health Workforce Research and Policy, Cecil G. Steg Center for Health Services Research, UNC-CH.



## Mobility nurses twice as likely as BSN+ nurses to practice in rural counties

North Carolina Nursing Workforce by Rural/Urban Setting and Degree, 2012



Rural source: US Census Bureau and Office of Management and Budget, March 2011, "Core Based Statistical Area" (CBSA) is the OMB's collective term for Metropolitan and Micropolitan Statistical areas. <http://www.census.gov/popest/data/totals/metroandnonmetro.html>

Note: Data include RNs who were actively practicing in North Carolina as of October 31, 2012. Source: North Carolina Health Professions Data System, with data derived from the NC Board of Nursing, 2012. Prepared by: Program on Health Workforce Research and Policy, Cecil G. Steg Center for Health Services Research, UNC-CH.



## So ... do mobility nurses behave more like ADNs or baccalaureate+ nurses? It depends

After seeking additional education, mobility nurses behave:

More like BSN+ nurses in terms of specialty and setting

- Less likely to practice in home care, hospice, long-term care and geriatrics

More like ADN nurses in terms of geographic dispersion.

Compared to BSN entry nurses:

- Twice as likely to practice in rural counties

Like neither group in terms of job title

- Less likely to be in staff/general duty positions





## The future nursing workforce: New roles in a transformed health system



### Let 1,000 flowers bloom: Ongoing experiments in health system transformation


- Growing number of patient centered medical homes, accountable care organizations and integrated delivery systems
- CMS actively funding demonstration projects
- Secretary Burwell recently announced 50% of Medicare payments tied to value by 2018

### New models of care: key characteristics

**Goal: provide patients with more comprehensive, accessible, coordinated and high quality care at lower costs**


- Payment based on value, not volume (accountability)
- Emphasis on primary, preventive and “upstream” care
- Care is coordinated between:
  - medical sub-specialties, home health agencies and nursing homes
  - health care system and community-based social services (social determinants of health)
- EHRs used to monitor patient & population health—increased use of data for risk-stratification and hot spotting
- Interventions focused on both patient- and population-level



### Nursing in a Transformed Health Care System: New Roles, New Rules


**“What will it take to optimize the contributions of nurses in these changing systems?”**

- *Redesign the nursing curriculum to impart new competencies;*
- *Retrain existing nurses to impart new skills and knowledge;*
- *Revamp licensing examination and requirements to reflect the new curriculum; and*
- *Restructure the state regulatory system to allow flexible deployment of the nurse workforce.”*



[http://di.upenn.edu/uploads/media\\_items/inqri-ldi-brief-nursing.original.pdf](http://di.upenn.edu/uploads/media_items/inqri-ldi-brief-nursing.original.pdf)


Citation: Fraher E, Spetz J, Naylor M. Nursing in a Transformed Health Care System: New Roles, New Rules. LD/NCM Research Brief. June 2015. [http://di.upenn.edu/uploads/media\\_items/inqri-ldi-brief-nursing.original.pdf](http://di.upenn.edu/uploads/media_items/inqri-ldi-brief-nursing.original.pdf)



### How do nurses fit in new models of care?

- PCMHs and ACOs emphasize care coordination, population health management, patient education, health coaching, data analytics, patient engagement, quality improvement, etc.
- Moving more toward ambulatory settings and community care
- New job titles and roles emerging
- “Boundary Spanners”
- Requires application of skills in new ways and development of new skills

Source: Bodenheimer T, Berry M, et al. Care management of patients with complex health care needs. Princeton, NJ: Robert Wood Johnson Foundation; 2008.



### New and evolving role areas

- Population health
- Complex older adults and family caregivers
- Care coordination and transitional care
- Use of data, evidence and other performance improvement skills
- Interprofessional collaboration



Source: Fraher E, Spetz J, Naylor M. Nursing in a Transformed Health Care System: New Roles, New Rules. LD/NCM Research Brief. June 2015.



## But how do we redesign structures to support these roles? → Education

- Must redesign education system so nurses can flexibly gain new skills and competencies
- Retrain and upgrade skills of the 2.9 million nurses *already* in the system – **they are the ones who will transform care**
- Training must be convenient – timing, location, & financial incentives
- Need to prepare faculty to teach new roles and functions
- Clinical rotations need to include “purposeful exposure” to high-performing teams and ambulatory settings

Source: Fraher E, Speltz J, Naylor M. Nursing in a Transformed Health Care System: New Roles, New Rules. *LD/INQRI Research Brief*. June 2015. Available at: <http://www.healthworkforce.unc.edu/unc/wp-content/uploads/2015/06/Research-Brief-2015-06-29.pdf>

## But how do we redesign structures to support these roles? → Regulation

### To create a more dynamic regulatory system, we need:

- To develop evidence to support regulatory changes, especially for new roles
- Better evaluation of pilot workforce interventions to understand if interventions improve health, lower costs and enhance satisfaction
- To establish a national clearinghouse to provide up-to-date and reliable information about scope of practice changes in other states
- Remove regulatory barriers to let nurses utilize skills to max benefit of patients

Source: Speltz J, Fraher E, Naylor M. It's Time to Retool Health Professions: Scope of Practice Regulations to Remove Barriers to Care. *Health Aff (Millwood)*. 2015;34(12):2111-2117. doi:10.1177/0278364215588888

## But how do we redesign structures to support these roles? → Policy

- **Insurance reimbursement rules**  
Current system creates inefficiencies and hinders nurses from delivering optimal services; Shift toward value-based care will likely support efforts to maximize nursing contributions to care
- **Regulation of entry-level nursing education**  
Modify state licensure board rules governing pre-licensure programs to ensure grads have new skills and competencies needed; adjust clinical training requirements to include more ambulatory experiences
- **NCLEX**  
Curricula designed to ensure graduates can pass NCLEX; If NCLEX changes to reflect new roles, curricula will change to keep up
- **Federal and state funding agencies**  
Funding can drive innovation and encourage transformation

Source: Fraher E, Speltz J, Naylor M. Nursing in a Transformed Health Care System: New Roles, New Rules. *LD/INQRI Research Brief*. June 2015.

## Who is going to pay for all this retooling we need to do? → Payment

- Adequate and sustainable payment models to retool and redeploy the workforce are lacking
- Many workforce innovations are supported by one-time funds. If payment models don't change rapidly enough, will these interventions be sustainable?
- 1,000 flowers are blooming but are adequate dollars available to conduct research and evaluations necessary to develop evidence base needed to support workforce redesign?

Source: Fraher E, Speltz J, Naylor M. Nursing in a Transformed Health Care System: New Roles, New Rules. *LD/INQRI Research Brief*. June 2015.

## Why the nursing workforce is critical to health system transformation

- With nearly 3 million nurses in active practice, nursing is **by far** largest licensed health profession (*about four times as many nurses as physicians*)
- Nursing care linked to quality and satisfaction measures that will increasingly be tied to value-based payments
- Nurses provide whole-person care across health and community-based settings
- Nurses are the ultimate “flexible” workforce taking on new roles in transformed health system

Source: Fraher E, Speltz J, Naylor M. Nursing in a Transformed Health Care System: New Roles, New Rules. *LD/INQRI Research Brief*. June 2015.

## Contact info

**Erin Fraher**  
erin\_fraher@unc.edu  
(919) 966-5012

**Erica Richman**  
elr@email.unc.edu  
(919) 966-7737

**Katie Gaul**  
k\_gaul@unc.edu  
(919) 966-6529

Program on Health Workforce Research and Policy  
<http://www.healthworkforce.unc.edu>



UNC  
www.unc.edu