



UNC

**THE CECIL G. SHEPS CENTER
FOR HEALTH SERVICES RESEARCH**

ANNUAL REPORT APPENDICES

July 1, 2014 - June 30, 2015

**The Cecil G. Sheps Center for Health Services Research
University of North Carolina at Chapel Hill**

725 Martin Luther King Jr. Blvd.
Chapel Hill, NC 27599-7590
<http://www.shepscenter.unc.edu>

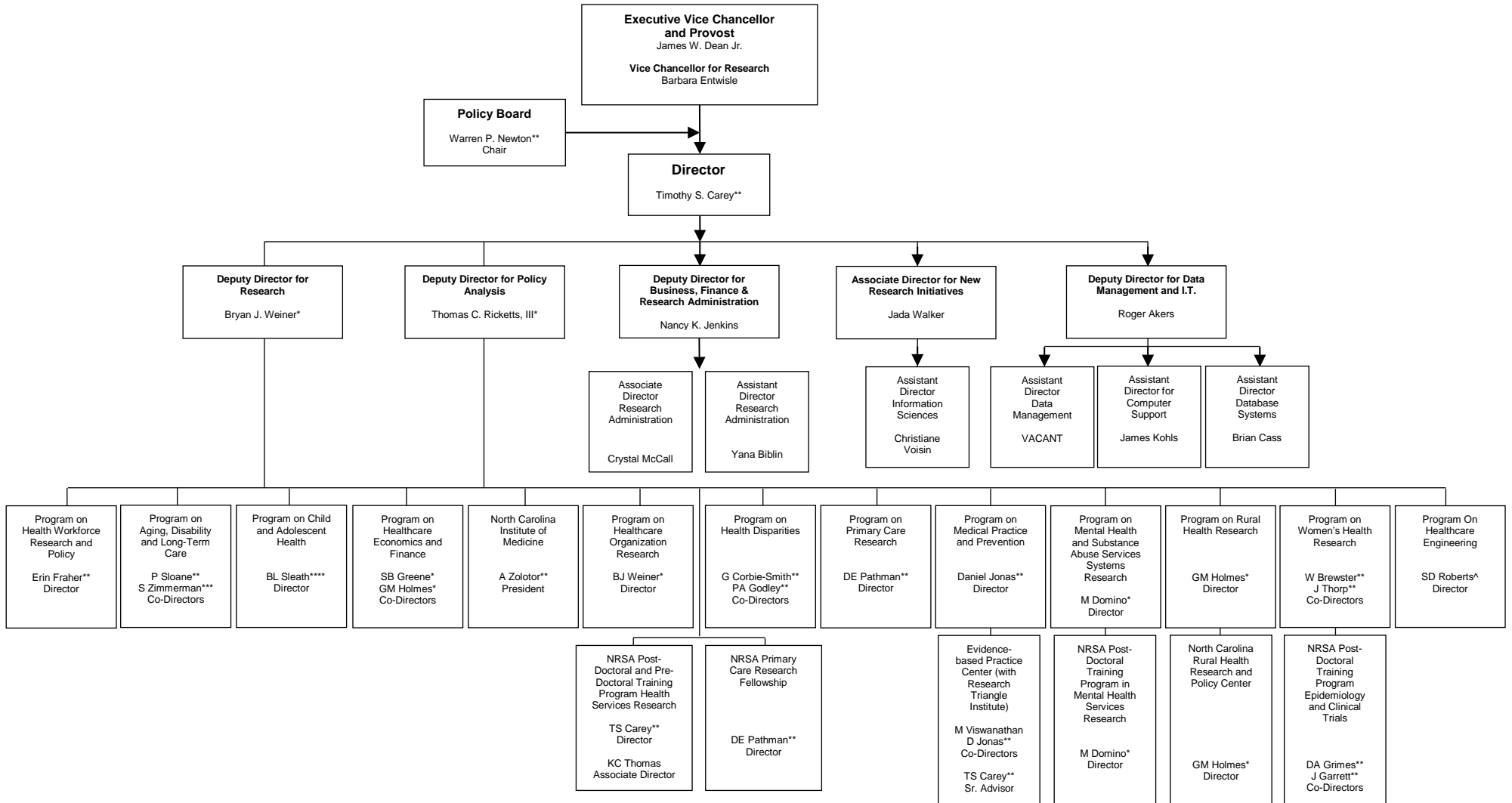
APPENDICES

Appendix A:	Organizational Chart
Appendix B:	Policy Board Members
Appendix C:	Contract and Grant Proposal Success
Appendix D:	Seminars
Appendix E:	Ethics Workshop
Appendix F:	DeFriese Lecture
Appendix G:	Publications

APPENDIX A

Organizational Chart
Cecil G. Sheps Center for Health Services Research
University of North Carolina at Chapel Hill

**Organizational Chart of the Cecil G. Sheps Center for Health Services Research
The University of North Carolina at Chapel Hill**



* Gillings School of Global public Health Faculty Appointment, UNC-CH
 ** School of Medicine Faculty Appointment, UNC-CH
 *** School of Social Work Faculty Appointment, UNC-CH
 **** School of Pharmacy Faculty Appointment, UNC-CH
 ^ Department of Industrial and Systems Engineering, NC State

APPENDIX B

POLICY BOARD MEMBERS

The Cecil G. Sheps Center for Health Services Research

2014-2015

The Cecil G. Sheps Center for Health Services Research is an organizational unit of the University's Division of Health Affairs and, as such, the Center's Director is responsible to the Vice Chancellor for Health Affairs. Oversight responsibility for the Center is vested in a Policy Board whose members include senior faculty and administrators from the five health science schools, as well as representatives of the health services community at large.

Thomas Bacon, PhD
Adjunct Professor
Dept of Social Medicine
School of Medicine

Tim Carey, MD, MPH
Professor of Medicine
Department of Medicine
Director, Cecil G. Sheps Center for Health Services
Research

Jo Ann Earp, ScD
Professor
Department of Health Behavior and Health Education
Gillings School of Global Public Health

Ronald J. Falk, MD
Professor and Division Chief
Division of Nephrology and Hypertension
School of Medicine

Sandra B. Greene, PhD
Professor and Chair
Department of Health Policy and Management
Gillings School of Global Public Health

Michael R. Kosorok, PhD, MM
Professor and Chair
Department of Biostatistics
Gillings School of Global Public Health

Jessica Y. Lee, DDS., MPH, PhD
Associate Professor
School of Dentistry

Barbara Mark, RN, PhD
Professor
School of Nursing

Warren P. Newton, MD, MPH (Chair)
Professor and Chair
Department of Family Medicine
School of Medicine
Director, Area Health Education Centers Program

Andrew F. Olshan, PhD
Professor and Chair
Department of Epidemiology
School of Public Health

Herbert B. Peterson, MD
Professor and Chair
Department of Maternal and Child Health
Gillings School of Global Public Health

David Rubinow, MD
Professor and Chair
Department of Psychiatry
School of Medicine

Marschall S. Runge, MD, PhD
Professor and Chair
Department of Medicine
School of Medicine

Betsy Sleath, PhD
Professor and Chair
Division of Pharmaceutical Policy
Eshelman School of Pharmacy

Alan D. Stiles, MD
Professor
Department of Pediatrics
School of Medicine

Hugh H. Tilson, MD, DrPH
Adjunct Professor
Public Health Leadership Program
Gillings School of Global Public Health

Sheps Center:
Roger Akers, Deputy Director, Data Mgt and I.T.
Nancy Jenkins, Deputy Director, Bus and Finance
Tom Ricketts, PhD, Deputy Director, Policy Analysis
Jada Walker, MA, Associate Director, Operations
Bryan Weiner, PhD, Deputy Director, Research

APPENDIX C

CONTRACT AND GRANT PROPOSAL SUCCESS

Tables 1.1 - 1.3 summarize the status of proposals submitted and new proposals, supplements/addenda, and resubmissions approved for funding for the 2014-15 fiscal year.

This fiscal year (2014-15), the majority of the proposals were initial submissions of new proposals (65), while 25 were requests for continuation funding for projects already funded, 6 were a request for supplemental funds, and 2 were resubmission of a proposal.

Table 1.1
SUMMARY OF PROPOSAL SUBMISSION AND SUCCESS
July 1, 2014 - June 30, 2015

Status	Initial Submissions	Supplements Addenda	Continuation Applications	Resubmissions	TOTAL
Total Proposals Submitted	72	6	25	2	105
Funding Notification Received:	59	6	21	2	97
Funded	31	6	24	2	63
Not Funded	32	0	2	0	34
No Decision	8	0	0	0	8
Proposals Withdrawn	2	0	0	0	2

* Verbal notification of funding received, pending official notification.

Table 1.2
SUMMARY OF FUNDING FOR NEW PROPOSALS, SUPPLEMENTS/ADDENDA,
AND RESUBMISSIONS APPROVED FOR FUNDING
Submitted July 1, 2014 - June 30, 2015 or Submitted in Previous Years

Status	Number	Percent Funded
<i>Submitted for Funding and received Notice:</i>		
Submitted This Year	97	
Submitted Previous Years	33	
Total	130	
<i>Funded (including verbal notification) of proposals with funding decision:</i>		
Submitted This Year	63	65 %
Submitted Previous Years	25	76 %
Total	88	73 %

Figure 1.1

SOURCES AND AMOUNTS OF SUPPORT BY FUNDING SOURCE AND YEAR
 (Excluding Indirect Dollars Not Coming To the Sheps Center
 and NC•IOM Dollars Not Coming Through the Sheps Center)
 2000-2015

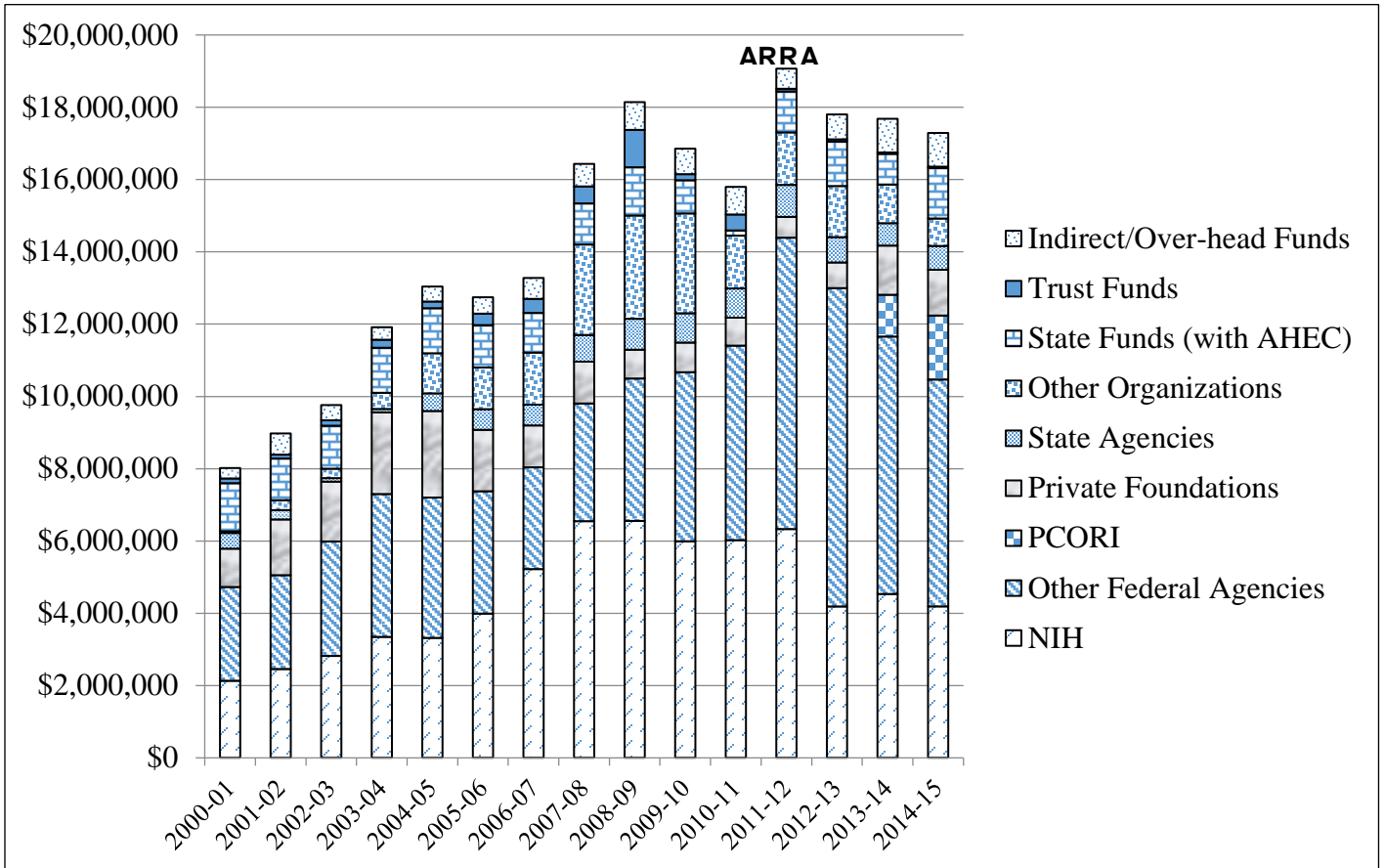


Table 1.3

**UPDATE ON NEW FUNDING
FY 14-15**

July 1, 2014 – June 30, 2015

Funding status reported for submissions of this Fiscal Year

(number of proposals)	Year One Award	Total Award
Funded (88)	\$21,097,918	\$47,433,494
Still Outstanding (9)*	\$1,773,222	\$4,464,083

* Includes 1 outstanding submission from FY13-14.

APPENDIX D

SEMINARS/WORKSHOPS

All seminars/workshops are open to the public and were planned and sponsored or co-sponsored through the Sheps Center during this past fiscal year. Unless otherwise noted, all seminars took place at the Sheps Center. The following is a description of the seminars:

AGENCY FOR HEALTHCARE RESEARCH AND QUALITY (AHRQ)/ NATIONAL RESEARCH SERVICE AWARD (NRSA) SEMINARS

Fall 2014 (The ACA – Four years on)

State priorities and challenges

Pam Silberman, J.D., Dr.P.H. (UNC-CH)

Health workforce issues

Erin Fraher, Ph.D. (UNC-CH)

Special populations

Kathleen Thomas, Ph.D. (UNC-CH)

Medicaid expenditures

Marisa Domino, Ph.D. (UNC-CH)

Pharmaceutical markets

Stacie Dusetzina, Ph.D. (UNC-CH)

Electronic health records

Sam Cykert, M.D. (UNC-CH)

Safety-net clinics

E. Benjamin Money, Jr., M.P.H. (North Carolina Community Health Center Association)

Brian Toomey (Piedmont Health Services, Inc)

ACOs

Paula Song, Ph.D. (UNC-CH)

Preventive care

Dan Reuland, M.D., M.P.H. (UNC-CH)

Rural hospital closures

Mark Holmes, Ph.D. (UNC-CH)

Spring 2015 (Career Development and Implementing HSR findings)

The money river and budgeting

Tim Carey, M.D., M.P.H. (UNC-CH)

Career development awards

Morris Weinberger, Ph.D. (UNC-CH)

Medicaid policy under the ACA

Genevieve Kenney, Ph.D. (The Urban Institute)

Implementing prevention research findings

Linda Kinsinger, M.D., M.P.H. (Veterans' Health Administration)

Rural hospital change

George Pink, Ph.D. (UNC-CH)

Physician change

Betsy Sleath, Ph.D. (UNC-CH)

Theoretical frameworks for studying change

Bryan Weiner, Ph.D. (UNC-CH)

Working in contract research organizations

Emily Elstad, Ph.D., M.P.H. (AIR)

Chris Beadles, M.D., Ph.D. (RTI)

Practice change

Sam Cykert, M.D. (UNC-CH)

**UNC-CH/DUKE PROGRAM IN MENTAL HEALTH SERVICES
& SYSTEMS RESEARCH SEMINAR SERIES**

The location of these seminars alternates between the Cecil G. Sheps Center for Health Services Research, University of North Carolina at Chapel Hill and the Department of Psychiatry and Behavioral Sciences, Duke University.

Fall 2014

What is mental illness and how should we train psychiatrists in the 21st century to treat it?

Gary Gala, M.D., F.A.C.S. (UNC-CH)

What is the evidence for evidence-based treatment of schizophrenia?

Scott Stroup, M.D., M.P.H. (Columbia University)

Financing mental health services: New models of care

Marisa Domino, Ph.D. (UNC-CH)

From the child guidance movement to evidence-based practice: evolution, revolution, or disaster?

Barbara Burns, Ph.D. (Duke University)

The Evolution of the Use of Indiana's Firearm Seizure Law in Indianapolis from 2007 to 2013

George Parker, M.D. (Indiana University)

Costs of screening and brief intervention for drug use in a primary care setting

Gary Zarkin, Ph.D. (RTI)

Spring 2015

Translating Research on Vulnerability and Protective Factors to Inform Mental Health Services for Children

Heather Pane, Ph.D. (Duke University)

Utilization and Adherence in Medical Homes: An Assessment of Rural-Urban Differences for People with Severe Mental Illness

Mona Kilany, Ph.D., M.S.P.H. (UNC-CH)

Do Medical Homes Offer Improved Diabetes Care for Medicaid Enrollees with Co-occurring Schizophrenia?

Bill Olesiuk, Ph.D. (UNC-CH)

SMI and Health Policy...A Broader Perspective for a Substance Abuse Researcher

Kelly Alanis-Hirsch, Ph.D. (Duke University)

Ethical and Legal Dimensions of Decision Making in the Context of Psychiatric Care

Dan Moseley, Ph.D. (UNC-CH)

Doing mental health services research with PCORI funding

Kathleen Thomas, Ph.D. (UNC-CH)

Mental Health, Financial Stability, and Reducing Homelessness in Military Veterans

Eric Elbogen, Ph.D. (UNC-CH)

Looking to the Future: Mental Health and Substance Abuse Use and Spending in 2020

Tami Mark, Ph.D., M.B.A. (Truven Health Analytics)

Preserving the Fighting Strength: Impaired Clinicians and the Role of Forensic Mental Health
Mehul Mankad, M.D. (Duke University)

RCTs with Persons with Severe Mental Illness in Criminal Justice and Community Mental Health Settings: Lessons from the Field
Gary Cuddeback, Ph.D. (UNC-CH)

DANUBE UNIVERSITY AT KREMS-RTI INTERNATIONAL-UNC AT CHAPEL HILL METHODS (DUK-RTI-UNC) SEMINAR SERIES FOR SYSTEMATIC REVIEWS AND META-ANALYSES

Fall 2014

Systematic Reviews of qualitative Studies
Isolde Sommer, Ph.D., M.P.H. (DUK)

Evaluating evidence on environmental health risks
Michael Kundi, Ph.D. (Medical University of Vienna)

Primer on meta-analysis of diagnostic accuracy studies
Thomas Trikalinos, M.D., Ph.D. and Issa J. Dahabreh, M.D., M.S. (Brown University)

Cochrane risk of bias tool for observational studies (ACROBAT-NRS)
Meera Viswanathan, Ph.D. (Brown University)

Publication indices
habil. Peter Baumgartner, Ph.D. (DUK)

Spring 2015

ADDIS
Gert van Valkenhoef, Ph.D. (University Medical Centre Groningen)

EPPI-Reviewer
Jeff Brunton, B.Sc., (Evidence for Policy and Practice Information and Co-ordinating Centre (EPPI-Centre))

Evidence to Decision Tables
Pablo Alonso Coello, M.D., Ph.D. (Sant Pau Biomedical Research Institute)

TRIANGLE HEALTH ECONOMICS WORKSHOP SERIES

Attendance is open to all interested persons. Regular attendees included faculty and doctoral students from UNC academic departments (Health Policy and Management, Economics, Public Policy, and Pharmaceutical Policy and Evaluative Sciences), Sheps Center fellows, faculty and students from Duke University departments (Economics, Public Policy, the Business School, and the Center for Health Policy and Law), Research Triangle Institute researchers, and, on occasion, faculty from North Carolina State University, East Carolina University, the University of North Carolina at Greensboro.

Fall 2014

Outsourcing and Ownership: Theory and Evidence from California General Care Hospitals
Christina Marsh Dalton, Ph.D. (Wake Forest)

Transparency and Prices: the Value of Information in Hospital-Supplier Bargaining
Matt Grennan, Ph.D. (Wharton)

Recessions, Healthy No More?
Christopher J. Ruhm, Ph.D. (University of Virginia)

The Impact of Consumer Inattention on Insurer Pricing in the Medicare Part D Program
Kate Ho, Ph.D. (Columbia University)

Synthetic control methods
Yuna Kim, Ph.D. and Christine Durrance, Ph.D. (UNC-CH)

Spring 2015

Hospital Network Competition and Adverse Selection: Evidence from the Massachusetts Health Insurance Exchange

Mark Shepard, Ph.D. (Harvard)

Genetic and Economic Interaction In The Formation of Human Capital. The Case of Obesity

Pietro Biroli, Ph.D. (University of Chicago)

Paying More for Less? Insurer Competition and Health Plan Generosity in the Medicare Advantage Program

Daria Pelech (Harvard)

How Do Managed Care Plans Reduce Healthcare Costs?

Jessica Van Parys, Ph.D. (Columbia)

Physician Peer Effects, Organization, and the “Disadoption” of Low-Value Services

Aditi Sen (Wharton)

Special Education Financing and ADHD Medications: A Bitter Pill to Swallow

Melinda Morrill, Ph.D. (NC State)

Organizational Structure & Physician Production Decisions

Julie Sakowski, Ph.D. (Rational Answer Consulting)

Advantageous Selection, Moral Hazard, and Insurer Sorting on Risk in the U.S. Auto Insurance Market

Frank Sloan, Ph.D. (Duke University)

The Effect of Health Insurance Subsidy on Mortality for Low Income Individuals

Martin Andersen, Ph.D., M.P.H. (UNC Greensboro)

MEDICATION ADHERENCE SEMINAR SERIES:

COMPARATIVE EFFECTIVENESS RESEARCH (CER) STRATEGIC INITIATIVE, NC TRACS

Brinkhous-Bullitt Building, 2nd Floor (Room #219), 160 N. Medical Drive, UNC

Summer 2014

Claims-Based Measures of Medication Adherence and Methodological Issues.

Stacie Dusetzina, Ph.D. (UNC-CH)

Joel Farley, Ph.D. (UNC-CH)

Methodological issues when using medication adherence as an exposure or covariate in CER

Jenny Lund, Ph.D., M.S.P.H. (UNC-CH)

Til Stürmer, M.D., Ph.D., M.P.H. (UNC-CH)

In addition, the Center frequently hosts state and national meetings on research and policy issues.

APPENDIX E

ETHICS WORKSHOP

ETHICS IN HEALTH SERVICES RESEARCH August 18, 2014, 1:00 pm – 5:00 pm DeFriese Conference Room, 1st Floor, Sheps Center	
<p>Prerequisite: Required human subjects training to be completed this summer (CITI web-based training on human subjects, CITI online course).</p>	
<p>Session I: Conflicts of Interest, Advocacy and Research</p>	
1:00 pm	Introduction of Faculty & Fellows
1:15 pm	<p>UNC-CH Policies & Procedures</p> <p><u>Reading:</u></p> <ol style="list-style-type: none"> (1) Responsible Conduct of Research. UNC-CH Office of the Vice Chancellor for Research & Graduate Studies (2) Recommendations on Regulatory Issues In Cluster Studies, USDHHS
1:30 pm	<p>Conflicts of Interest and Scientific Misconduct</p> <p><u>Readings:</u></p> <ol style="list-style-type: none"> (3) AcademyHealth’s Ethical Guidelines for Managing Conflicts of Interest in Health Services Research December 2004 (4) Erlinghaus S. <i>Responses of Medical Schools to Institutional Conflicts of Interest</i>. JAMA 2008; 299:665-71 (5) Rothman DJ. <i>Academic Medical Centers and Financial Conflicts of Interest</i>. JAMA 2008; 299:695-7 (6) Interlandi J. <i>An Unwelcome Discovery</i>. The New York Times. October 22, 2006
2:15 pm	<p>Advocacy & Research</p> <p><u>Readings:</u></p> <ol style="list-style-type: none"> (7) Brown CP, Propst SM, Woolley. <i>Report: Helping Researchers Make the Case for Science</i>, Science Communication 2004; 25(3):294-303 (8) Susan Dentzer, <i>From the Editor</i>, Health Affairs, 28, no.1 (2009):w87-w88 (9) Mahar, M. (2009, September 9). Getting the Facts Right: Regional Variations in Health Care and the Dartmouth Research. <i>Health Beat Blog</i>. http://www.healthbeatblog.com/2009/09/getting-the-facts-right-regional-variation-in-health-care-and-the-dartmouth-research.html.
3:00 pm	Break
<p>Session II: Publication and Authorship</p>	
3:15 pm	<p>Publication and Authorship Issues</p> <p><u>Readings:</u></p> <ol style="list-style-type: none"> (10) Wislar JS, Flanagan A, Fontanarosa PB, DeAngelis CD. <i>Honorary and ghost authorship in high impact biomedical journals: a cross sectional survey</i>. BMJ 2011, 343: d6128. (11) DeAngelis CD. <i>Impugning the Integrity of Medical Science</i>. JAMA 2008; 1833-5 (12) Fugh-Berman A. <i>The Corporate Coauthor</i>. JGIM. 2005;20:546-548 (13) Tierney WM, Gerrity MS. <i>Scientific Discourse, Corporate Ghostwriting, Journal Policy, and Public Trust</i>. Editorial. JGIM. 2005; 20(60):550-551 (14) International Committee of Medical Journal Editors, <i>Uniform requirements for manuscripts submitted to biomedical journals: Writing and editing for biomedical publication</i>, updated December 2013. (15) Singer, N. <i>Medical Papers by Ghostwriters Pushed Therapy</i>. The New York Times. August 5, 2009

DEFRIESE LECTURE

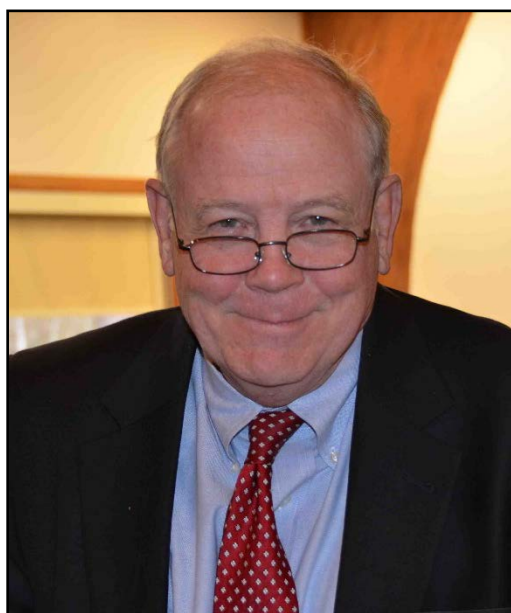
You are invited to attend the

2015 Gordon H. DeFrieese Lecture on Health Services Research

“So make me!...translating research into action”

Thomas C. Ricketts, III, PhD, MPH

Deputy Director for Policy Analysis, Cecil G. Sheps Center for Health Services Research
Professor, Health Policy & Management and Social Medicine
University of North Carolina at Chapel Hill



3:00 pm

Wednesday, April 1, 2015

The Carolina Club, George Watts Hill Alumni Center
Stadium Drive at Ridge Road

The University of North Carolina at Chapel Hill Campus

Reception to Follow

(Parking is available in the Rams Head Deck located next to the Carolina Club at a rate of \$1.50/hour)

APPENDIX G

PUBLICATIONS

This past year affiliated research staff working on Center-related projects published 212 articles, book chapters, or other reports. This included 129 articles in peer-reviewed journals, 83 other publications, including annual reports, briefs, data books, evidence reports, fact sheets, reviews, and presentations.

Peer-reviewed journals:

- Andrews AW, Li D, Freburger JK. Association of Rehabilitation Intensity for Stroke and Risk of Hospital Readmission. *Physical therapy*. 2015.
- Beadles CA, Ellis AR, Lichstein JC, et al. First outpatient follow-up after psychiatric hospitalization: does one size fit all? *Psychiatric services (Washington, D.C.)*. 2015;66(4):364-372.
- Beadles CA, Farley JF, Ellis AR, et al. Do medical homes increase medication adherence for persons with multiple chronic conditions? *Medical care*. 2015;53(2):168-176.
- Beadles CA, Meagher AD, Charles AG. Trends in emergent hernia repair in the United States. *JAMA surgery*. 2015;150(3):194-200.
- Beckham AJ, Urrutia RP, Sahadeo L, Corbie-Smith G, Nicholson W. “We Know but We Don’t Really Know”: Diet, Physical Activity and Cardiovascular Disease Prevention Knowledge and Beliefs Among Underserved Pregnant Women. *Maternal and child health journal*. 2015:1-11.
- Bowser J, Reed H, Fraher E. Commentaries on health services research. *Journal of the American Academy of Physician Assistants*. 2015;28(7):61-62.
- Brenner AT, Getrich CM, Pignone M, et al. Comparing the effect of a decision aid plus patient navigation with usual care on colorectal cancer screening completion in vulnerable populations: study protocol for a randomized controlled trial. *Trials*. 2014;15:275.
- Brookhart MA, Todd JV, Li X, Reams BD, Pate V, Kshirsagar AV. Estimation of biomarker distributions using laboratory data collected during routine delivery of medical care. *Annals of epidemiology*. 2014;24(10):754-761.
- Butler AM, Olshan AF, Kshirsagar AV, et al. Cancer incidence among US Medicare ESRD patients receiving hemodialysis, 1996-2009. *American journal of kidney diseases : the official journal of the National Kidney Foundation*. 2015;65(5):763-772.
- Cagle JG, Van Dussen DJ, Culler KL, et al. Knowledge About Hospice: Exploring Misconceptions, Attitudes, and Preferences for Care. *The American journal of hospice & palliative care*. 2014.
- Cagle JG, Zimmerman S, Cohen LW, Porter LS, Hanson LC, Reed D. EMPOWER: an intervention to address barriers to pain management in hospice. *Journal of pain and symptom management*. 2015;49(1):1-12.
- Carpenter DM, Lee C, Blalock SJ, et al. Using videos to teach children inhaler technique: a pilot randomized controlled trial. *Journal of Asthma*. 2014;52(1):81-87.
- Carpenter DM, Stover A, Slota C, et al. An evaluation of physicians' engagement of children with asthma in treatment-related discussions. *Journal of child health care : for professionals working with children in the hospital and community*. 2014;18(3):261-274.
- Carter JL, Coletti RJ, Harris RP. Quantifying and monitoring overdiagnosis in cancer screening: a systematic review of methods. *BMJ (Clinical research ed.)*. 2015;350:g7773.
- Casey MM, Moscovice I, Holmes GM, Pink GH, Hung P. Minimum-Distance Requirements Could Harm High-Performing Critical-Access Hospitals And Rural Communities. *Health Affairs*. 2015;34(4):627-635.
- Caster JM, Falchook AD, Hendrix LH, Chen RC. Risk of Pathologic Upgrading or Locally Advanced Disease in Early Prostate Cancer Patients Based on Biopsy Gleason Score and PSA: A Population-Based Study of Modern Patients. *International journal of radiation oncology, biology, physics*. 2015;92(2):244-251.
- Cene CW, Haymore LB, Lin FC, et al. Family member accompaniment to routine medical visits is associated with better self-care in heart failure patients. *Chronic illness*. 2015;11(1):21-32.
- Chen RC. Organ preservation-will data translate into reality for bladder cancer patients? *Clinical oncology (Royal College of Radiologists (Great Britain))*. 2015;27(3):133-135.

- Chen RC, Carpenter WR, Kim M, et al. Design of the North Carolina Prostate Cancer Comparative Effectiveness and Survivorship Study (NC ProCESS). *Journal of comparative effectiveness research*. 2015;4(1):3-9.
- Christian RB, Gaynes BN, Saavedra LM, et al. Use of antipsychotic medications in pediatric and young adult populations: future research needs. *Journal of psychiatric practice*. 2015;21(1):26-36.
- Chung AE, Skinner AC, Maslow GR, Halpern CT, Perrin EM. Sex differences in adult outcomes by changes in weight status from adolescence to adulthood: results from Add Health. *Academic pediatrics*. 2014;14(5):448-455.
- Cohen LW, Zimmerman S, Reed D, et al. Dementia in relation to family caregiver involvement and burden in long-term care. *Journal of Applied Gerontology*. 2014;33(5):522-540.
- Corbett SH, Cuddeback G, Lewis J, As-Sanie S, Zolnoun D. Trends in pharmacy compounding for women's health in North Carolina: focus on vulvodynia. *Southern medical journal*. 2014;107(7):433-436.
- Corbie-Smith G, Bryant AR, Walker DJ, et al. Building Capacity in Community-Based Participatory Research Partnerships Through a Focus on Process and Multiculturalism. *Progress in Community Health Partnerships: Research, Education, and Action*. 2015;9(2):261-273.
- Cox CE, Wysham NG, Walton B, et al. Development and usability testing of a Web-based decision aid for families of patients receiving prolonged mechanical ventilation. *Annals of intensive care*. 2015;5:6.
- Crisp GD, Roberts AW, Esserman DA, Roth MT, Weinberger M, Farley JF. The University of North Carolina's Health Care Pharmacy Assistance Program. *North Carolina medical journal*. 2014;75(5):303-309.
- Daaleman TP, Shea CM, Halladay J, Reed D. A method to determine the impact of patient-centered care interventions in primary care. *Patient education and counseling*. 2014;97(3):327-331.
- Dalton AF, Golin CE, Esserman D, Pignone MP, Pathman DE, Lewis CL. Relationship between Physicians' Uncertainty about Clinical Assessments and Patient-Centered Recommendations for Colorectal Cancer Screening in the Elderly. *Medical decision making : an international journal of the Society for Medical Decision Making*. 2015;35(4):458-466.
- DeWalt DA, Gross HE, Gipson DS, et al. PROMIS((R)) pediatric self-report scales distinguish subgroups of children within and across six common pediatric chronic health conditions. *Quality of life research : an international journal of quality of life aspects of treatment, care and rehabilitation*. 2015;24(9):2195-2208.
- Doan Q, Hall W, Shechter S, et al. Forecasting the effect of physician assistants in a pediatric ED. *JAAPA : official journal of the American Academy of Physician Assistants*. 2014;27(8):35-41.
- Domino ME, Wells R, Morrissey JP. Serving persons with severe mental illness in primary care-based medical homes. *Psychiatric services (Washington, D.C.)*. 2015;66(5):477-483.
- Duren-Winfield V, Onsomu EO, Case DL, Pignone M, Miller Jr D. Health Literacy and Computer-Assisted Instruction: Usability and Patient Preference. *Journal of health communication*. 2015;20(4):491-498.
- Dusetzina SB, Brookhart MA, Maciejewski ML. Control Outcomes and Exposures for Improving Internal Validity of Nonrandomized Studies. *Health services research*. 2015;50(5):1432-1451.
- Dusetzina SB, Ellis S, Freedman RA, et al. How Do Payers Respond to Regulatory Actions? The Case of Bevacizumab. *Journal of oncology practice / American Society of Clinical Oncology*. 2015;11(4):313-318.
- Dusetzina SB, Muluneh B, Khan T, Richards KL, Keating NL. Obstacles to affordable cancer treatments. *North Carolina medical journal*. 2014;75(4):257-260.
- Elstad EA, Sutkowi-Hemstreet A, Sheridan SL, et al. Clinicians' perceptions of the benefits and harms of prostate and colorectal cancer screening. *Medical decision making : an international journal of the Society for Medical Decision Making*. 2015;35(4):467-476.
- Falchok AD, Hendrix LH, Chen RC. Guideline-discordant use of imaging during work-up of newly diagnosed prostate cancer. *Journal of oncology practice / American Society of Clinical Oncology*. 2015;11(2):e239-246.
- Faurot KR, Jonsson Funk M, Pate V, et al. Using claims data to predict dependency in activities of daily living as a proxy for frailty. *Pharmacoepidemiology and drug safety*. 2015;24(1):59-66.
- Freburger JK, Ellis AR, Kshirsagar AV, Wang L, Brookhart MA. Comparative short-term safety of bolus versus maintenance iron dosing in hemodialysis patients: a replication study. *BMC nephrology*. 2014;15:154.
- Geissler KH, Holmes GM. Emergency Department Use in the US-Mexico Border Region and Violence in Mexico: Is There a Relationship? *The Journal of rural health : official journal of the American Rural Health Association and the National Rural Health Care Association*. 2015;31(3):316-325.

- Goode AP, Richardson WJ, Schectman RM, Carey TS. Complications, revision fusions, readmissions, and utilization over a 1-year period after bone morphogenetic protein use during primary cervical spine fusions. *The spine journal : official journal of the North American Spine Society*. 2014;14(9):2051-2059.
- Green MA, Lucas J, Hanson LC, et al. Carrying the burden: perspectives of African American pastors on peer support for people with cancer. *Journal of religion and health*. 2014;53(5):1382-1397.
- Green MA, Michaels M, Blakeney N, et al. Evaluating a Community-Partnered Cancer Clinical Trials Pilot Intervention with African American Communities. *Journal of Cancer Education*. 2015;30(1):158-166.
- Halladay JR, Vu M, Ripley-Moffitt C, Gupta SK, O'Meara C, Goldstein AO. Patient perspectives on tobacco use treatment in primary care. *Preventing chronic disease*. 2015;12:E14.
- Hanson LC. Where will palliative care go next? *Journal of palliative medicine*. 2014;17(9):980-981.
- Hanson LC, Bull J, Wessell K, et al. Strategies to support recruitment of patients with life-limiting illness for research: the Palliative Care Research Cooperative Group. *Journal of pain and symptom management*. 2014;48(6):1021-1030.
- Hanson LC, Schenck AP, Burstin H. Quality and Outcome Measures. Paper presented at: Meeting the Needs of Older Adults with Serious Illness 2014.
- Harris RP. Starting a new discussion about screening for lung cancer. *Jama*. 2015;313(7):717-718.
- Harris RP, Sheridan SL, Lewis CL. Real-world evidence about potential psychosocial harms of lung cancer screening--reply. *JAMA internal medicine*. 2014;174(8):1416-1417.
- Hoffman RM, Elmore JG, Fairfield KM, Gerstein BS, Levin CA, Pignone MP. Lack of shared decision making in cancer screening discussions: results from a national survey. *American journal of preventive medicine*. 2014;47(3):251-259.
- Holmes M. Financially fragile rural hospitals: mergers and closures. *North Carolina medical journal*. 2015;76(1):37-40.
- Howard K, Salkeld GP, Patel MI, Mann GJ, Pignone MP. Men's preferences and trade-offs for prostate cancer screening: a discrete choice experiment. *Health Expectations*. 2014.
- Hutchins R, Viera AJ, Sheridan SL, Pignone MP. Quantifying the utility of taking pills for cardiovascular prevention. *Circulation: Cardiovascular Quality and Outcomes*. 2015;8(2):155-163.
- Isler MR, Dave G, Jones HL, et al. The Spoken Word Project: Using Poetry in Community Dialogue and Mobilization for HIV Prevention. *Assessing Resilience*. 2015:25.
- Isler MR, Miles MS, Banks B, et al. Across the Miles: Process and Impacts of Collaboration with a Rural Community Advisory Board in HIV Research. *Progress in community health partnerships: research, education, and action*. 2015;9(1):41-48.
- Jackson LC, Hanson LC, Hayes M, Green M, Peacock S, Corbie-Smith G. They Lift My Spirit Up Stakeholders' Perspectives on Support Teams for African Americans Facing Serious Illness. *Health Education & Behavior*. 2014;41(6):599-604.
- Jacobs SR, Weiner BJ, Reeve BB, Hofmann DA, Christian M, Weinberger M. Determining the predictors of innovation implementation in healthcare: a quantitative analysis of implementation effectiveness. *BMC health services research*. 2015;15:6.
- Jacobs SR, Weiner BJ, Reeve BB, Weinberger M, Minasian LM, Good MJ. Organizational and physician factors associated with patient enrollment in cancer clinical trials. *Clinical trials (London, England)*. 2014;11(5):565-575.
- Joseph-Williams N, Newcombe R, Politi M, et al. Toward Minimum Standards for Certifying Patient Decision Aids A Modified Delphi Consensus Process. *Medical Decision Making*. 2014;34(6):699-710.
- Kamal AH, Hanson LC, Casarett DJ, et al. The quality imperative for palliative care. *Journal of pain and symptom management*. 2015;49(2):243-253.
- Karim S, Holmes G, Pink G. The Effect of Surgery on the Profitability of Rural Hospitals. *Journal of Health Care Finance*. 2015.
- Keyserling TC, Sheridan SL, Draeger LB, et al. A comparison of live counseling with a web-based lifestyle and medication intervention to reduce coronary heart disease risk: a randomized clinical trial. *JAMA internal medicine*. 2014;174(7):1144-1157.
- Kiechle ES, Bailey SC, Hedlund LA, Viera AJ, Sheridan SL. Different Measures, Different Outcomes? A Systematic Review of Performance-Based versus Self-Reported Measures of Health Literacy and Numeracy. *Journal of general internal medicine*. 2015;30(10):1538-1546.

- Kistler CE, Hess TM, Howard K, et al. Older adults' preferences for colorectal cancer-screening test attributes and test choice. *Patient preference and adherence*. 2015;9:1005-1016.
- Kutner JS, Blatchford PJ, Taylor DH, et al. Safety and benefit of discontinuing statin therapy in the setting of advanced, life-limiting illness: a randomized clinical trial. *JAMA internal medicine*. 2015;175(5):691-700.
- Lantz A, Holmer H, Finlayson S, et al. International migration of surgeons, anaesthesiologists, and obstetricians. *The Lancet. Global health*. 2015;3 Suppl 2:S11-12.
- Lee CN, Wetschler MH, Chang Y, et al. Measuring decision quality: psychometric evaluation of a new instrument for breast cancer chemotherapy. *BMC medical informatics and decision making*. 2014;14:73.
- Lee JY, Divaris K, DeWalt DA, et al. Caregivers' health literacy and gaps in children's Medicaid enrollment: findings from the Carolina Oral Health Literacy Study. *PloS one*. 2014;9(10):e110178.
- Lewis CL, Adams J, Tai-Seale M, et al. A Randomized Controlled Effectiveness Trial for PSA Screening Decision Support Interventions in Two Primary Care Settings. *Journal of general internal medicine*. 2015:1-7.
- Li X, Camelo Castillo W, Stürmer T, et al. Use of Combination Antihypertensive Therapy Initiation in Older Americans without Prevalent Cardiovascular Disease. *Journal of the American Geriatrics Society*. 2014;62(9):1729-1735.
- Lieberman HR, Marriott BP, Williams C, et al. Patterns of dietary supplement use among college students. *Clinical nutrition (Edinburgh, Scotland)*. 2015;34(5):976-985.
- Lightfoot AF, Taggart T, Woods-Jaeger BA, Riggins L, Jackson MR, Eng E. Where is the faith? Using a CBPR approach to propose adaptations to an evidence-based HIV prevention intervention for adolescents in African American faith settings. *Journal of religion and health*. 2014;53(4):1223-1235.
- Liu Y-J, Deal A, Pignone M, et al. Abstract P54: The Quality of Decisions about Breast Reconstruction. *Plastic and Reconstructive Surgery*. 2015;135(4):1236.
- Mayer D, Green M, Check D, et al. Is there a role for survivorship care plans in advanced cancer? *Supportive Care in Cancer*. 2015:1-6.
- Mercer VS, Freburger JK, Yin Z, Preisser JS. Recovery of paretic lower extremity loading ability and physical function in the first six months after stroke. *Archives of physical medicine and rehabilitation*. 2014;95(8):1547-1555.e1544.
- Mielenz TJ, Carey TS, Edwards MC. Item response theory analysis of the modified Roland-Morris Disability Questionnaire in a population-based study. *Spine*. 2015;40(6):E366-371.
- Mingo CA, Martin KR, Shreffler J, Schoster B, Callahan LF. Individual and community socioeconomic status: impact on mental health in individuals with arthritis. *Arthritis*. 2014;2014:256498.
- Neuwahl S. Reply to letter: "evidence does not support association between a greater supply of general surgeons and low rates of perforation in North Carolina". *Annals of surgery*. 2015;261(5):e132.
- Olesiuk WJ, Sweeney HA, Seiber EE, et al. A Comparison of Benefit Limits in Mental Health. *Administration and policy in mental health*. 2015.
- Patel M, Wang A, Kapphahn K, et al. Racial/Ethnic Variations in Lung Cancer Incidence and Mortality, Adjusted for Smoking Behavior: Results From the Women's Health Initiative. *International journal of radiation oncology, biology, physics*. 2014;5(90):S56.
- Pathman DE, Konrad TR, Hooker RS. Physician assistants and nurse practitioners in the National Health Service Corps. *JAAPA : official journal of the American Academy of Physician Assistants*. 2014;27(12):35-43.
- Perez G, Della Valle P, Paraghamian S, et al. A Community-Engaged Research Approach to Improve Mental Health Among Latina Immigrants ALMA Photovoice. *Health promotion practice*. 2015:1524839915593500.
- Petit dit Dariel O, Waelli M, Ricketts TC. France's transition to academic nursing: the theory-practice gap. *Journal of Nursing Education and Practice*. 2014;4(10):89-100.
- Pignone MP, Crutchfield TM, Brown PM, et al. Using a discrete choice experiment to inform the design of programs to promote colon cancer screening for vulnerable populations in North Carolina. *BMC health services research*. 2014;14(1):611.
- Platts-Mills TF, Flannigan SA, Bortsov AV, et al. Persistent pain among older adults discharged home from the emergency department after motor vehicle crash: a prospective cohort study. *Annals of emergency medicine*. 2015.

- Prince AE, Berg JS, Evans JP, Jonas DE, Henderson G. Genomic screening of the general adult population: key concepts for assessing net benefit with systematic evidence reviews. *Genetics in medicine : official journal of the American College of Medical Genetics*. 2015;17(6):441-443.
- Quinn H, Thissen D, Liu Y, et al. Using item response theory to enrich and expand the PROMIS(R) pediatric self report banks. *Health and quality of life outcomes*. 2014;12:160.
- Rauner T, Fannell J, Amundson M, Harrison JN, Sauer M, Pathman DE. Partnering Around Data to Address Clinician Retention in Loan Repayment Programs: The Multistate/NHSC Retention Collaborative. *The Journal of rural health : official journal of the American Rural Health Association and the National Rural Health Care Association*. 2015;31(3):231-234.
- Reiter KL, Lemos KA, Williams CE, Esposito D, Greene SB. The business case for pediatric asthma quality improvement in low-income populations: examining a provider-based pay-for-reporting intervention. *International journal for quality in health care : journal of the International Society for Quality in Health Care / ISQua*. 2015;27(3):189-195.
- Reyna VF, Nelson WL, Han PK, Pignone MP. Decision making and cancer. *American Psychologist*. 2015;70(2):105.
- Ritchwood TD, Albritton T, Akers AY, et al. The Effect of Teach One Reach One (TORO) on Youth Acceptance of Couple Violence. *Journal of Child and Family Studies*. 2015:1-11.
- Ritchwood TD, Penn D, Peasant C, Albritton T, Corbie-Smith G. Condom Use Self-Efficacy Among Younger Rural Adolescents The Influence of Parent-Teen Communication, and Knowledge of and Attitudes Toward Condoms. *The Journal of Early Adolescence*. 2015:0272431615599065.
- Roberts AW, Crisp GD, Esserman DA, Roth MT, Weinberger M, Farley JF. Patterns of medication adherence and health care utilization among patients with chronic disease who were enrolled in a pharmacy assistance program. *North Carolina medical journal*. 2014;75(5):310-318.
- Roberts MC, Dusetzina SB. Use and Costs for Tumor Gene Expression Profiling Panels in the Management of Breast Cancer From 2006 to 2012: Implications for Genomic Test Adoption Among Private Payers. *Journal of oncology practice / American Society of Clinical Oncology*. 2015;11(4):273-277.
- Rohweder CL, Laping JL, Diehl SJ, et al. Bridging Research, Practice, and Policy: The "Evidence Academy" Conference Model. *Journal of public health management and practice : JPHMP*. 2015.
- Royce TJ, Hendrix LH, Stokes WA, Allen IM, Chen RC. Cancer screening rates in individuals with different life expectancies. *JAMA internal medicine*. 2014;174(10):1558-1565.
- Santric-Milicevic MM, Terzic-Supic ZJ, Matejic BR, Vasic V, Ricketts TC, 3rd. First- and fifth-year medical students' intention for emigration and practice abroad: a case study of Serbia. *Health policy (Amsterdam, Netherlands)*. 2014;118(2):173-183.
- Schenck AP, Rokoske FS, Durham D, Cagle JG, Hanson LC. Quality measures for hospice and palliative care: Piloting the PEACE measures. *Journal of palliative medicine*. 2014;17(7):769-775.
- Sepucha KR, Feibelman S, Cosenza C, Levin CA, Pignone M. Development and evaluation of a new survey instrument to measure the quality of colorectal cancer screening decisions. *BMC medical informatics and decision making*. 2014;14(1):72.
- Shea CM, Reiter KL, Weaver MA, et al. Stage 1 of the meaningful use incentive program for electronic health records: a study of readiness for change in ambulatory practice settings in one integrated delivery system. *BMC medical informatics and decision making*. 2014;14:119.
- Sleath B, Blalock SJ, Carpenter DM, et al. Ophthalmologist-patient communication, self-efficacy, and glaucoma medication adherence. *Ophthalmology*. 2015;122(4):748-754.
- Sleath B, Sayner R, Blalock SJ, et al. Patient question-asking about glaucoma and glaucoma medications during videotaped medical visits. *Health communication*. 2015;30(7):660-668.
- Sloane PD, Figueiro M, Garg S, et al. Effect of home-based light treatment on persons with dementia and their caregivers. *Lighting research & technology (London, England : 2001)*. 2015;47(2):161-176.
- Sloane PD, Oudenhoven MD, Broyles I, McNabney M. Challenges to Cost-Effective Care of Older Adults with Multiple Chronic Conditions: Perspectives of PACE Medical Directors. *Journal of the American Geriatrics Society*. 2014;62(3):564.
- Sloane PD, Warshaw GA, Potter JF, Flaherty E, Ham RJ, Disengagement AV. Principles of Primary Care of Older Adults. *Ham's Primary Care Geriatrics: A Case-Based Approach*. 2014:3.

- Sloane PD, Zimmerman S, D'Souza MF. What will long-term care be like in 2040? *North Carolina medical journal*. 2014;75(5):326-330.
- Sloane PD, Zimmerman S, Reed D, et al. Antibiotic prescribing in 4 assisted-living communities: incidence and potential for improvement. *Infection Control and Hospital Epidemiology*. 2014;35(S3):S62-S68.
- Slota C, Sayner R, Vitko M, et al. Glaucoma patient expression of medication problems and nonadherence. *Optometry and vision science : official publication of the American Academy of Optometry*. 2015;92(5):537-543.
- Song L, Weaver MA, Chen RC, et al. Associations between patient-provider communication and socio-cultural factors in prostate cancer patients: a cross-sectional evaluation of racial differences. *Patient education and counseling*. 2014;97(3):339-346.
- Song M-K, Hanson LC, Gilet CA, Jo M, Reed TJ, Hladik GA. Management of Ethical Issues Related to Care of Seriously Ill Dialysis Patients in Free-Standing Facilities. *Journal of pain and symptom management*. 2014;48(3):343-352.
- Song M-K, Ward SE, Fine JP, et al. Advance Care Planning and End-of-Life Decision Making in Dialysis: A Randomized Controlled Trial Targeting Patients and Their Surrogates. *American Journal of Kidney Diseases*. 2015.
- Spector DJ, Noonan D, Mayer DK, Benecha H, Zimmerman S, Smith SK. Are lifestyle behavioral factors associated with health-related quality of life in long-term survivors of non-Hodgkin lymphoma? *Cancer*. 2015;121(18):3343-3351.
- Spetz J, Fraher E, Li Y, Bates T. How Many Nurse Practitioners Provide Primary Care? It Depends On How You Count Them. *Medical Care Research and Review*. 2015:1077558715579868.
- Spetz J, Fraher E, Li Y, Bates T. How Many Nurse Practitioners in Primary Care? It Depends on How You Count Them. *Medical Care Research and Review*. 2015;72(3):359-375.
- Stein GL, Guzman LE. Prevention and intervention research with Latino families: a translational approach. *Family process*. 2015;54(2):280-292.
- Sutkowi-Hemstreet A, Vu M, Harris R, Brewer NT, Dolor RJ, Sheridan SL. Adult Patients' Perspectives on the Benefits and Harms of Overused Screening Tests: a Qualitative Study. *Journal of general internal medicine*. 2015.
- Trantham LC, Carpenter WR, DiMartino LD, et al. Perceptions of cancer clinical research among African American men in North Carolina. *Journal of the National Medical Association*. 2015;107(1):33-41.
- van Buul LW, van der Steen JT, Achterberg WP, et al. Effect of tailored antibiotic stewardship programmes on the appropriateness of antibiotic prescribing in nursing homes. *The Journal of antimicrobial chemotherapy*. 2015;70(7):2153-2162.
- Viswanathan M, Carey TS, Belinson SE, et al. A proposed approach may help systematic reviews retain needed expertise while minimizing bias from nonfinancial conflicts of interest. *Journal of clinical epidemiology*. 2014;67(11):1229-1238.
- Viswanathan M, Kahwati LC, Golin CE, et al. Medication therapy management interventions in outpatient settings: a systematic review and meta-analysis. *JAMA internal medicine*. 2015;175(1):76-87.
- Wheeler SB, Basch E. Cancer care research in North Carolina: the state of the state. *North Carolina medical journal*. 2014;75(4):248-252.
- Wheeler SB, Kuo TM, Durham D, Frizzelle B, Reeder-Hayes K, Meyer AM. Effects of distance to care and rural or urban residence on receipt of radiation therapy among North Carolina Medicare enrollees with breast cancer. *North Carolina medical journal*. 2014;75(4):239-246.
- Wheeler SB, Kuo TM, Goyal RK, et al. Regional variation in colorectal cancer testing and geographic availability of care in a publicly insured population. *Health & place*. 2014;29:114-123.
- White BL, Walsh J, Rayasam S, Pathman DE, Adimora AA, Golin CE. What Makes Me Screen for HIV? Perceived Barriers and Facilitators to Conducting Recommended Routine HIV Testing among Primary Care Physicians in the Southeastern United States. *Journal of the International Association of Providers of AIDS Care*. 2015;14(2):127-135.
- Williams CD, Chan AT, Elman MR, et al. Aspirin Use Among Adults in the US: Results of a National Survey. *American journal of preventive medicine*. 2015;48(5):501-508.
- Wyss R, Ellis AR, Brookhart MA, et al. Matching on the disease risk score in comparative effectiveness research of new treatments. *Pharmacoepidemiology and drug safety*. 2015;24(9):951-961.
- Wyss R, Ellis AR, Lunt M, Brookhart MA, Glynn RJ, Sturmer T. Model Misspecification When Excluding Instrumental Variables From PS Models in Settings Where Instruments Modify the Effects of Covariates on Treatment. *Epidemiologic methods*. 2014;3(1):83-96.

Zimmerman S, Allen J, Cohen LW, et al. A measure of person-centered practices in assisted living: the PC-PAL. *Journal of the American Medical Directors Association*. 2015;16(2):132-137.

Zimmerman S, Cohen L, van der Steen JT, et al. Measuring end-of-life care and outcomes in residential care/assisted living and nursing homes. *Journal of pain and symptom management*. 2015;49(4):666-679.

Chapters, books, reports, presentations, etc:

“7 things for ASC leaders to know for Thursday.” Becker’s ASC Review. August 7, 2014. <http://www.beckersasc.com/asc-turnarounds-ideas-to-improve-performance/7-things-for-asc-leaders-to-know-for-thursday-august-7-2014.html>.

“Affordable Care Act Fails to Address Physician Shortages—Here’s How We Can Deal with This Challenge.” Forbes. October 21, 2014. <http://www.forbes.com/sites/physiciansfoundation/2014/10/21/affordable-care-act-fails-to-address-physician-shortages-heres-how-we-can-better-deal-with-this-challenge/>

“Charlotte faces larger doctor shortage than other areas across North Carolina.” Charlotte Business Journal. August 5, 2014. <http://www.bizjournals.com/charlotte/blog/health-care/2014/08/charlotte-faces-larger-doctor-shortage-than-other.html>.

“Jobs at risk as Mission eyes deep budget cuts.” Citizen-Times. July 29, 2014. <http://www.citizen-times.com/story/news/local/2014/07/29/jobs-risk-mission-eyes-deep-budget-cuts/13340991>.

“Modeling the future physician workforce.” Healthcare Finance News. July 30, 2014. <http://www.healthcarefinancenews.com/news/modeling-future-physician-workforce>.

“Modeling tool sheds insight on physician workforce needs.” FierceHealthIT. August 4, 2014. <http://www.fiercehealthit.com/story/modeling-tool-sheds-insight-physician-workforce-needs/2014-08-04>.

“NC Considers Whether It Could Train (And Retain) Its Own Optometrists.” WUNC 91.5 North Carolina Public Radio. August 7, 2014. <http://wunc.org/post/nc-considers-whether-it-could-train-and-retain-its-own-optometrists>.

“New physician shortage tool models physician shortages by area, specialty.” Becker’s Hospital Review. August 5, 2014. <http://www.beckershospitalreview.com/hospital-physician-relationships/new-physician-shortage-tool-models-physician-shortages-by-area-specialty.html>.

“Online Tool Predicts Physician Shortages at Local, National Levels.” iHealthBeat. August 1, 2014. <http://www.ihealthbeat.org/articles/2014/8/1/web-based-tool-predicts-physician-shortages-at-local-national-levels>.

“Raleigh faces larger doc shortage than Durham or Chapel Hill.” Triangle Business Journal. August 4, 2014. <http://www.bizjournals.com/triangle/blog/2014/08/raleigh-faces-larger-doc-shortage-than-durham-or.html>.

“Report: Growth In Two NC Regions May Bring A Doctor Shortage.” WUNC 91.5 North Carolina Public Radio. September 13, 2014. <http://wunc.org/post/report-growth-two-nc-regions-may-bring-doctor-shortage>.

“UNC develops tool to predict doctor shortages.” The Herald Sun. July 30, 2014. <http://www.heraldsun.com/news/localnews/x1071192249/UNC-develops-tool-to-predict-doctor-shortages>.

“UNC-CH researchers build online tool that predicts doctor shortages.” Modern Healthcare. July 31, 2014.

“UNC-CH researchers build online tool that predicts doctor shortages.” News & Observer. July 30, 2014. <http://www.newsobserver.com/2014/07/30/4037876/new-unc-chapel-hill-model-predicts.html>.

“What is the solution to addressing US physician shortages?” EHR Intelligence. July 30, 2014. <http://ehrintelligence.com/2014/07/30/what-is-the-solution-to-addressing-us-physician-shortages>.

A Comparison of Closed Rural Hospitals and Perceived Impact (April 2015) Thomas SR; Kaufman BG; Randolph RK; Thompson, KW; Perry JR; Pink GH. FB122.

A Critique of the Office of the Inspector General’s Report on Swing Beds in Critical Access Hospitals (March 2015) Reiter K and Holmes M.

Adamson W, Ricketts TC. “The Pediatric Workforce: Trends from the FutureDocs Web Forecasting Tool.” Presentation to the American Pediatric Surgeons Association Annual Meeting, Fort Lauderdale, FL. May 1, 2015.

Best Practices for Health Insurance Marketplace Outreach and Enrollment in Rural Areas (December 2014) Silberman, P; Thomas, S; Kaufman, B; Perry, J; and Holmes, M. FS01.

Brandt B, Fraher E. “How many doctors, nurses and other health professionals do you need? The impact of new delivery systems on your state’s health workforce needs.” Keynote presentation to the National Governors Association meeting on Learning from Each Other: How States Are Transforming Their Health Systems. Washington DC. April 22, 2015.

- Do Current Medicare Rural Hospital Payment Systems Align with Cost Determinants? (February 2015) Moss, K; Holmes, M; Pink G. FB120.
- Ellison A, Akers A, Black A, et al. HIV Prevention in a Rural Community: Project GRACE—A Multigenerational Approach to Community Engagement. *Innovations in HIV Prevention Research and Practice through Community Engagement*: Springer; 2014:11-33.
- Fraher E, Knapton A. “Swimming Upstream: A Workforce Model That Does Not Project a Physician Shortage in the United States.” Presentation at the International Health Workforce Conference, London, England, May 14, 2015.
- Fraher E, Morrison M. “Health Workforce Planning in a Rapidly Changing Health Care System” in Human Resources for Health: Managing for Success. Bruce Fried and Myron D. Fottler, eds. Health Administration Press 4th edition. (2014); 427-454.
- Fraher E, Richman E, Gaul K, “The Nursing Workforce: Challenges and Opportunities.” Presentation at the NC Board of Nursing Meeting. Raleigh, NC. March 26, 2015.
- Fraher E, Richman E, Gaul K, “The Nursing Workforce: Navigating Through Transformative Health System Change.” Presentation at the NC AHEC Nurses Council RIBN Journey Meeting. Raleigh, NC. March 17, 2015.
- Fraher E, Spero J. “Graduate Medical Education: What’s Going on in North Carolina and Other States?” Presentation at NC AHEC and NCHA Meeting. Cary, NC. February 18, 2015.
- Fraher E, Spetz J, Naylor M. (2015, June). Nursing in a Transformed Health Care System: New Roles, New Rules. LDI/INQRI Research Brief. Retrieved from <http://www.shepscenter.unc.edu/wp-content/uploads/2015/07/inqri-ldi-brief-nursing.original.pdf>
- Fraher E. “Using Workforce Data to Shape GME Policy.” Keynote presentation to the Graduate Medical Education Summit. Bozeman, MT. October 17, 2014.
- Fraher E. “FutureDocs Forecasting Tool: Applications to England.” Presentation to Health Education England. London, England. September 8, 2014.
- Fraher E. “FutureDocs Forecasting Tool: Applications to France.” Presentation to staff at Ministry of Health. Paris, France. September 9, 2014.
- Fraher E. “How can we transform the workforce to meet the needs of a transformed health system?” Vermont Health Care Workforce Symposium. Burlington, VT. November 10, 2014.
- Fraher E. “How can we transform the workforce to meet the needs of a transformed health system?” NC Foundation for Advanced Health Programs. Chapel Hill, NC. November 6, 2014.
- Fraher E. “Physician Shortages: What if we actually used data to shape GME policy?” A presentation to Medicare Payment Advisory Commission (MedPAC) senior staff. Washington DC. April 13, 2015.
- Fraher EP, Dall T, Dill M, Moore J. “Making sense of health workforce projections: Where we are now and where do we need to go?” Presentation at the Association of American Medical Colleges Workforce Conference. Alexandria, VA. April 30, 2015.
- Fraher EP, Machta R, Halladay J. “The workforce needed to staff value-based models of care.” Keynote Presentation to Congressional staffers at the National Health Policy Forum. Washington DC. February 20, 2015. <https://www.youtube.com/watch?v=GzRLM9E138A>
- Fraher EP. “A primer on the health workforce in the United States”. Keynote Presentation to Congressional staffers at the National Health Policy Forum. Washington DC. February 20, 2015. <https://www.youtube.com/watch?v=GzRLM9E138A>
- Gaul K, Fraher E. “The Health System is Transforming: Now What?” Ohio MEDTAPP Summit: Transforming Healthcare Through State-University Partnerships. Columbus, OH. September 23, 2014.
- Gaul K, Fraher E. “The World of Health Workforce Data, Analysis and Policy: National and State Perspectives.” Office of Mississippi Physician Workforce Strategic Planning Meeting. Jackson, MS. October 10, 2014.
- Gaul K, Fraher EP “State-Level Health Workforce Data Collection, Analysis, and Dissemination: An Introduction.” Health Workforce Technical Assistance Center. February 2015. http://www.healthworkforceta.org/wp-content/uploads/2015/03/TA_to_States_Resource_Brief.pdf
- Gaul K, Spero J, Fraher E, Minnotte M, Li Y. (2014). Trends in the nursing workforce in North Carolina [PowerPoint slides]. Retrieved from <http://www.shepscenter.unc.edu/wp-content/uploads/2015/04/Gaul-CharlotteAHEC-Nursing091014.pdf>

- Gaul K. "AHEC's Role in State Health Workforce Data Collection." Plenary panel presentation at the National AHEC Organization Conference. Charlotte, NC. July 9, 2014.
- Geographic Variation in Plan Uptake in the Federally Facilitated Marketplace (September 2014) Holmes, M.; Silberman, P; Thompson, K; Freeman, V; Randolph, R. FB118.
- Golden BA, Spero J, Fraher EP. "You can go home again: Understanding the long-term practice patterns of a cohort of University of North Carolina School of Medicine graduates." Poster at the Association of American Medical Colleges Workforce Conference. Alexandria, VA. April 30, 2015.
- How Does Medicaid Expansion Affect Insurance Coverage of Rural Populations? (July 2014) Thompson, K., Kaufman, B., and Holmes, M. FB116.
- Johnson A, Fraher EP, Morgan P. "Comparison of Specialty Distribution of Nurse Practitioners and Physician Assistants in North Carolina, 1997-2013." Poster at the AcademyHealth Annual Research Meeting. Minneapolis, MN. June 16, 2015.
- Knapton A, Fraher EP. "Using workforce data to drive Graduate Medical Education Investments" Presentation at the Association of American Medical Colleges Workforce Conference. Alexandria, VA. April 30, 2015.
- Location of Critical Access Hospitals. (April 2015). Cartographic. PDF File.
- Location of Critical Access Hospitals. (June 2015). Cartographic. PDF File.
- Machta R, Fraher EP, Halladay J. "The workforce transformations needed to staff value-based models of care." Poster at the AcademyHealth Annual Research Meeting. Minneapolis, MN. June 16, 2015.
- Minnotte M, Spero JC, Darter J, Terry J, Chantala K, Ricketts T, Gaul K, and Fraher EP. "North Carolina Health Professions 2013 Data Book." NC Health Professions Data System, Cecil G. Sheps Center for Health Services Research. April 2015. <http://www.shepscenter.unc.edu/wp-content/uploads/2015/05/2013-HPDS-DataBook.pdf>
- Morgan P, Johnson A, Fraher EP. "Comparison of Specialty Distribution of Nurse Practitioners and Physician Assistants in North Carolina, 1997-2013." Carolina Center for Health Workforce Analysis, Cecil G. Sheps Center for Health Services Research. March 2015. <http://www.shepscenter.unc.edu/wp-content/uploads/2015/04/DataBrief-PAsNPs-Morgan-Mar2015-FINAL.pdf>
- Narváez S, Spero J, Bacon T, Fraher EP. "Envisioning the Future Optometry Workforce in North Carolina: A Case Study of the Use of Health Workforce Data to Influence the Decision about Opening a New Optometry School." Presentation at the Association of American Medical Colleges Workforce Conference. Alexandria, VA. April 30, 2015.
- North Carolina Institute of Medicine. (2014, August). *North Carolina Rural Health Action Plan: A Report of the NCIOM Task Force on Rural Health*. Retrieved from <http://www.nciom.org/publications/?rural-health-action-plan>
- North Carolina Institute of Medicine. (2015, March). *2014 North Carolina Child Health Report Card*. Retrieved from <http://www.nciom.org/publications/?2014-child-health-report-card>
- North Carolina Institute of Medicine. (2015, March). *NCIOM Task Force on Essentials for Childhood: Safe, Stable, and Nurturing Relationships and Environments to Prevent Child Maltreatment*. Retrieved from <http://www.nciom.org/publications/?nciom-task-force-on-essentials-for-childhood-safe-stable-and-nurturing-relationships-and-environments-to-prevent-child-maltreatment>
- Parcours de Soins/Coordination of Care*. Presentation to the Regional Cancer Group (Canceropôle) of Ile de France. Paris, November 22, 2014.
- Pathman D, Holmes GM, Berchuck S, Terry J. (2015, April). Assessing shifts in outpatient visits to physicians of other specialties in rural areas with shortages of cardiologists and gastroenterologists: A preliminary analysis. Retrieved from <http://www.shepscenter.unc.edu/wp-content/uploads/2015/04/DataBrief-VisitShifting-Pathman-Apr2015.pdf>
- Richman E, Fraher E, Gaul K. "The North Carolina Mental Health and Substance Abuse Workforce." Presentation to the North Carolina Institute of Medicine. Morrisville, NC. June 5, 2015.
- Ricketts TC 2015. Diffusion of physician and access to primary care: The role of person program, and place. Health Workforce Research Brief. Chapel Hill, NC: Cecil G. Sheps Center for Health Services Research.
- Ricketts TC. "Building an Effective and Sustainable Health Care Workforce" in Oliver, T. (ed.) The CQ Guide to U.S. Health and Healthcare Policy. CQ Books (A Sage Imprint). September 2014.
- Ricketts TC. 2015 Medicare Payments to Address the Maldistribution of the Health Workforce. The Rural Monitor. July 30, 2015. <https://www.raonline.org/rural-monitor/medicare-at-50-thomas-ricketts/>
- Ricketts TC. 2015. Dr. Thomas Ricketts: Enough doctors for Medicaid expansion. *Raleigh News & Observer*, January 3, 2015. Editorial page. <http://www.newsobserver.com/opinion/letters-to-the-editor/article10210475.html>

- Ricketts TC. The Future of Pediatric Surgery. Presentation to the AAMC Health Workforce Research Conference, Alexandria, VA. April 30, 2015.
- Ricketts, TC. "So Make Me". 2015 Gordon H. DeFriese Lecture, University of North Carolina at Chapel Hill. Chapel Hill, NC April 1, 2015.
- Ricketts, TC. "Pediatric Surgeons, US Supply Trends Through 2030." Presentation to the APSA Task Force of Workforce, Elk Grove, IL, August 23, 2014.
- Ricketts, TC. 2015, "Public Health Policy and the Policymaking Process" in: Erwin PC and Brownson RC, eds. *Scutchfield and Keck's Principles of Public Health Practice*. 4th edition. Clifton Park, NY: Cengage Learning. In press, 2015.
- Ricketts, TC. Health Services Research and Public Health Research. Presentation at the *École des Hautes Études en Santé Publique*, September 14, 2015. Rennes, France.
- Ricketts, TC. Numbers and Workforce Policies. Keynote presentation for the UNC Dental School Research Day, Chapel Hill, NC, February 25, 2015.
- Ricketts, TC. Politics and Public Health (Closing Plenary). Third annual PHocus Conference. *Ecole des Hautes Etudes en Sante Publique*, Paris France, October 24, 2014.
- Ricketts, TC. Rural Poor, and Underserved. Faculty for 2014 NIMHD Translational Health Disparities Course. Bethesda, MD, August 18, 2014.
- Ricketts, TC. The Future of Medical Education. Visiting Faculty Presentation. University of Belgrade (Serbia) Medical School. June 29, 2014
- Ricketts, TC. Too Much Data. Presentation to the AAMC Health Workforce Research Conference, Alexandria, VA. April 30, 2015.
- Rural Hospital Mergers and Acquisitions: Who Is Being Acquired and What Happens Afterward? (August 2014) Noles, M., Reiter, K.L., H. Pink, G.H., Holmes, G.M. FB117.
- Rural Provider Perceptions of the ACA: Case Studies in Four States (February 2015) Kaufman, B; Silberman, P; Holmes, M. FB121.
- Rural-Urban Differences in Continuity of Care among Medicare Beneficiaries (December 2014) Toth, M; Quach, C; and Holmes, M. FB119.
- Spero J, Del Grosso C, Fraher E. "Pharmacy Workforce Trends in North Carolina." National AHEC Organization Conference. Charlotte, NC. July 10, 2014.
- Spero J, Gaul K, Fraher E, Minnote M, Li Y. "Trends in the Nursing Workforce in North Carolina." Charlotte AHEC Regional Nursing Deans and Directors Meeting. Charlotte, NC. September 11, 2014.
- Spero J, Gaul K, Fraher E. (2014). Trends in the supply and distribution of the health workforce in Area L and beyond [PowerPoint slides]. Retrieved from <http://www.shepscenter.unc.edu/wp-content/uploads/2015/04/Spero-AreaL-7August2014-FINAL.pdf>
- Spero J, Gaul K, Fraher E. "Trends in the Supply and Distribution of the Health Workforce in Area L and Beyond." Area L Turning Point Regional Meeting. Rocky Mount, NC. August 7, 2014.
- Spero JC, Narváez S, Bacon T, Fraher EP. "Envisioning the Future Optometry Workforce in North Carolina." Program on Health Workforce Research and Policy, Cecil G. Sheps Center for Health Services Research. March 2015. www.shepscenter.unc.edu/wp-content/uploads/2015/04/NC-OptometryRpt-March2015.pdf
- The 21st Century Rural Hospital: A Chart Book (March 2015) Freeman, V; Thompson, K; Howard, HA; Randolph, R; Holmes, M.
- The Future Demographics of General Surgeons. Panel presentation at the American College of Surgeons Clinical Congress, San Francisco, CA, October 29, 2014.