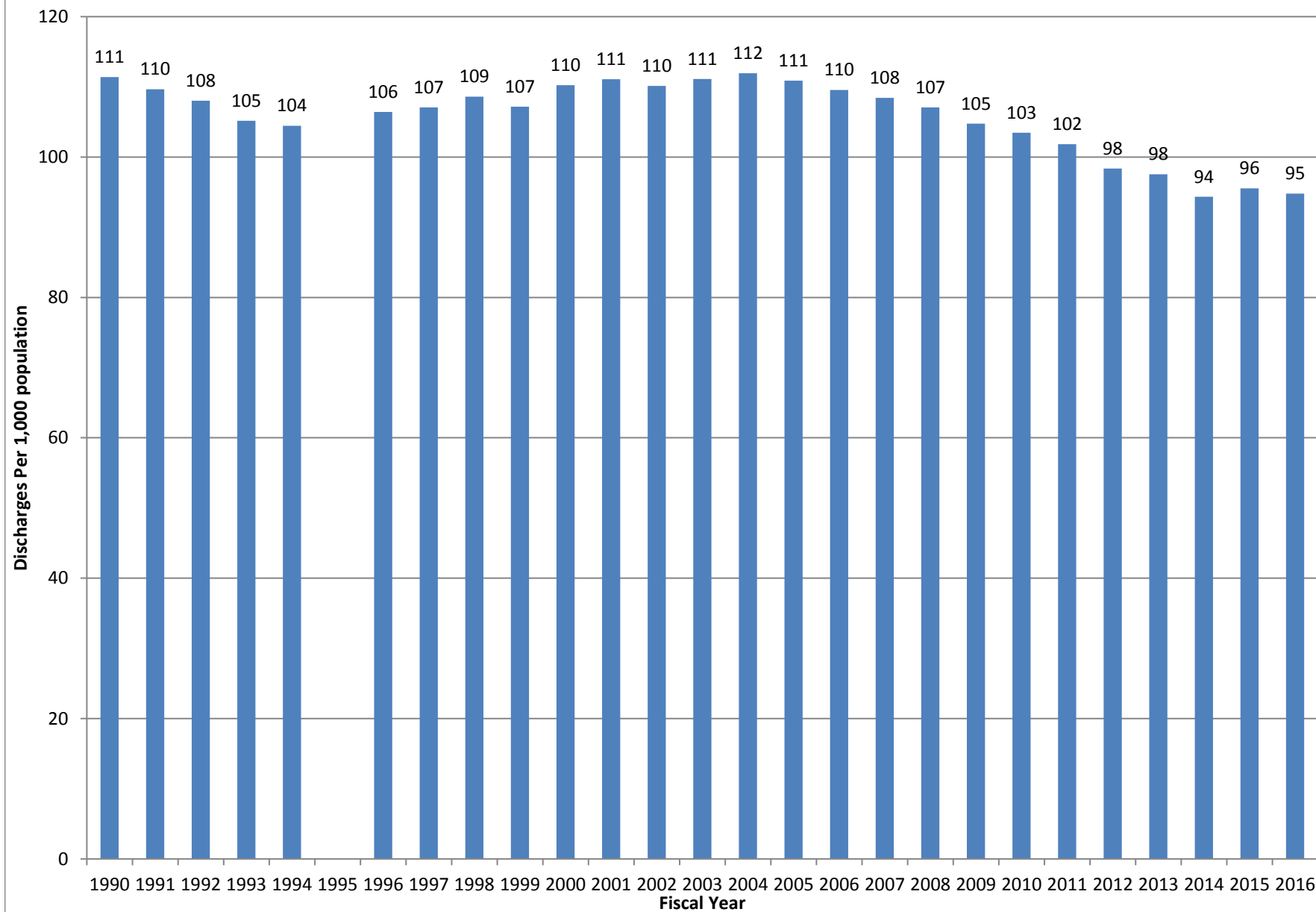
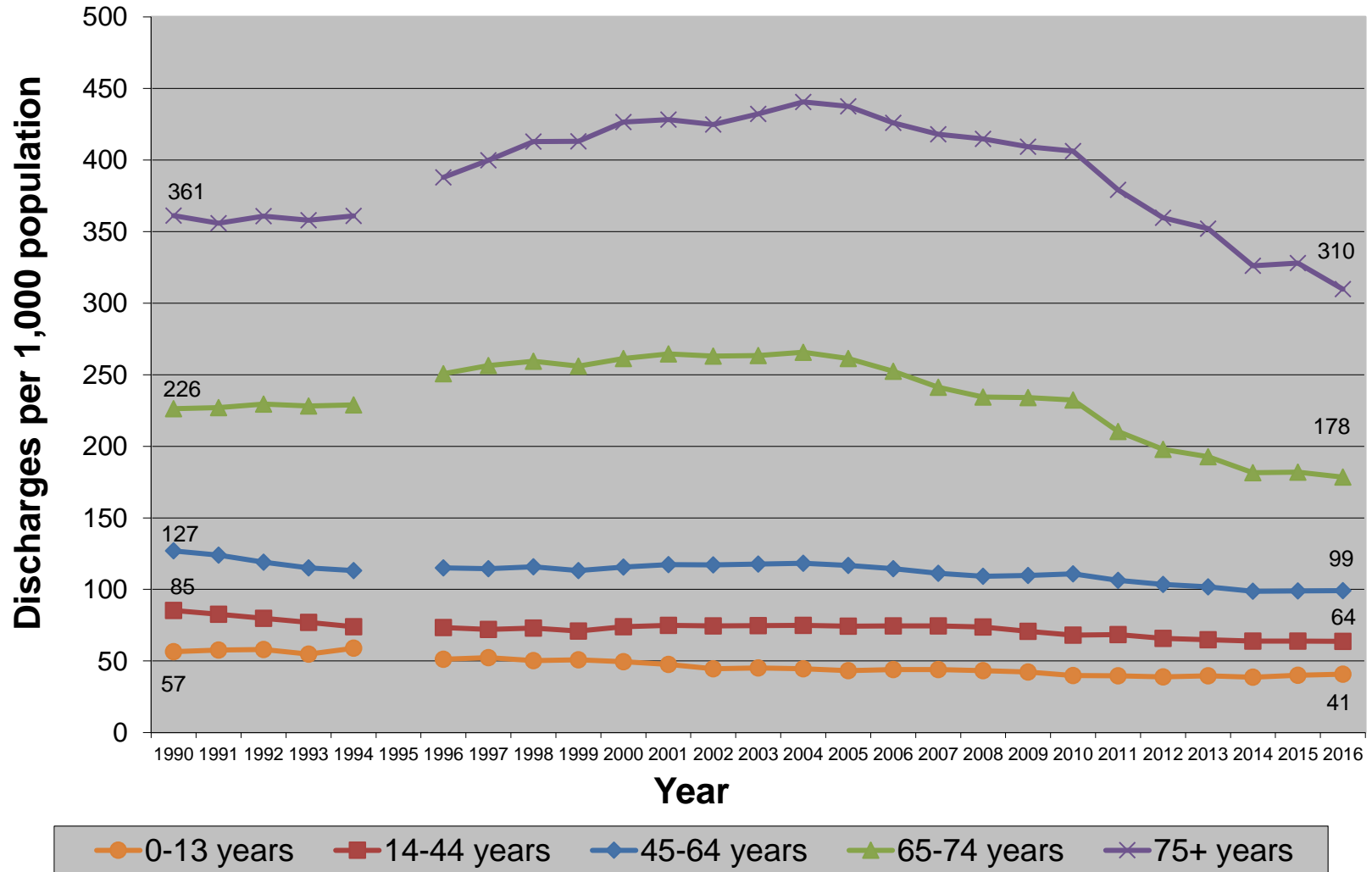


NC Acute Care Hospital Discharges, per 1,000 population, 1990-2016



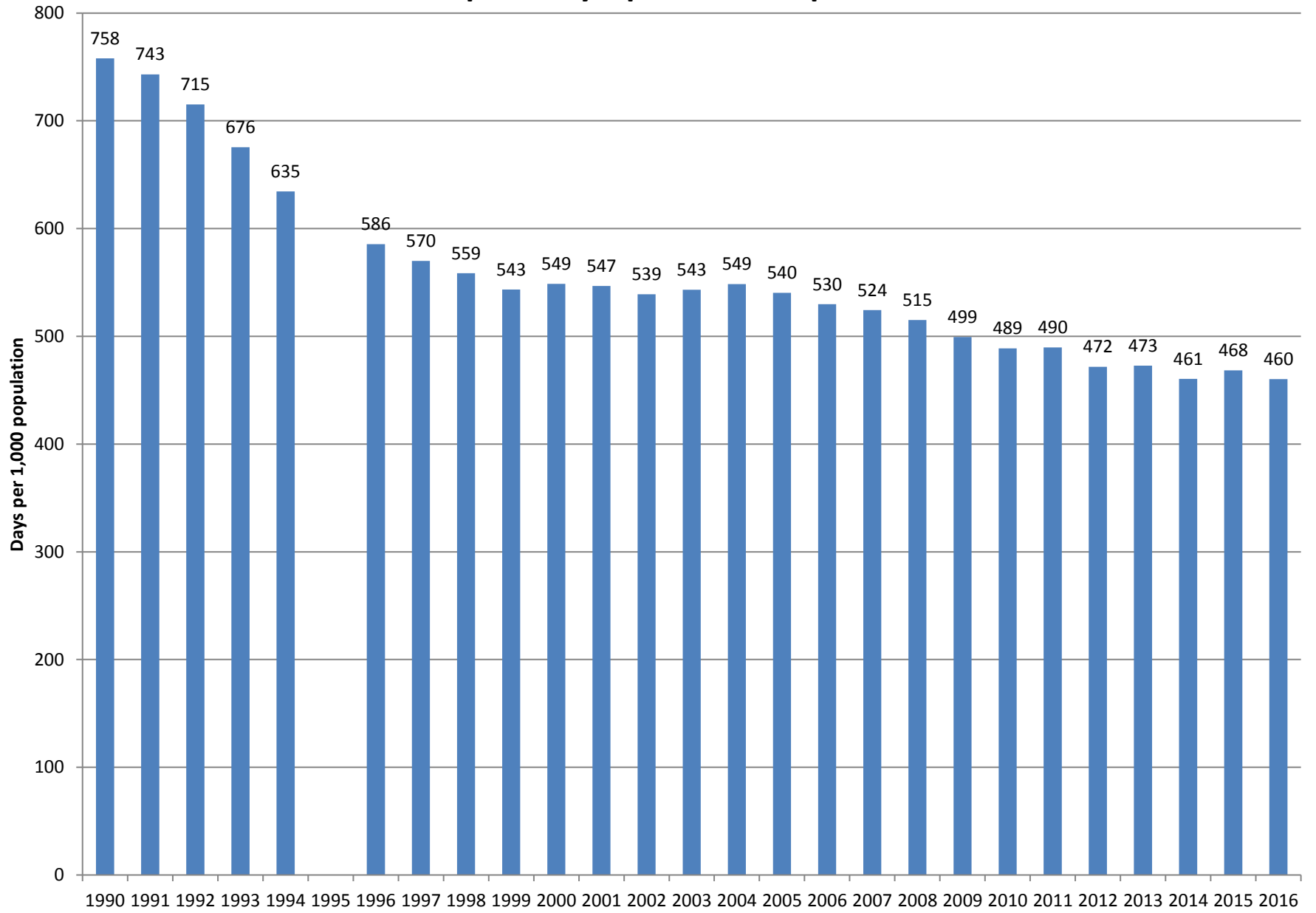
Source: Truven Health Analytics (96-16) and NC Medical Database Commission (90-94), 1995 not reported. Population data from NC Office of State Planning. No Normal Newborns, NC residents only. Produced by Cecil G. Sheps Center at UNC.

NC Acute Care Hospital Discharges per 1,000 Population October 1, 1989 to September 30, 2016



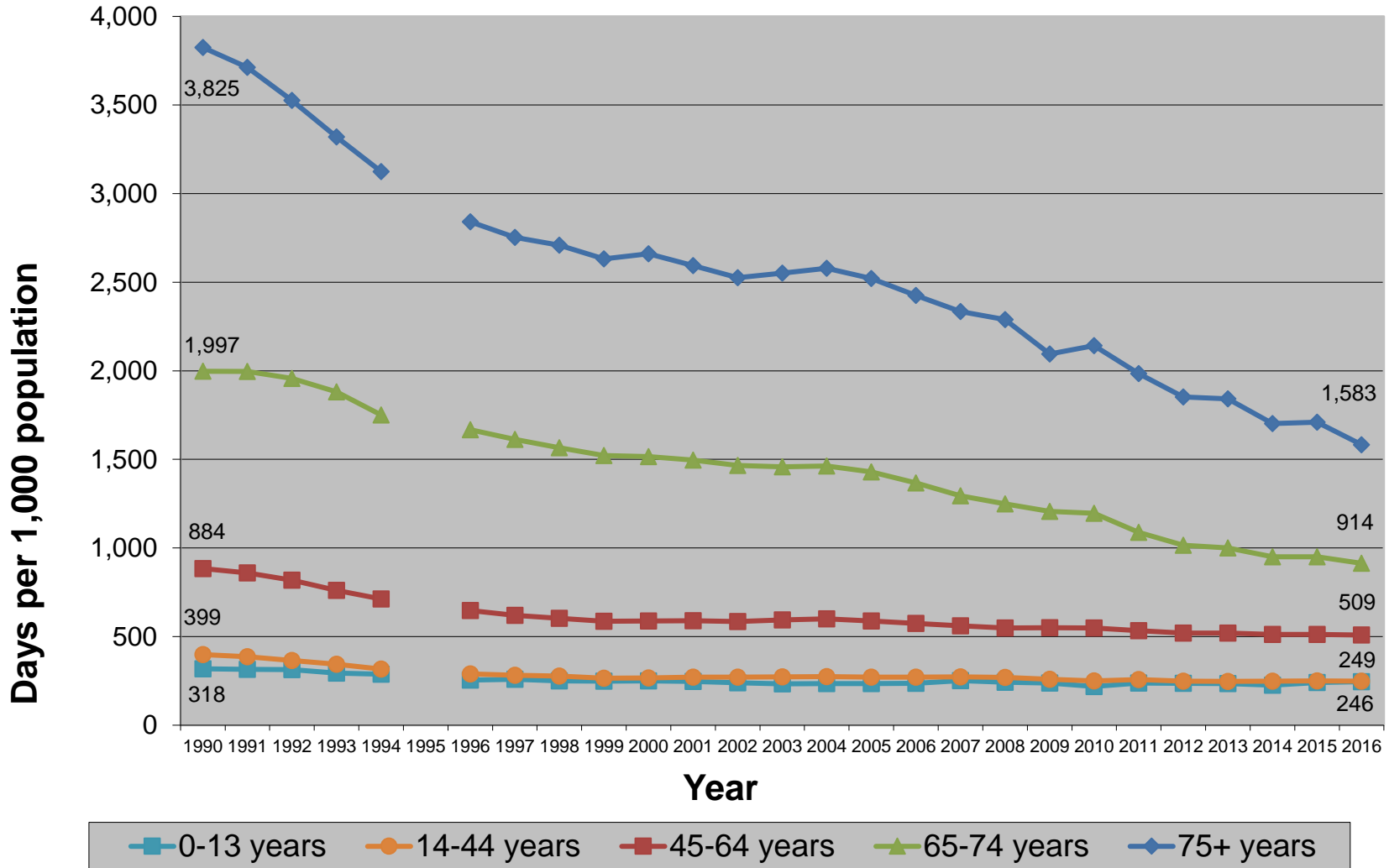
Source: Truven Health Analytics (96-16) and NC Medical Database Commission (90-94), 1995 not reported. Population data from NC Office of State Planning. No Normal Newborns, NC residents only. Produced by Cecil G. Sheps Center at UNC.

NC Acute Care Hospital Days, per 1,000 Population, 1990-2016



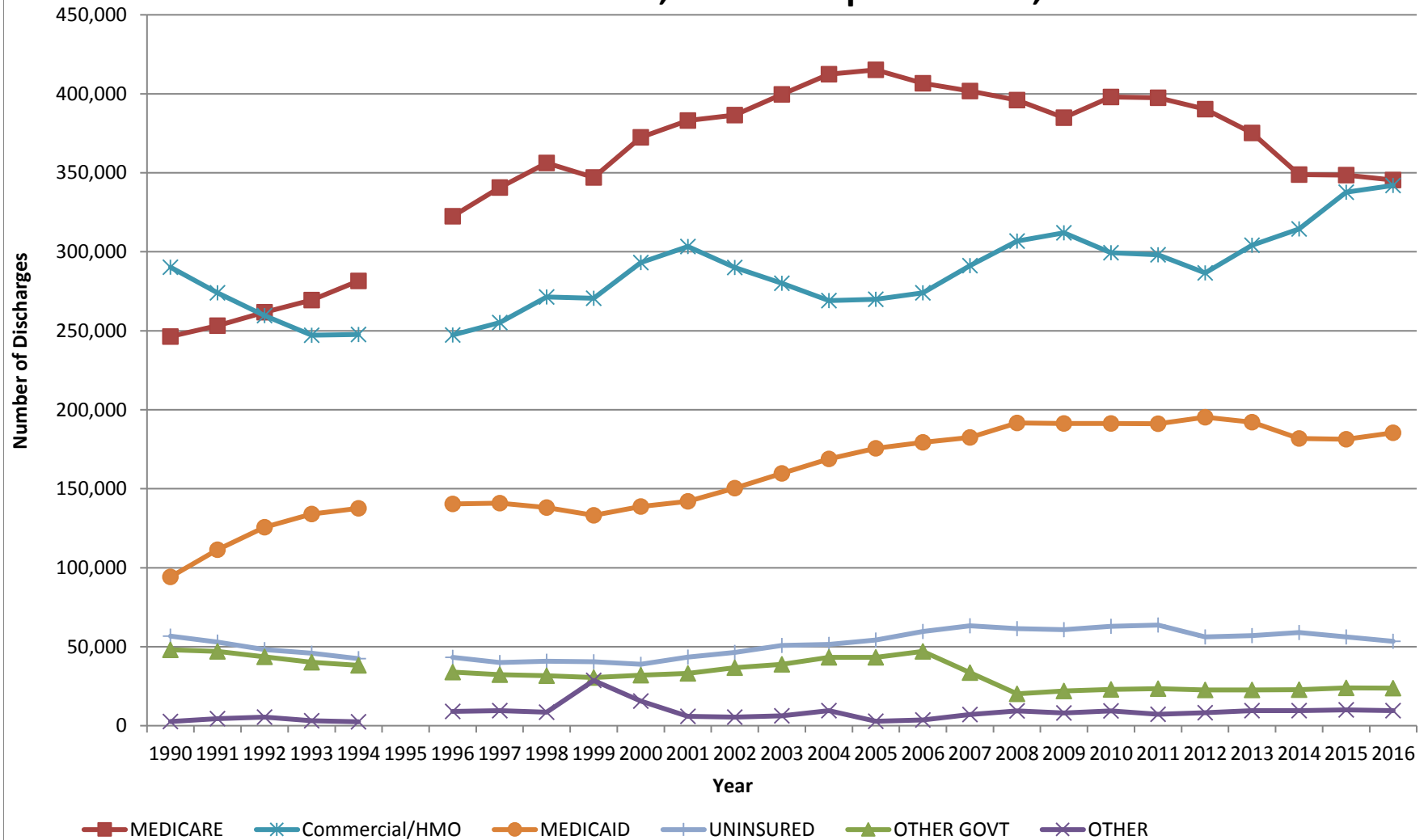
Source: Truven Health Analytics (96-16) and NC Medical Database Commission (90-94), 1995 not reported. Population data from NC Office of State Planning. No Normal Newborns, NC residents only. Produced by Cecil G. Sheps Center at UNC.

NC Acute Care Hospital Days per 1,000 Population October 1, 1989 to September 30, 2016



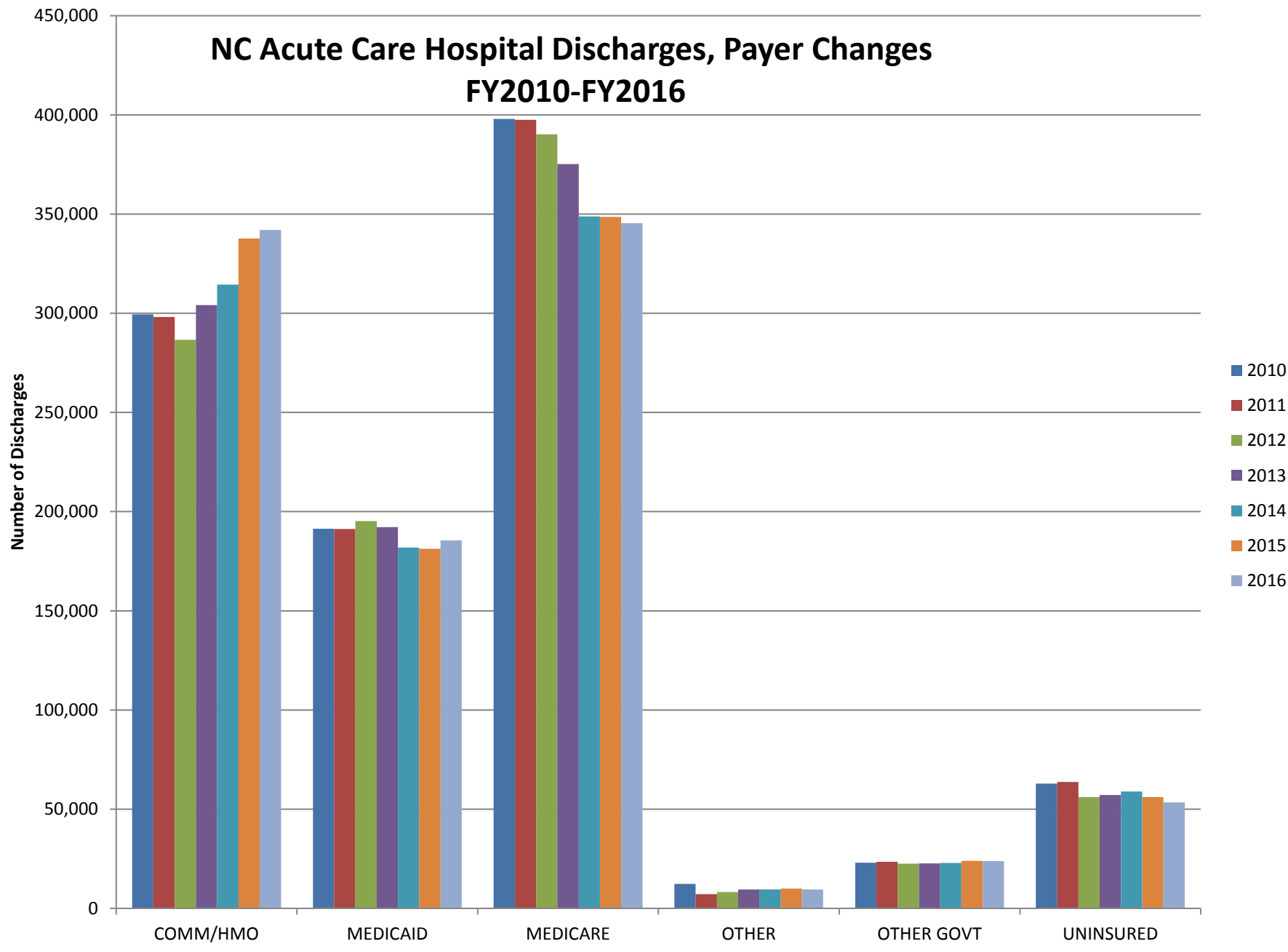
Source: Truven Health Analytics (96-16) and NC Medical Database Commission (90-94), 1995 not reported. Population data from NC Office of State Planning. No Normal Newborns, NC residents only. Produced by Cecil G. Sheps Center at UNC.

NC Acute Care Hospital Discharges, Payer Distribution October 1, 1989 to September 30, 2016



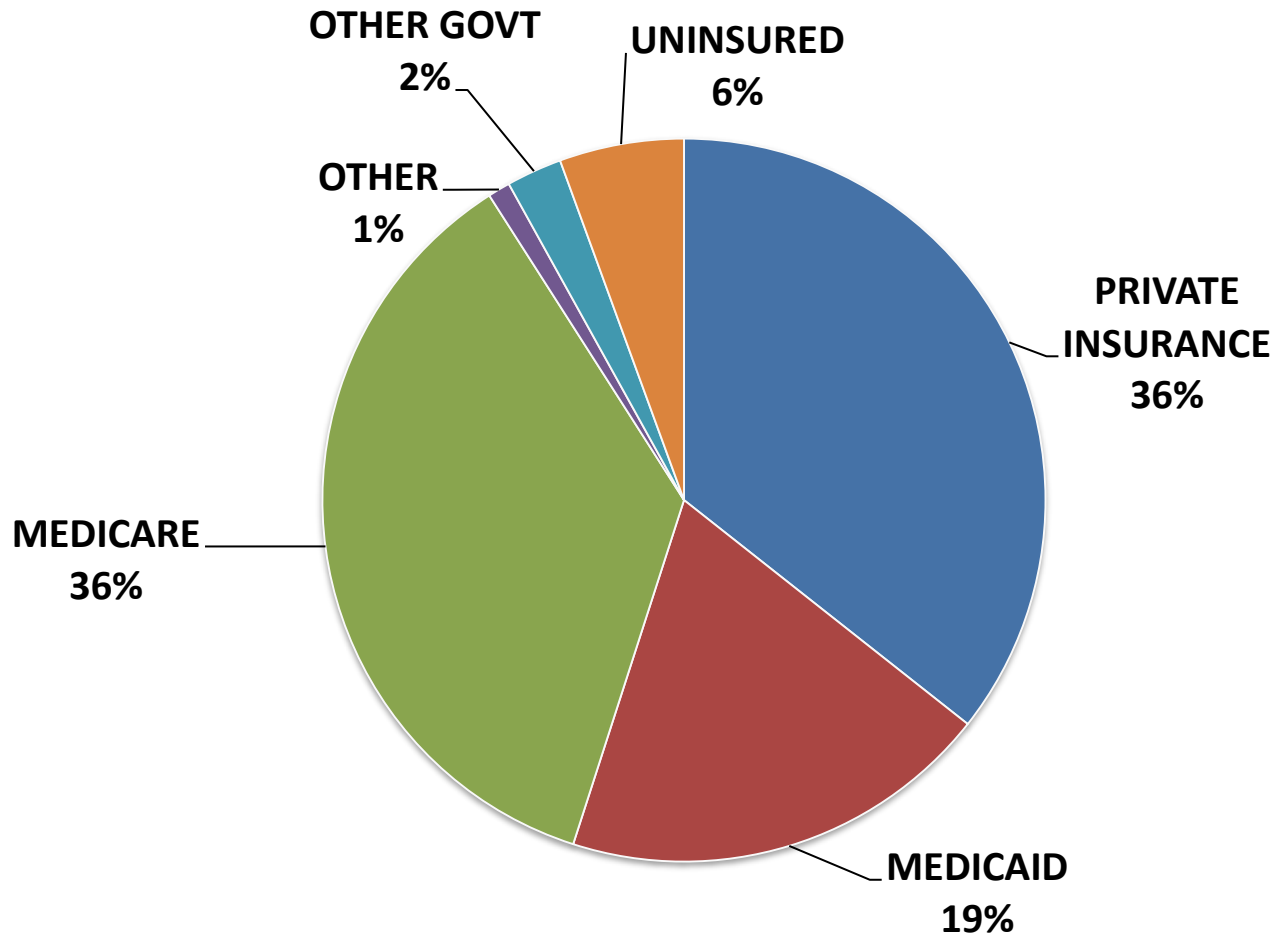
Source: Truven Health Analytics (96-16) and NC Medical Database Commission (90-94), 1995 not reported. No Normal Newborns, NC residents only.
Produced by Cecil G. Sheps Center at UNC.

NC Acute Care Hospital Discharges, Payer Changes FY2010-FY2016



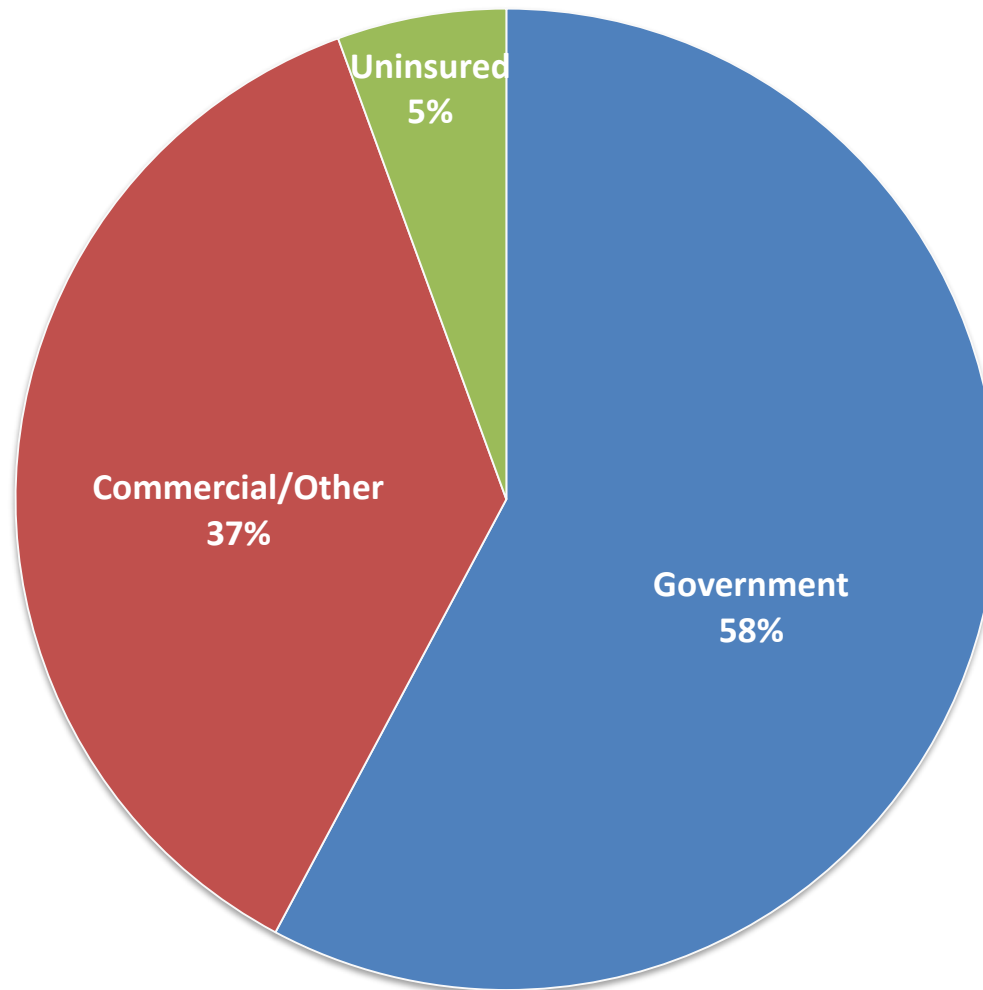
Source: Truven Health Analytics. No Normal Newborns, NC residents only. Produced by Cecil G. Sheps Center at UNC.

NC Acute Care Hospital Discharges by Payer October 1, 2015 to September 30, 2016



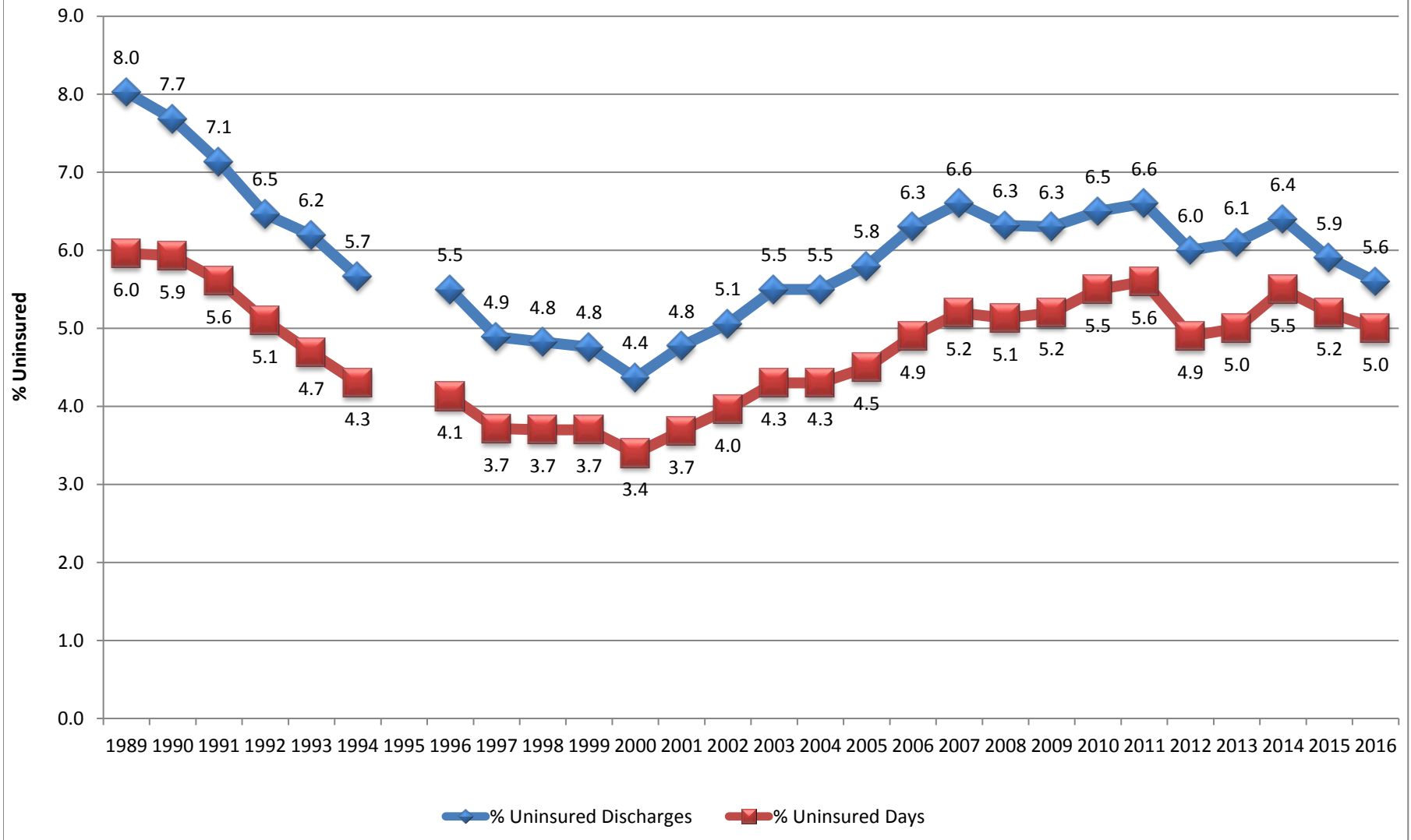
Source: Truven Health Analytics. No Normal Newborns, NC residents only.
Produced by Cecil G. Sheps Center at UNC.

**NC Acute Care Hospital Discharges by Payer
October 1, 2015 to September 30, 2016**



Source: Truven Health Analytics. No Normal Newborns, NC residents only.
Produced by Cecil G. Sheps Center at UNC.

NC Uninsured Discharges and Days as Percent of Total October 1, 1989 to September 30, 2016



Source: Truven Health Analytics (96-16) and NC Medical Database Commission (90-94), 1995 not reported. All Acute Care Discharges, excluding Normal Newborns. Produced by Cecil G. Sheps Center at UNC.