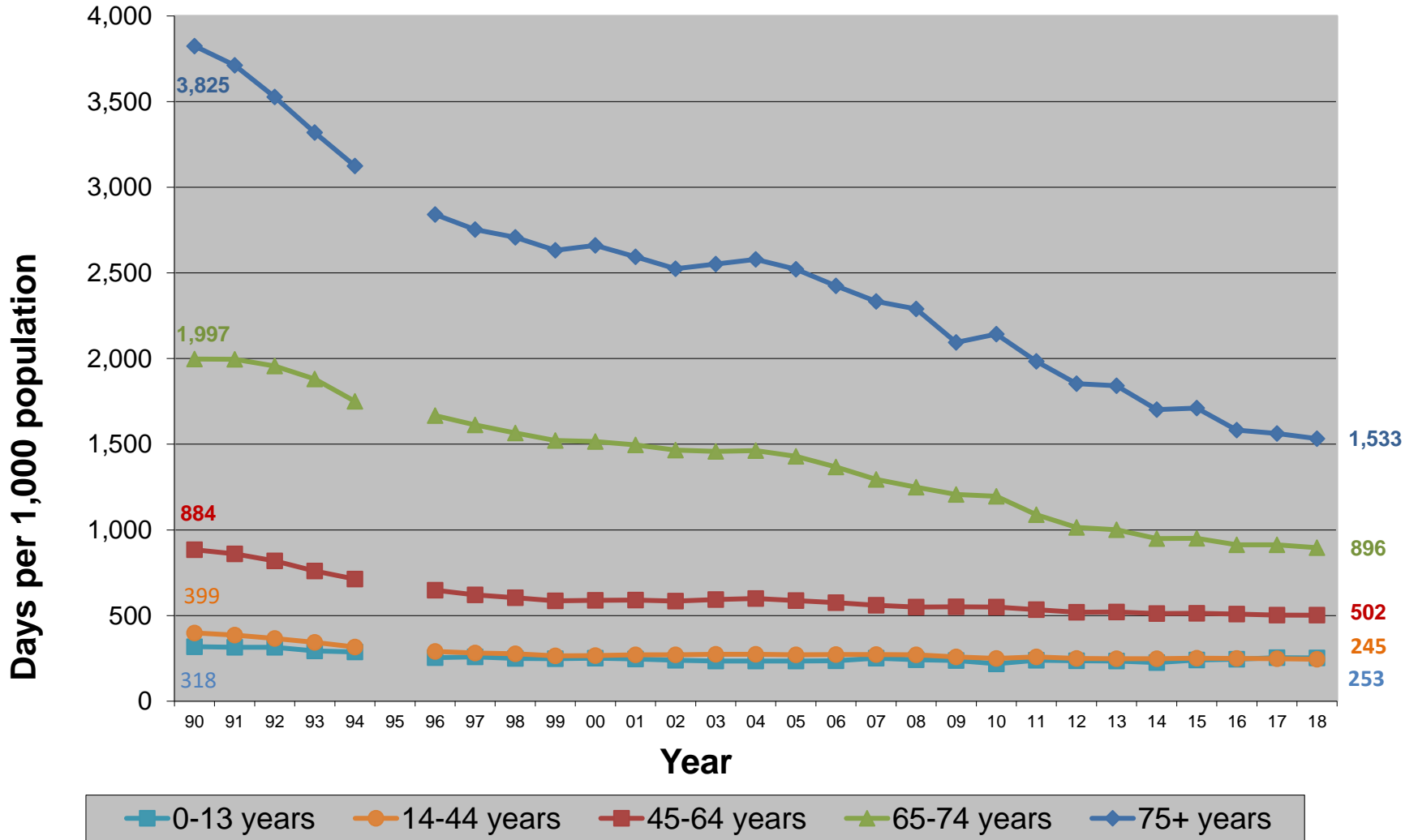
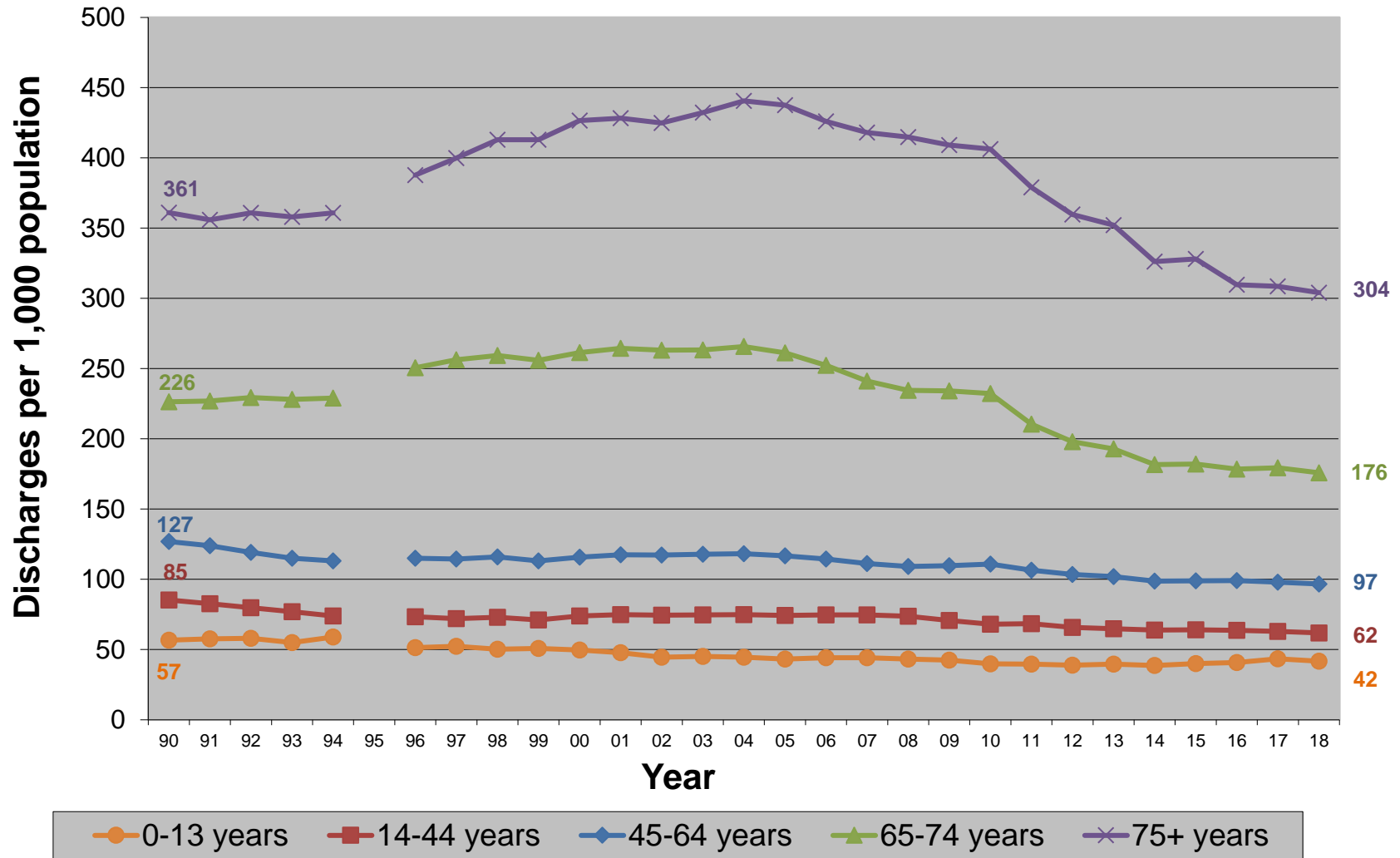


## NC Acute Care Hospital Days per 1,000 Population October 1, 1989 to September 30, 2018



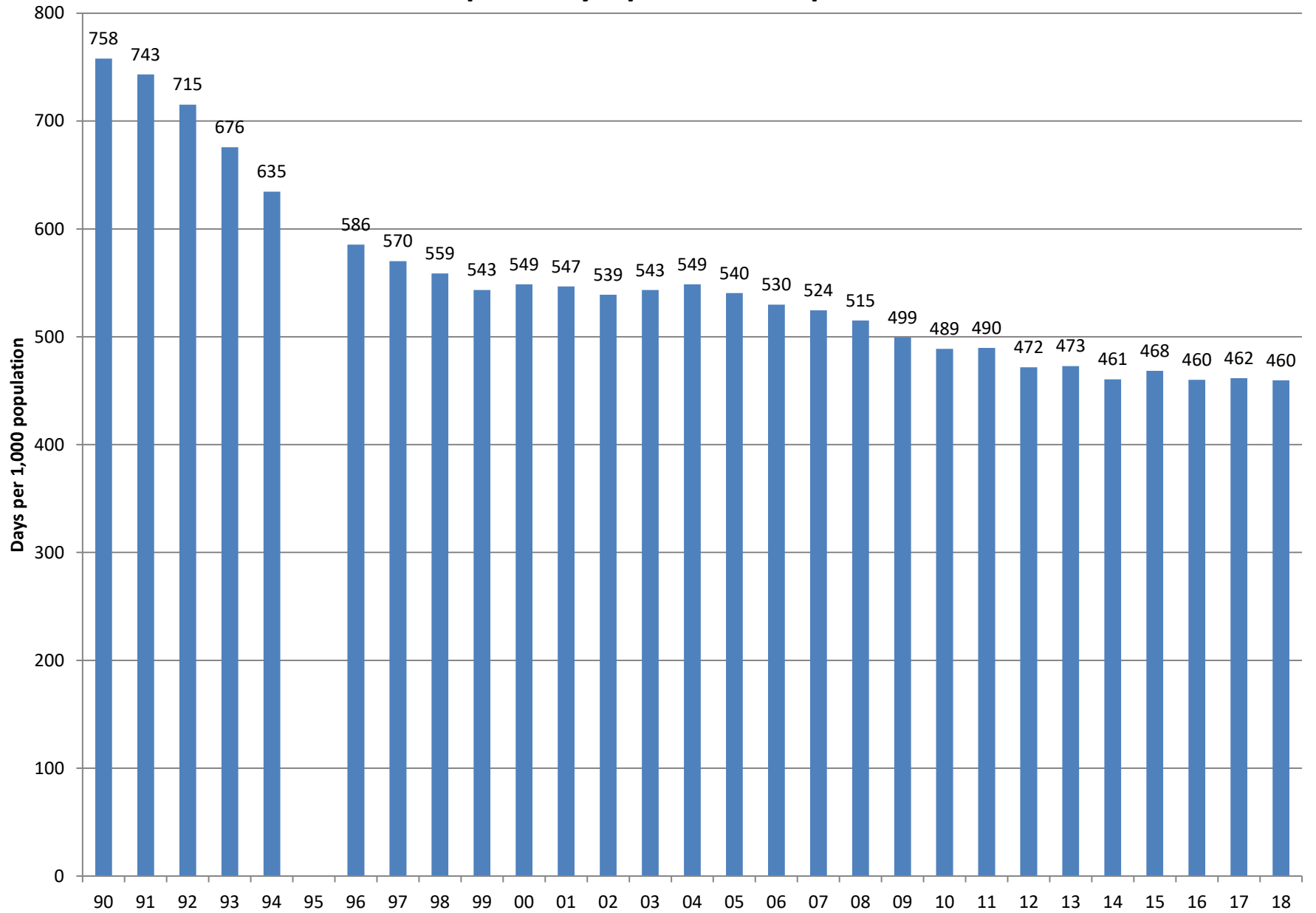
Source: IBM Watson Health (96-18) and NC Medical Database Commission (90-94), 1995 not reported. Population data from NC Office of State Planning. No Normal Newborns, NC residents only. Produced by Cecil G. Sheps Center at UNC.

## NC Acute Care Hospital Discharges per 1,000 Population October 1, 1989 to September 30, 2018



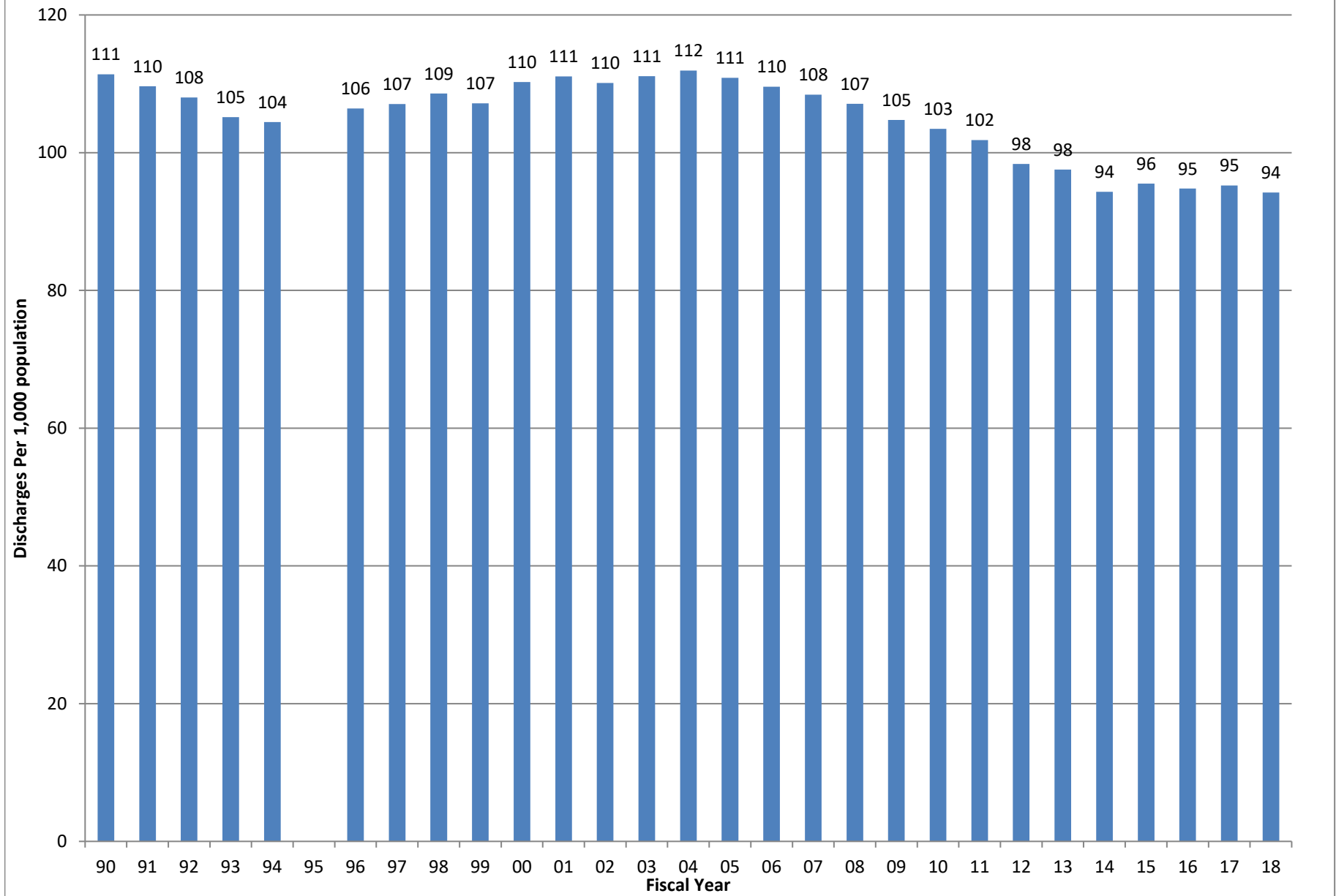
Source: IBM Watson Health (96-18) and NC Medical Database Commission (90-94), 1995 not reported. Population data from NC Office of State Planning. No Normal Newborns, NC residents only. Produced by Cecil G. Sheps Center at UNC.

## NC Acute Care Hospital Days, per 1,000 Population, 1990-2018



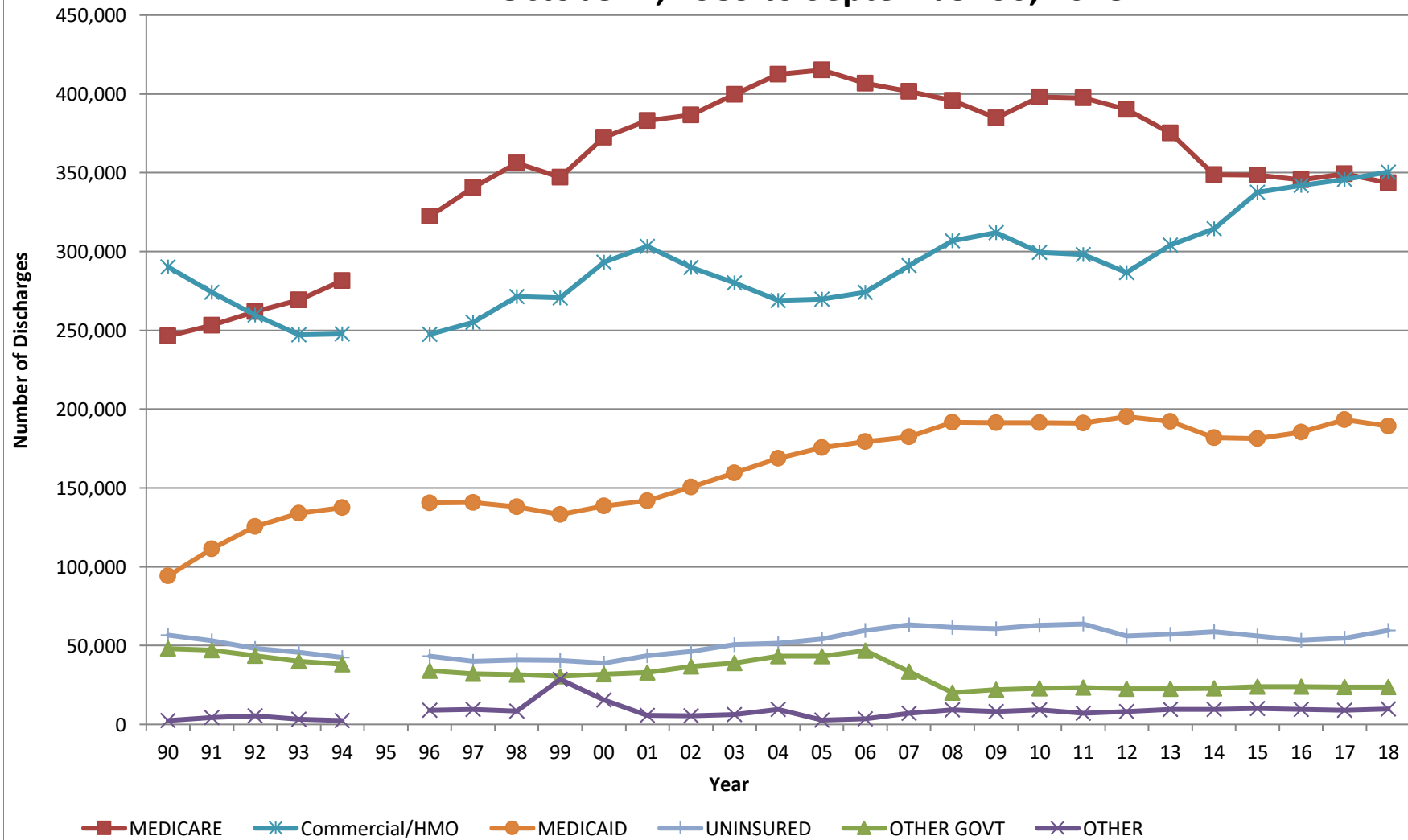
Source: IBM Watson Health (96-18) and NC Medical Database Commission (90-94), 1995 not reported. Population data from NC Office of State Planning. No Normal Newborns, NC residents only. Produced by Cecil G. Sheps Center at UNC.

## NC Acute Care Hospital Discharges, per 1,000 population, 1990-2018



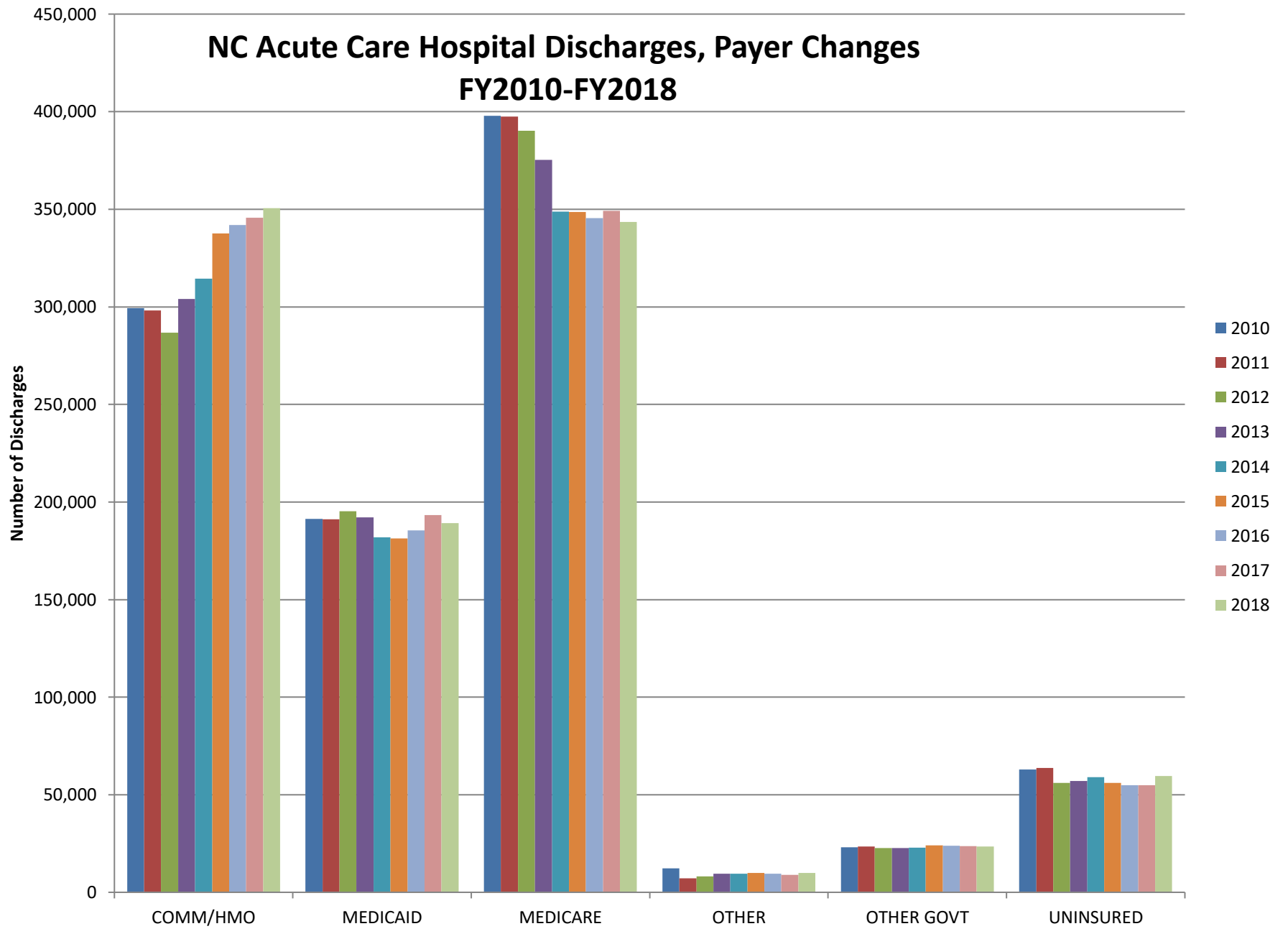
Source: IBM Watson Health (96-18) and NC Medical Database Commission (90-94), 1995 not reported. Population data from NC Office of State Planning. No Normal Newborns, NC residents only. Produced by Cecil G. Sheps Center at UNC.

## NC Acute Care Hospital Discharges, Payer Distribution October 1, 1989 to September 30, 2018



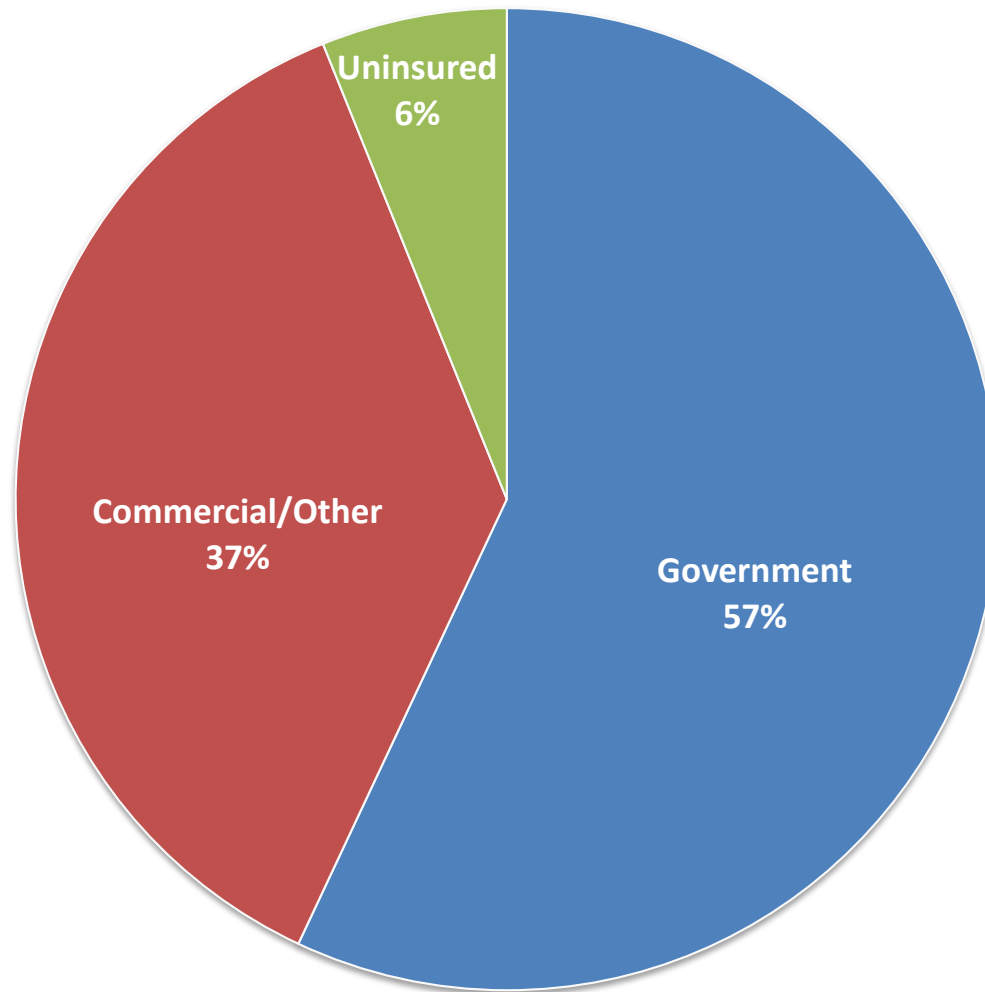
Source: IBM Watson Health (96-18) and NC Medical Database Commission (90-94), 1995 not reported. No Normal Newborns, NC residents only.  
Produced by Cecil G. Sheps Center at UNC.

## NC Acute Care Hospital Discharges, Payer Changes FY2010-FY2018



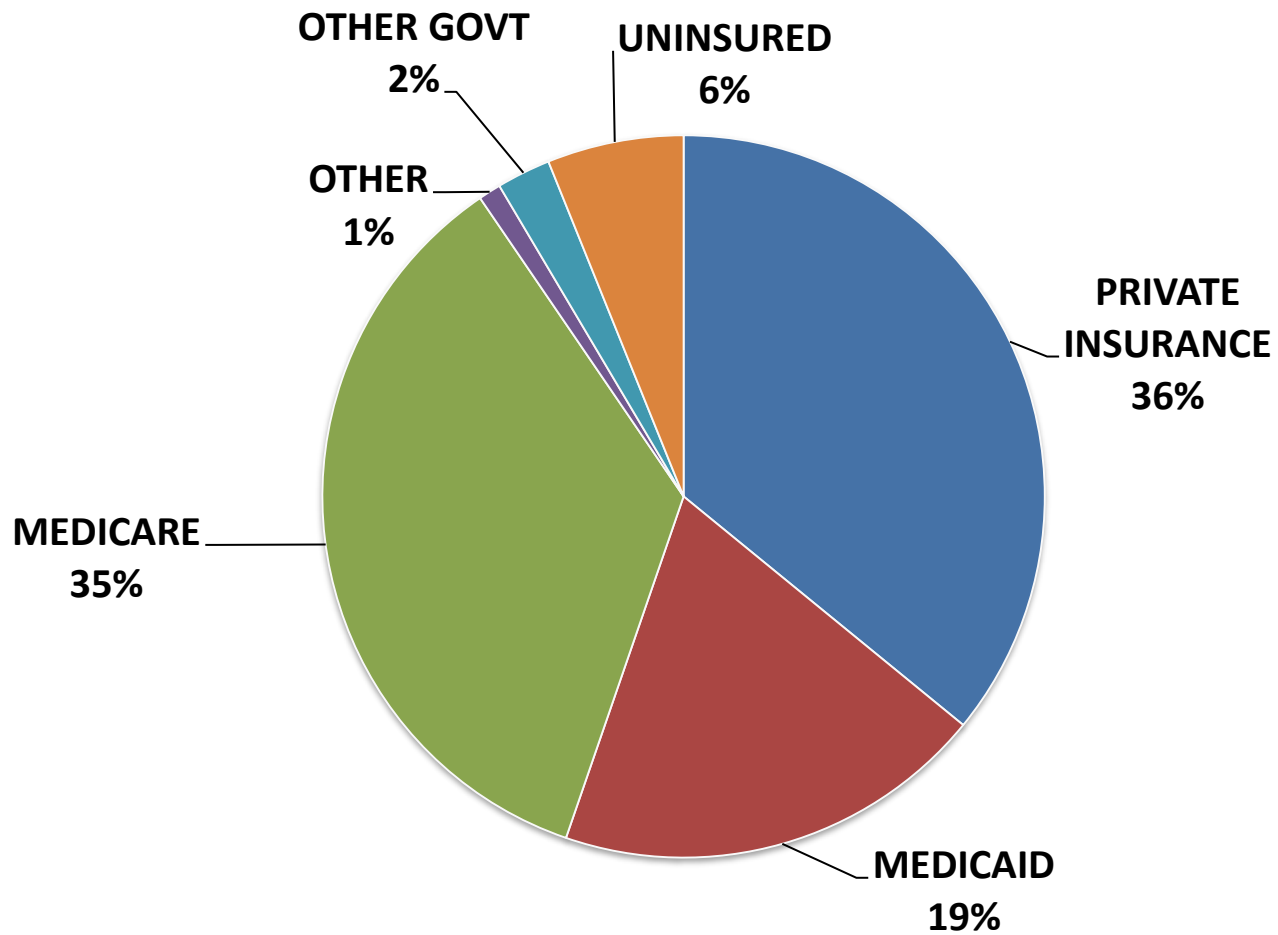
Source: IBM Watson Health. No Normal Newborns, NC residents only. Produced by Cecil G. Sheps Center at UNC.

**NC Acute Care Hospital Discharges by Payer  
October 1, 2017 to September 30, 2018**



Source: IBM Watson Health. No Normal Newborns, NC residents only.  
Produced by Cecil G. Sheps Center at UNC.

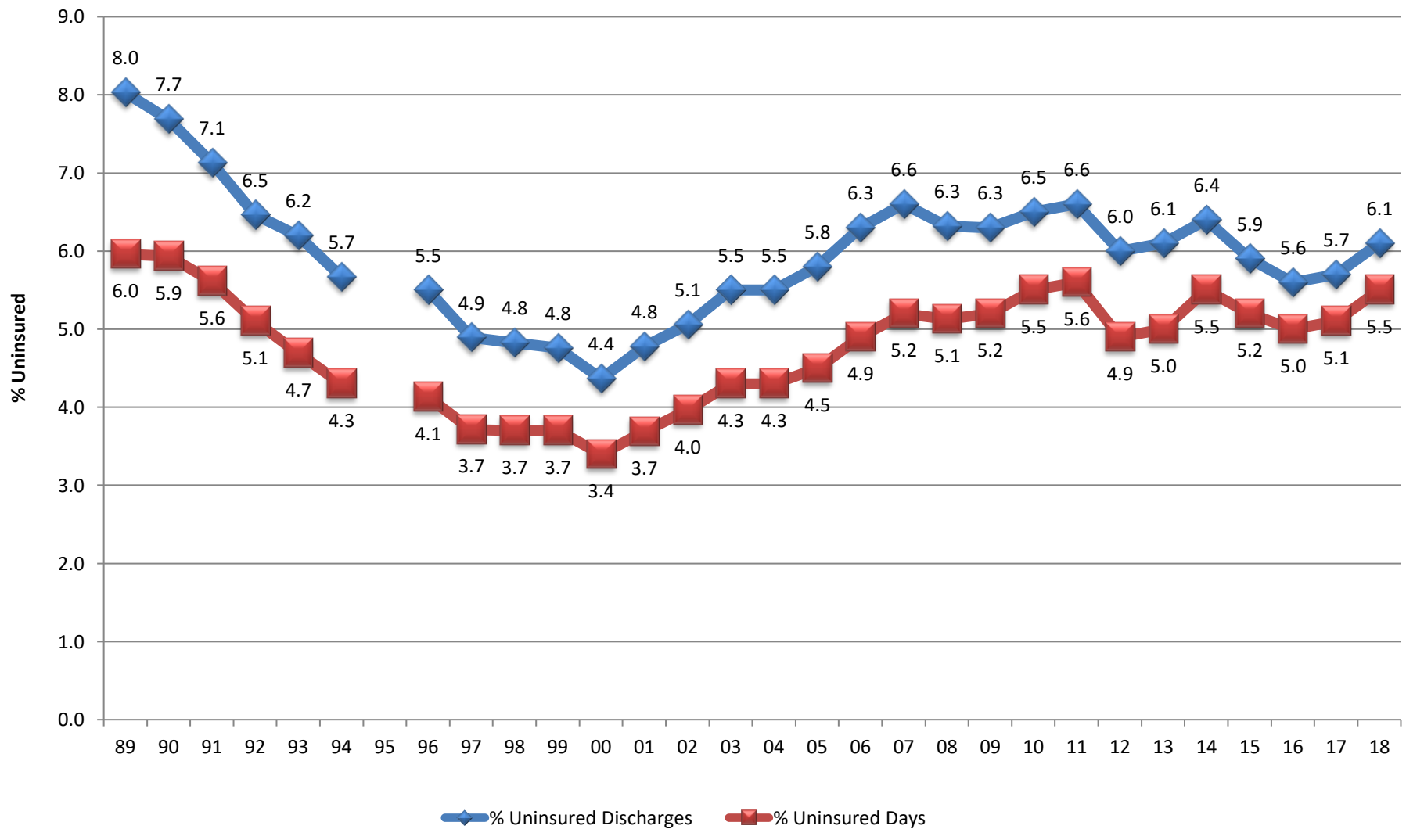
**NC Acute Care Hospital Discharges by Payer  
October 1, 2017 to September 30, 2018**



Source: IBM Watson Health. No Normal Newborns, NC residents only.  
Produced by Cecil G. Sheps Center at UNC.



## NC Uninsured Discharges and Days as Percent of Total October 1, 1989 to September 30, 2018



Source: IBM Watson Health (96-18) and NC Medical Database Commission (90-94), 1995 not reported. All Acute Care Discharges, excluding Normal Newborns. Produced by Cecil G. Sheps Center at UNC.