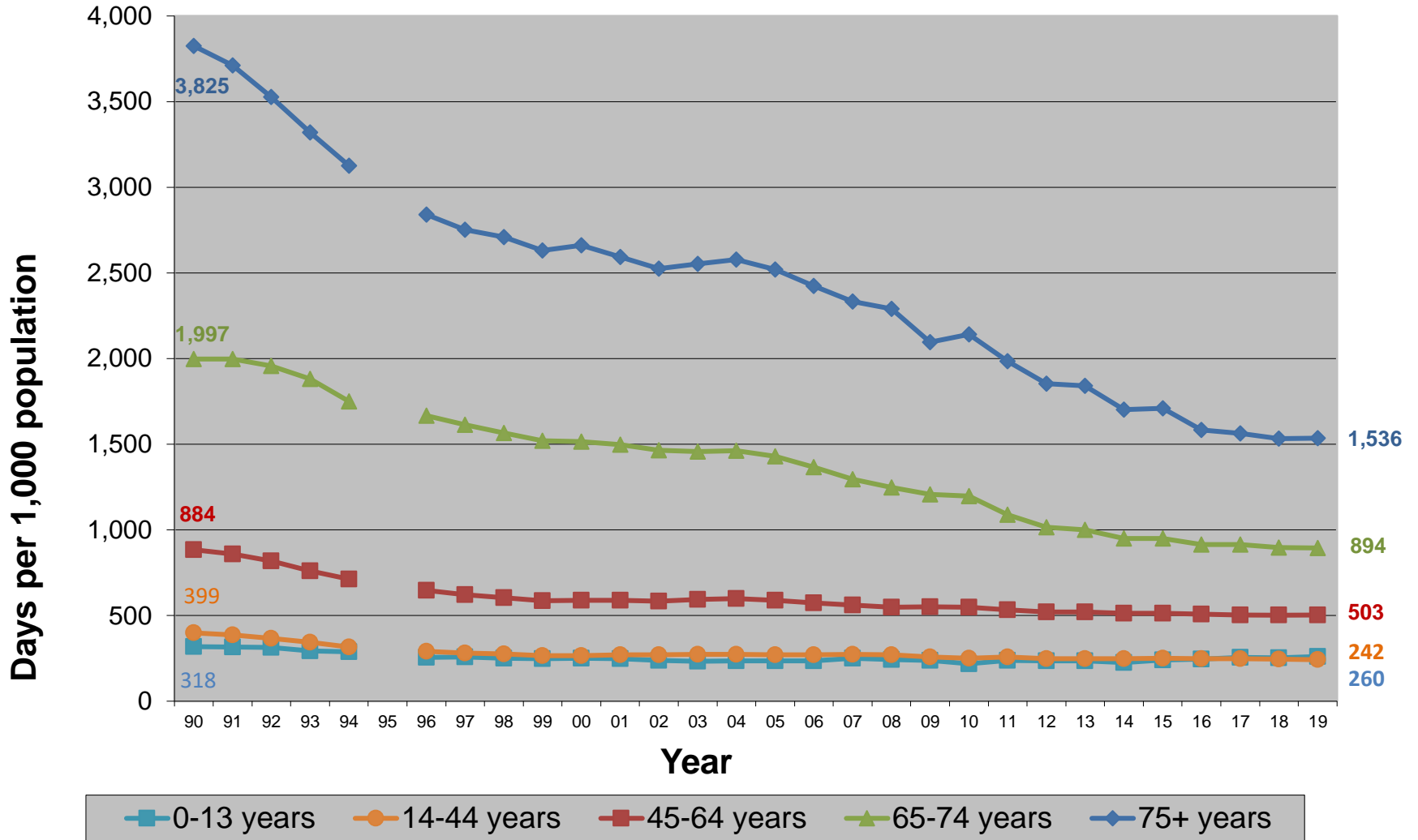
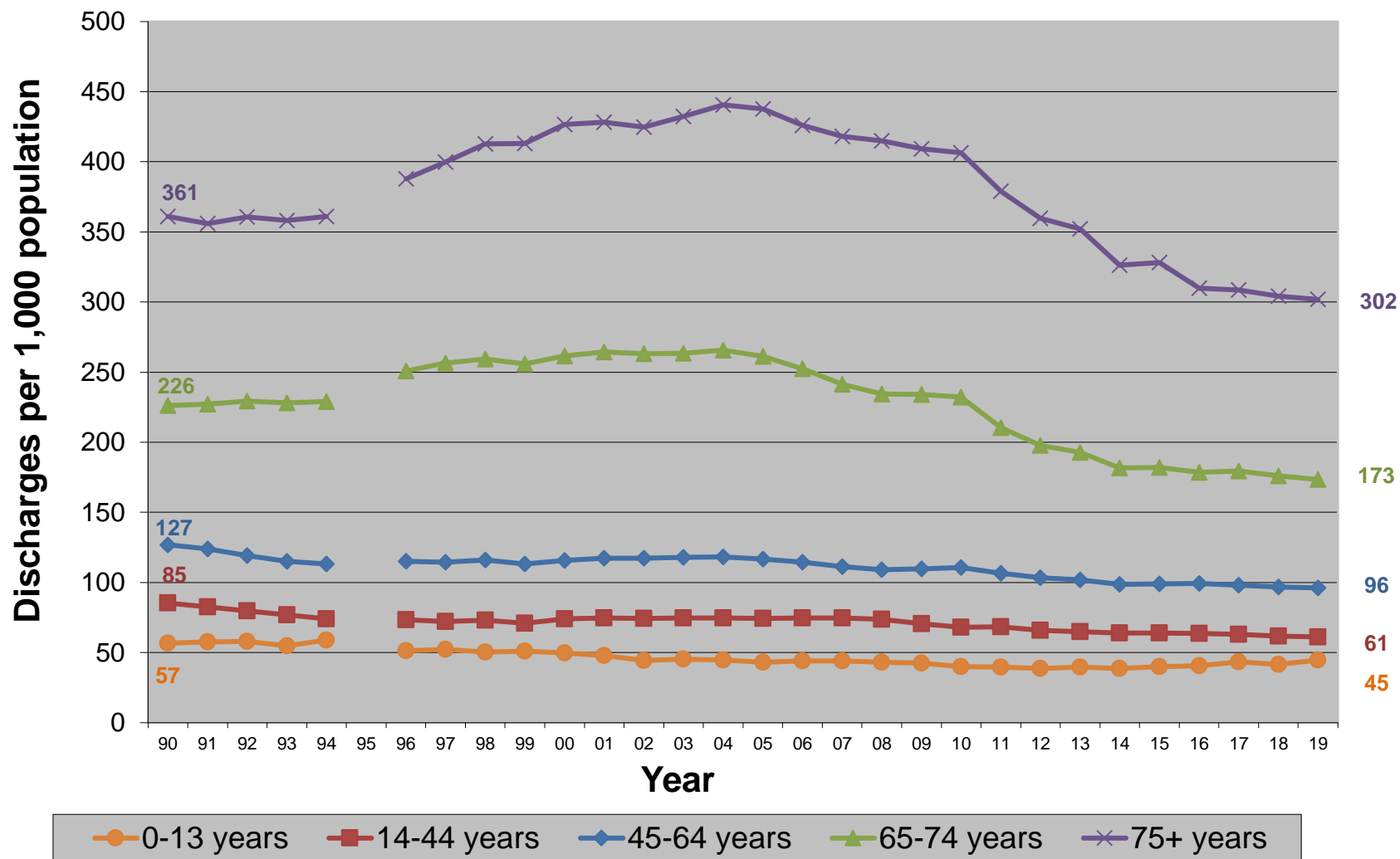


NC Acute Care Hospital Days per 1,000 Population October 1, 1989 to September 30, 2019



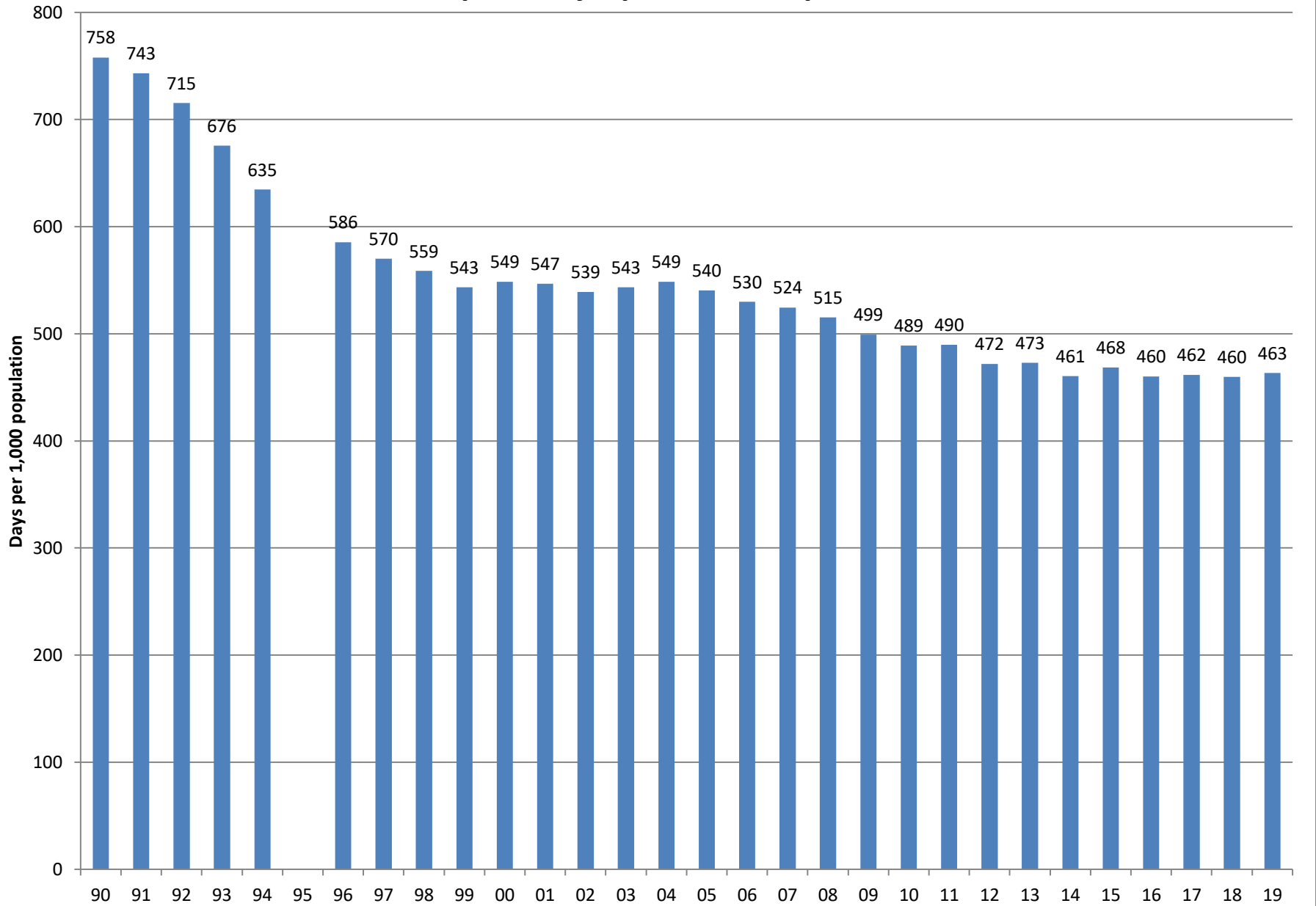
Source: IBM Watson Health (96-19) and NC Medical Database Commission (90-94), 1995 not reported. Population data from NC Office of State Planning. No Normal Newborns, NC residents only. Produced by Cecil G. Sheps Center at UNC.

NC Acute Care Hospital Discharges per 1,000 Population October 1, 1989 to September 30, 2019



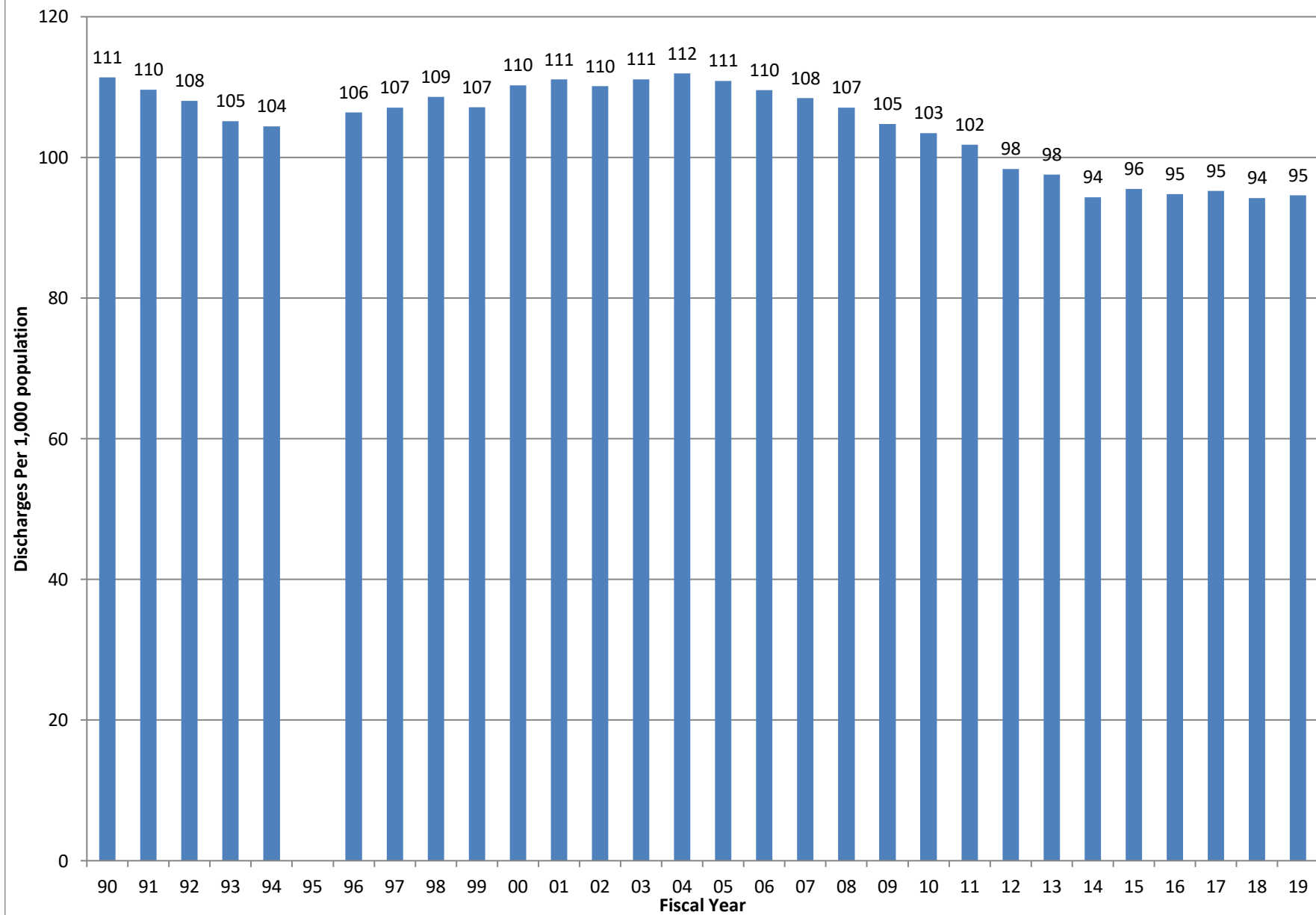
Source: IBM Watson Health (96-19) and NC Medical Database Commission (90-94), 1995 not reported. Population data from NC Office of State Planning. No Normal Newborns, NC residents only. Produced by Cecil G. Sheps Center at UNC.

NC Acute Care Hospital Days, per 1,000 Population, 1990-2019



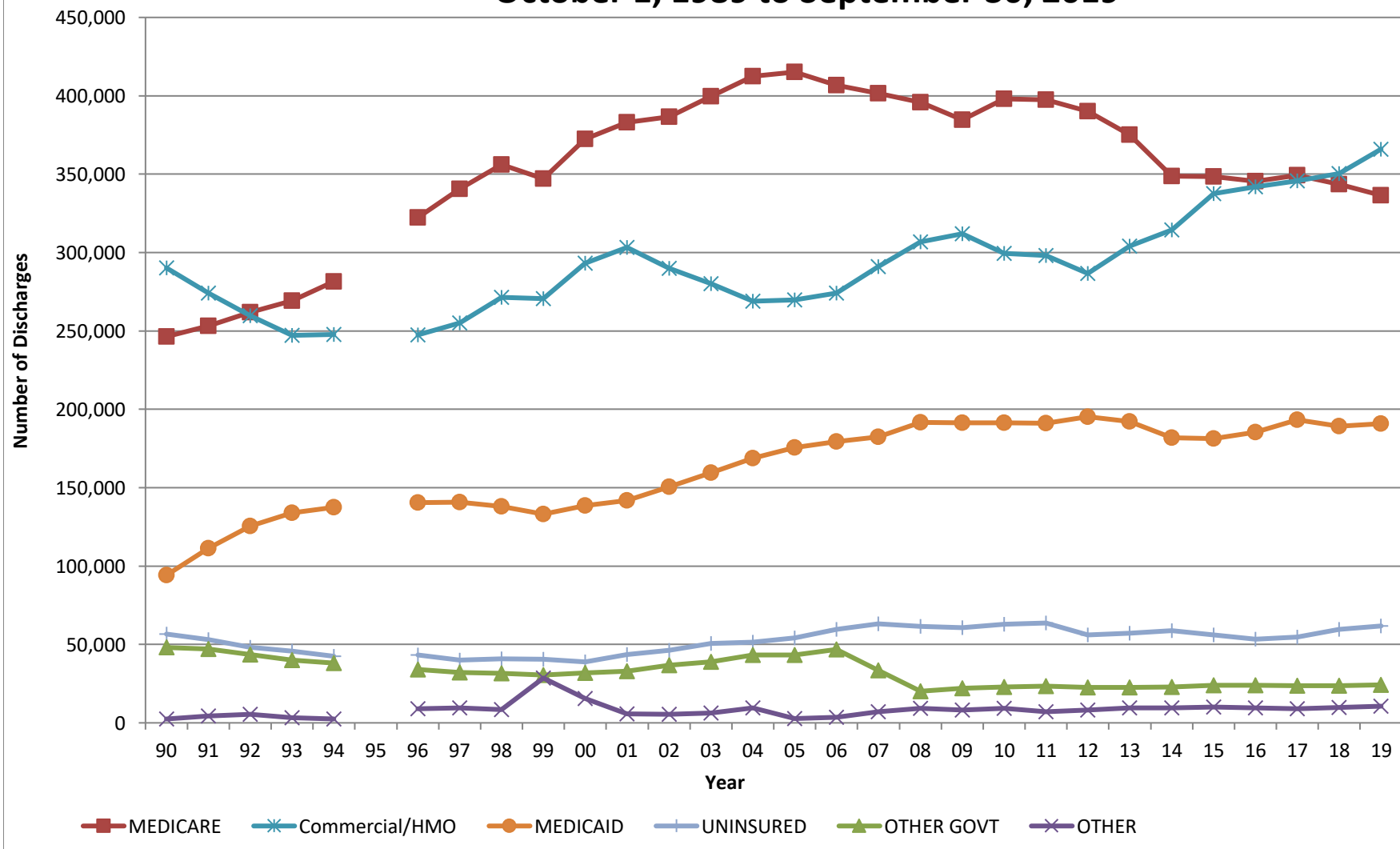
Source: IBM Watson Health (96-19) and NC Medical Database Commission (90-94), 1995 not reported. Population data from NC Office of State Planning. No Normal Newborns, NC residents only. Produced by Cecil G. Sheps Center at UNC.

NC Acute Care Hospital Discharges, per 1,000 population, 1990-2019



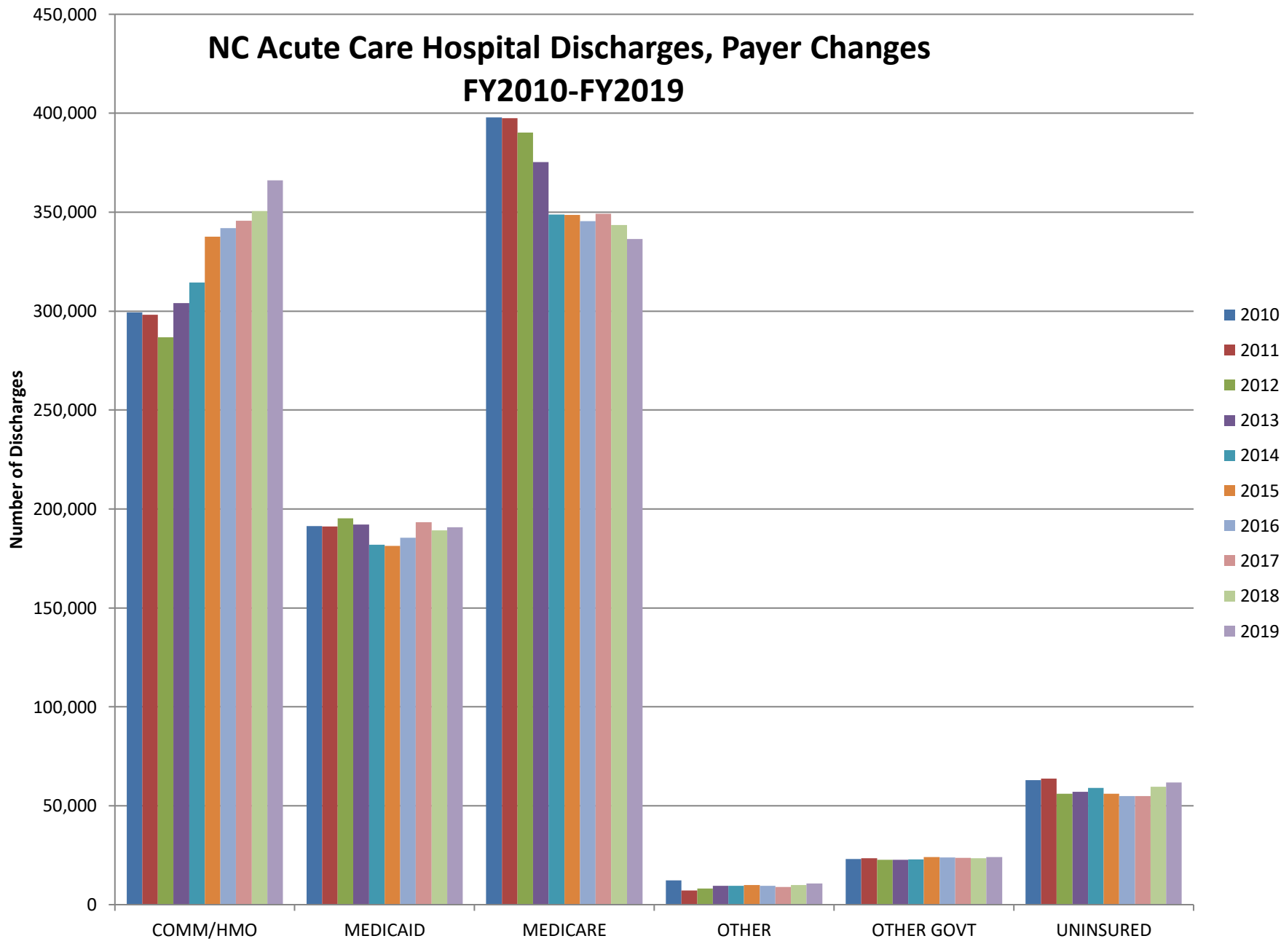
Source: IBM Watson Health (96-19) and NC Medical Database Commission (90-94), 1995 not reported. Population data from NC Office of State Planning. No Normal Newborns, NC residents only. Produced by Cecil G. Sheps Center at UNC.

NC Acute Care Hospital Discharges, Payer Distribution October 1, 1989 to September 30, 2019



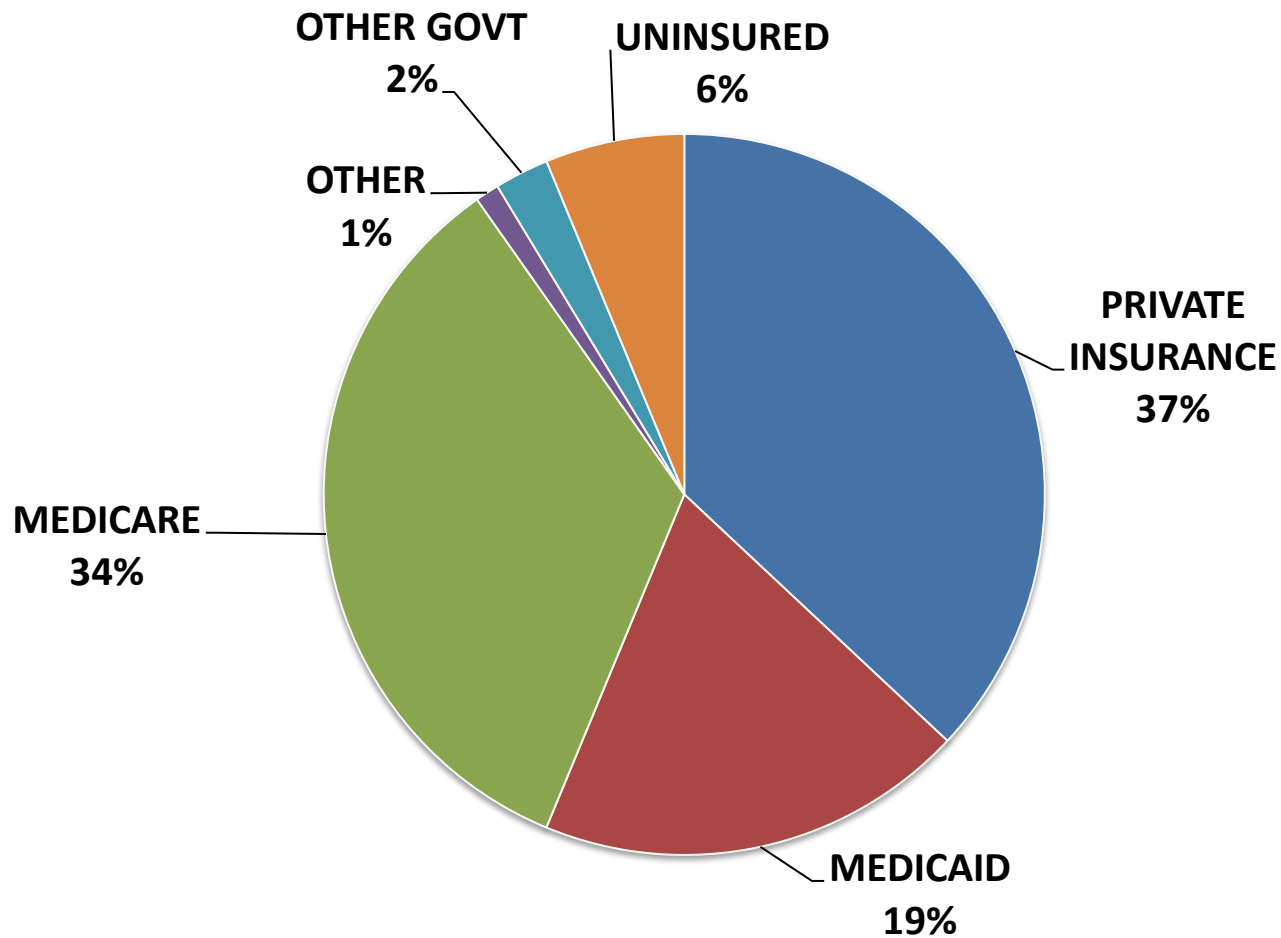
Source: IBM Watson Health (96-19) and NC Medical Database Commission (90-94), 1995 not reported. No Normal Newborns, NC residents only.
Produced by Cecil G. Sheps Center at UNC.

NC Acute Care Hospital Discharges, Payer Changes FY2010-FY2019



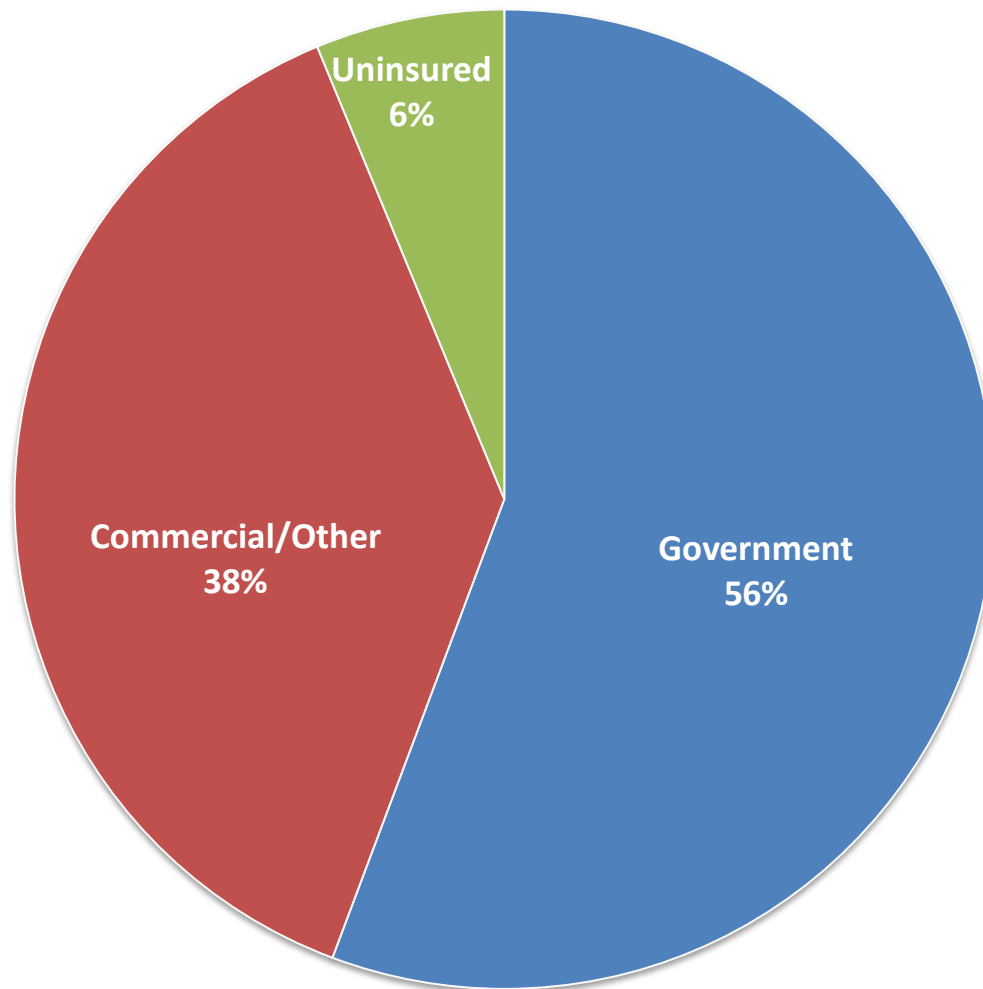
Source: IBM Watson Health. No Normal Newborns, NC residents only. Produced by Cecil G. Sheps Center at UNC.

**NC Acute Care Hospital Discharges by Payer
October 1, 2018 to September 30, 2019**



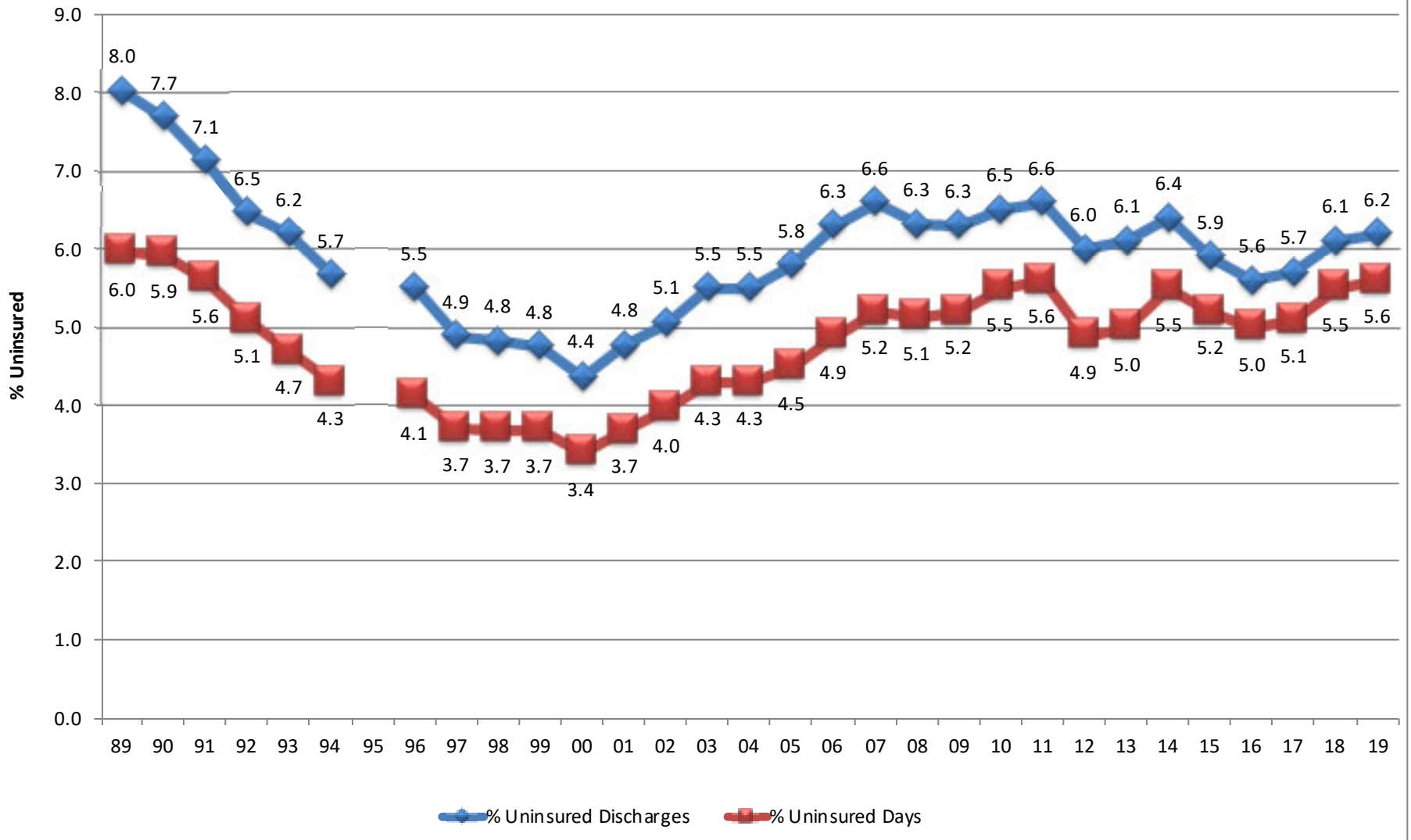
Source: IBM Watson Health. No Normal Newborns, NC residents only.
Produced by Cecil G. Sheps Center at UNC.

**NC Acute Care Hospital Discharges by Payer
October 1, 2018 to September 30, 2019**



Source: IBM Watson Health. No Normal Newborns, NC residents only.
Produced by Cecil G. Sheps Center at UNC.

NC Uninsured Discharges and Days as Percent of Total October 1, 1989 to September 30, 2019



For FY 2019, data for Columbus Regional Healthcare System are not complete and there are no data for Novant Health Mint Hill Medical Center.

Source: IBM Watson Health (96-19) and NC Medical Database Commission (90-94), 1995 not reported. All Acute Care Discharges, excluding NC Newborns. Produced by Cecil G. Sheps Center at UNC.