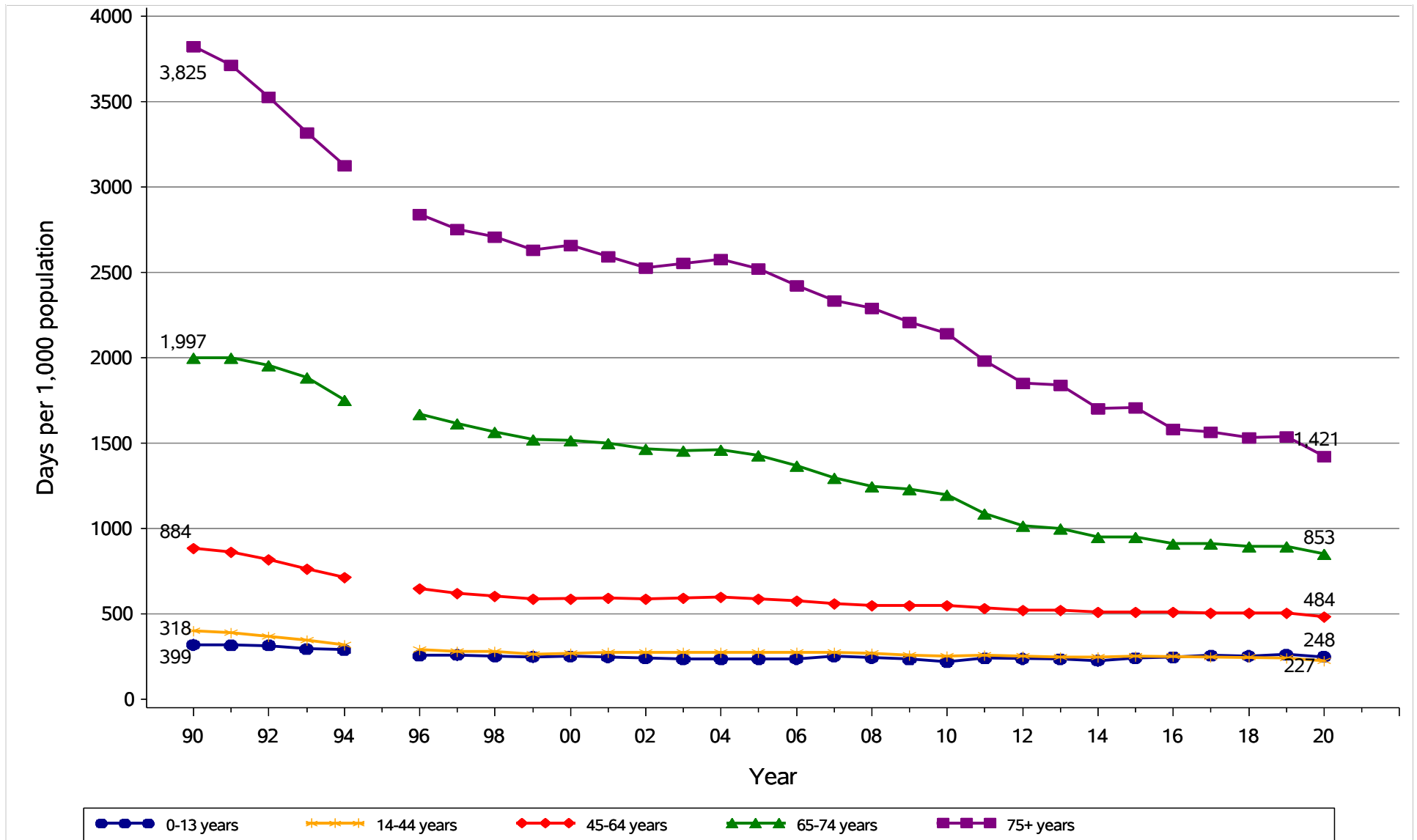


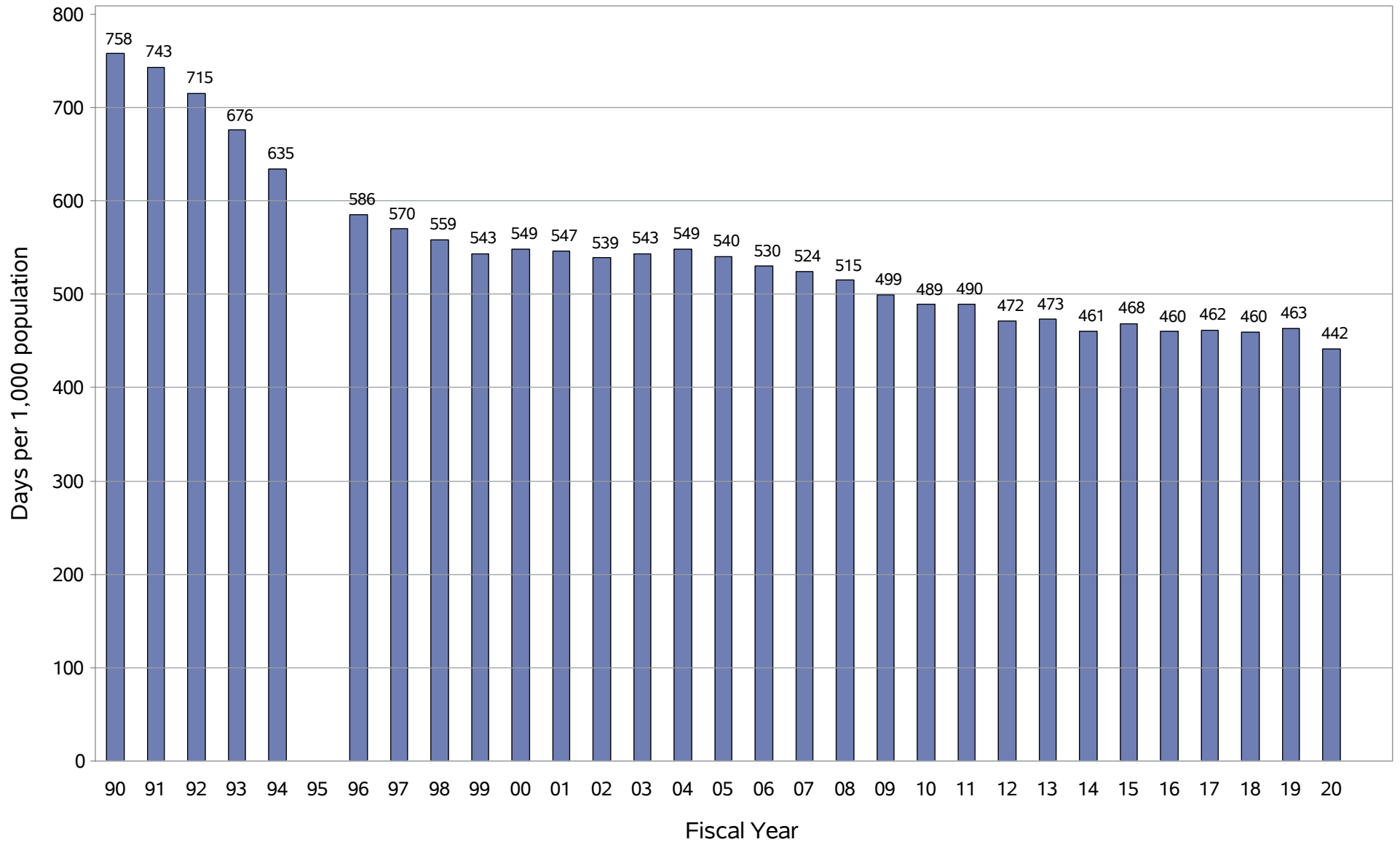
NC Acute Care Hospital Days per 1,000 population

October 1, 1989 to September 30, 2020



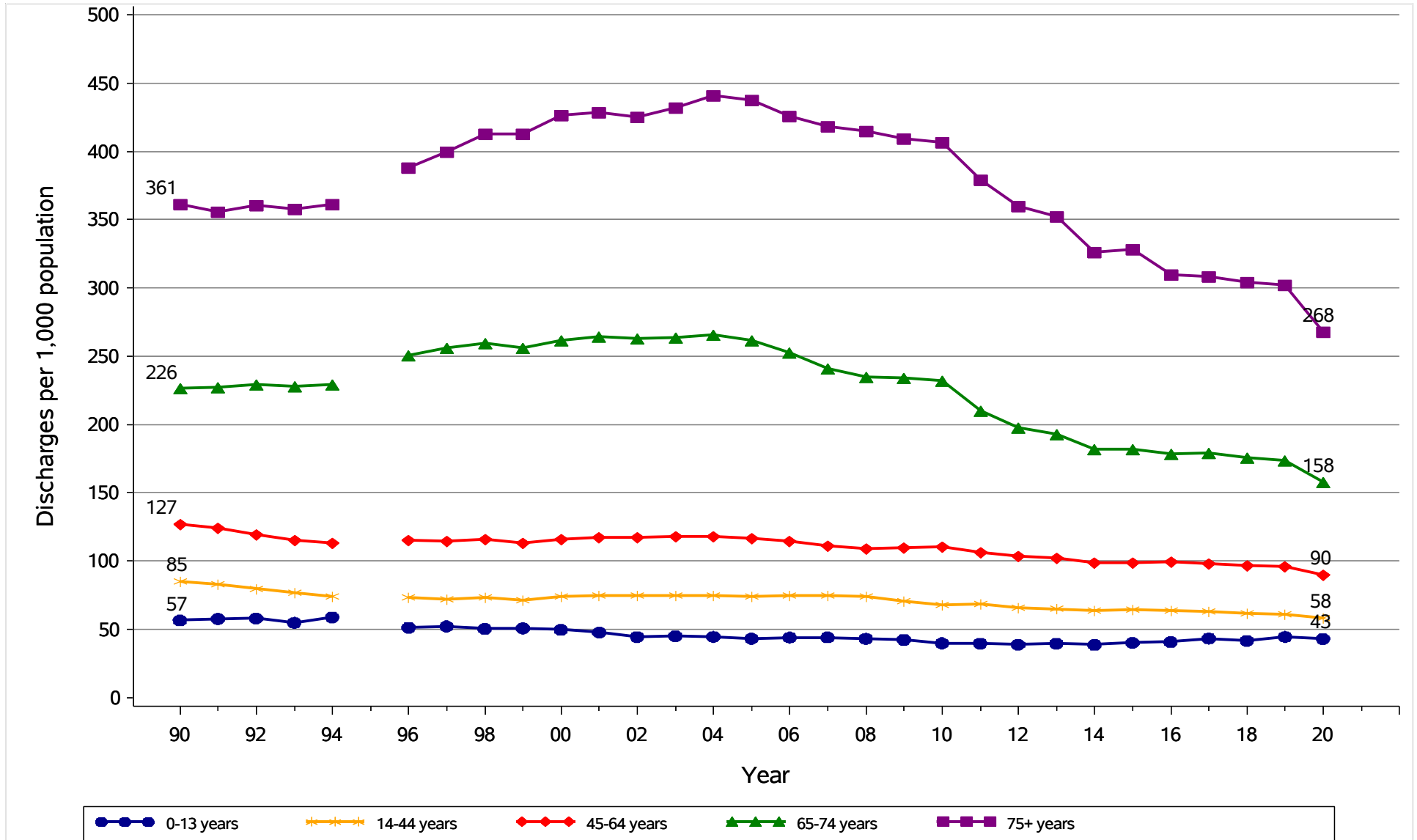
Source: NCHA (20), IBM Watson Health (96-19) and NC Medical Database Commission (90-94). 1995 not reported.
Population data from NC Office of State Planning. No Normal Newborns, NC residents only. Produced by Sheps Center at UNC.

NC Acute Care Hospital Days per 1,000 Population, 1990-2020



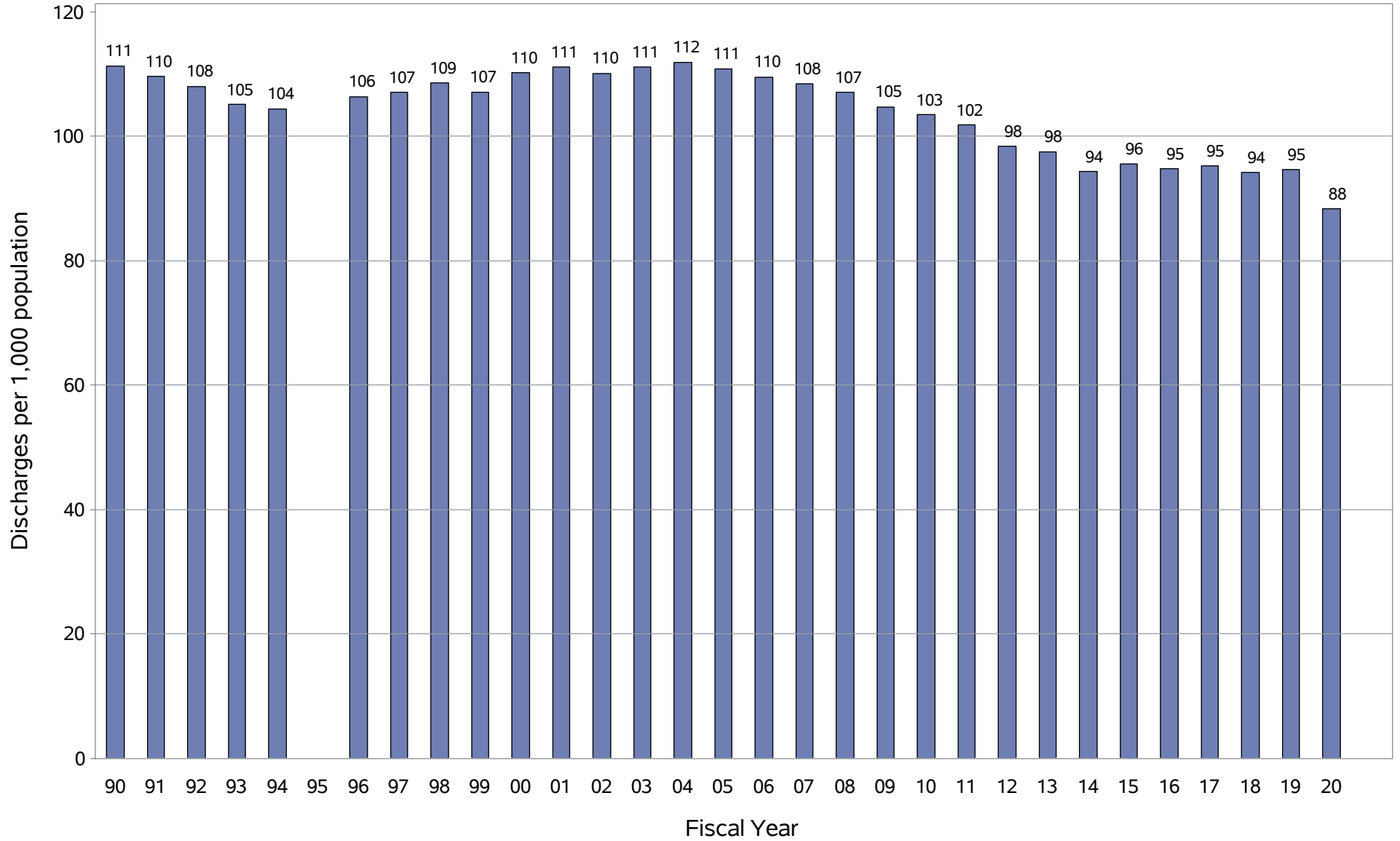
Source: NCHA (20), IBM Watson Health (96-19) and NC Medical Database Commission (90-94). 1995 not reported.
Population data from NC Office of State Planning. No Normal Newborns, NC residents only. Produced by Sheps Center at UNC.

NC Acute Care Hospital Discharges per 1,000 population October 1, 1989 to September 30, 2020



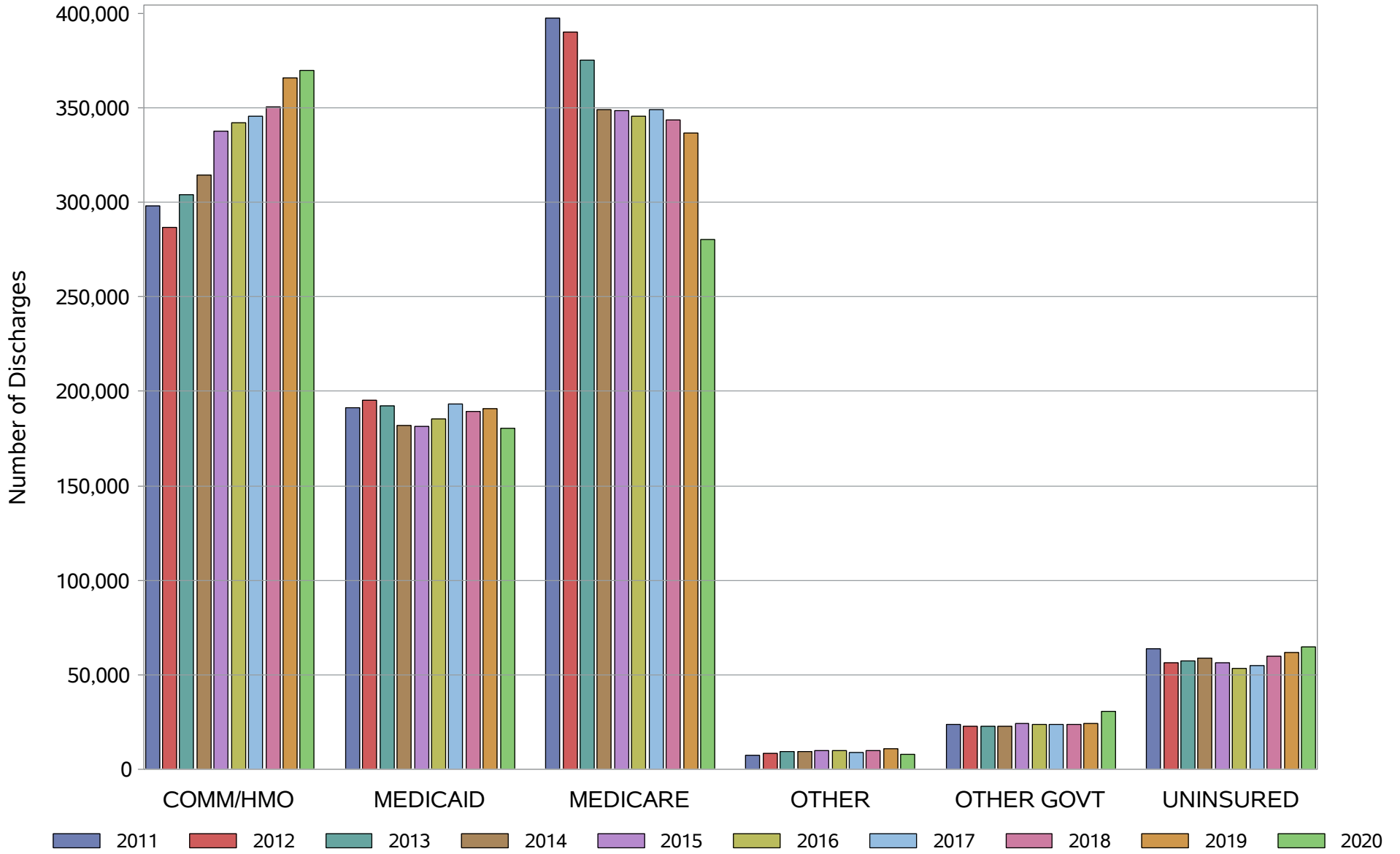
Source: NCHA (20), IBM Watson Health (96-19) and NC Medical Database Commission (90-94). 1995 not reported.
Population data from NC Office of State Planning. No Normal Newborns, NC residents only. Produced by Sheps Center at UNC.

NC Acute Care Hospital Discharges per 1,000 Population, 1990-2020



Source: NCHA (20), IBM Watson Health (96-19) and NC Medical Database Commission (90-94). 1995 not reported.
Population data from NC Office of State Planning. No Normal Newborns, NC residents only. Produced by Sheps Center at UNC.

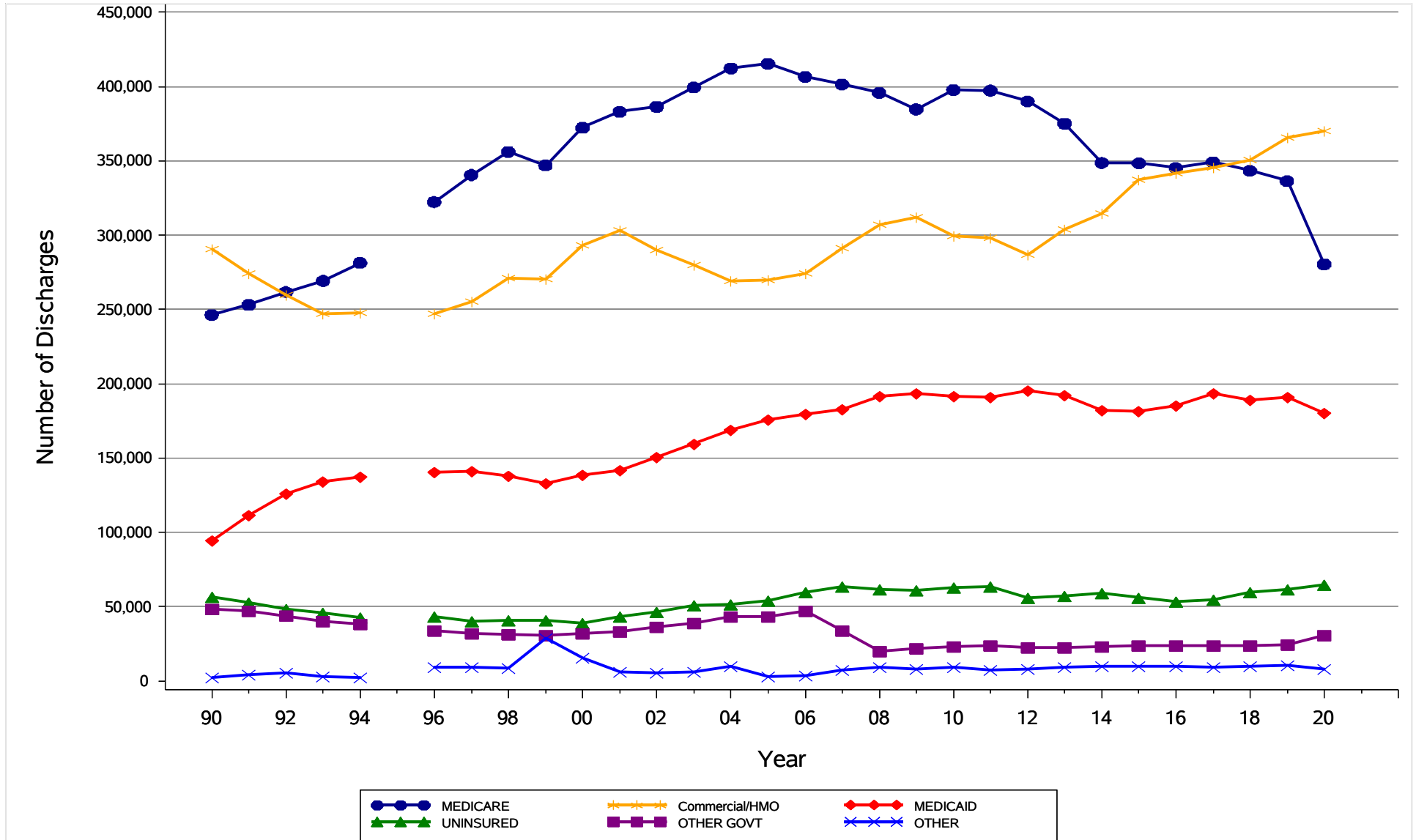
NC Acute Care Hospital Discharges, Payer Changes FY2011-FY2020



Source: NCHA (20), IBM Watson Health (11-19). No Normal Newborns, NC residents only. Produced by Sheps Center at UNC.

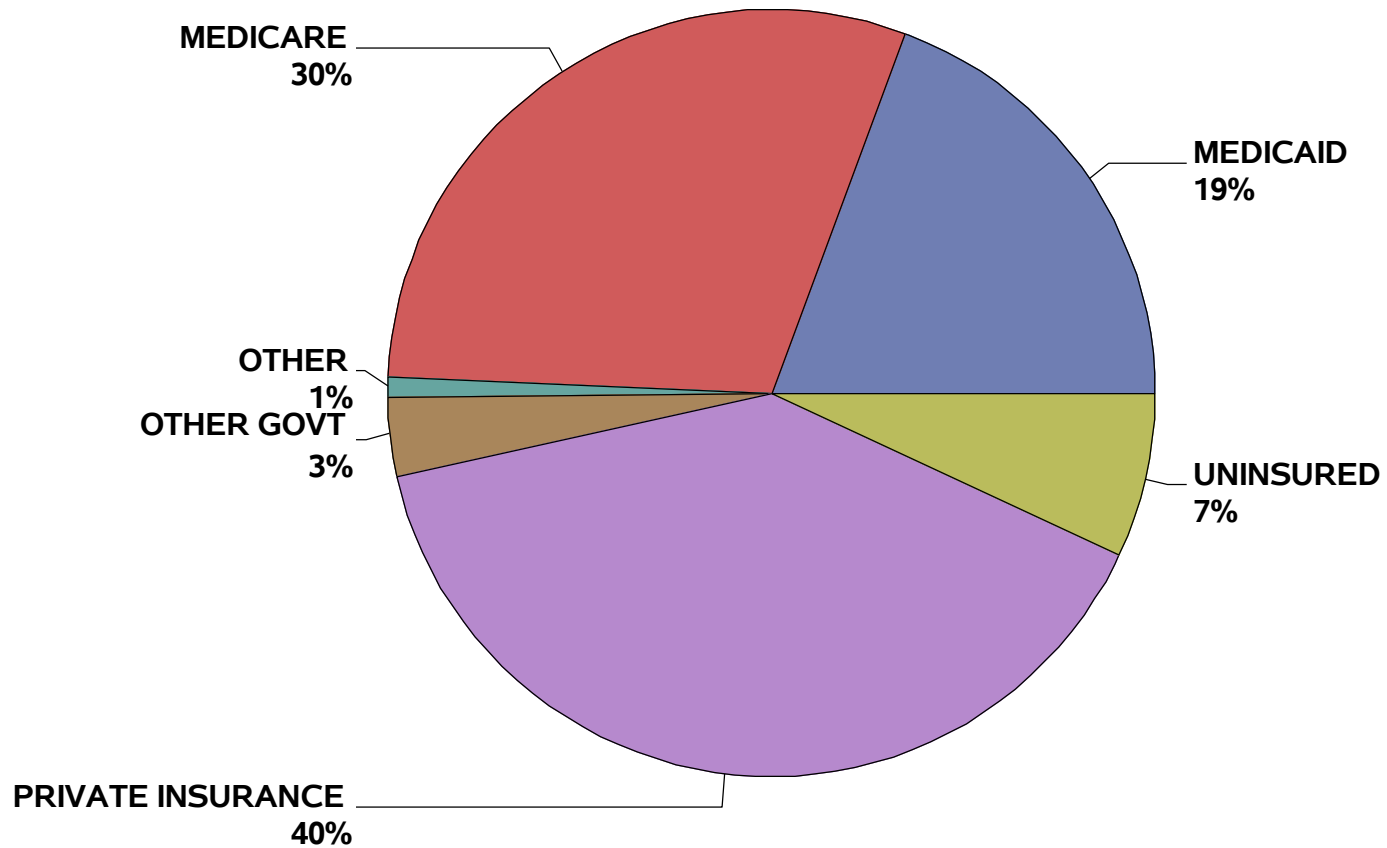
NC Acute Care Hospital Discharges, Payer Distribution

October 1, 1989 to September 30, 2020



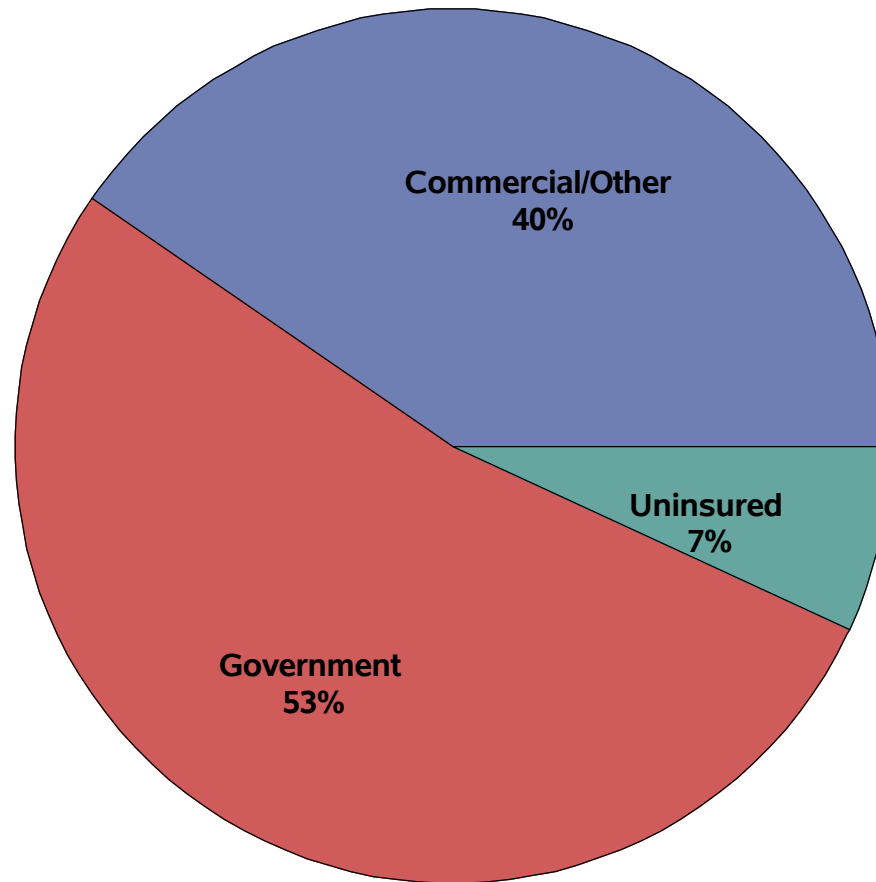
Source: NCHA (20), IBM Watson Health (96-19) and NC Medical Database Commission (90-94). 1995 not reported.
 Population data from NC Office of State Planning. No Normal Newborns, NC residents only. Produced by Sheps Center at UNC.

NC Acute Care Hospital Discharges by Payer
October 1, 2019 to September 30, 2020



Source: NCHA. No Normal Newborns, NC residents only.
Produced by Sheps Center at UNC.

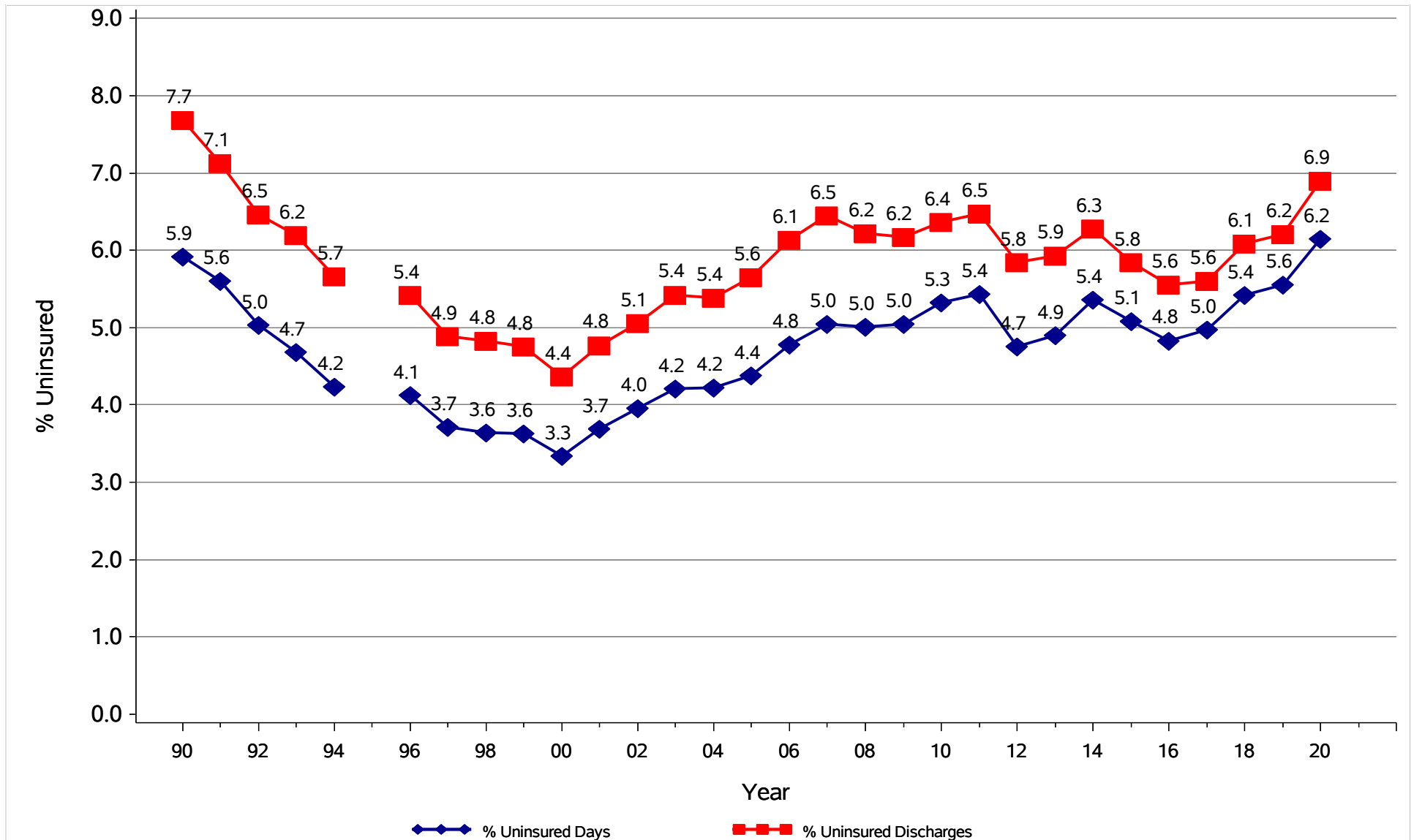
NC Acute Care Hospital Discharges by Payer
October 1, 2019 to September 30, 2020



Source: NCHA. No Normal Newborns, NC residents only.
Produced by Sheps Center at UNC.

NC Uninsured Discharges and Days as Percent of Total

October 1, 1989 to September 30, 2020



Source: NCHA (20), IBM Watson Health (96-19) and NC Medical Database Commission (90-94). 1995 not reported.
 Population data from NC Office of State Planning. No Normal Newborns, NC residents only. Produced by Sheps Center at UNC.