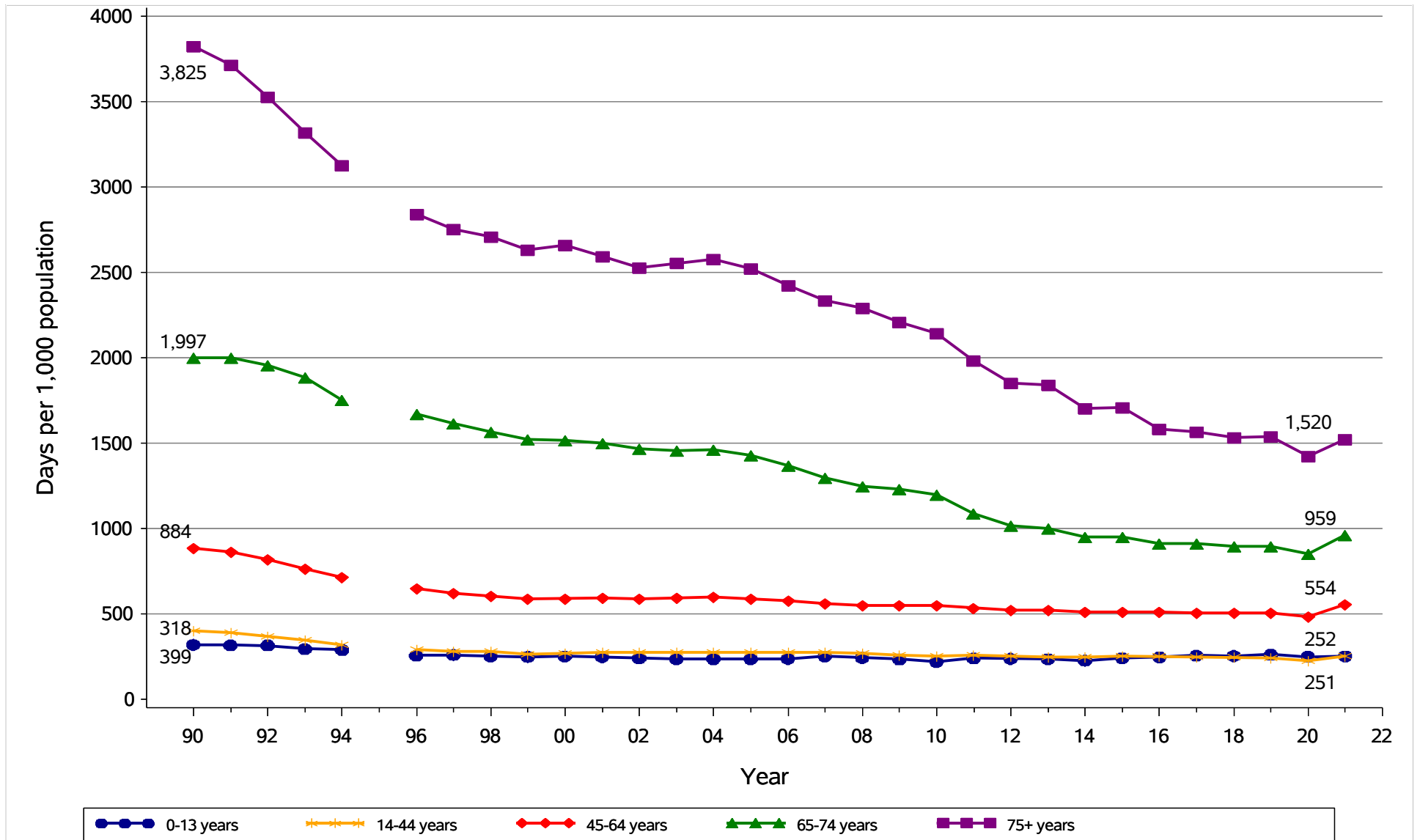


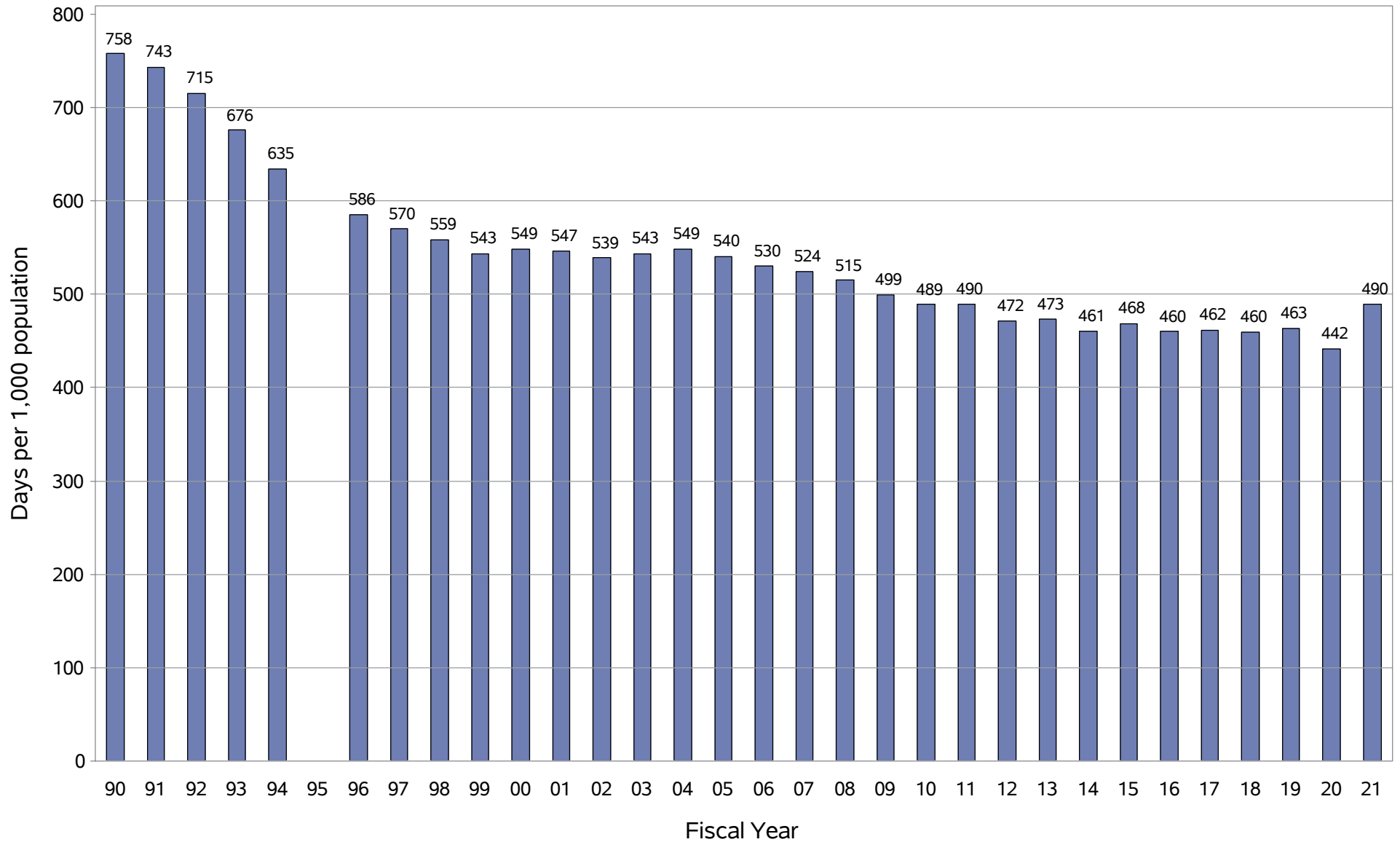
# NC Acute Care Hospital Days per 1,000 population

October 1, 1989 to September 30, 2021



Source: NCHA (20-21), IBM Watson Health (96-19) and NC Medical Database Commission (90-94). 1995 not reported. Population data from NC Office of State Planning. No Normal Newborns, NC residents only. Produced by Sheps Center at UNC.

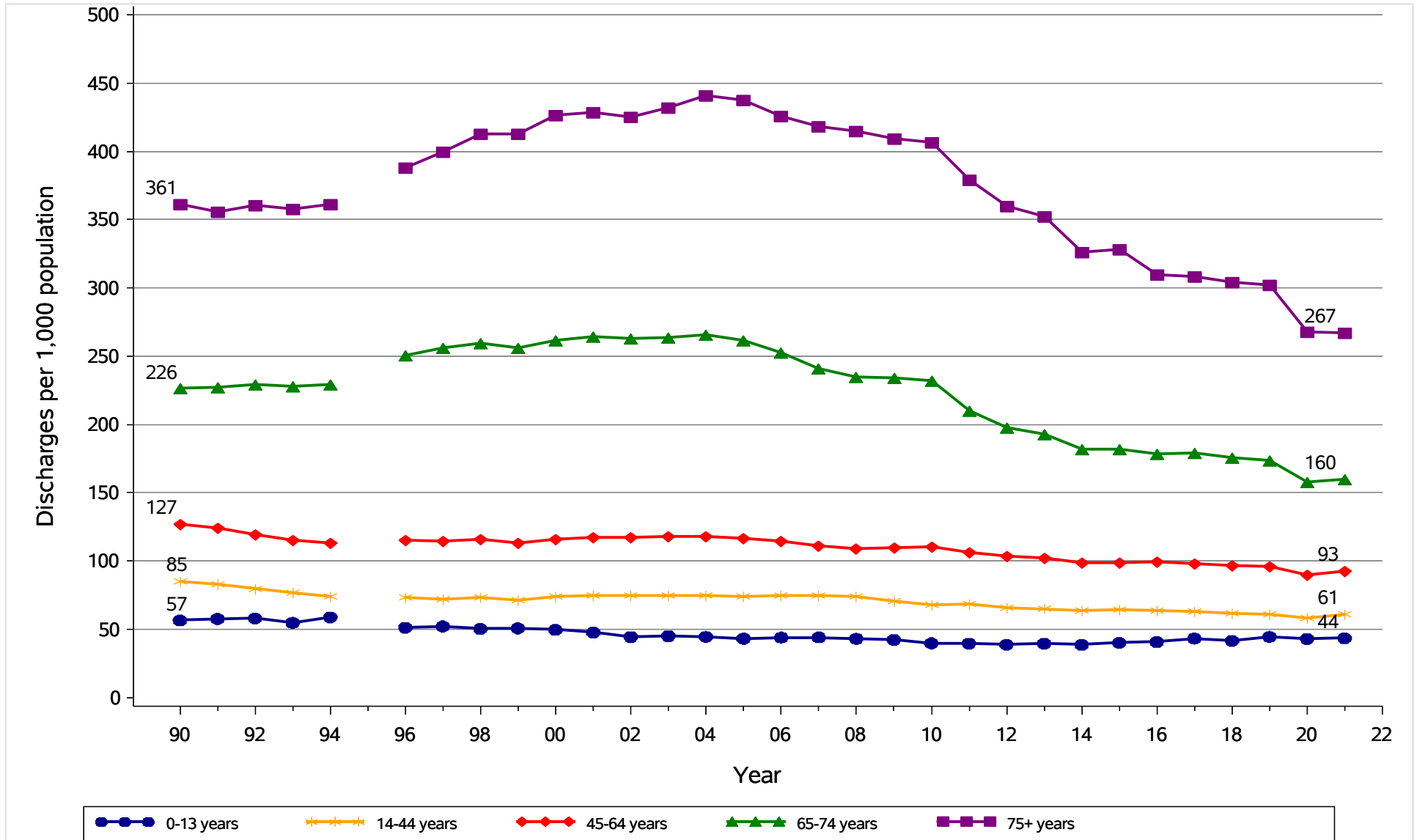
## NC Acute Care Hospital Days per 1,000 Population, 1990-2021



Source: NCHA (20-21), IBM Watson Health (96-19) and NC Medical Database Commission (90-94). 1995 not reported.  
Population data from NC Office of State Planning. No Normal Newborns, NC residents only. Produced by Sheps Center at UNC.

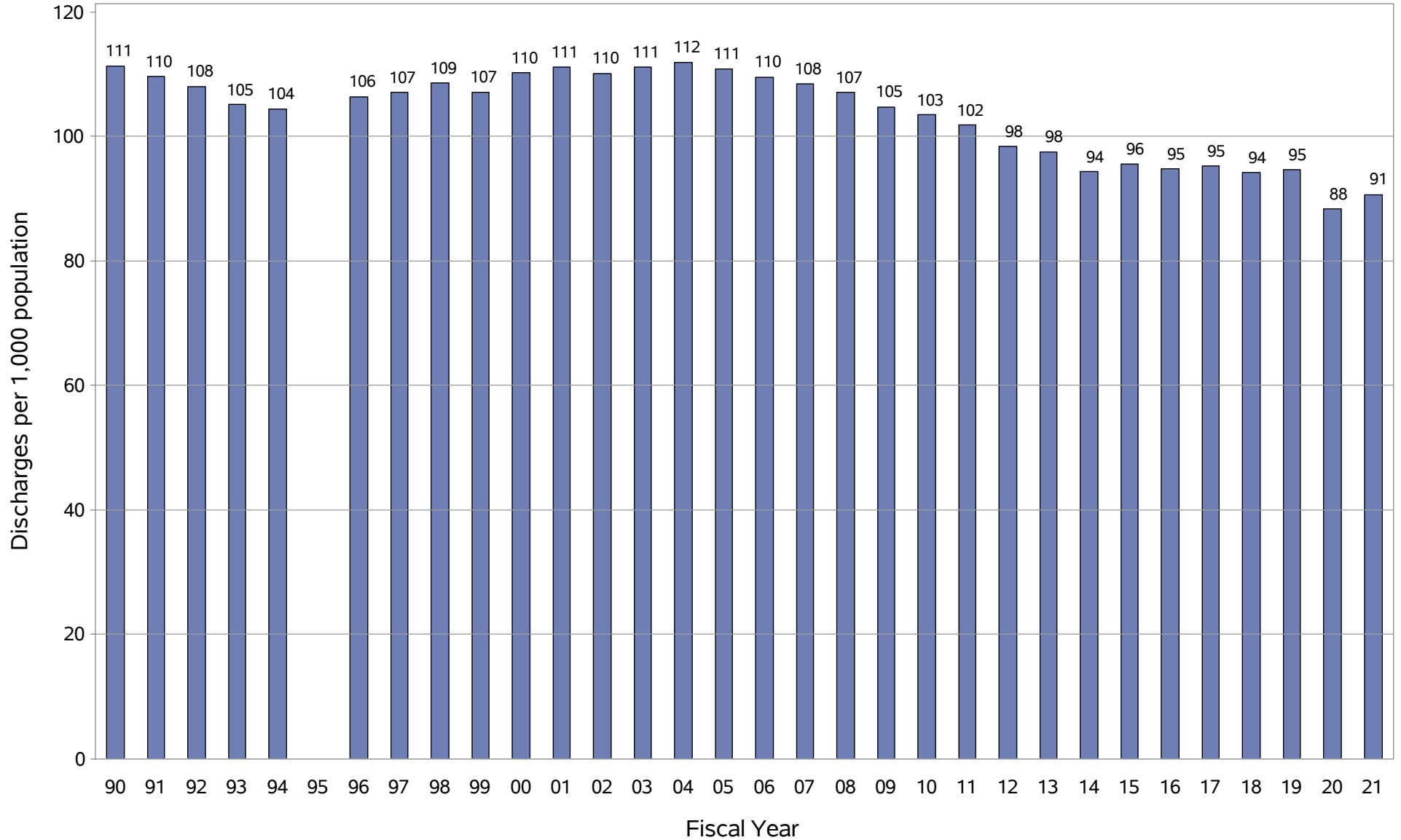
## NC Acute Care Hospital Discharges per 1,000 population

### October 1, 1989 to September 30, 2021



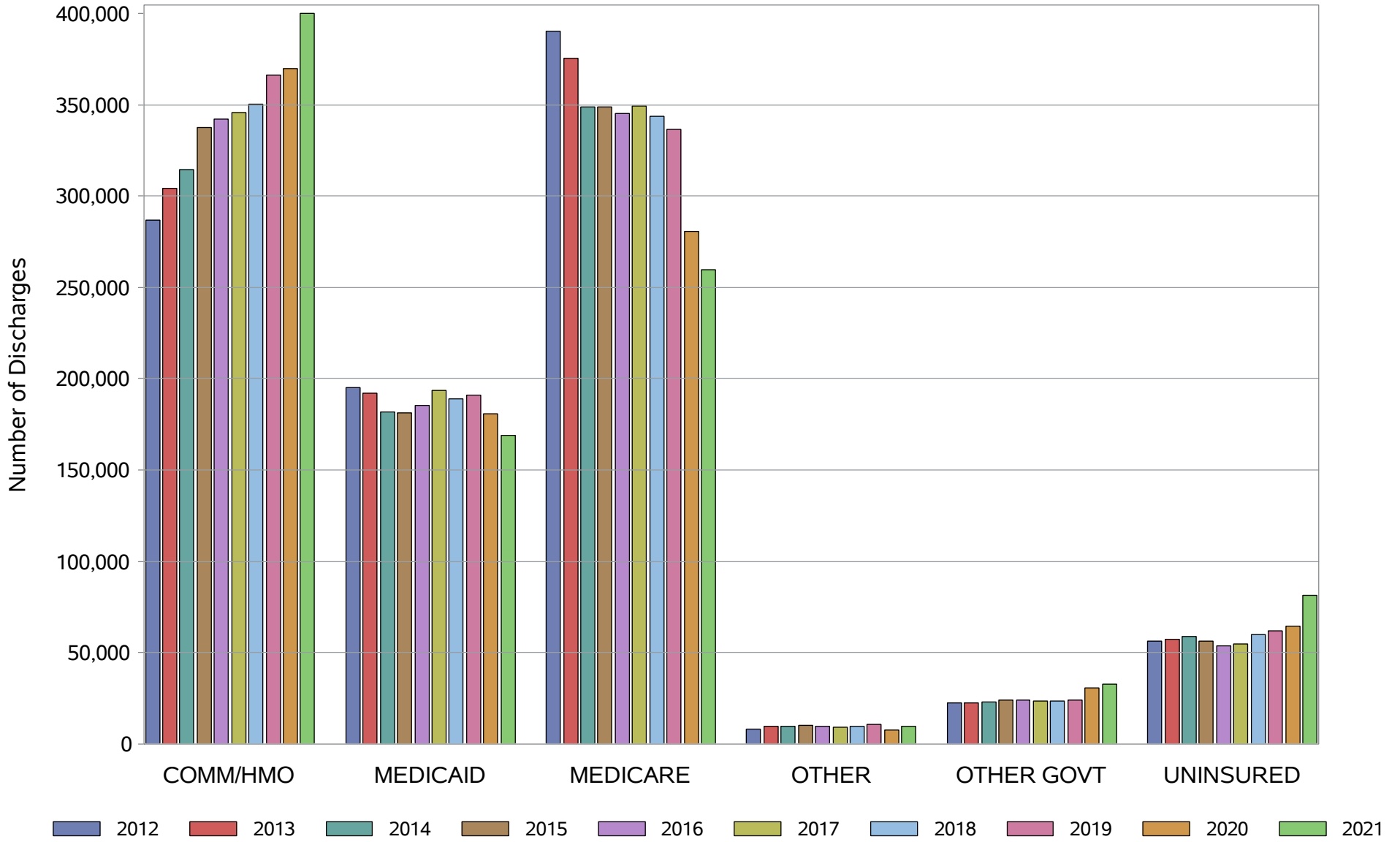
Source: NCHA (20-21), IBM Watson Health (96-19) and NC Medical Database Commission (90-94). 1995 not reported.  
 Population data from NC Office of State Planning. No Normal Newborns, NC residents only. Produced by Sheps Center at UNC.

## NC Acute Care Hospital Discharges per 1,000 Population, 1990-2021



Source: NCHA (20-21), IBM Watson Health (96-19) and NC Medical Database Commission (90-94). 1995 not reported.  
Population data from NC Office of State Planning. No Normal Newborns, NC residents only. Produced by Sheps Center at UNC.

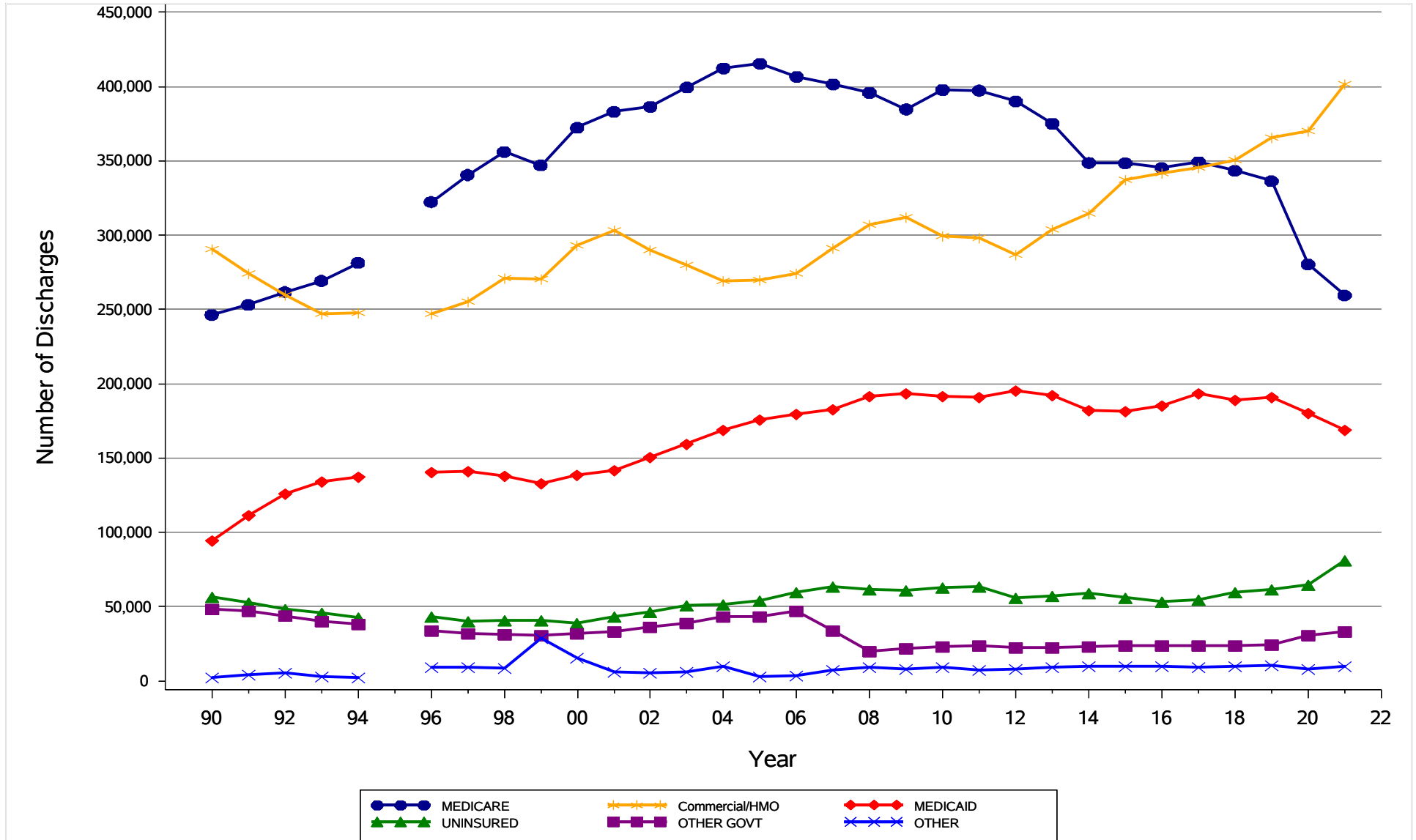
## NC Acute Care Hospital Discharges, Payer Changes FY2012-FY2021



Source: NCHA (20-21), IBM Watson Health (11-19). No Normal Newborns, NC residents only. Produced by Sheps Center at UNC.

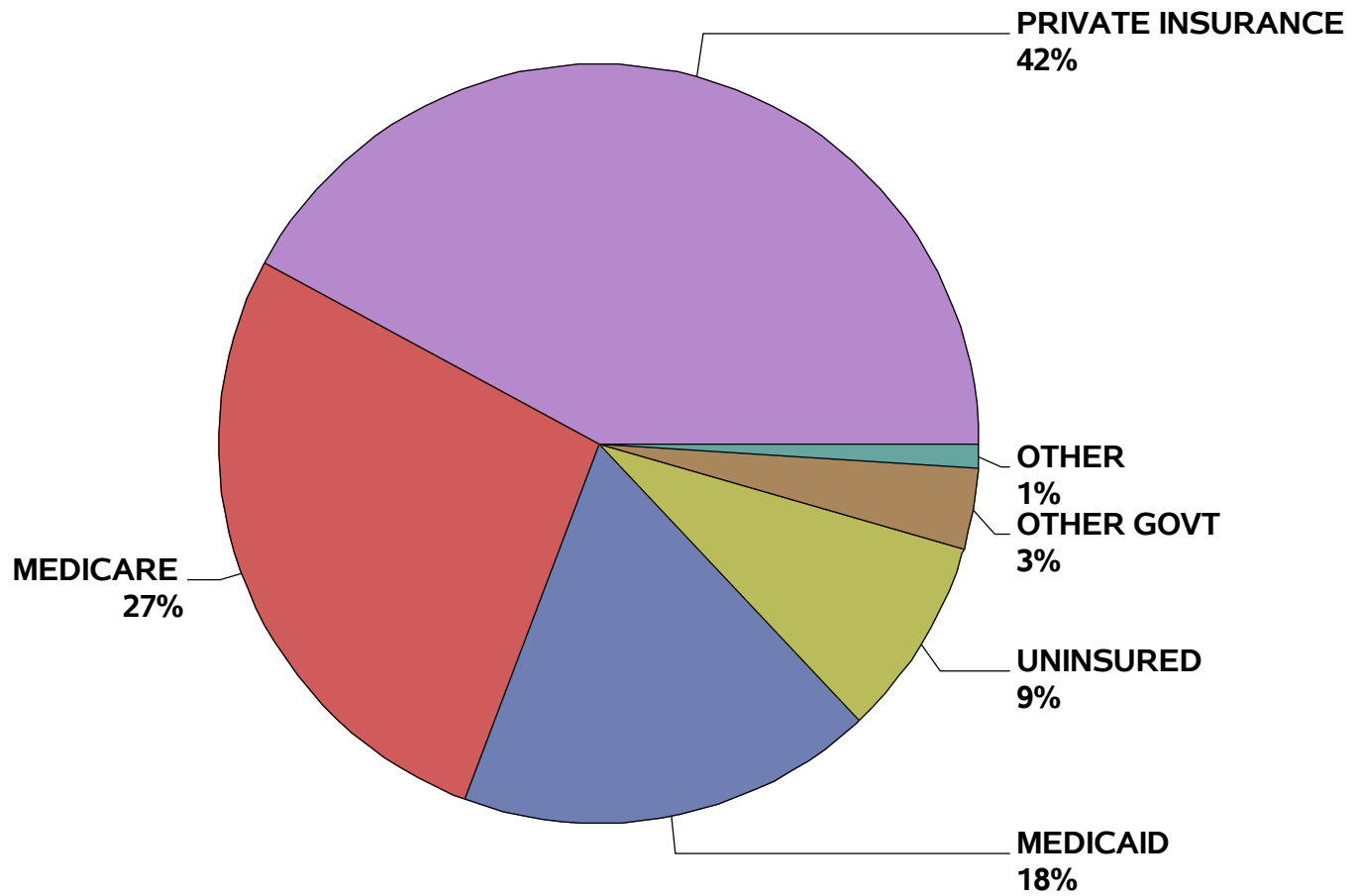
# NC Acute Care Hospital Discharges, Payer Distribution

October 1, 1989 to September 30, 2021



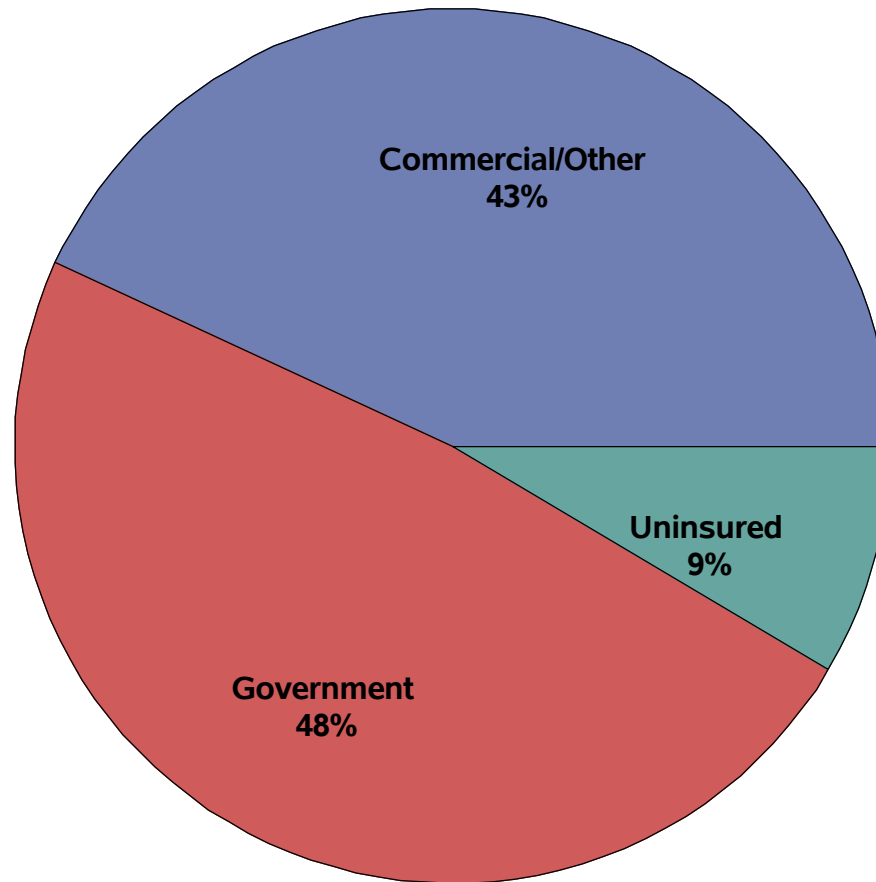
Source: NCHA (20-21), IBM Watson Health (96-19) and NC Medical Database Commission (90-94). 1995 not reported.  
 Population data from NC Office of State Planning. No Normal Newborns, NC residents only. Produced by Sheps Center at UNC.

**NC Acute Care Hospital Discharges by Payer**  
**October 1, 2020 to September 30, 2021**



Source: NCHA. No Normal Newborns, NC residents only.  
Produced by Sheps Center at UNC.

**NC Acute Care Hospital Discharges by Payer**  
**October 1, 2020 to September 30, 2021**

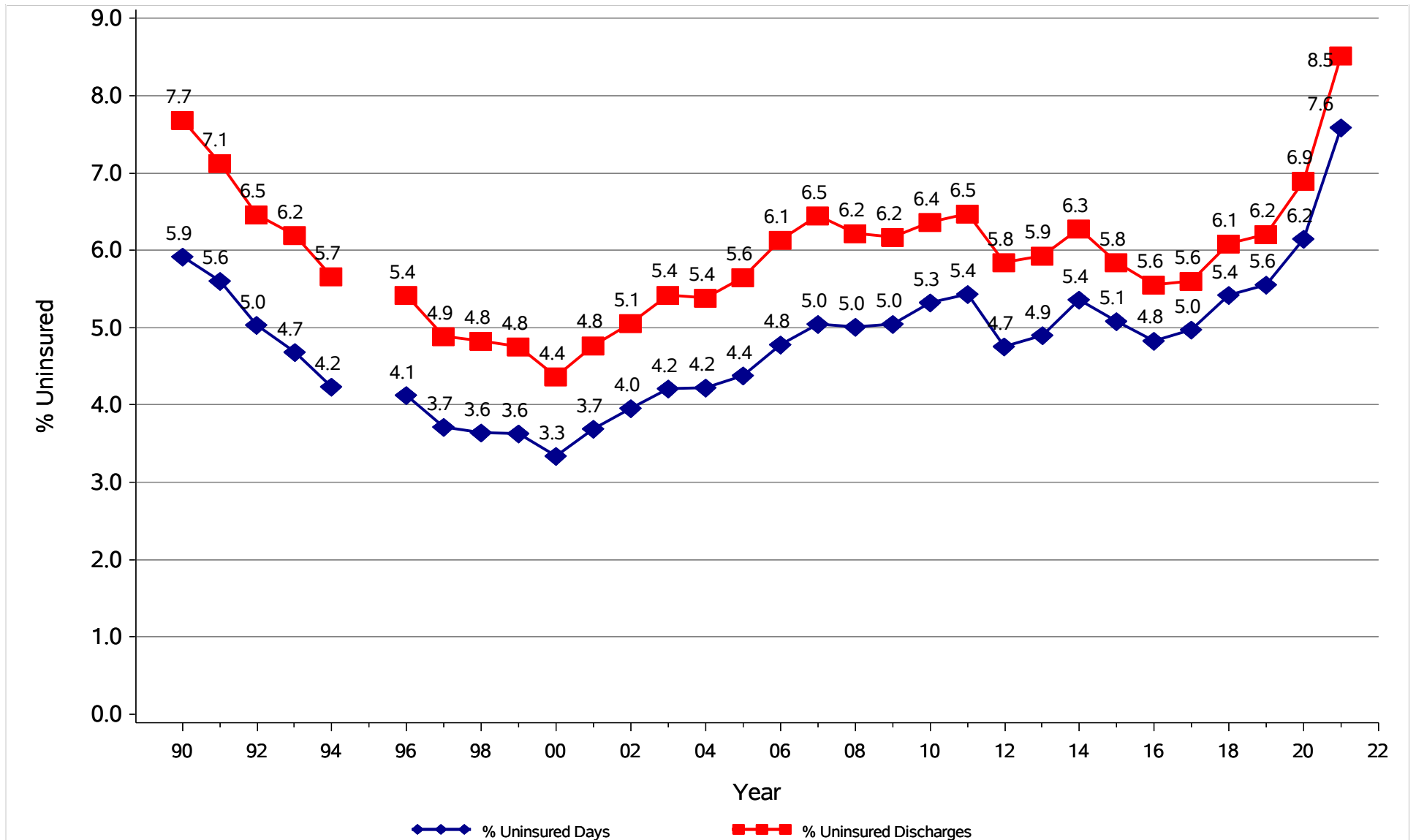


Source: NCHA. No Normal Newborns, NC residents only.  
Produced by Sheps Center at UNC.



# NC Uninsured Discharges and Days as Percent of Total

October 1, 1989 to September 30, 2021



Source: NCHA (20-21), IBM Watson Health (96-19) and NC Medical Database Commission (90-94). 1995 not reported. Population data from NC Office of State Planning. No Normal Newborns, NC residents only. Produced by Sheps Center at UNC.