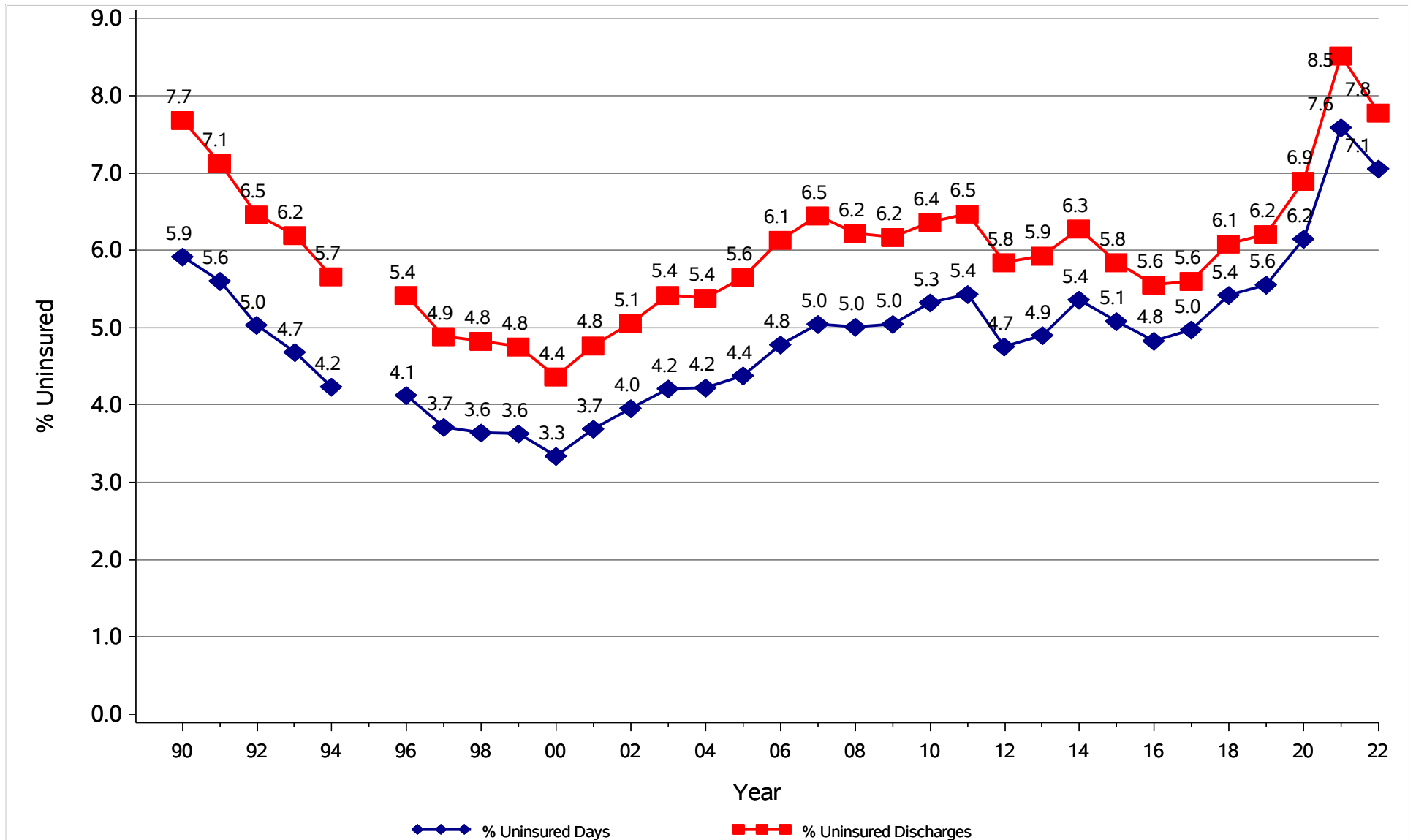


NC Uninsured Discharges and Days as Percent of Total

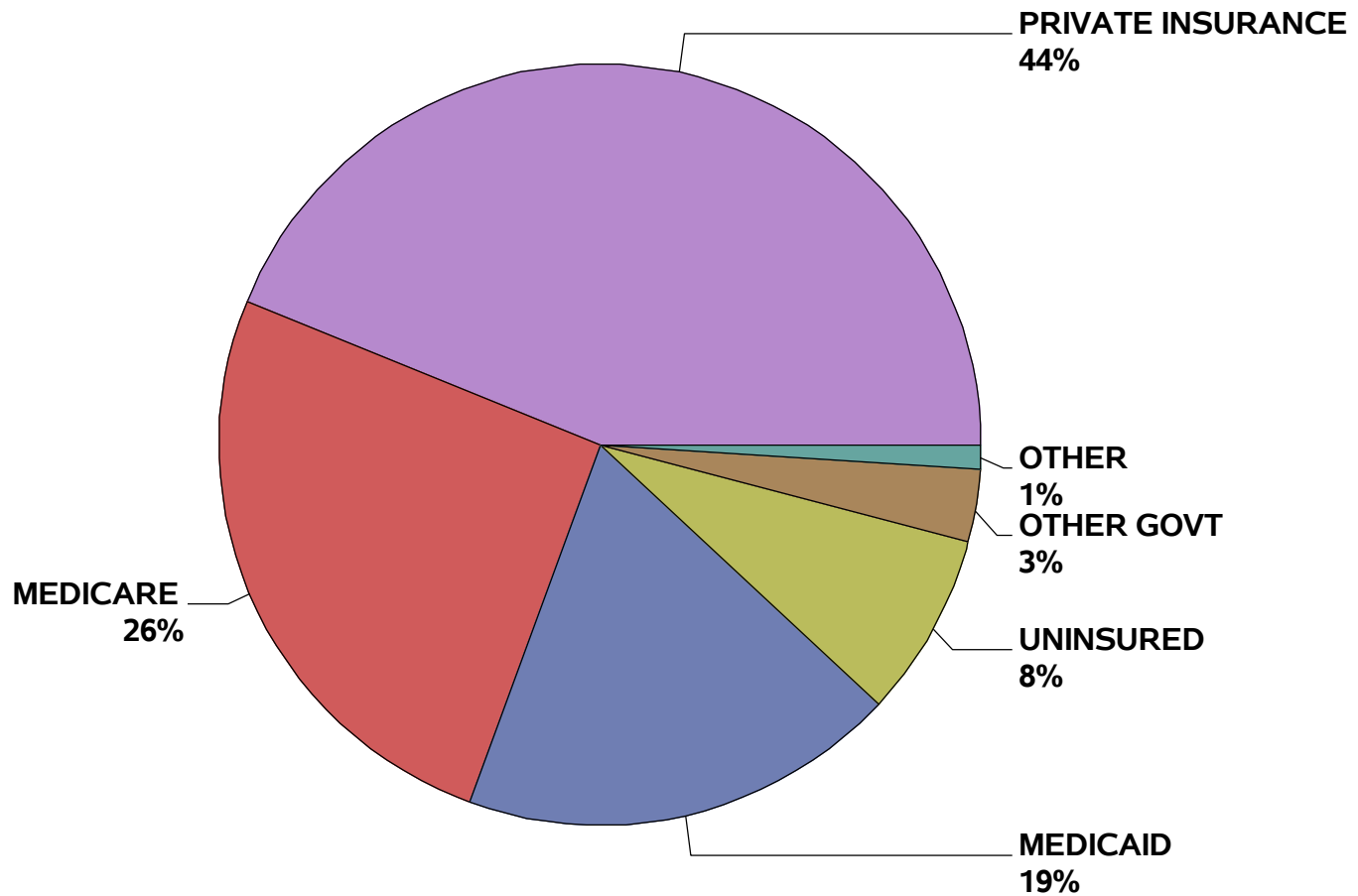
October 1, 1989 to September 30, 2022



Source: NCHA (20-22), IBM Watson Health (96-19) and NC Medical Database Commission (90-94). 1995 not reported. Population data from NC Office of State Planning. No Normal Newborns, NC residents only. Produced by Sheps Center at UNC.

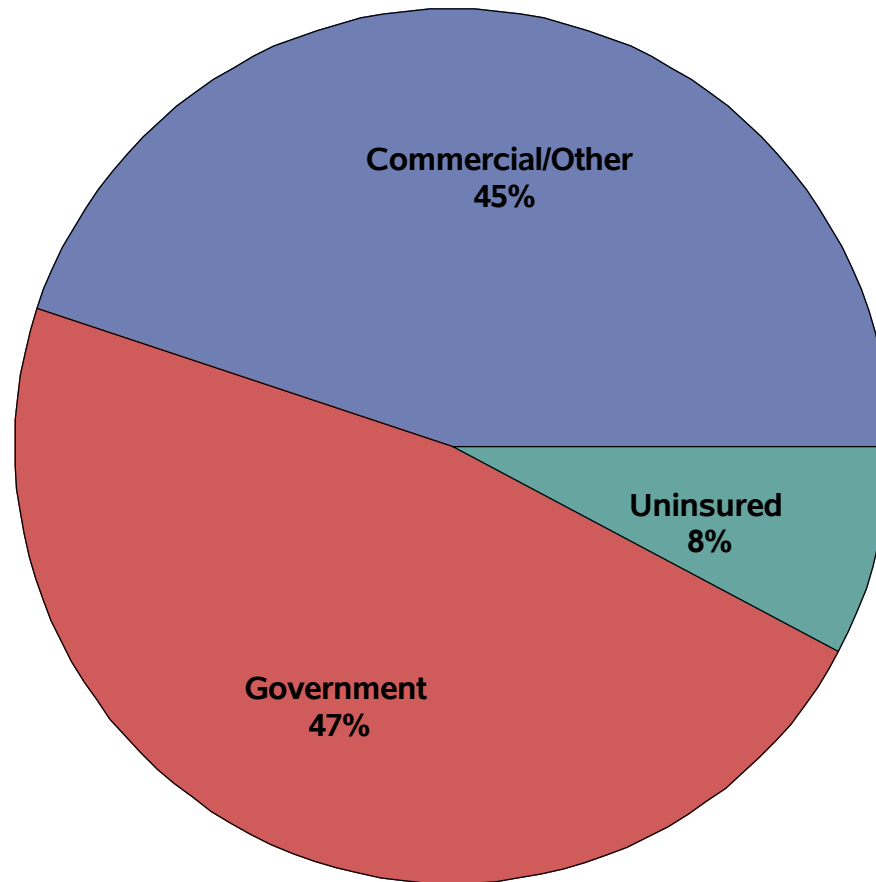
NC Acute Care Hospital Discharges by Payer

October 1, 2021 to September 30, 2022



Source: NCHA. No Normal Newborns, NC residents only.
Produced by Sheps Center at UNC.

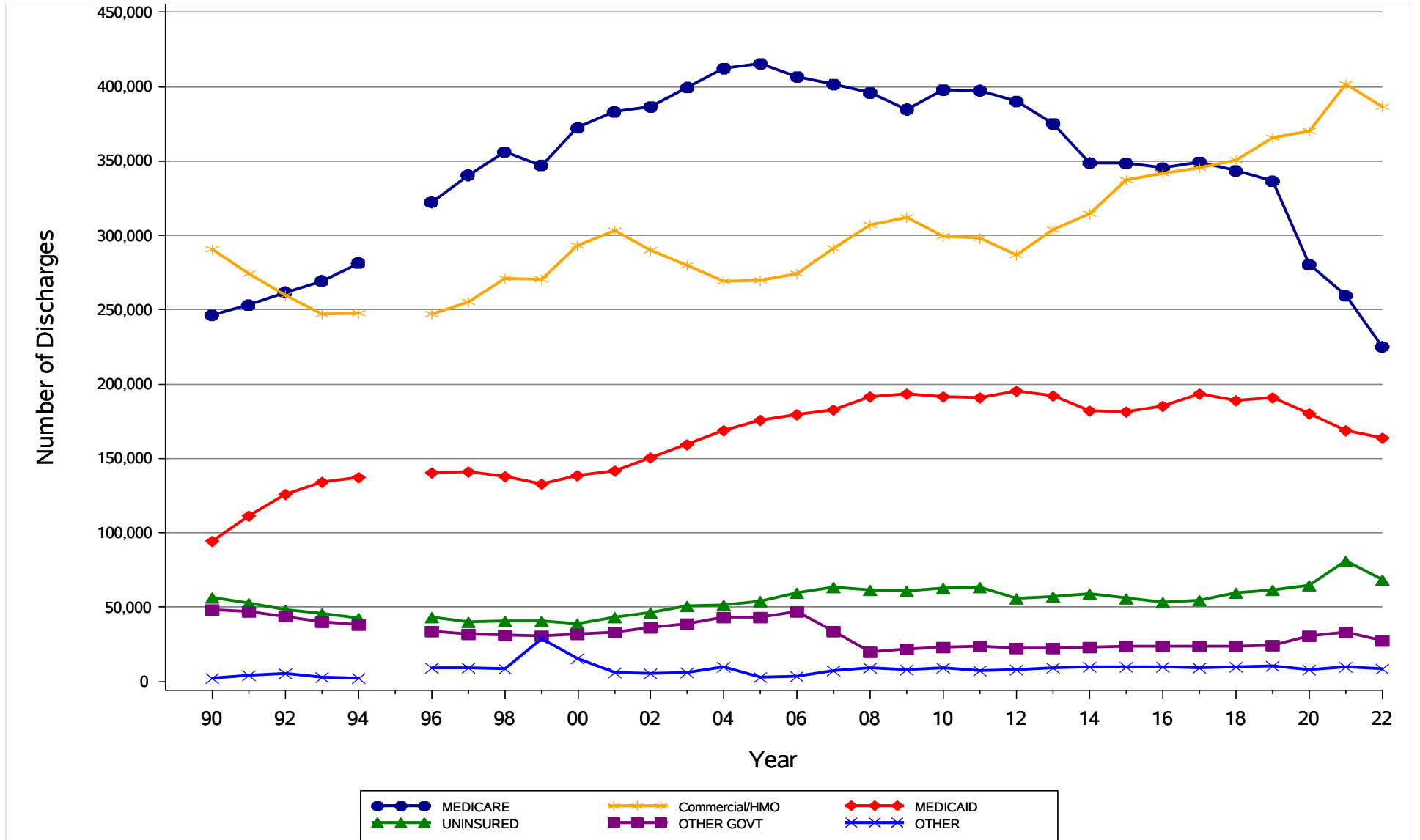
NC Acute Care Hospital Discharges by Payer
October 1, 2021 to September 30, 2022



Source: NCHA. No Normal Newborns, NC residents only.
Produced by Sheps Center at UNC.

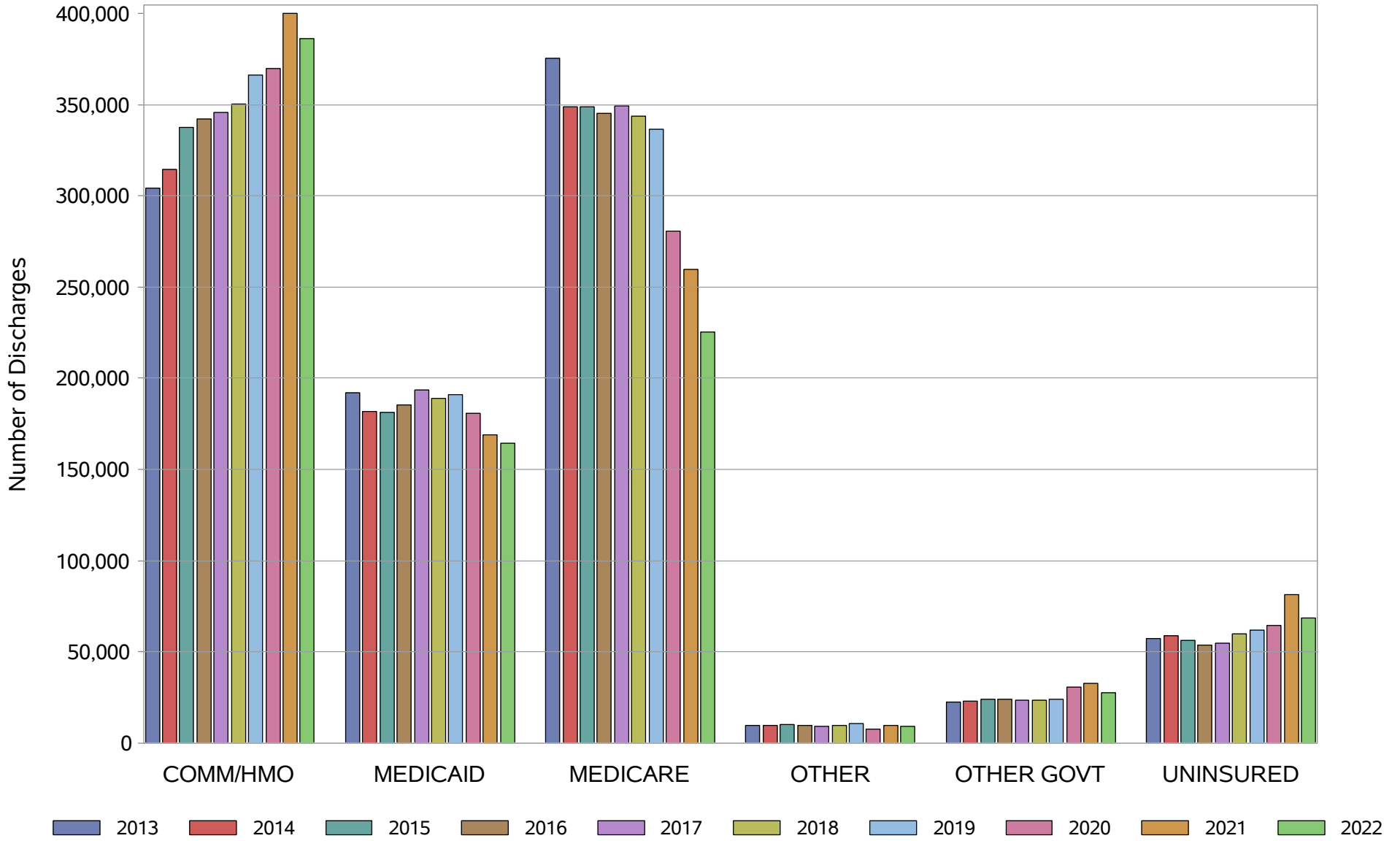
NC Acute Care Hospital Discharges, Payer Distribution

October 1, 1989 to September 30, 2022



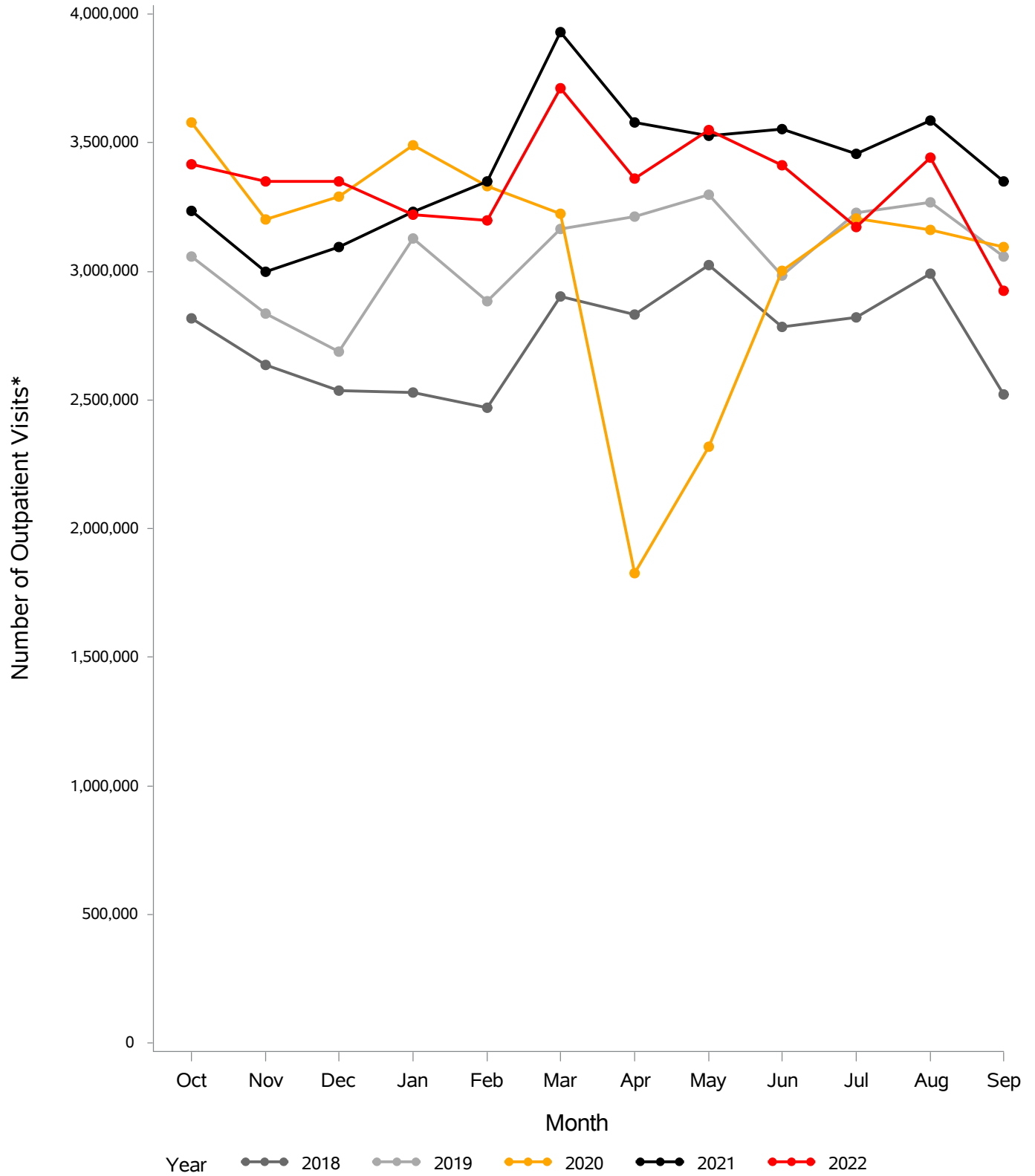
Source: NCHA (20-22), IBM Watson Health (96-19) and NC Medical Database Commission (90-94). 1995 not reported.
 Population data from NC Office of State Planning. No Normal Newborns, NC residents only. Produced by Sheps Center at UNC.

NC Acute Care Hospital Discharges, Payer Changes FY2013-FY2022



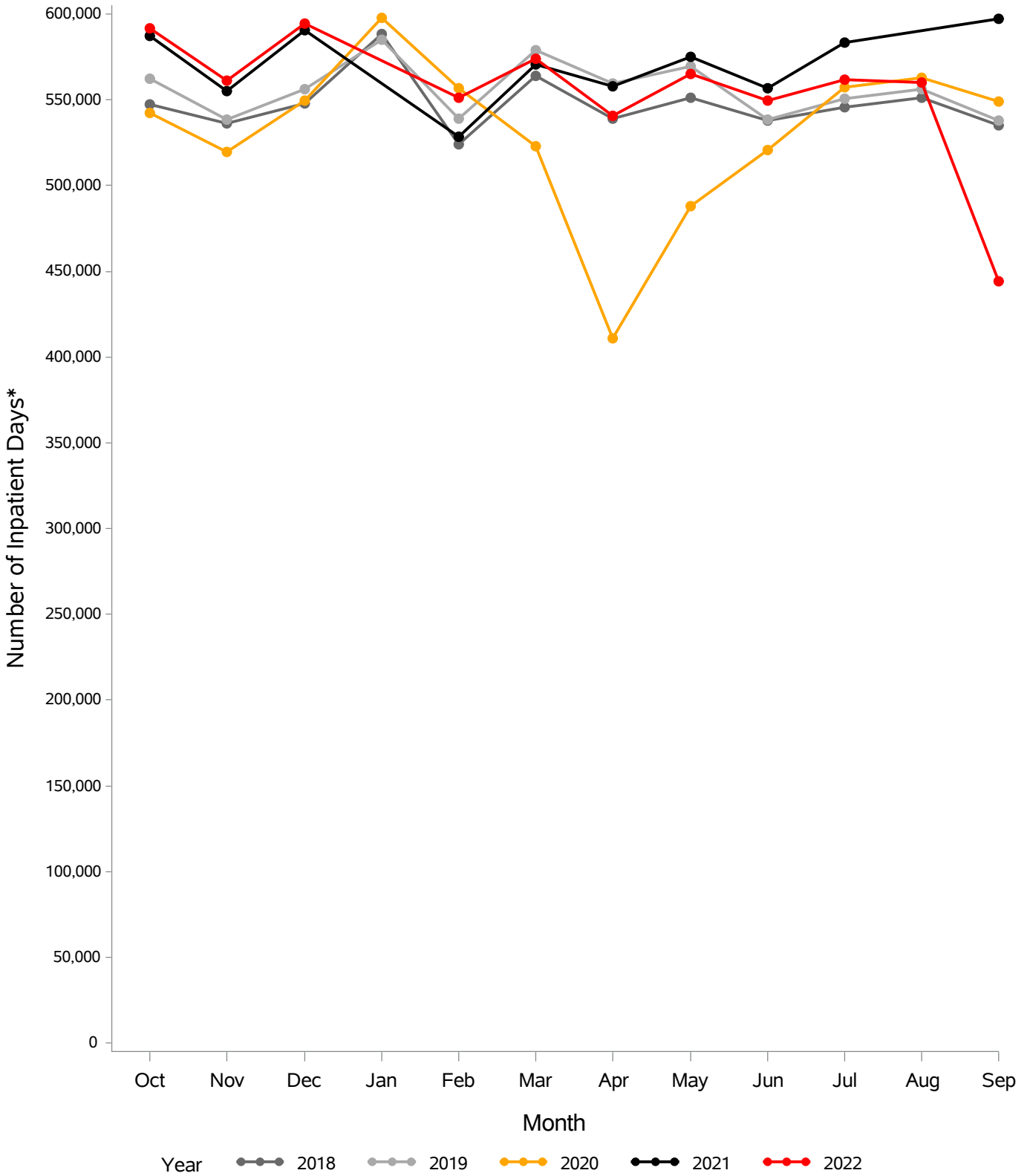
Source: NCHA (20-22), IBM Watson Health (11-19). No Normal Newborns, NC residents only. Produced by Sheps Center at UNC.

OP Visits* for All Facilities for FY 2018 - 2022



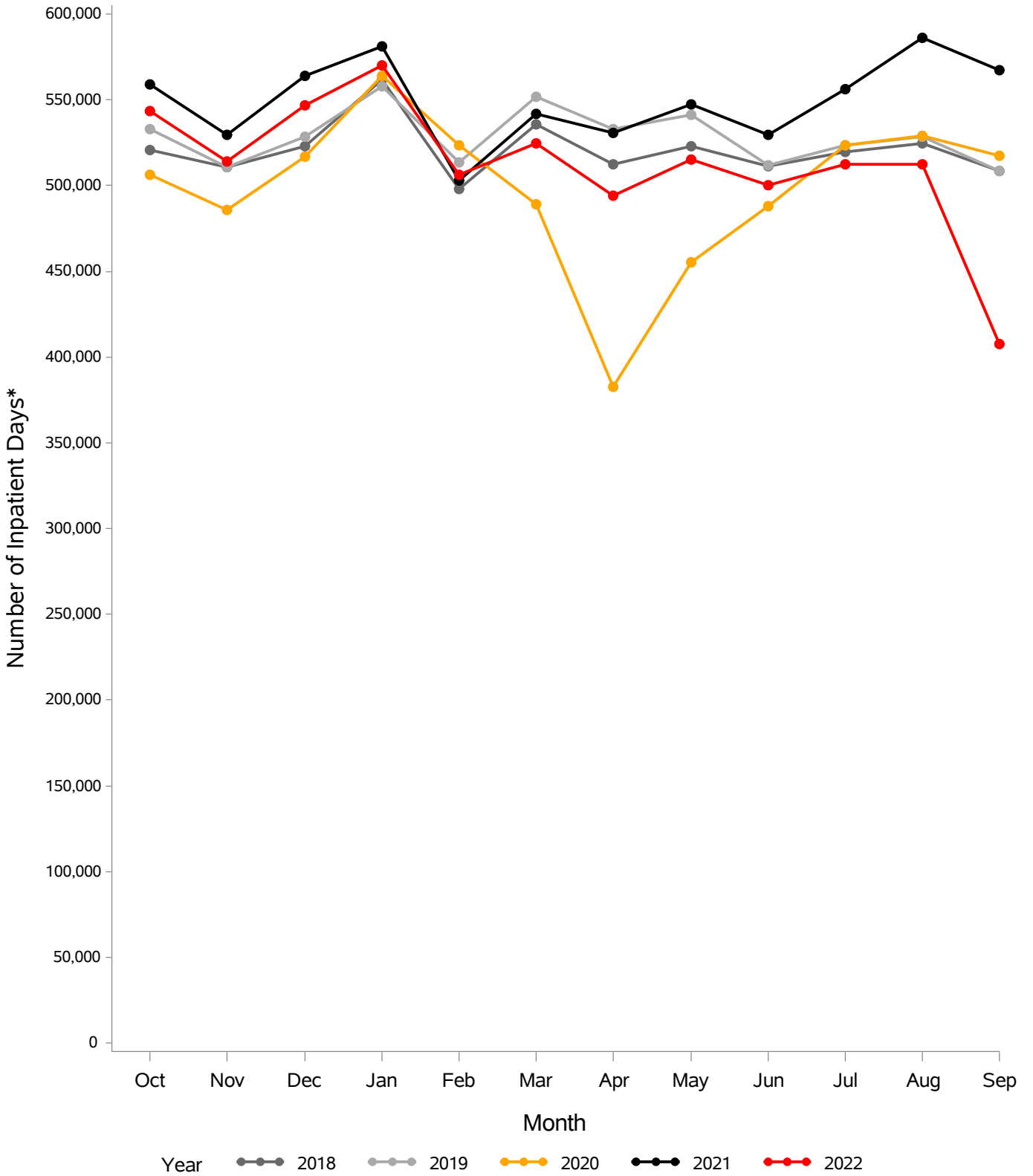
*Visits are defined as each day from the admit date to discharge date for an outpatient encounter.

IP Care Days* for All Facilities for FY 2018 - 2022



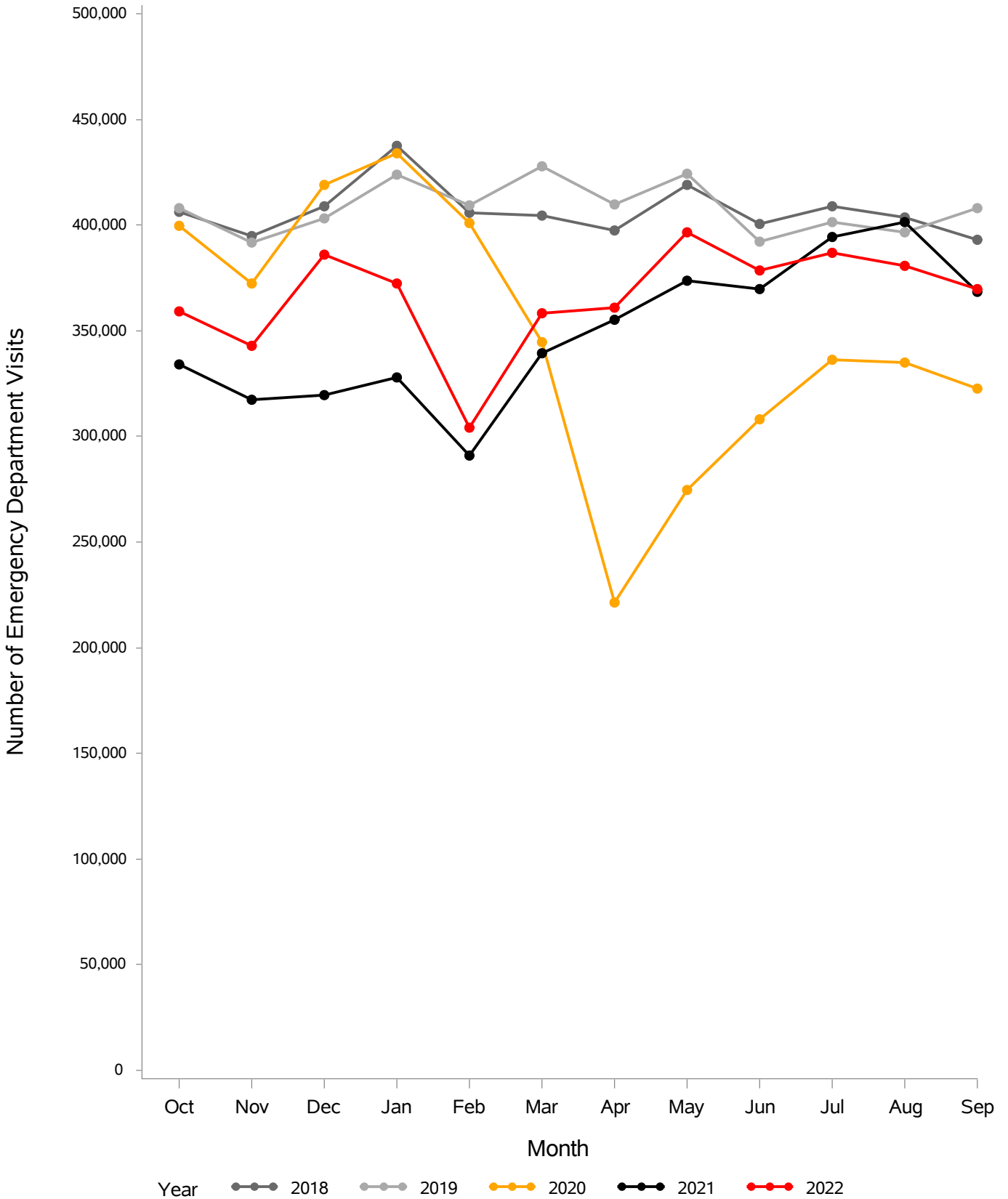
*Days are defined as each day from the admit date to discharge date for an inpatient encounter.

Acute Care Days* for Acute Facilities for FY 2018 - 2022



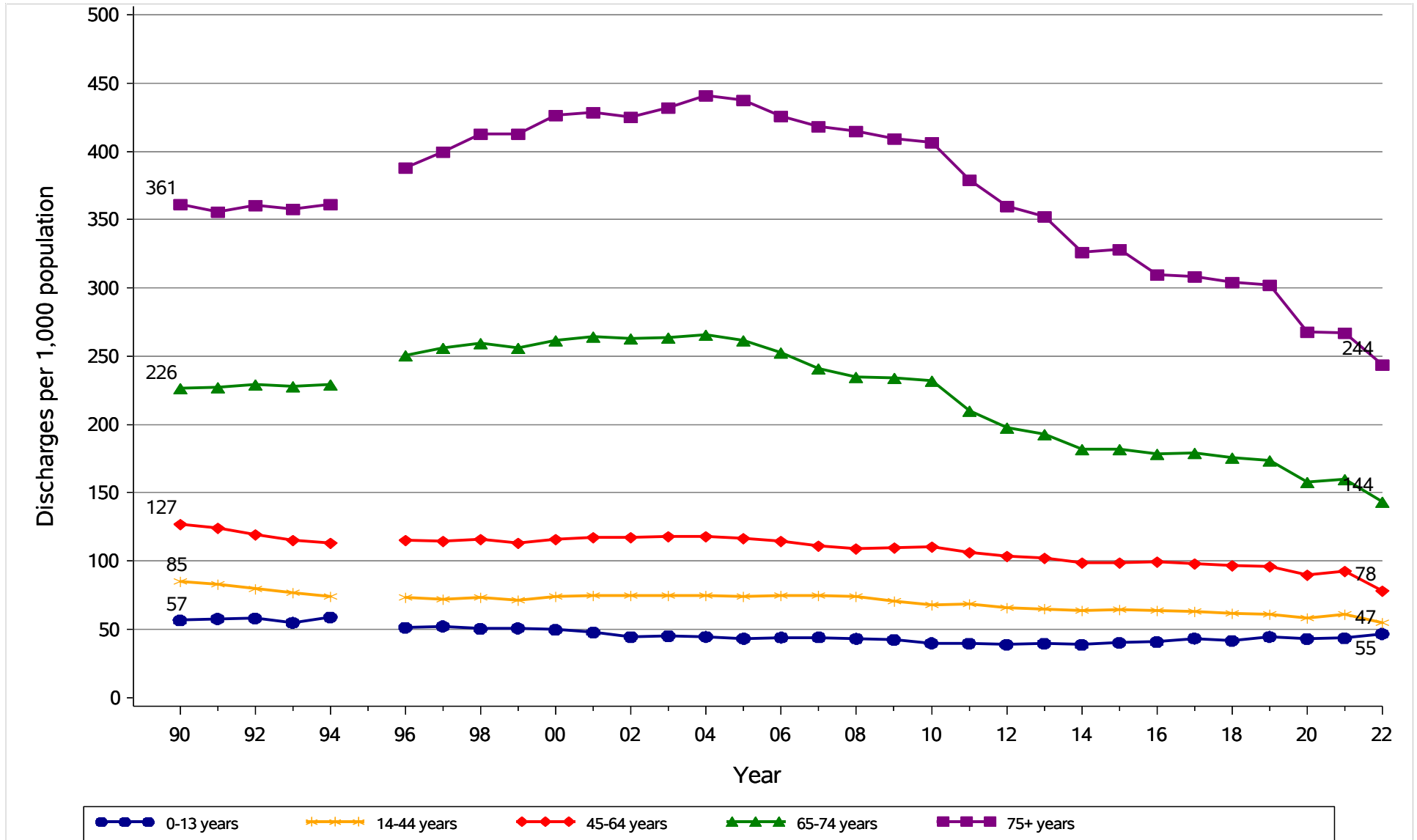
*Days are defined as each day from the admit date to discharge date for an inpatient encounter.

ED Visits for All Facilities for FY 2018 - 2022



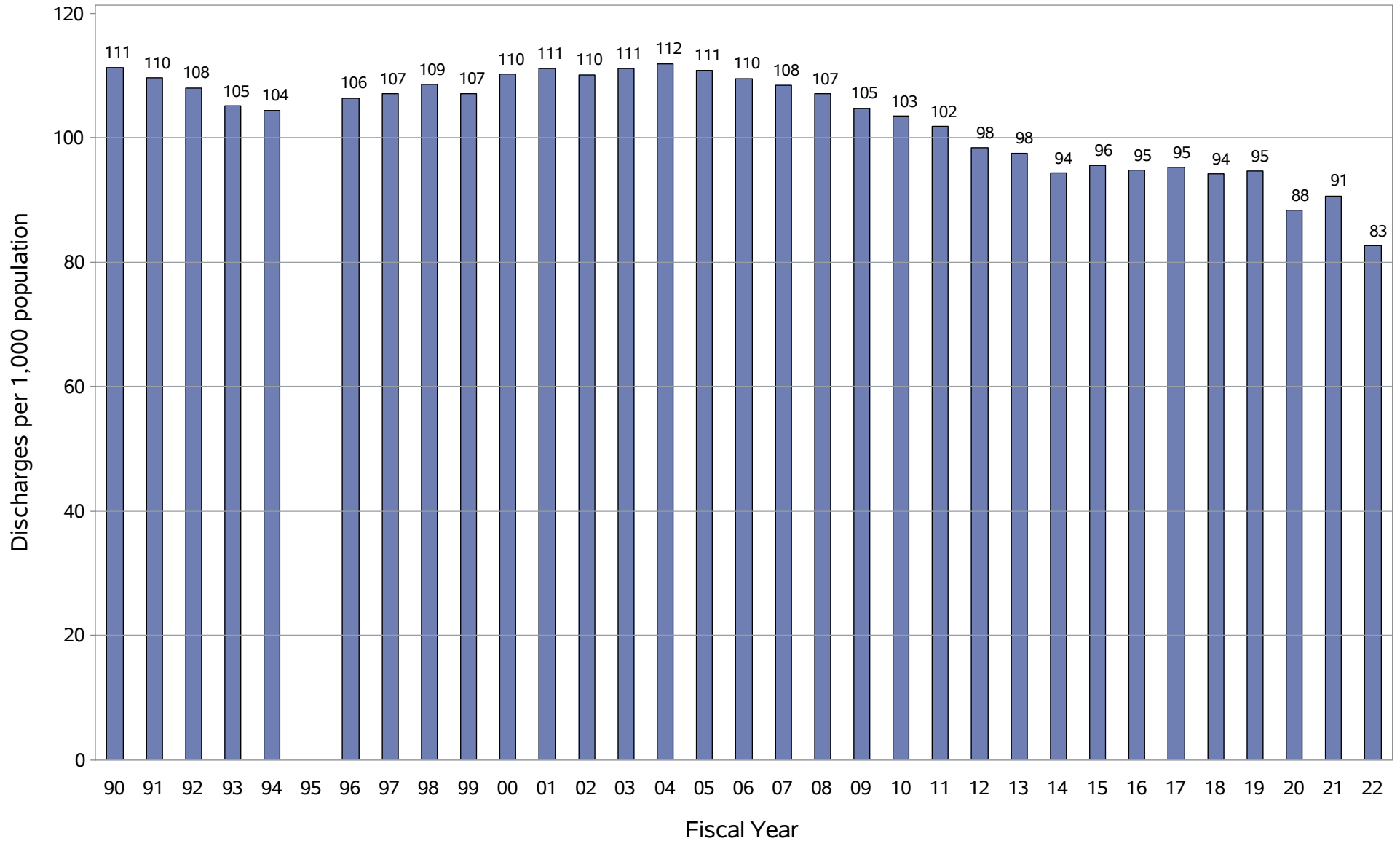
NC Acute Care Hospital Discharges per 1,000 population

October 1, 1989 to September 30, 2022



Source: NCHA (20-22), IBM Watson Health (96-19) and NC Medical Database Commission (90-94). 1995 not reported.
 Population data from NC Office of State Planning. No Normal Newborns, NC residents only. Produced by Sheps Center at UNC.

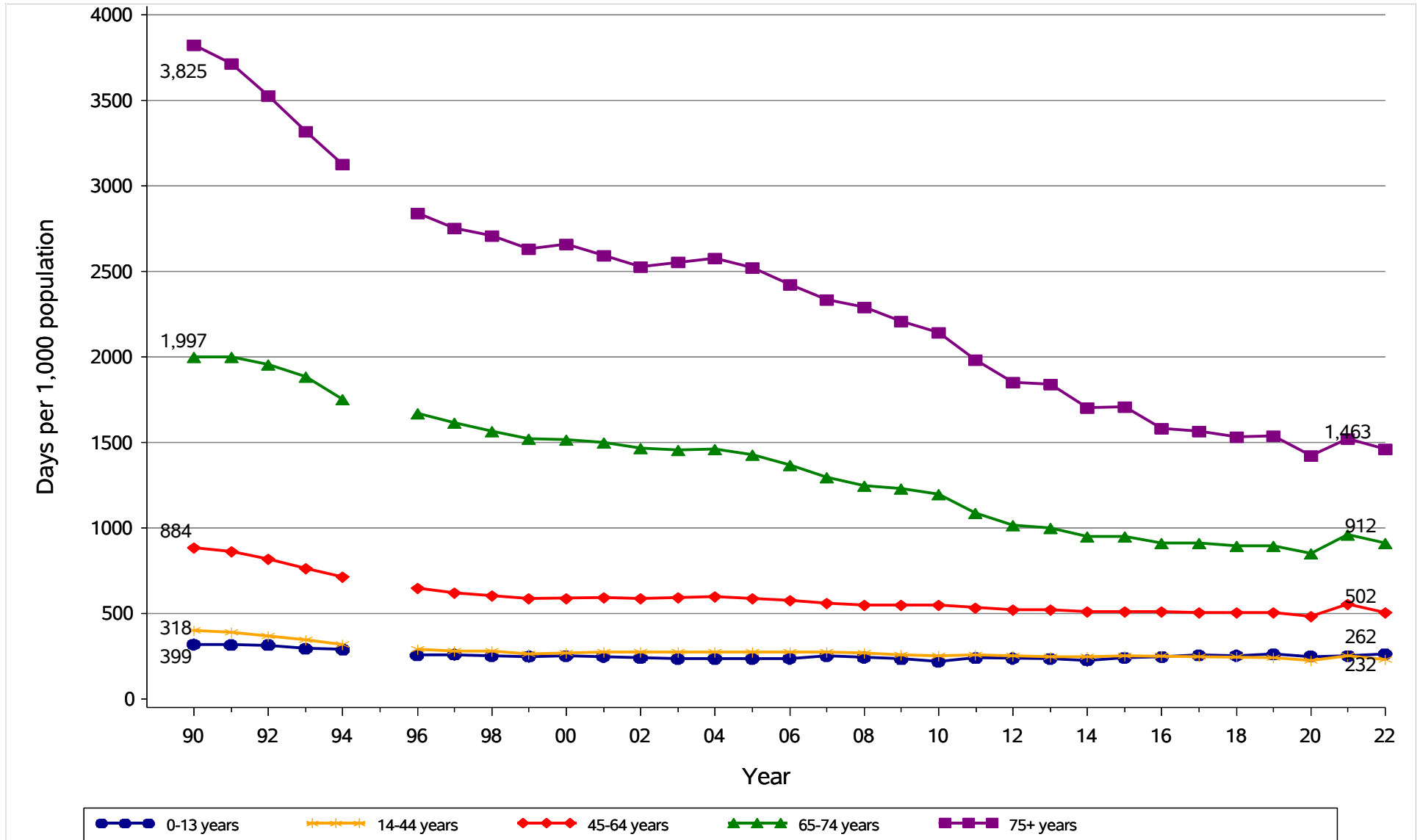
NC Acute Care Hospital Discharges per 1,000 Population, 1990-2022



Source: NCHA (20-22), IBM Watson Health (96-19) and NC Medical Database Commission (90-94). 1995 not reported.
Population data from NC Office of State Planning. No Normal Newborns, NC residents only. Produced by Sheps Center at UNC.

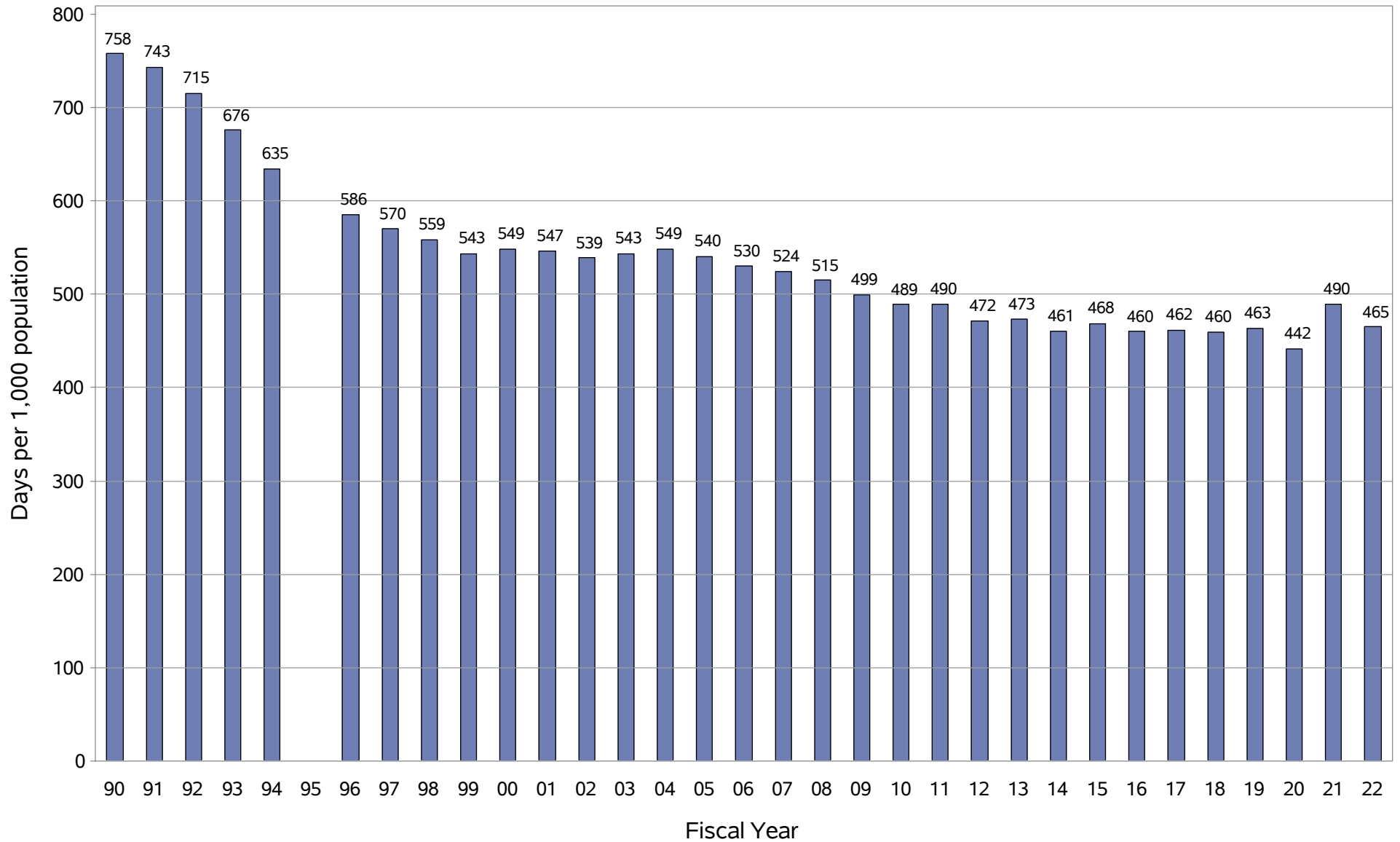
NC Acute Care Hospital Days per 1,000 population

October 1, 1989 to September 30, 2022



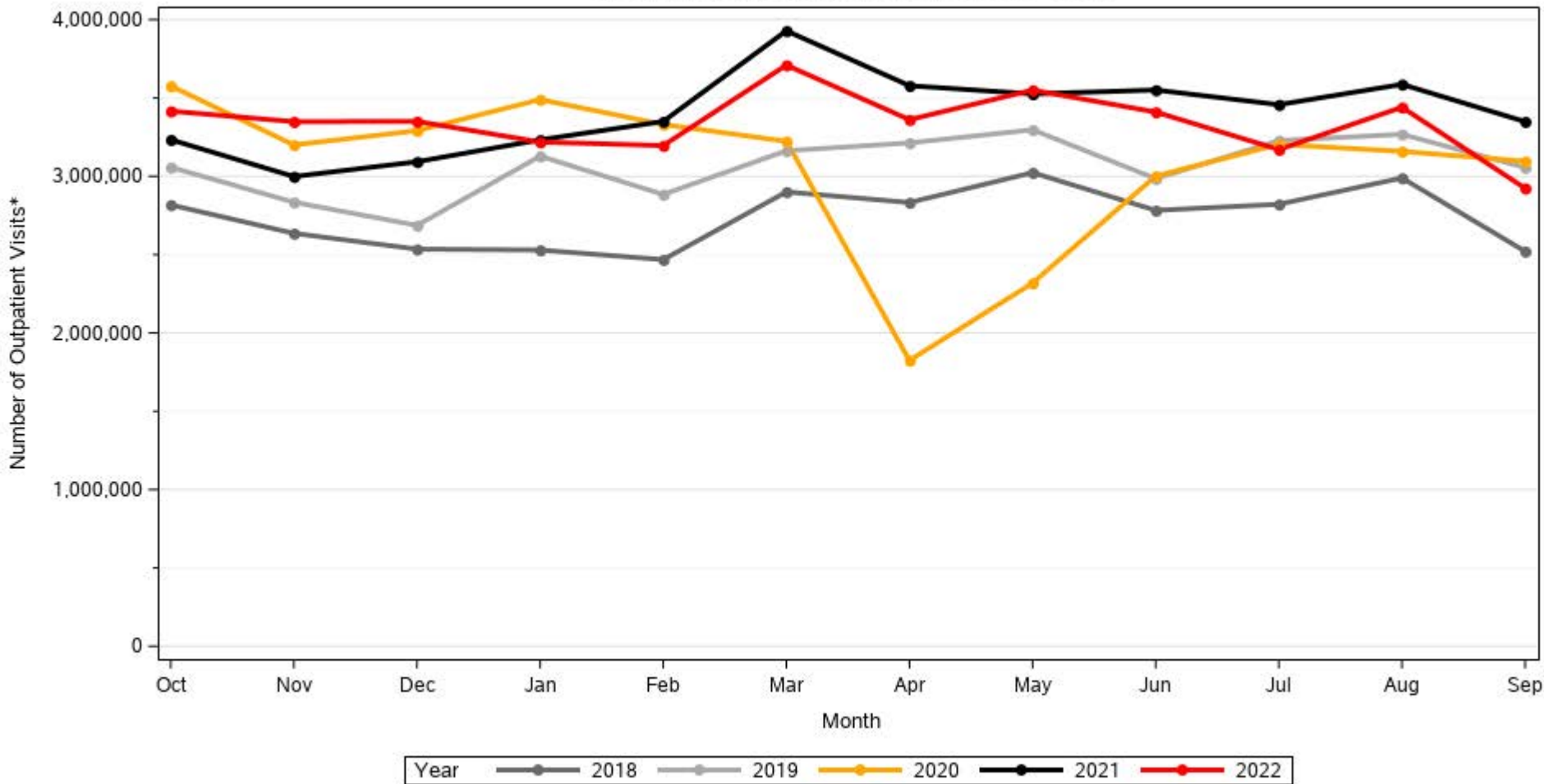
Source: NCHA (20-22), IBM Watson Health (96-19) and NC Medical Database Commission (90-94). 1995 not reported.
Population data from NC Office of State Planning. No Normal Newborns, NC residents only. Produced by Sheps Center at UNC.

NC Acute Care Hospital Days per 1,000 Population, 1990-2022



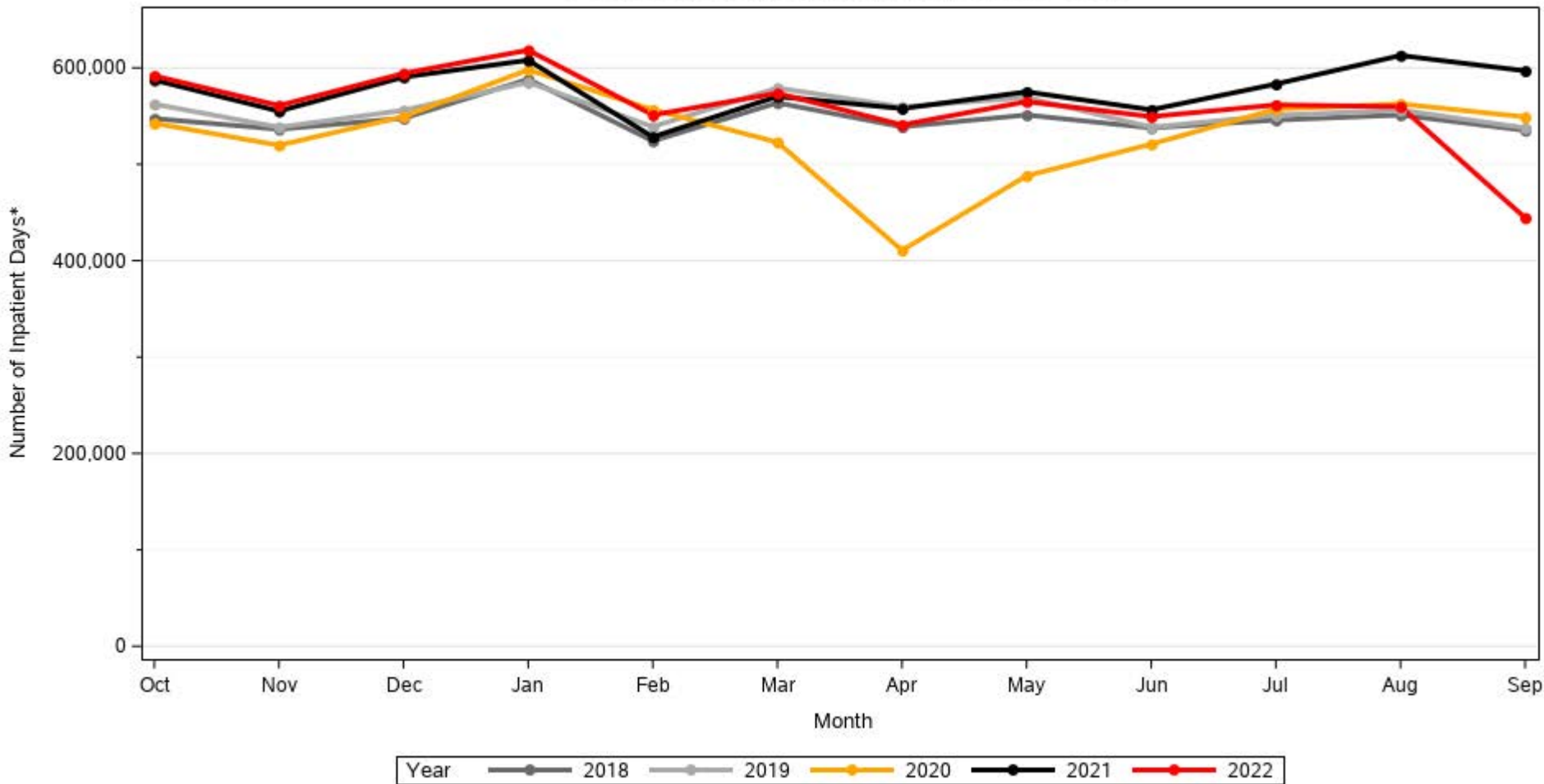
Source: NCHA (20-22), IBM Watson Health (96-19) and NC Medical Database Commission (90-94). 1995 not reported.
Population data from NC Office of State Planning. No Normal Newborns, NC residents only. Produced by Sheps Center at UNC.

OP Visits* for All Facilities for FY 2018 - 2022



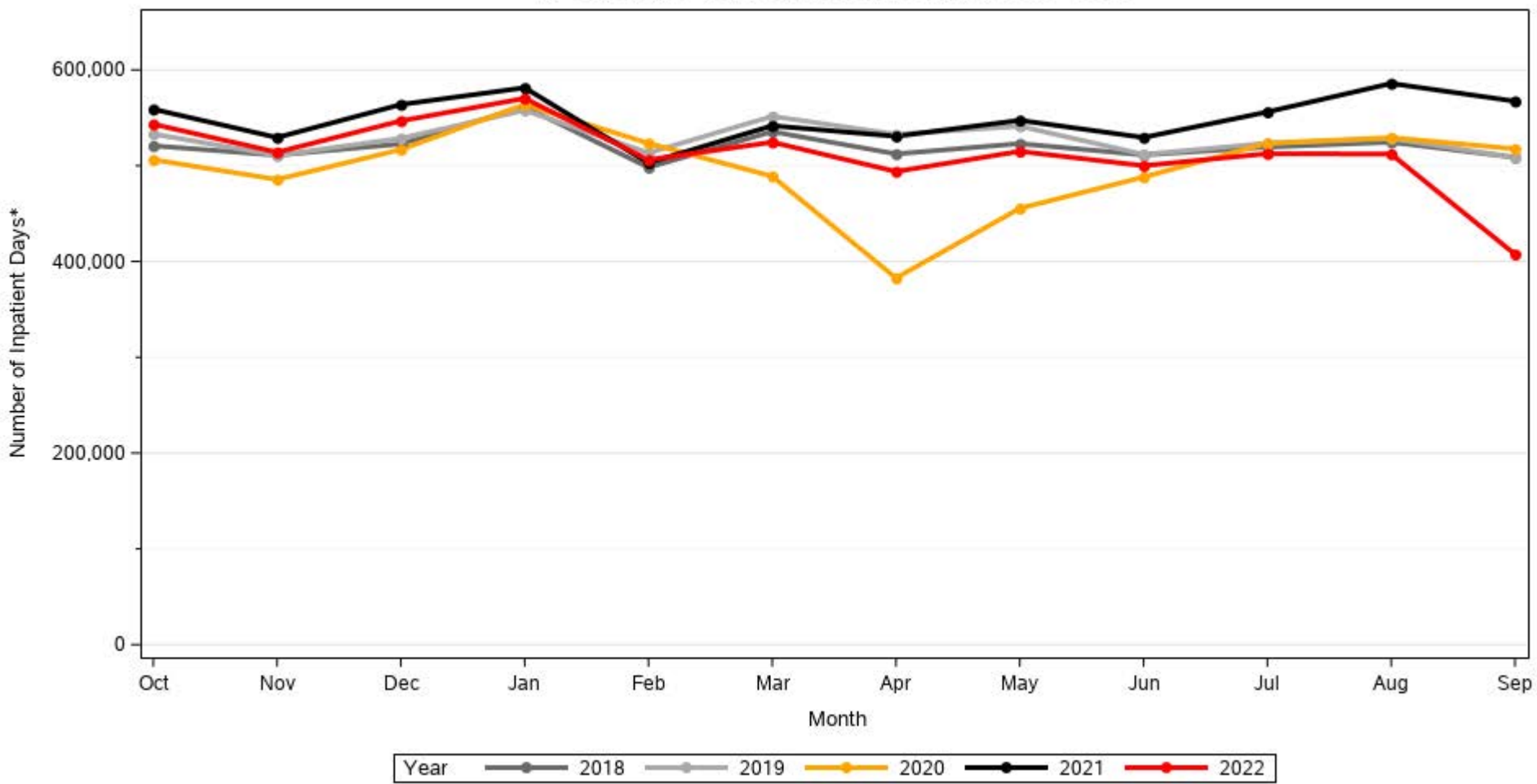
*Visits are defined as each day from the admit date to discharge date for an outpatient encounter.

IP Care Days* for All Facilities for FY 2018 - 2022



*Days are defined as each day from the admit date to discharge date for an inpatient encounter.

IP Care Days* for Acute Facilities for FY 2018 - 2022



*Days are defined as each day from the admit date to discharge date for an inpatient encounter.

ED Visits for All Facilities for FY 2018 - 2022

