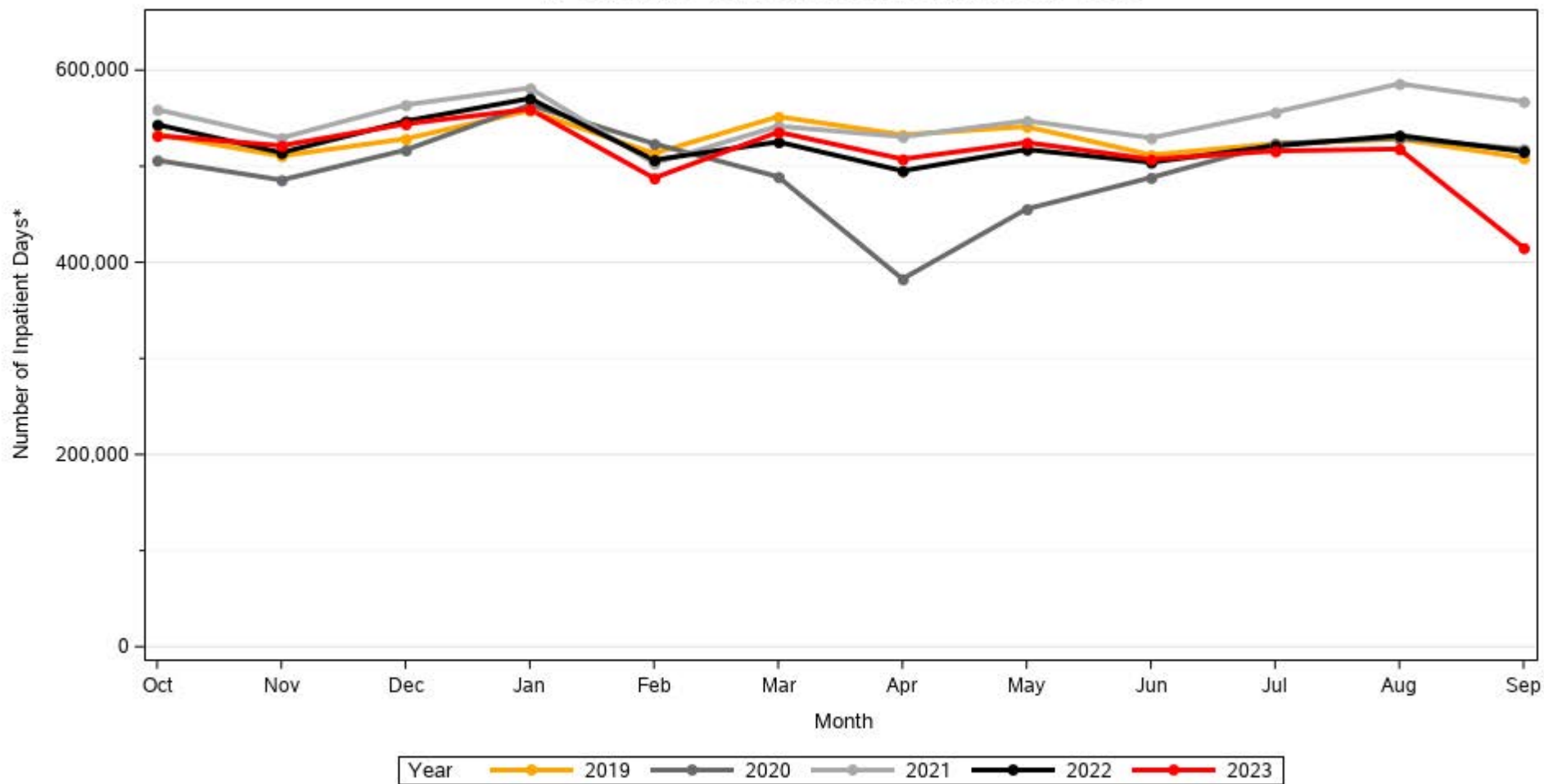
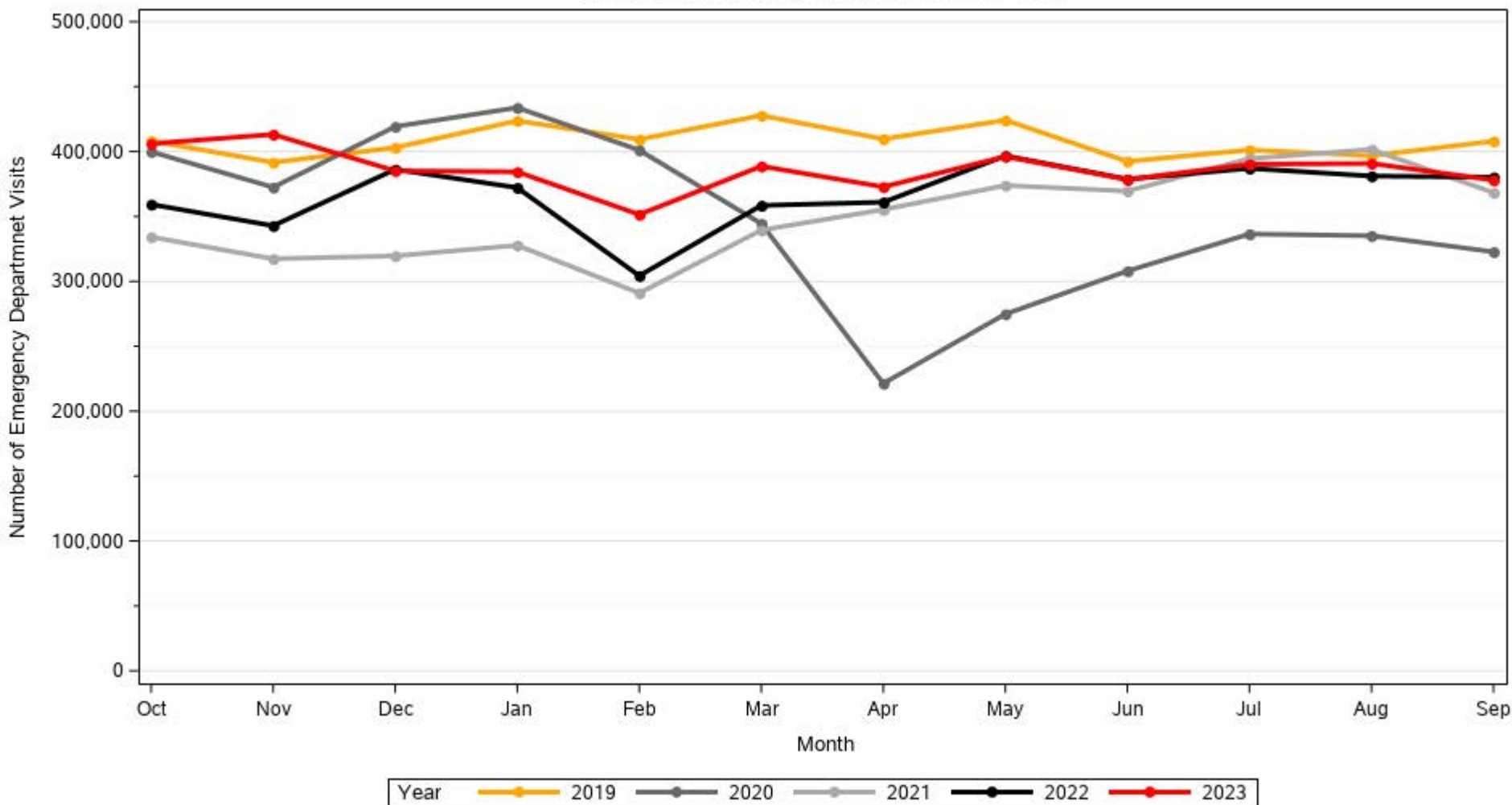


IP Care Days* for Acute Facilities for FY 2019 - 2023

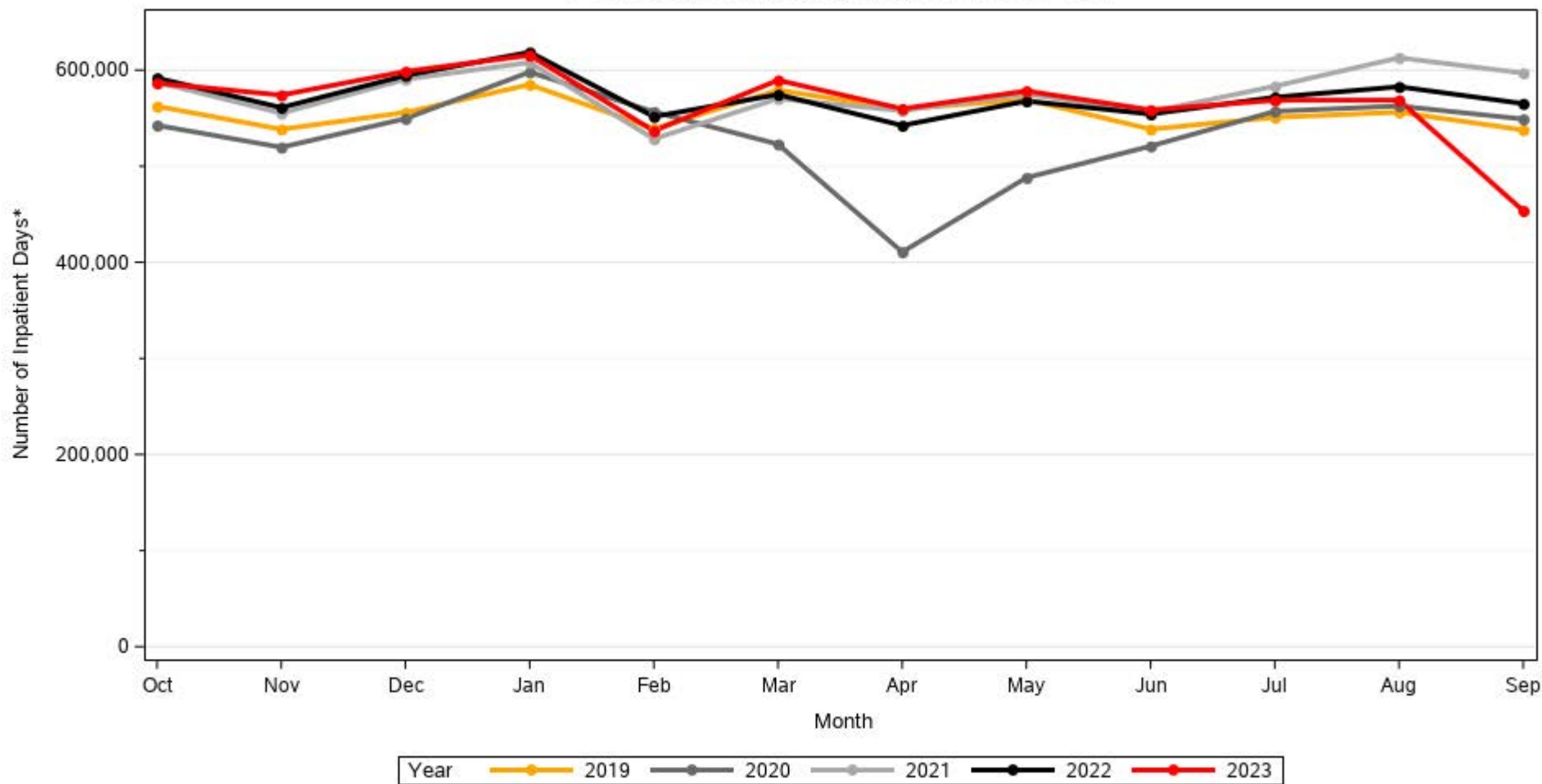


*Days are defined as each day from the admit date to discharge date for an inpatient encounter.

ED Visits for All Facilities for FY 2019 - 2023

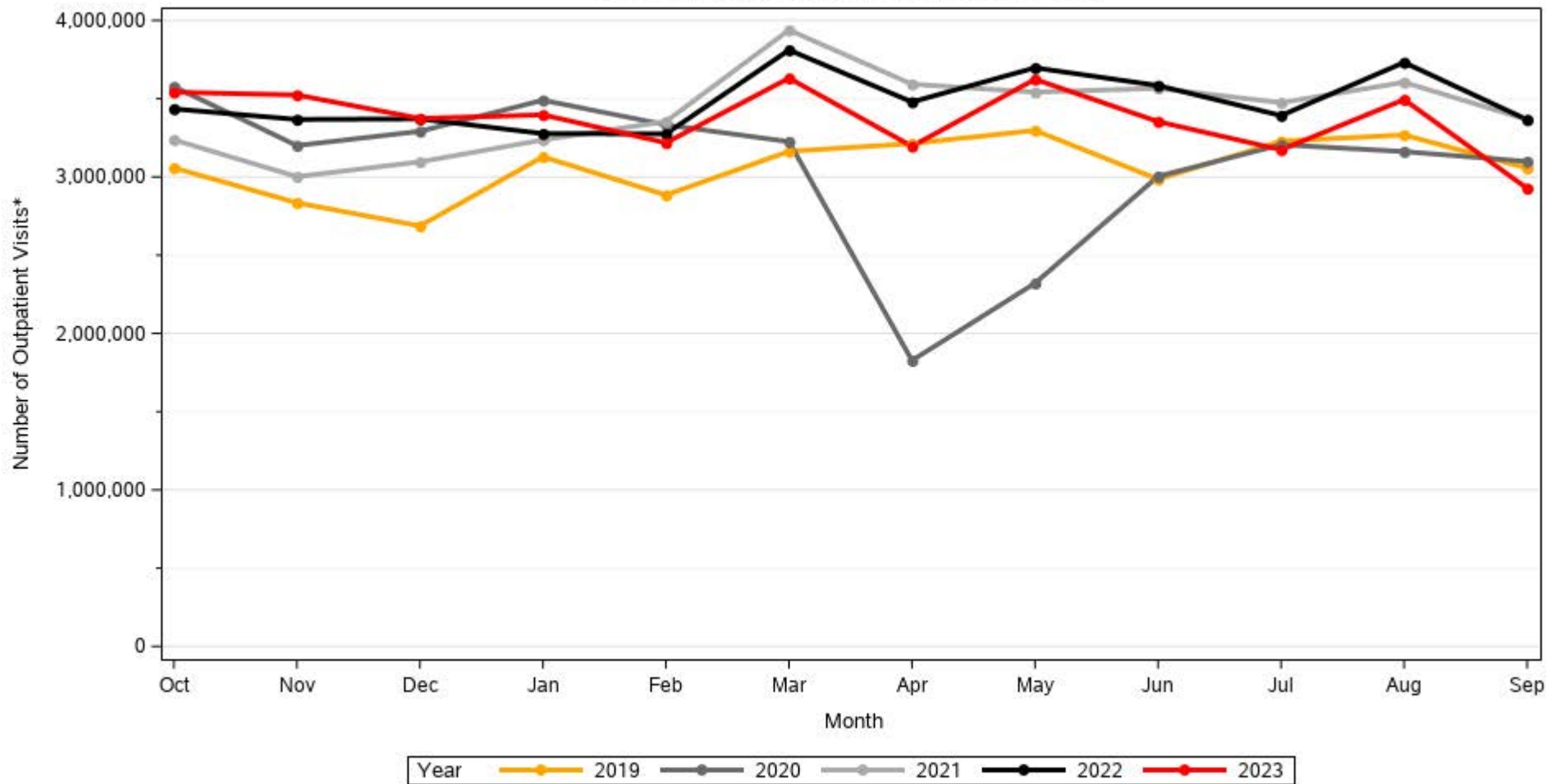


IP Care Days* for All Facilities for FY 2019 - 2023



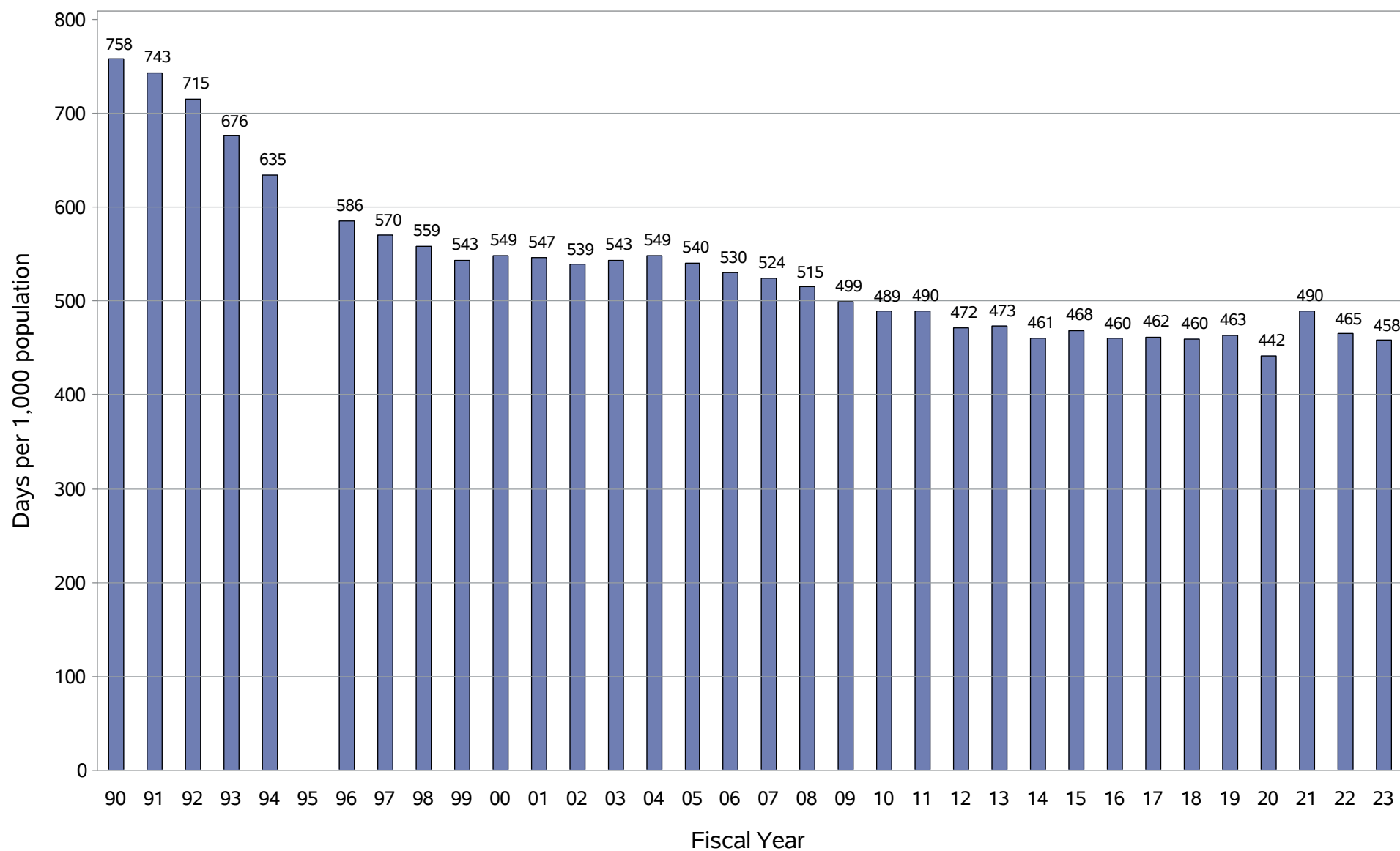
*Days are defined as each day from the admit date to discharge date for an inpatient encounter.

OP Visits* for All Facilities for FY 2019 - 2023



*Visits are defined as each day from the admit date to discharge date for an outpatient encounter.

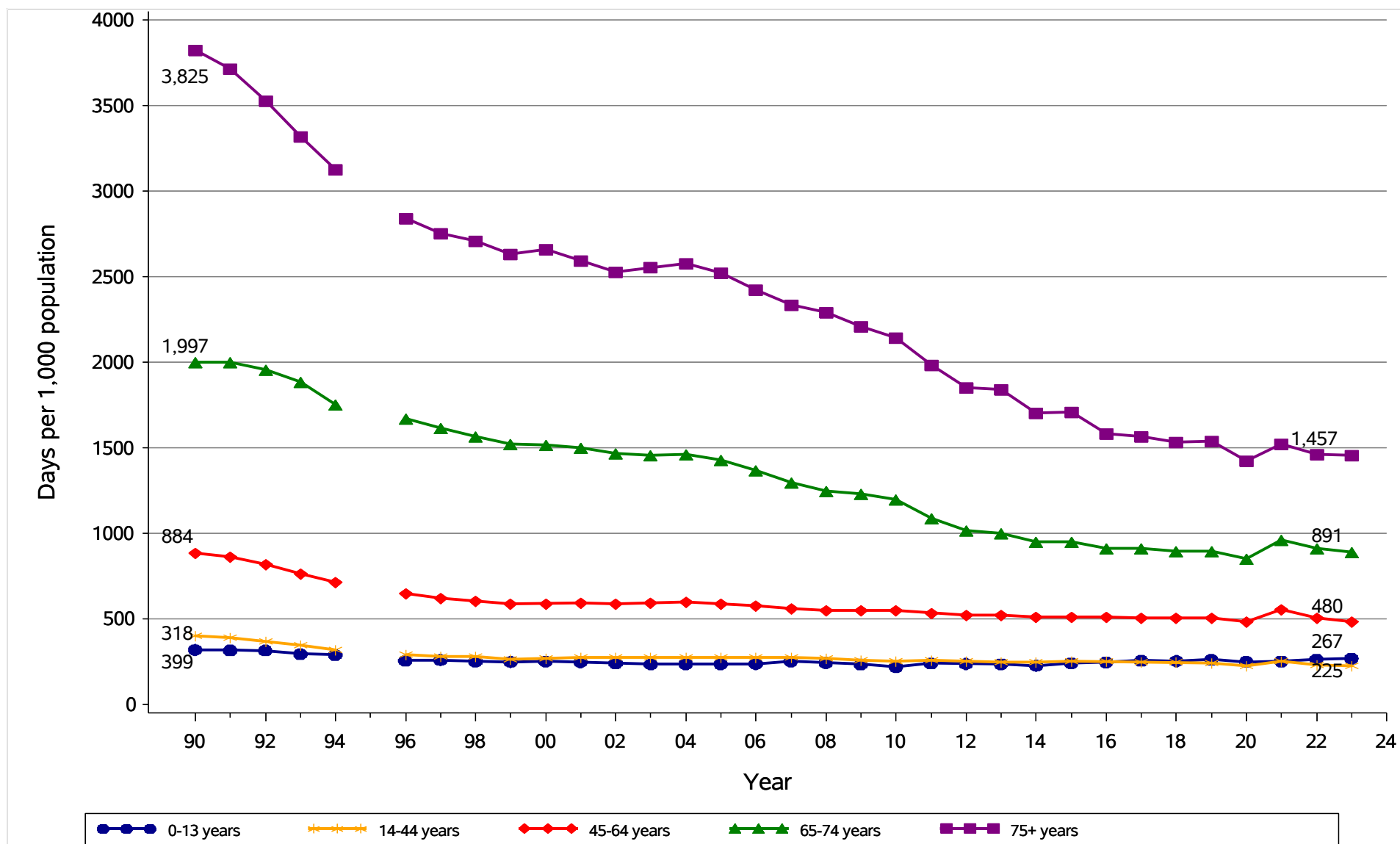
NC Acute Care Hospital Days per 1,000 Population, 1990-2023



Source: NCHA (20-23), IBM Watson Health (96-19) and NC Medical Database Commission (90-94). 1995 not reported.
Population data from NC Office of State Planning. No Normal Newborns, NC residents only. Produced by Sheps Center at UNC.

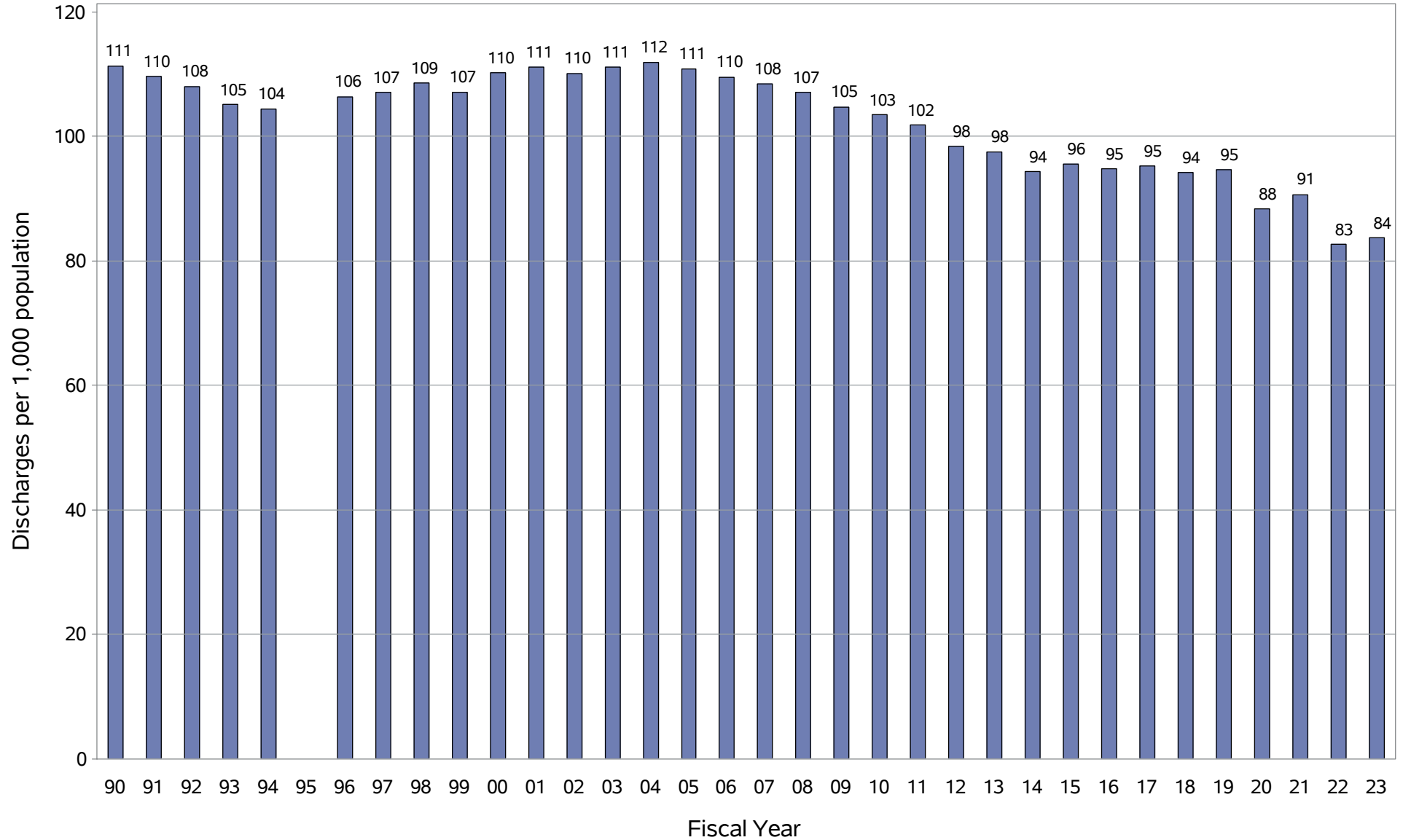
NC Acute Care Hospital Days per 1,000 population

October 1, 1989 to September 30, 2023



Source: NCHA (20-23), IBM Watson Health (96-19) and NC Medical Database Commission (90-94). 1995 not reported.
Population data from NC Office of State Planning. No Normal Newborns, NC residents only. Produced by Sheps Center at UNC.

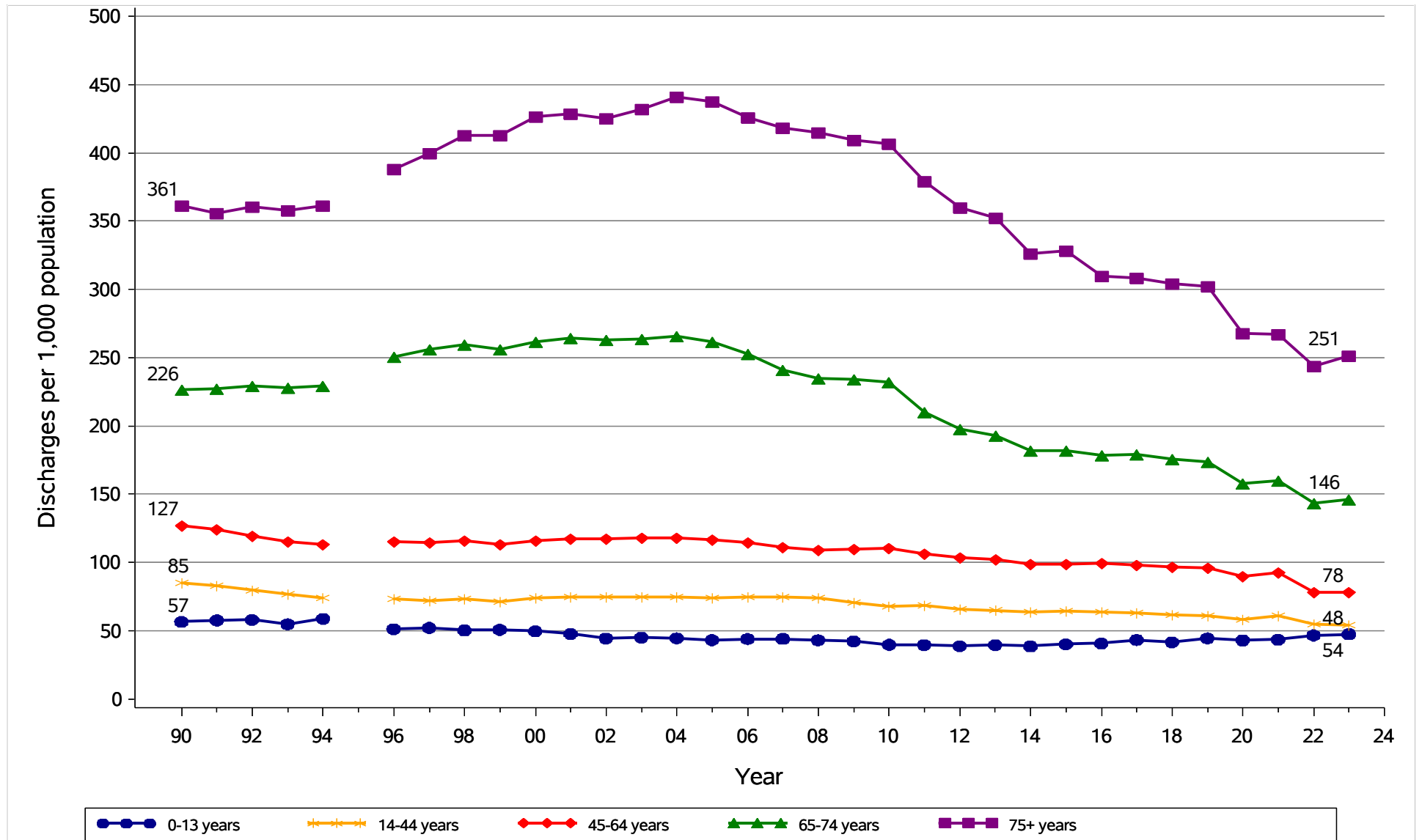
NC Acute Care Hospital Discharges per 1,000 Population, 1990-2023



Source: NCHA (20-23), IBM Watson Health (96-19) and NC Medical Database Commission (90-94). 1995 not reported.
Population data from NC Office of State Planning. No Normal Newborns, NC residents only. Produced by Sheps Center at UNC.

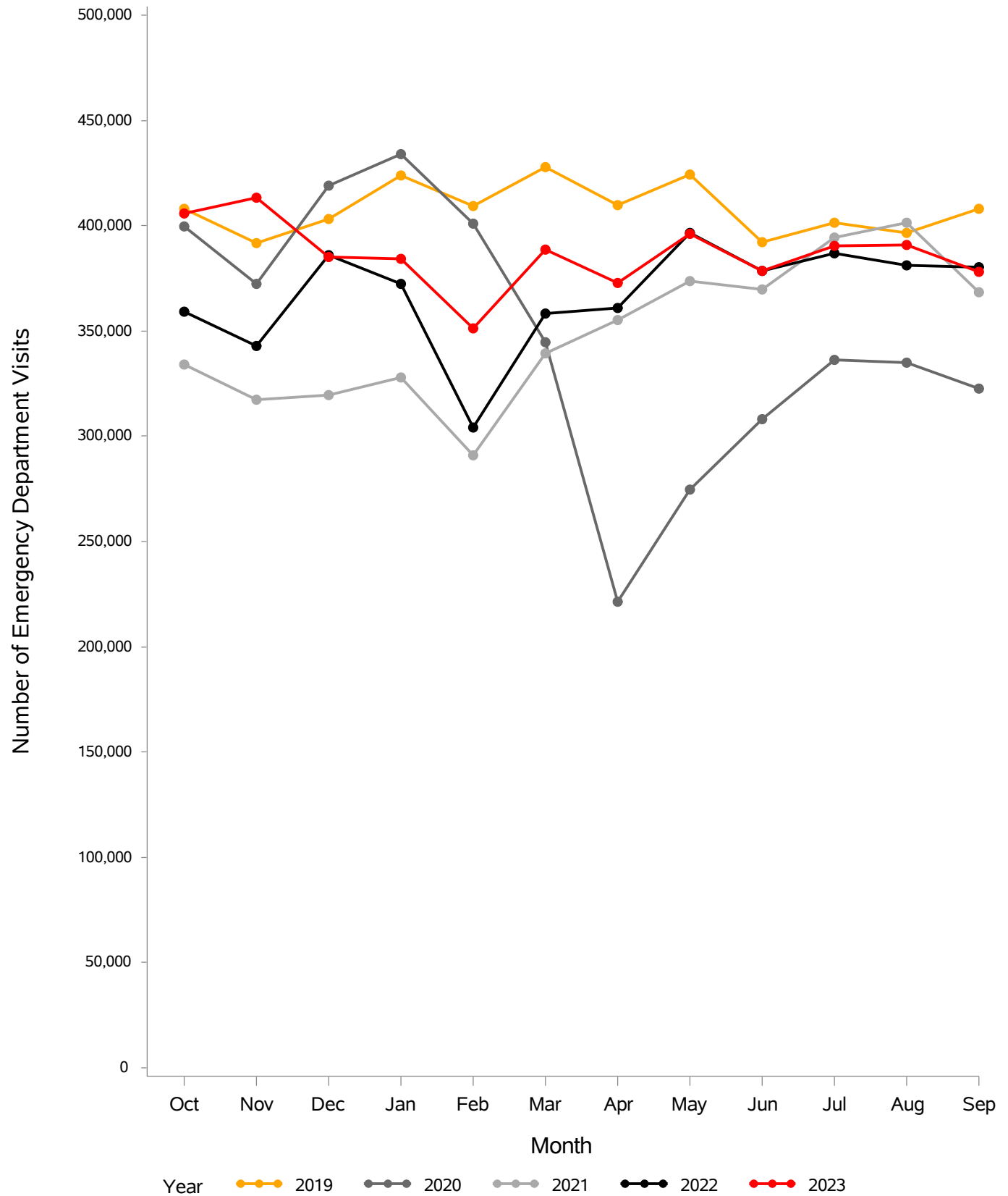
NC Acute Care Hospital Discharges per 1,000 population

October 1, 1989 to September 30, 2023

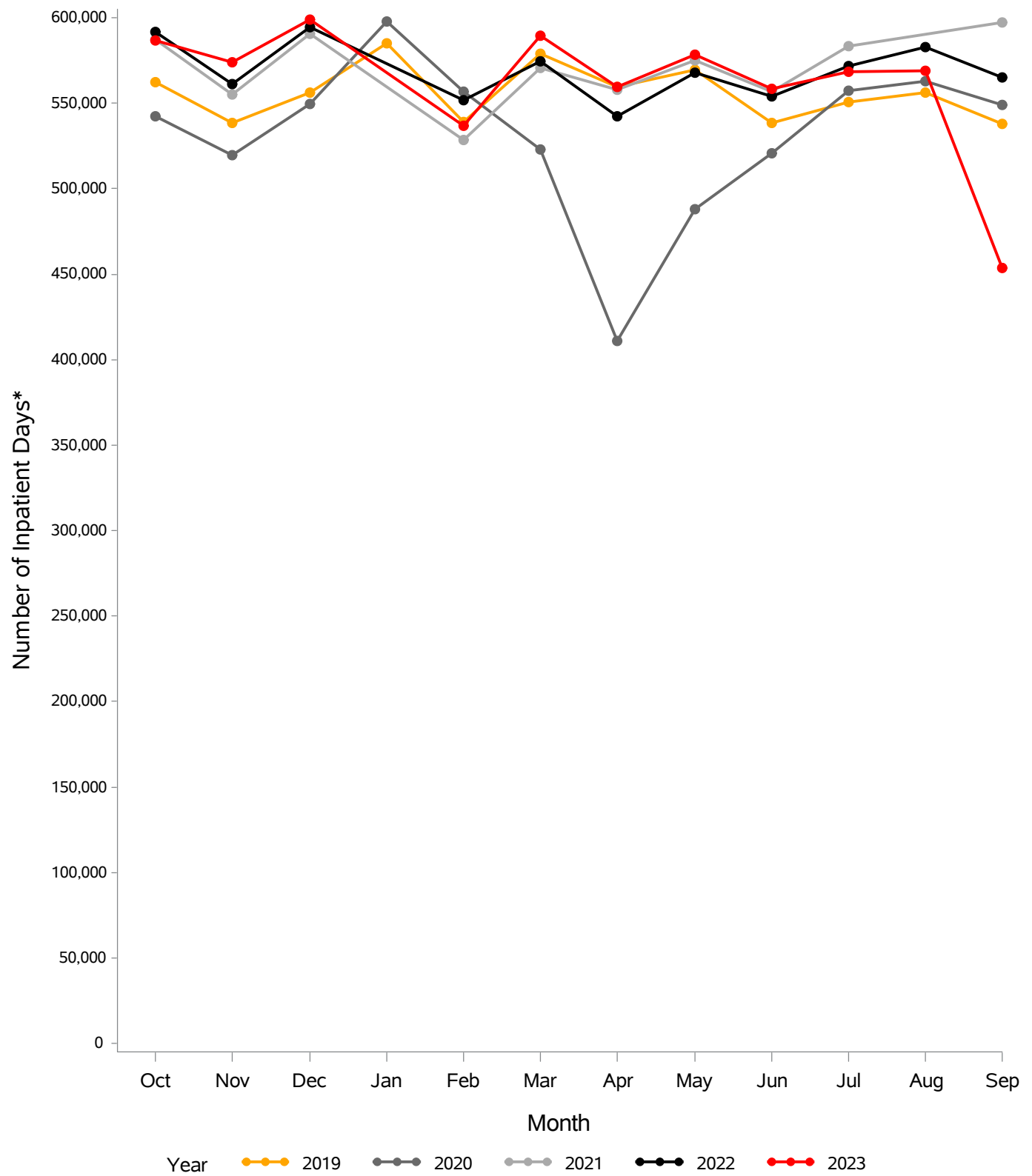


Source: NCHA (20-23), IBM Watson Health (96-19) and NC Medical Database Commission (90-94). 1995 not reported.
Population data from NC Office of State Planning. No Normal Newborns, NC residents only. Produced by Sheps Center at UNC.

ED Visits for All Facilities for FY 2019 - 2023

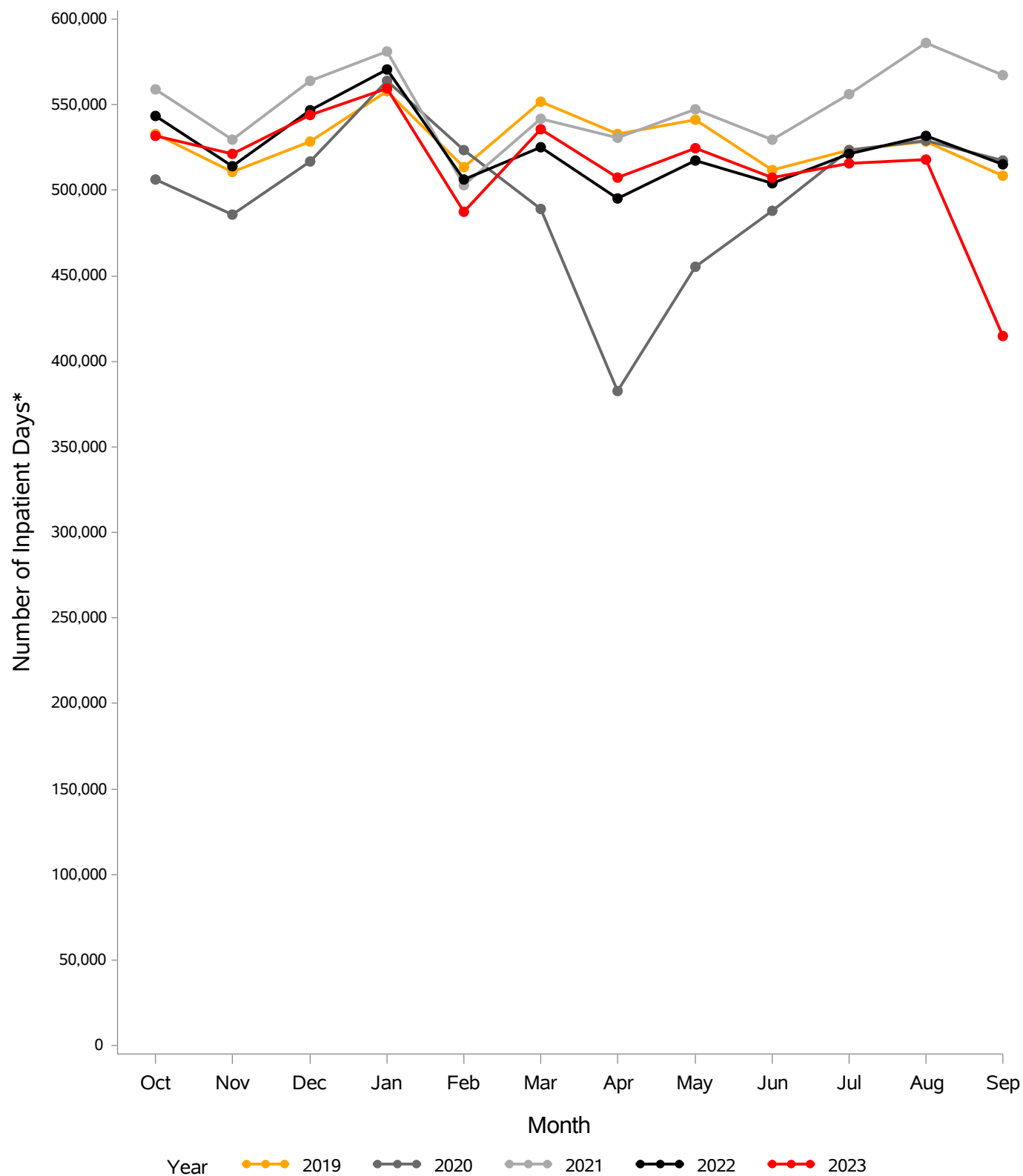


IP Care Days* for All Facilities for FY 2019 - 2023



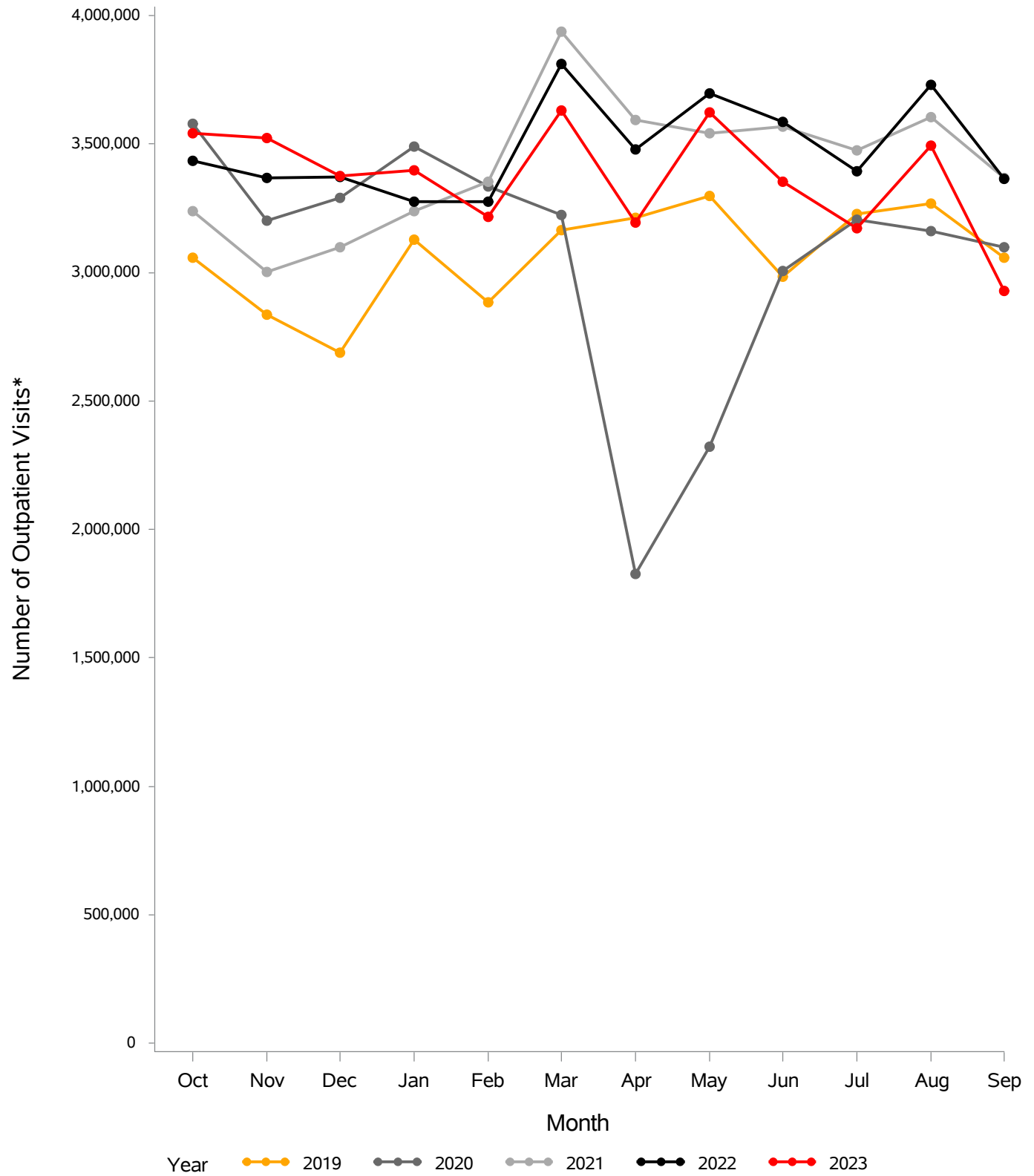
*Days are defined as each day from the admit date to discharge date for an inpatient encounter.

Acute Care Days* for Acute Facilities for FY 2019 - 2023



*Days are defined as each day from the admit date to discharge date for an inpatient encounter.

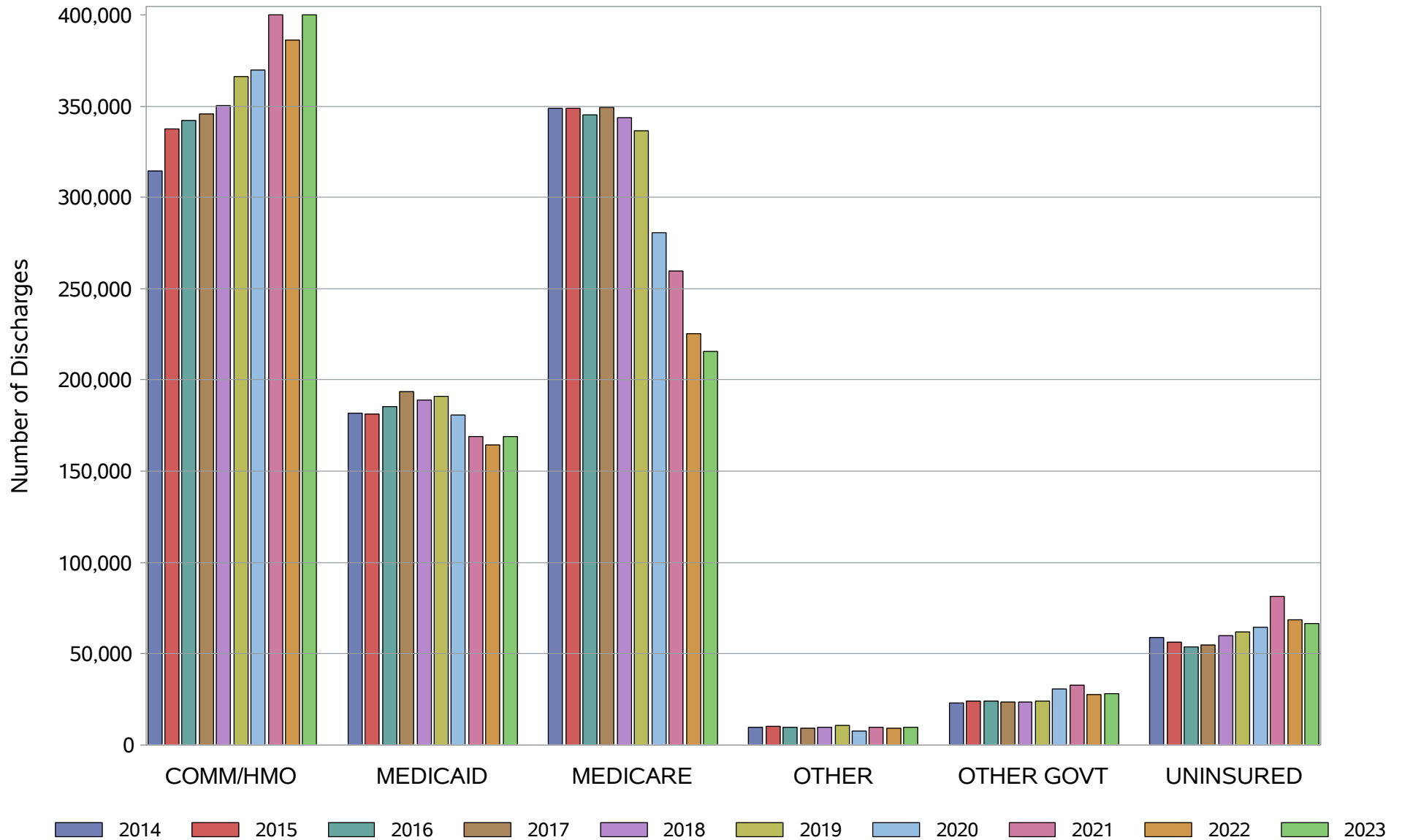
OP Visits* for All Facilities for FY 2019 - 2023



*Visits are defined as each day from the admit date to discharge date for an outpatient encounter.

NC Acute Care Hospital Discharges, Payer Changes

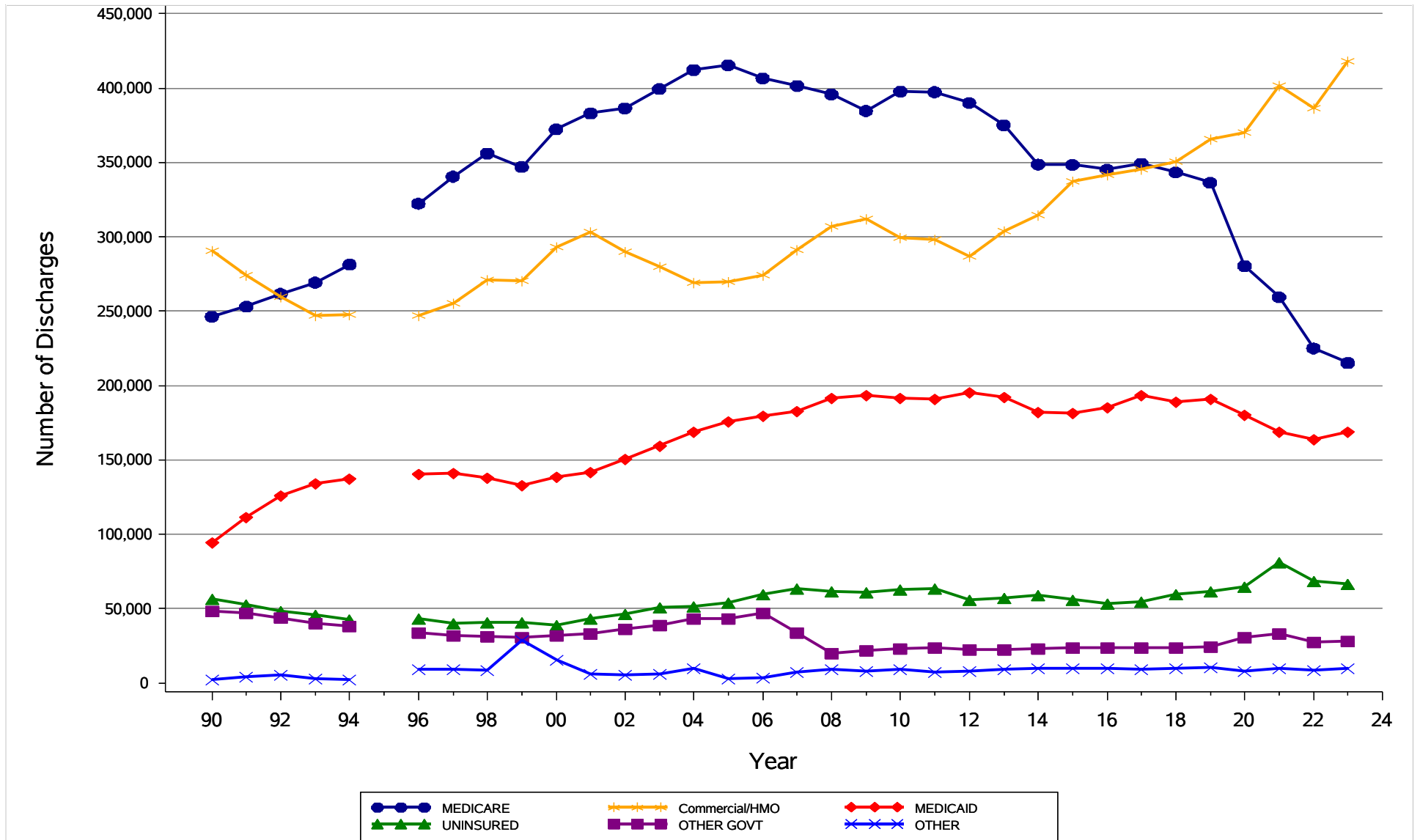
FY2014-FY2023



Source: NCHA (20-23), IBM Watson Health (11-19). No Normal Newborns, NC residents only. Produced by Sheps Center at UNC.

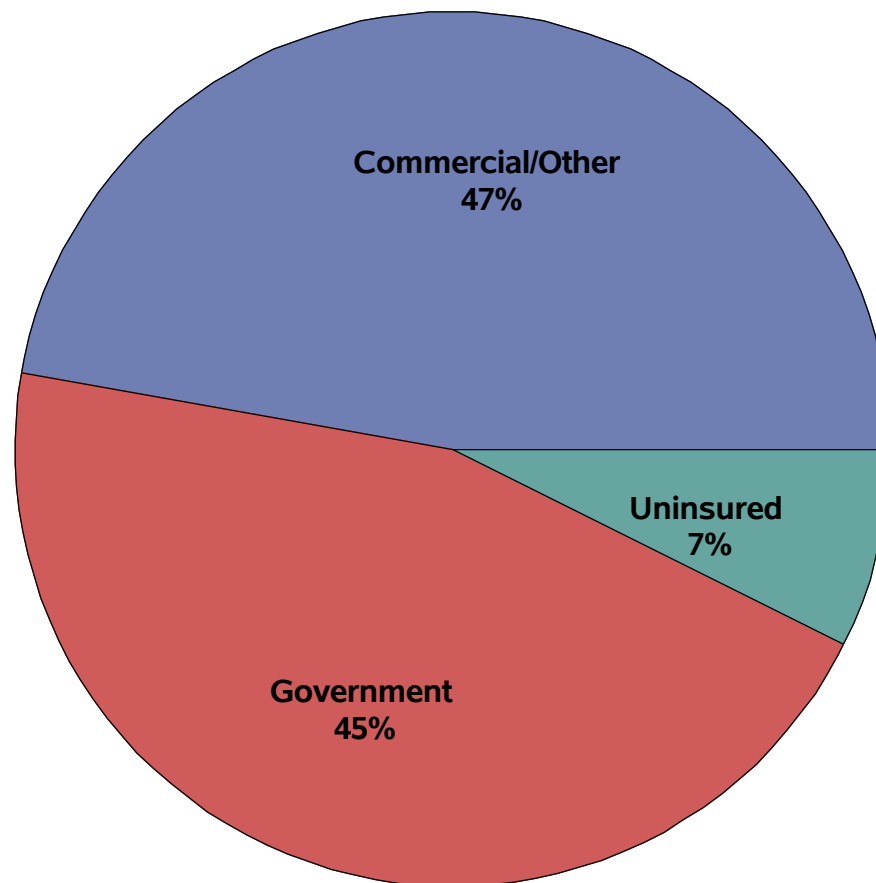
NC Acute Care Hospital Discharges, Payer Distribution

October 1, 1989 to September 30, 2023



Source: NCHA (20-23), IBM Watson Health (96-19) and NC Medical Database Commission (90-94). 1995 not reported.
Population data from NC Office of State Planning. No Normal Newborns, NC residents only. Produced by Sheps Center at UNC.

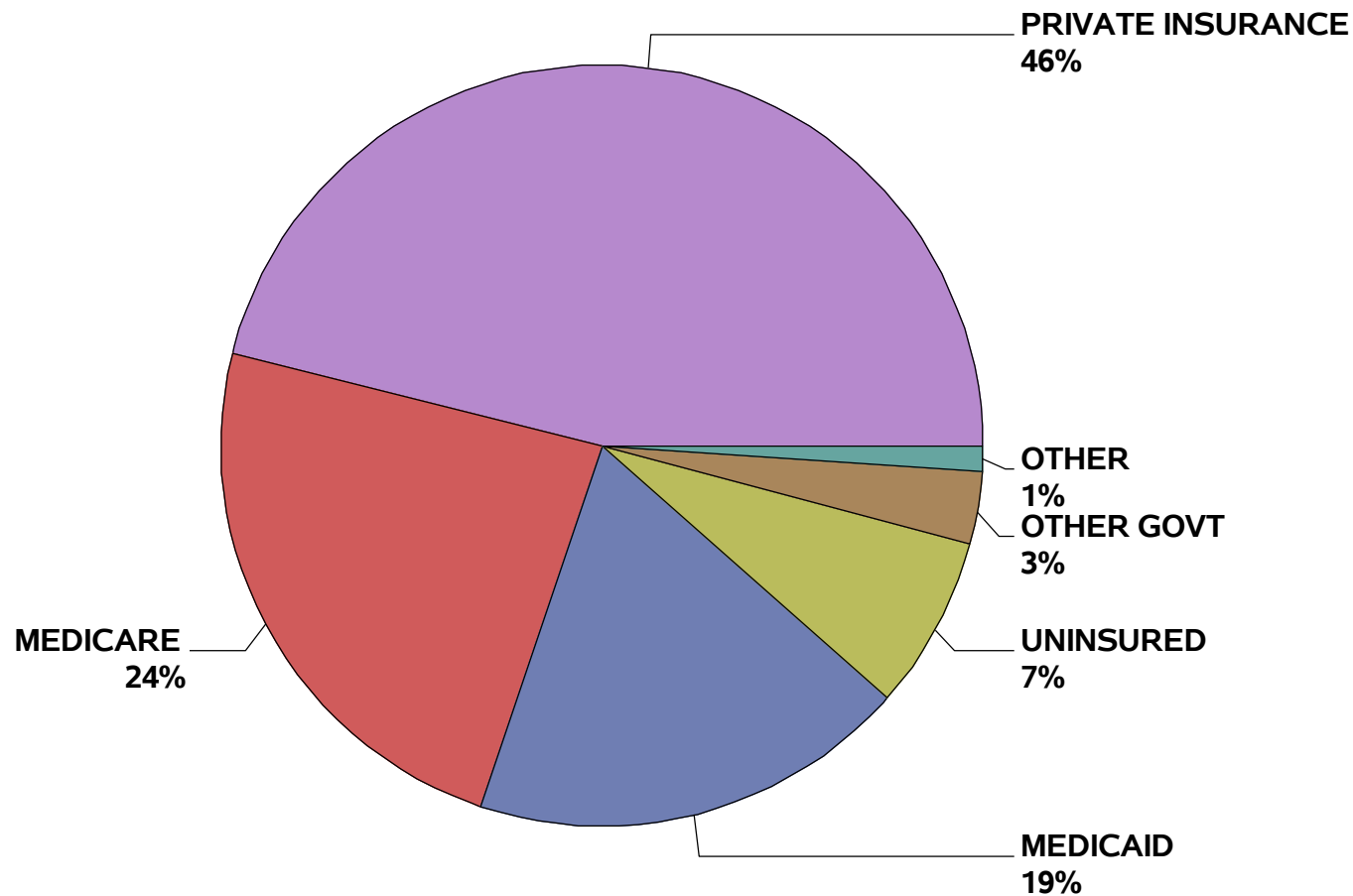
NC Acute Care Hospital Discharges by Payer
October 1, 2022 to September 30, 2023



Source: NCHA. No Normal Newborns, NC residents only.
Produced by Sheps Center at UNC.

NC Acute Care Hospital Discharges by Payer

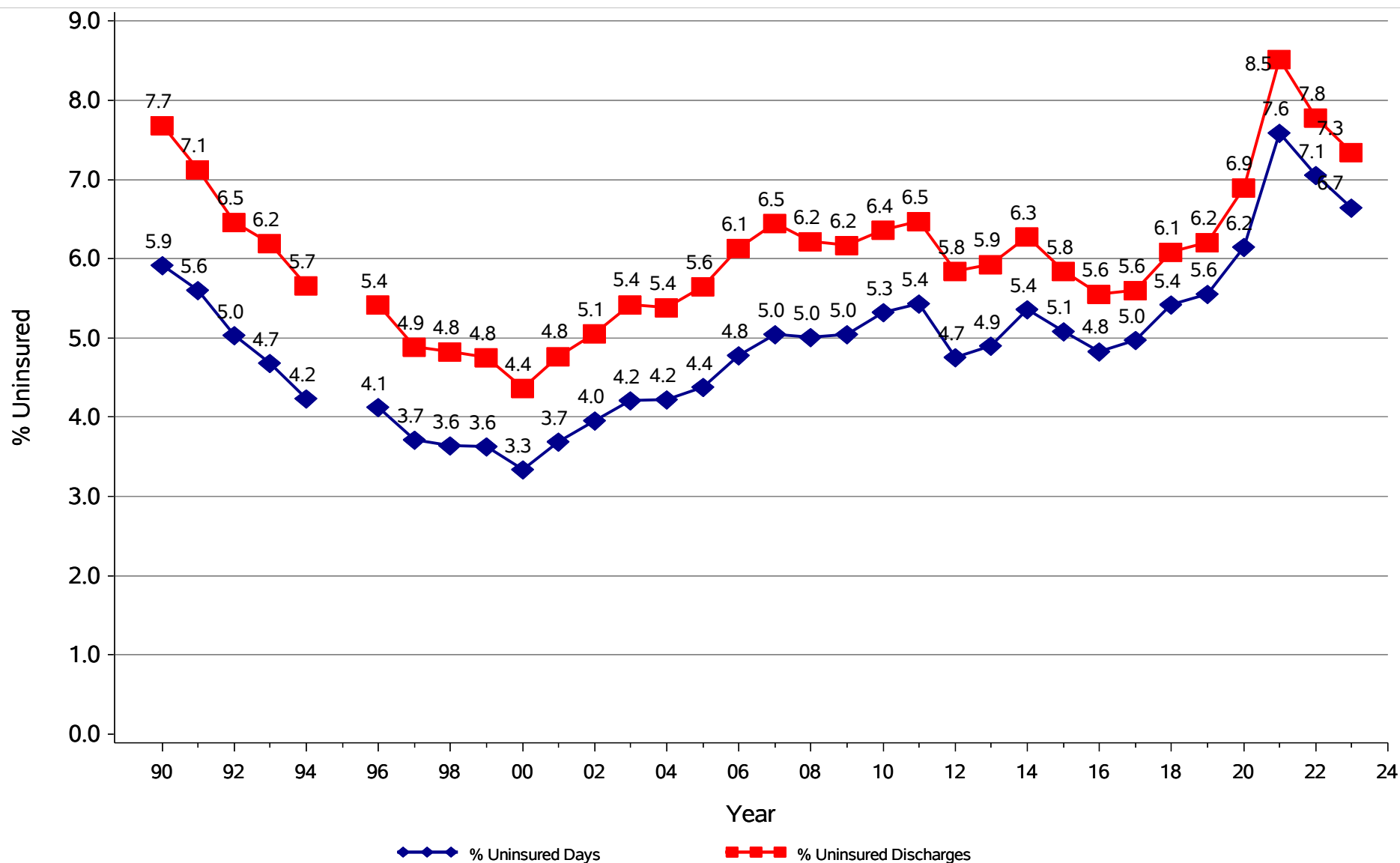
October 1, 2022 to September 30, 2023



Source: NCHA. No Normal Newborns, NC residents only.
Produced by Sheps Center at UNC.

NC Uninsured Discharges and Days as Percent of Total

October 1, 1989 to September 30, 2023



Source: NCHA (20-23), IBM Watson Health (96-19) and NC Medical Database Commission (90-94). 1995 not reported.
Population data from NC Office of State Planning. No Normal Newborns, NC residents only. Produced by Sheps Center at UNC.